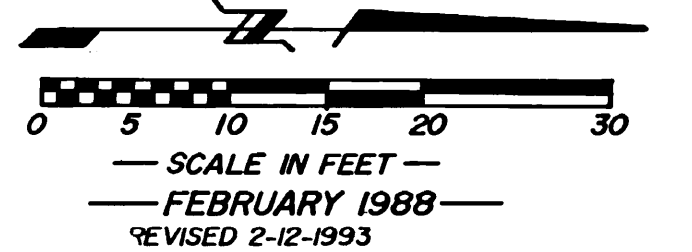


**ST. MICHAEL'S
CATHOLIC CEMETERY**
PINE ISLAND, MINNESOTA



NOTES:
The purpose of this map is to identify the locations of existing graves, establish an index for record keeping, and show the location of new lots which were established and marked out by Mr. Francis Fahy in 1982. The grid and original field measurements by Mr. Fahy were measured from the west and south fence lines.

(9) Indicate aluminum marker numbers embedded in a 4" diameter concrete cylinder. Iron re-rod stakes were driven along side the north edge of each marker in 1987 for ease in finding the numbered markers with a metal locator.

Lots 1 through 84 are 4x11 feet.
Lots 1A, 2A, and 3A are 4x12 feet.
Lots 4A and 5A are 3x12 feet.
Lots 6A, 7A, 8A, and 9A are 4x13 feet.
Lots 10A through 20A are 4x12 feet.
Lots 1B through 9B are 4x13 feet.

We, the Church of St. Michael of Pine Island, Minnesota, have approved this map for the purpose of conducting normal cemetery business this 9th day of February, 2003.

By: *[Signature]*
Its *[Signature]* Pastor
Olmsted County, State of Minnesota
Signed to before me this 9th day of February, 2003, by *[Signature]* its Pastor and *[Signature]* its Treasurer and *[Signature]* its Secretary
Notary Public, Olmsted County

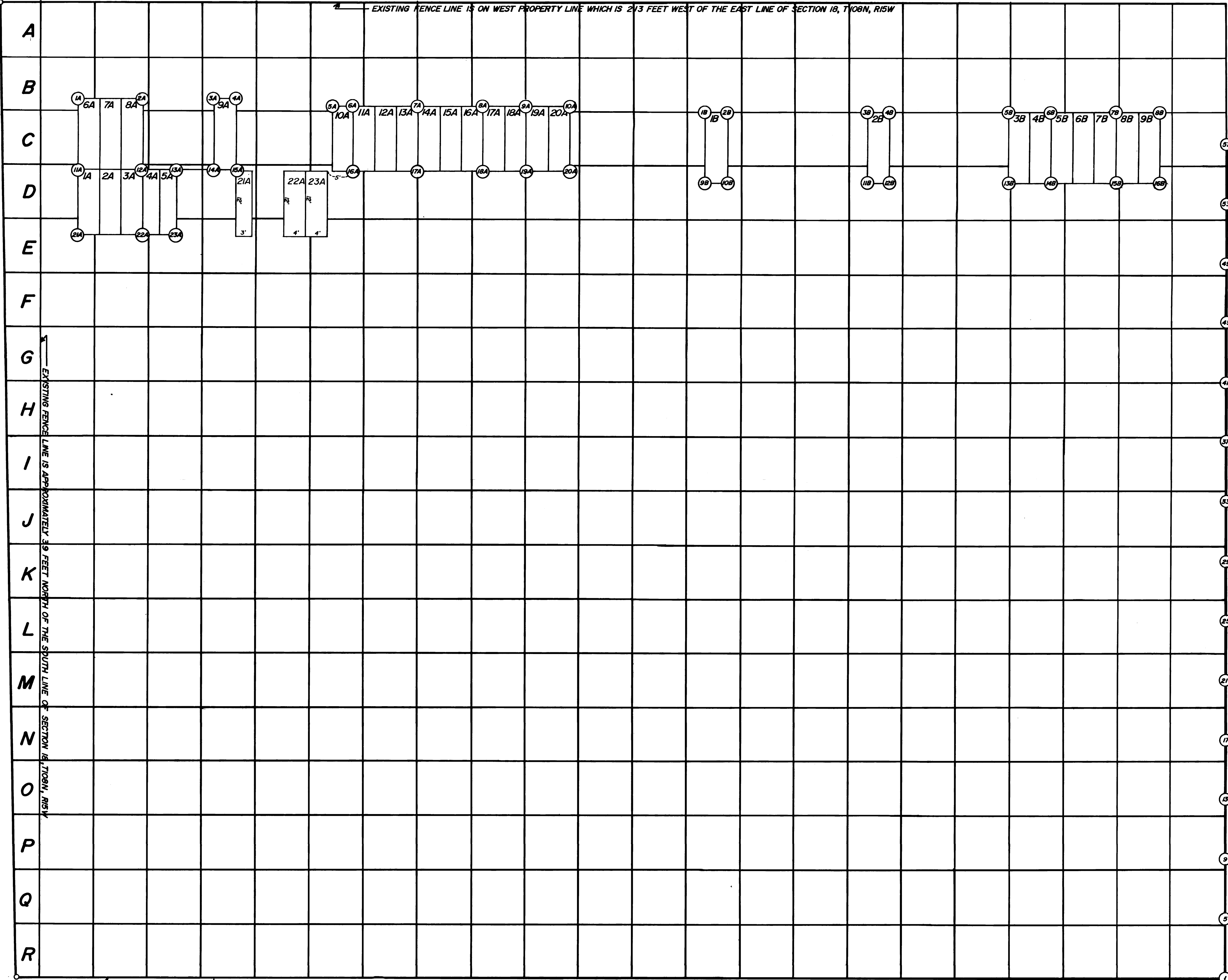


A-956693
Office of County Recorder
Olmsted County, Minnesota
I hereby certify that this document was filed in this office on **2-25th 03** at **11:00 AM** and was duly recorded as document number

[Signature]
Daniel J. Hall - County Recorder,
by *[Signature]* Deputy

1 2 3 4 5 6 7 8 9 10 11 12 13 14 15 16 17 18 19 20 21 22

EXISTING FENCE LINE IS ON WEST PROPERTY LINE WHICH IS 2/3 FEET WEST OF THE EAST LINE OF SECTION 18, T108N, R15W



THIS GRID LINE IS 33' WEST OF THE EAST LINE OF SECTION 18, T108N, R15W

OLMSTED COUNTY ROAD NO. 113

NEW HAVEN TOWNSHIP ROAD

Legal Description:
The South 102.00 feet of the East 213.00 feet of the Southeast Quarter of the Southeast Quarter of Section 18, Township 108 North, Range 15 West, Olmsted County, Minnesota.