

# INNSBRUCK SIX

ROCHESTER, MINNESOTA

I hereby certify that I have surveyed and platted the property described on this plat as INNSBRUCK SIX: that this is a correct representation of the survey; that all distances are correctly shown on the plat; that all monuments have been correctly placed in the ground as shown; that the outside boundary lines are correctly designated on the plat; and that there are no wet lands or public highways to be designated on said plat other than as shown thereon.

*James E. Swanson*  
James E. Swanson, R.L.S.  
Minnesota Registration Number 11622

State of Minnesota  
County of Olmsted

The surveyor's certificate was subscribed and sworn to before me, a Notary Public, this 12<sup>th</sup> day of August, 1980.

*Howard E. Hunt*  
Notary Public Olmsted County

My commission expires Dec. 9, 1985

No delinquent taxes due and transfer entered this 25<sup>th</sup> day of August, 1980.

*Robert W. Brand*  
County Auditor  
*Melva Nelson, Deputy*  
County Surveyor

I certify that this plat has been checked mathematically and that the plat conforms to the applicable platting laws, this 13<sup>th</sup> day of August, 1980.

*Robert W. Brand*  
Olmsted County Surveyor

State of Minnesota  
County of Olmsted  
City of Rochester

I, Carole A. Grimm, City Clerk in and for the City of Rochester, do hereby certify that on the 18 day of August, 1980, the accompanying plat was duly approved by the Common Council of the City of Rochester. In testimony thereof I have hereunto signed my name and affixed the seal of said City of Rochester this 19 day of August, 1980.

*Carole A. Grimm*  
City Clerk

427664

COUNTY RECORDER

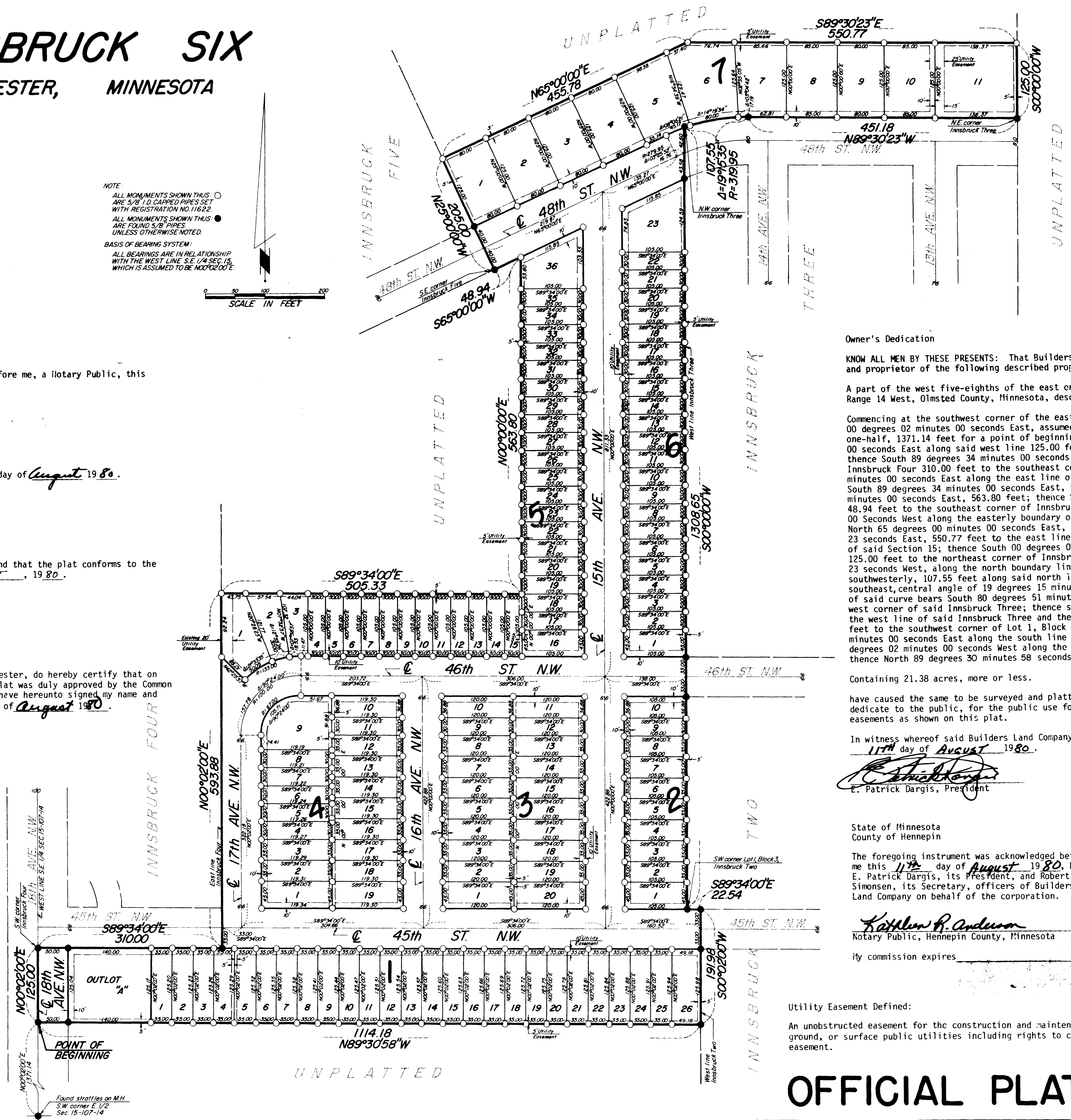
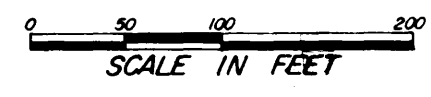
DOCUMENT NUMBER

I hereby certify that this instrument was filed in the Office of the County Recorder for record on this 25 day of August, 1980, at 5 o'clock P.M., and was duly recorded in the Olmsted County records.

*Sara J. Jostlund*  
County Recorder

Deputy

NOTE  
ALL MONUMENTS SHOWN THIS ○ ARE 5/8" I.D. CAPPED PIPES SET WITH REGISTRATION NO. 11622.  
ALL MONUMENTS SHOWN THIS ● ARE FOUND 5/8" PIPES, UNLESS OTHERWISE NOTED.  
BASIS OF BEARING SYSTEM:  
ALL BEARINGS ARE IN RELATIONSHIP WITH THE WEST LINE S.E. 1/4 SEC. 15, WHICH IS ASSUMED TO BE N00°02'00"E.



### Owner's Dedication

KNOW ALL MEN BY THESE PRESENTS: That Builders Land Company, a Minnesota Corporation owner and proprietor of the following described property situated in the City of Rochester to wit:

A part of the west five-eighths of the east one-half of Section 15, Township 107 North, Range 14 West, Olmsted County, Minnesota, described as follows:

Commencing at the southwest corner of the east one-half of said Section 15; thence North 00 degrees 02 minutes 00 seconds East, assumed bearing, along the west line of said east one-half, 1371.14 feet for a point of beginning; thence continue North 00 degrees 02 minutes 00 seconds East along said west line 125.00 feet to the southwest corner of Innsbruck Four; thence South 89 degrees 34 minutes 00 seconds East along the south line of said Innsbruck Four 310.00 feet to the southeast corner thereof; thence North 00 degrees 02 minutes 00 seconds East along the east line of said Innsbruck Four 593.88 feet; thence South 89 degrees 34 minutes 00 seconds East, 505.33 feet; thence North 00 degrees 02 minutes 00 seconds East, 563.80 feet; thence South 65 degrees 00 minutes 00 seconds West, 48.94 feet to the southeast corner of Innsbruck Five, 205.00 feet; thence North 00 degrees 02 minutes 00 seconds West along the easterly boundary of said Innsbruck Five, 205.00 feet; thence North 65 degrees 00 minutes 00 seconds East, 455.78 feet; thence South 89 degrees 30 minutes 23 seconds East, 550.77 feet to the east line of the west five-eighths of the east one-half of said Section 15; thence South 00 degrees 00 minutes 00 seconds East, along said east line, 125.00 feet to the northeast corner of Innsbruck Three; thence North 89 degrees 30 minutes 23 seconds West, along the north boundary line of said Innsbruck Three, 451.18 feet; thence southwesterly, 107.55 feet along said north line, along a tangential curve, concave to the southeast, central angle of 19 degrees 15 minutes 35 seconds, radius of 319.95 feet and chord of said curve bears South 80 degrees 51 minutes 49 seconds West, 107.04 feet to the northwest corner of said Innsbruck Three; thence south 00 degrees 00 minutes 00 seconds West along the west line of said Innsbruck Three and the west line of Innsbruck Two a distance of 1308.65 feet to the southwest corner of Lot 1, Block 3, Innsbruck Two; thence South 89 degrees 34 minutes 00 seconds East along the south line of said Lot 1, 22.54 feet; thence South 00 degrees 02 minutes 00 seconds West along the west line of said Innsbruck Two, 191.98 feet; thence North 89 degrees 30 minutes 58 seconds West, 1114.18 feet to the point of beginning.

Containing 21.38 acres, more or less.

have caused the same to be surveyed and platted as Innsbruck Six and do hereby donate and dedicate to the public, for the public use forever the streets and avenues and grant the easements as shown on this plat.

In witness whereof said Builders Land Company has caused these presents to be signed this 11<sup>th</sup> day of AUGUST, 1980.

*E. Patrick Dargis*  
E. Patrick Dargis, President

*Robert J. Simonsen*  
Robert J. Simonsen, Secretary

State of Minnesota  
County of Hennepin

The foregoing instrument was acknowledged before me this 11<sup>th</sup> day of August, 1980, by E. Patrick Dargis, its President, and Robert J. Simonsen, its Secretary, officers of Builders Land Company on behalf of the corporation.

*Kathleen R. Anderson*  
Notary Public, Hennepin County, Minnesota

My commission expires \_\_\_\_\_

### Utility Easement Defined:

An unobstructed easement for the construction and maintenance of all necessary overhead, underground, or surface public utilities including rights to conduct drainage and trimming on said easement.

# OFFICIAL PLAT

PREPARED BY:  
McGHEE & BETTS, INC.  
CONSULTING ENGINEERS  
LAND SURVEYORS  
ROCHESTER, MINNESOTA