

# NORTHERN HEIGHTS EAST ELEVENTH SUBDIVISION

STATE OF MINNESOTA  
COUNTY OF OLMTSTED  
CITY OF ROCHESTER

I, Carole A. Grimm, City Clerk, in and for the City of Rochester, do hereby certify that on the 18 day of Sept., 1995, the accompanying plat was duly approved by the Common Council of the City of Rochester. In testimony whereof, I have hereunto signed my name and affixed the Seal of said City of Rochester this 29 day of Nov., 1995.

*Carole A. Grimm*  
Carole A. Grimm, City Clerk

### SURVEYOR'S CERTIFICATE

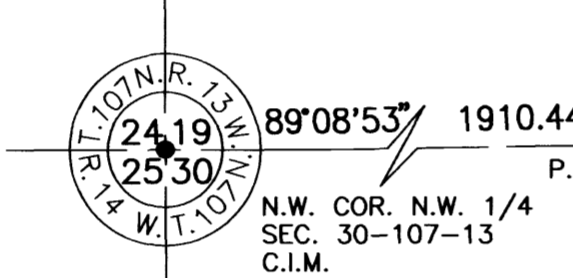
I do hereby certify that I have surveyed and platted the property described on this plat as NORTHERN HEIGHTS EAST ELEVENTH SUBDIVISION, that this plat is a correct representation of said survey, that all distances are correctly shown on said plat in feet and hundredths of a foot, that all monuments have been correctly placed in the ground as shown or will be correctly placed in the ground by August 1, 1996; that the outside boundary lines are correctly designated; and that there are no wetlands as defined in MS 505.02, Subd. 1, or public highways to be designated on said plat other than as shown.

*Michael J. Fritz*  
Michael J. Fritz  
Minnesota R.L.S. No. 20703

STATE OF MINNESOTA  
COUNTY OF OLMTSTED

The foregoing Surveyor's Certificate was acknowledged before me this 20th day of September, 1995, by Michael J. Fritz, R.L.S. No. 20703.

*Harold M. Malice*  
Notary Public, Olmsted County, MN  
My Commission Expires 1/31/2000



### INSTRUMENT OF DEDICATION

KNOW ALL MEN BY THESE PRESENTS: That Payne Company, a Minnesota Corporation, Owners and Proprietors of the following described property, situated in the County of Olmsted, State of Minnesota, to wit:

That part of the Southeast Quarter of the Southwest Quarter of Section 19, and the Northeast Quarter of the Northwest Quarter of Section 30, Township 107 North, Range 13 West, Olmsted County, Minnesota, described as follows:

Commencing at the northwest corner of said Northwest Quarter; thence easterly on a Minnesota State Plane Grid Azimuth from north 89 degrees 08 minutes 53 seconds azimuth 1910.44 feet to the point of beginning; thence southerly 179 degrees 09 minutes 03 seconds azimuth 106.01 feet to the northeast corner of Northern Heights East Tenth Subdivision according to the plat thereof on file in the County Recorder's office, Olmsted County, Minnesota; thence continue southerly 179 degrees 09 minutes 03 seconds azimuth along the east line of said Subdivision 66.00 feet to the southerly line of 26th Street N.E.; thence easterly 89 degrees 09 minutes 03 seconds azimuth 199.37 feet; thence easterly 91 degrees 21 minutes 57 seconds azimuth 320.94 feet to the westerly right of way line of County State Aid Highway No. 22 as defined by Olmsted Highway Right of Way Plat No. 44; thence northerly 518.39 feet along said westerly right of way line on a nontangential curve concave westerly having a radius of 1332.39 feet, a central angle of 22 degrees 17 minutes 31 seconds and a chord azimuth of 345 degrees 23 minutes 37 seconds; thence westerly 252 degrees 22 minutes 26 seconds azimuth 415.24 feet; thence southerly 179 degrees 09 minutes 03 seconds azimuth 196.08 feet to the point of beginning.

Said tract contains 4.82 acres more or less.

Have caused the same to be surveyed and platted as NORTHERN HEIGHTS EAST ELEVENTH SUBDIVISION and do hereby donate and dedicate to the public for public use forever the thoroughfares and grant the easements as shown on this plat.

In witness whereof, said Payne Company has caused these presents to be signed by its proper Officers this 25th day of September, 1995.

*Harold E. Payne*  
Harold E. Payne, Chairman  
*Roger H. Payne*  
Roger H. Payne, President

STATE OF MINNESOTA  
COUNTY OF OLMTSTED

The foregoing instrument was acknowledged before me this 25th day of September, 1995, by Harold E. Payne and Roger H. Payne, Chairman and President respectively, of Payne Company, a Minnesota Corporation on behalf of the Corporation.

*Harold M. Malice*  
Notary Public, Olmsted County, MN  
My Commission Expires 1/31/2000

In witness whereof, said City of Rochester has caused these presents to be signed by its proper Officers this 18 day of Sept., 1995.

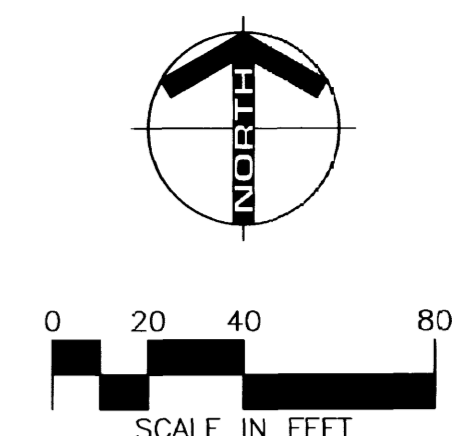
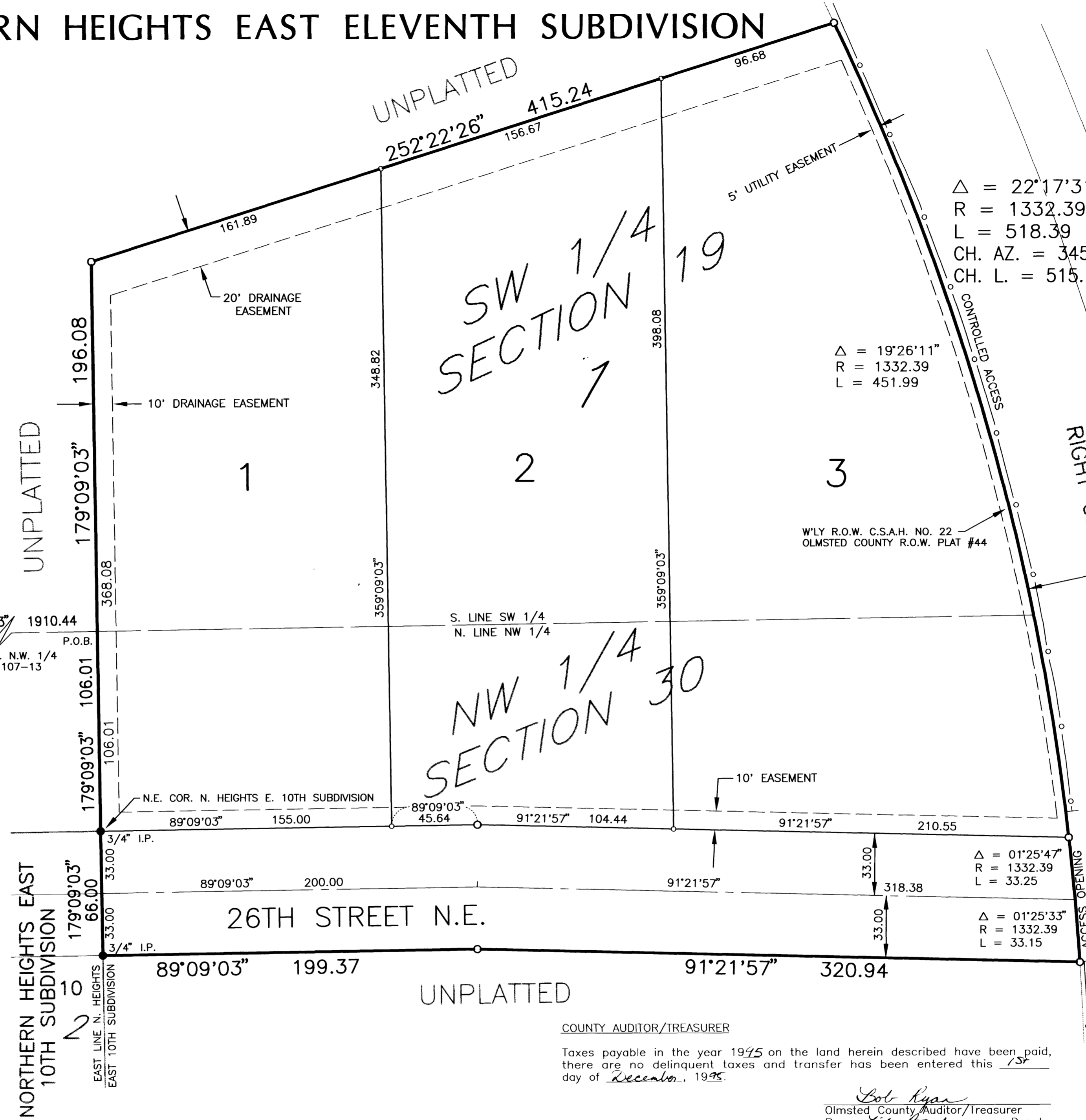
*John Hinzler*  
Charles Hinzler, Mayor  
*Carole A. Grimm*  
Carole A. Grimm, City Clerk

STATE OF MINNESOTA  
COUNTY OF OLMTSTED

The foregoing instrument was acknowledged before me this 18 day of Sept., 1995, by Charles Hinzler and Carole A. Grimm, Mayor and City Clerk respectively, of the City of Rochester, a Minnesota Municipal Corporation on behalf of the Corporation.

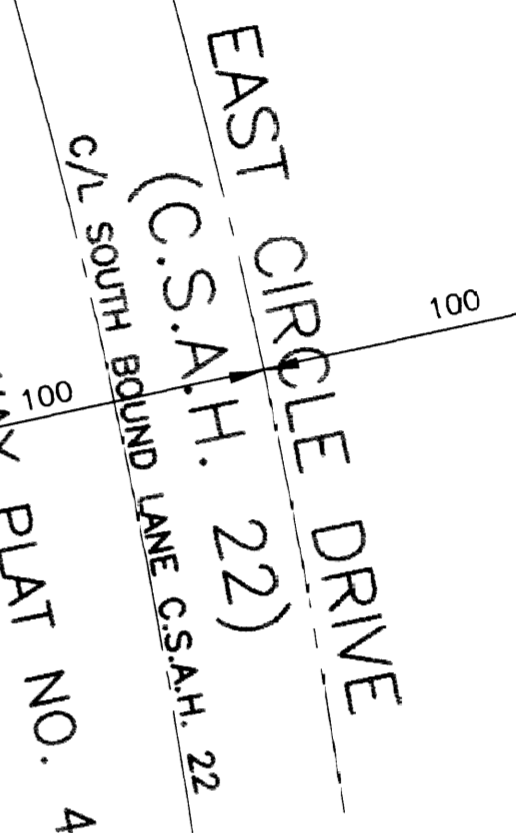
*Judy Kay Scherr*  
JUDY KAY SCHERR  
NOTARY PUBLIC-MINNESOTA  
MY COMMISSION EXPIRES 1-31-00

*Judy Kay Scherr*  
Notary Public, Olmsted County, MN  
My Commission Expires 2000



**YAGGY COLBY ASSOCIATES**  
ENGINEERS • ARCHITECTS  
SURVEYORS • PLANNERS  
LANDSCAPE ARCHITECTS  
717 THIRD AVENUE SOUTHEAST  
ROCHESTER, MINNESOTA 55904  
507-286-6464  
FAX 507-286-5054

- #### MONUMENTS
- 1/2" Rebars
  - 3/4" Iron Pipes
  - Found Monuments (Pipe, Rod, Etc.)
  - No Monuments Found or Set
- All monuments set have a plastic cap stamped R.L.S. 20703.



### COUNTY AUDITOR/TREASURER

Taxes payable in the year 1995 on the land herein described have been paid, there are no delinquent taxes and transfer has been entered this 1st day of December, 1995.

*Bob Ryan*  
Olmsted County Auditor/Treasurer  
By *Sally Barty* Deputy

### COUNTY RECORDER 717246

Document Number \_\_\_\_\_

I hereby certify that this instrument was filed in the Office of the County Recorder for record on this 1 day of December, 1995, at 5 o'clock P.m. and was duly recorded in Olmsted County Records.

*Carol M. Ferrer*  
Olmsted County Recorder  
By *Carol M. Ferrer* Deputy

### COUNTY SURVEYOR

I certify that this plat has been checked mathematically and that the plat conforms to applicable platting laws.

This 25th day of Sept., 1995.

*Edward P. Kusile*  
Olmsted County Surveyor

### BEARINGS

Plat bearings are Minnesota State Plane Grid Azimuths measured to the right from Grid North.

### UTILITY EASEMENT DEFINED

An unobstructed easement for the construction and maintenance of all necessary overhead, underground or surface public utilities, including rights to conduct drainage and trimming on said easement.

### DRAINAGE EASEMENT DEFINED

An unobstructed easement for the construction and maintenance of underground and surface drainage facilities and utility easement.

### CONTROLLED ACCESS DEFINED

Ingress and egress to, from or across the abutting roadway is restricted by the road authority pursuant to Minnesota State Statute 160.08.

- U.E. = UTILITY EASEMENT  
D.E. = DRAINAGE EASEMENT

PROJECT NUMBER 4573  
COMPUTER FILE 4573SF01.DWG  
DATE: 08/14/95  
DRAFTSPERSON: R.A.S.