

# SAMARITAN BETHANY SUBDIVISION

ROCHESTER, MINNESOTA

I hereby certify that I have surveyed and platted the property described on this plat as SAMARITAN BETHANY SUBDIVISION; that this plat is a correct representation of the survey; that all distances are correctly shown on the plat in feet and hundredths of a foot; that all monuments have been correctly placed in the ground as shown; that the outside boundary lines are correctly designated on the plat, and that there are no wet lands or public highways to be designated other than as shown.

*James E. Swanson*  
James E. Swanson, R.L.S.  
Minnesota Registration Number 11622

State of Minnesota  
County of Olmsted

The surveyor's certificate was subscribed and sworn to before me, a Notary Public, this 24<sup>th</sup> day of April, 1980.

*Howard E. Hunt*  
Notary Public, Olmsted County



My commission expires

                     OF TITLES

DOCUMENT NUMBER 32623

I hereby certify that this instrument was filed in the Office of the                      OF TITLES

for record on this 14<sup>th</sup> day of May, 1980, at 4 o'clock P.M., and was duly recorded in the Olmsted County records.

By *Lyle Lubahn*  
                     OF TITLES  
*Deputy*

No delinquent taxes due and transfer entered this 14<sup>th</sup> day of May, 1980.

*Rose Brauning*  
County Auditor

County Surveyor

I certify that this plat has been checked mathematically and that the plat conforms to the applicable platting laws, this 1<sup>st</sup> day of May, 1980.

*Roger W. Brand*  
Olmsted County Surveyor

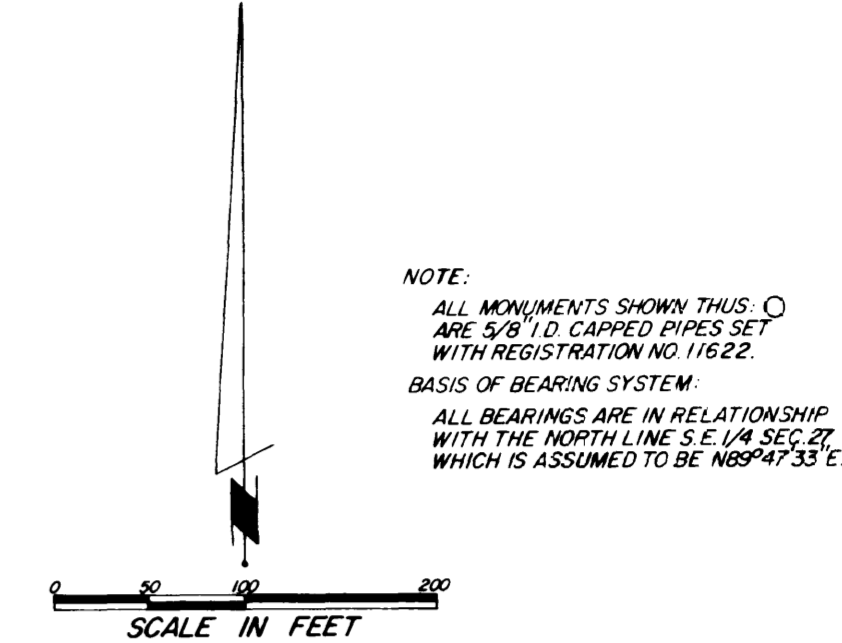
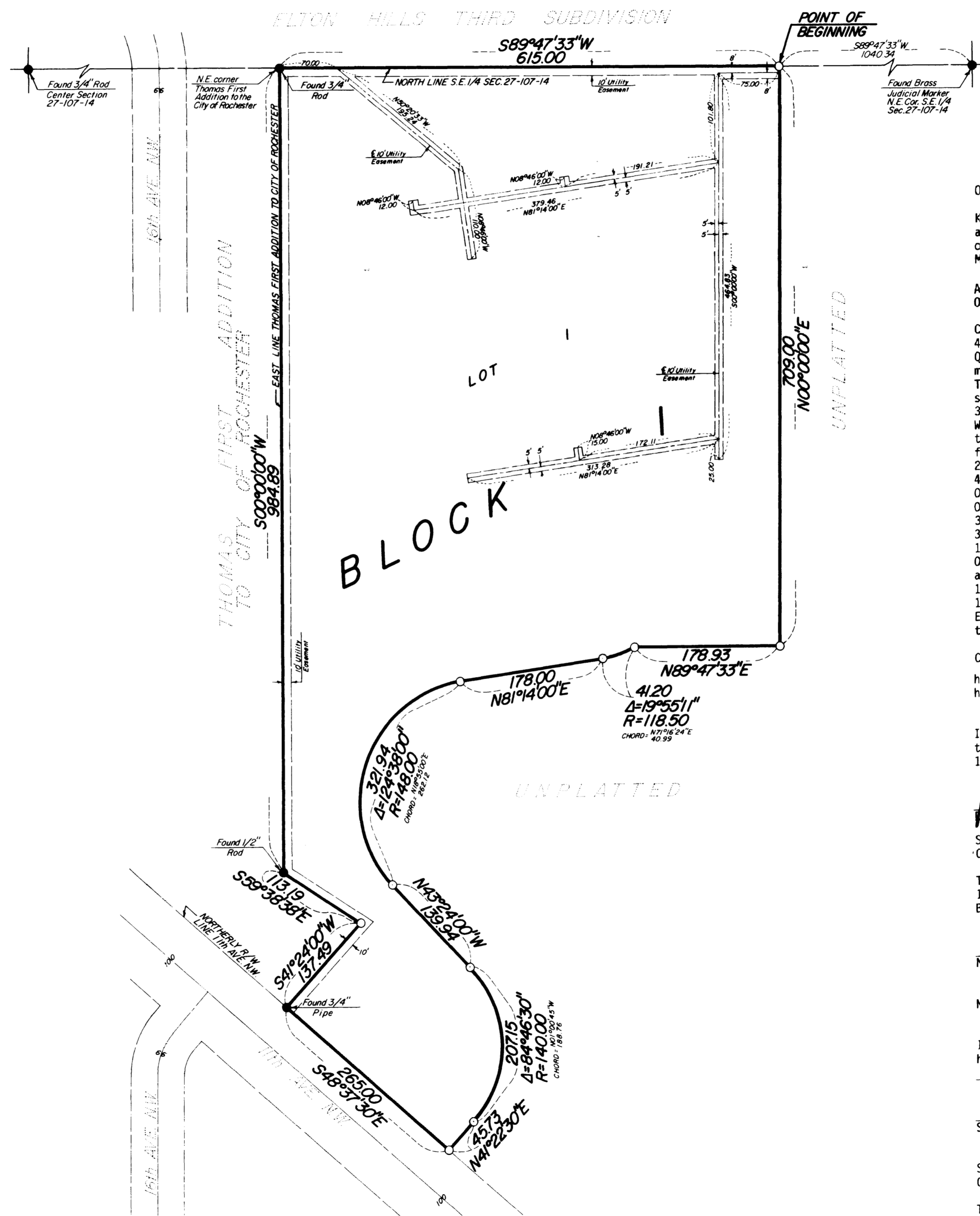
State of Minnesota  
County of Olmsted  
City of Rochester

I, Carole A. Grimm, City Clerk in and for the City of Rochester, do hereby certify that on the 5<sup>th</sup> day of May, 1980, the accompanying plat was duly approved by the Common Council of the City of Rochester. In testimony thereof I have hereto signed my name and affixed the seal of said City of Rochester this 6<sup>th</sup> day of May, 1980.

*Carole A. Grimm*  
City Clerk

Utility Easement Defined:

An unobstructed easement for the construction and maintenance of all necessary overhead, underground, or surface public utilities including rights to conduct drainage and trimming on said easement.



Owner's Dedication

KNOW ALL MEN BY THESE PRESENTS: That Bethany Samaritan, Inc., a Minnesota Corporation, and the Academy of Our Lady of Lourdes, a nonprofit corporation, owners and proprietors of the following described property situated in the City of Rochester, State of Minnesota to wit:

A part of the Southeast Quarter of Section 27, Township 107 North, Range 14 West, Olmsted County, Minnesota described as follows:

Commencing at the northeast corner of said Southeast Quarter; thence South 89 degrees 47 minutes 33 seconds West, assumed bearing, along the north line of said Southeast Quarter, 1040.34 feet to the point of beginning; thence continue South 89 degrees 47 minutes 33 seconds West along said north line, 615.00 feet to the northeast corner of THOMAS FIRST ADDITION TO THE CITY OF ROCHESTER; thence South 00 degrees 00 minutes 00 seconds West along the east line of said Addition, 984.89 feet; thence South 59 degrees 38 minutes 38 seconds East, 113.19 feet; thence South 41 degrees 24 minutes 00 seconds West, 137.49 feet to a point on the northerly right of way line of 11th Avenue N.W.; thence South 48 degrees 37 minutes 30 seconds East along said right of way line, 265.00 feet; thence North 41 degrees 22 minutes 30 seconds East, 45.73 feet; thence northerly 207.15 feet along a tangential curve concave to the west, central angle of 84 degrees 46 minutes 30 seconds, radius of 140.00 feet, and the chord of said curve bears North 01 degrees 00 minutes 45 seconds West, 188.76 feet; thence North 43 degrees 24 minutes 00 seconds West, tangent to said curve, 139.94 feet; thence northerly and northeasterly 321.94 feet along a tangential curve concave easterly, central angle of 124 degrees 38 minutes 00 seconds, radius of 148.00 feet, and the chord of said curve bears North 18 degrees 55 minutes 00 seconds East, 262.12 feet; thence North 81 degrees 14 seconds 00 minutes East, tangent to said curve, 178.00 feet; thence northeasterly 41.20 feet along a tangential curve concave northwesterly, central angle of 19 degrees 55 minutes 11 seconds, radius of 118.50 feet, and the chord of said curve bears North 71 degrees 16 minutes 24 seconds East, 40.99 feet; thence North 89 degrees 47 minutes 33 seconds East, 178.93 feet; thence North 00 degrees 00 minutes 00 seconds East, 709.00 feet to the point of beginning.

Containing 12.11 acres.  
have cause the same to be surveyed and platted as SAMARITAN BETHANY SUBDIVISION and do hereby dedicate the easements as shown on this plat.

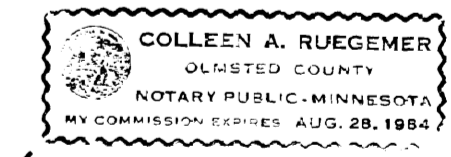
In witness whereof said Bethany Samaritan, Inc., a Minnesota corporation, has caused these presents to be signed by its proper officers this 30<sup>th</sup> day of April, 1980.

*R.W. Fininger*, President  
*Lyle Lubahn*, Secretary

State of Minnesota  
County of Olmsted

The foregoing instrument was acknowledged before me this 30<sup>th</sup> day of April, 1980, by R.W. Fininger, its President, and Lyle Lubahn, its Secretary, officers of Bethany Samaritan, Inc., on behalf of the corporation.

*Colleen A. Ruegamer*  
Notary Public, Olmsted County, Minnesota



My commission expires August 28, 1984

In witness whereof said The Academy of Our Lady of Lourdes, a nonprofit corporation has caused these presents to be signed by its proper officers this first day of May, 1980.

*Sister Kathleen Van Groll*, President  
*Sister Sarto Kaiser*, Treasurer

State of Minnesota  
County of Olmsted

The foregoing instrument was acknowledged before me this 1<sup>st</sup> day of May, 1980, by Sister Kathleen Van Groll, its President, and Sister Sarto Kaiser, its Treasurer, officers of The Academy of Our Lady of Lourdes on behalf of the corporation.

*Sister M. Alcantara Schneider*  
Notary Public, Olmsted County, Minnesota

PREPARED BY:  
McGHEE & BETTS, INC.  
CONSULTING ENGINEERS  
LAND SURVEYORS  
ROCHESTER, MINNESOTA

My commission expires July 8, 1984

OFFICIAL PLAT

SAMARITAN BETHANY SUBDIVISION