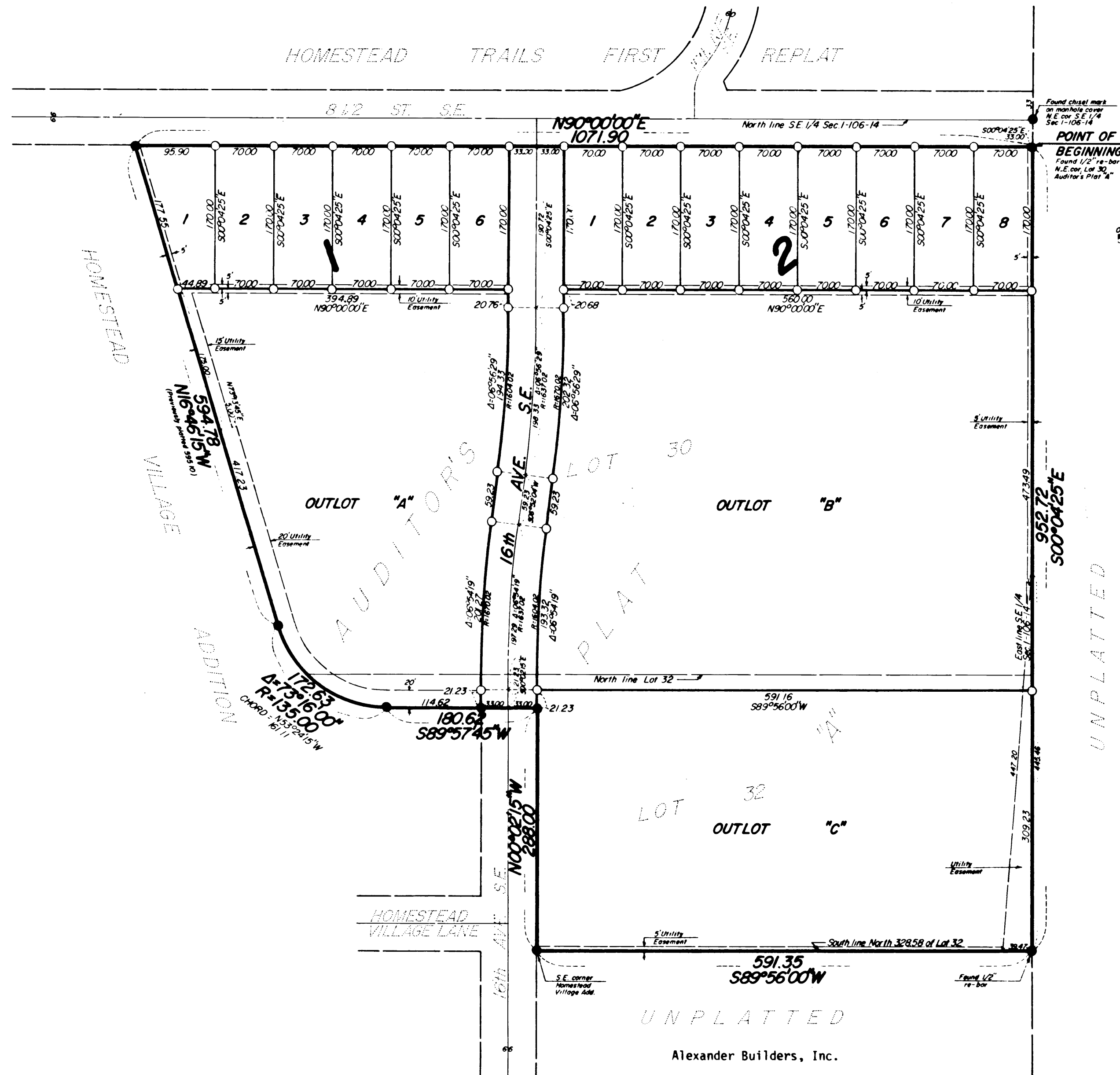


HOMESTEAD ACRES

ROCHESTER, MINNESOTA



NOTE
 ALL MONUMENTS SHOWN THIS ARE 5/8" I.D. CAPPED PIPES SET WITH REGISTRATION NO. 11622.
 ALL MONUMENTS SHOWN THIS ARE FOUND 5/8" PIPES UNLESS OTHERWISE NOTED.
 BASIS FOR BEARING SYSTEM:
 ALL BEARINGS ARE IN RELATIONSHIP WITH THE EAST LINE SE 1/4 SEC. 1 WHICH IS ASSUMED TO BE S00°04'25"E.

SCALE IN FEET

I hereby certify that I have surveyed and platted the property described on this plat as HOMESTEAD ACRES; that this is a correct representation of the survey; that all distances are correctly shown on the plat; that all monuments have been correctly placed in the ground as shown; that the outside boundary lines are correctly designated on the plat; and that there are no wet lands or public highways to be designated on said plat other than as shown thereon.

James E. Swanson
 James E. Swanson, R.L.S.
 Minnesota Registration Number 11622

State of Minnesota
 County of Olmsted

The surveyor's certificate was subscribed and sworn to before me, a Notary Public, this 26th day of March 1980.

Howard E. Hunt
 Notary Public, Olmsted County, Minnesota
 My commission expires

No delinquent taxes due and transfer entered this 28th day of April 1980.

Rosa Brannan by Nelson Nelson, Deputy
 County Auditor

County Surveyor

I certify that this plat has been checked mathematically and that the plat conforms to the applicable platting laws, this day of March 28 1980.

Robert N. Brand
 Olmsted County Surveyor

State of Minnesota
 County of Olmsted
 City of Rochester

I, Carole A. Grimm, City Clerk, in and for the City of Rochester, do hereby certify that on the 21st day of April 1980, the accompanying plat was duly approved by the Common Council of the City of Rochester. In testimony thereof I have hereunto signed my name and affixed the seal of said City of Rochester this 22 day of APRIL 1980.

Carole A. Grimm
 City Clerk

COUNTY RECORDER 481027
 DOCUMENT NUMBER

I hereby certify that this instrument was filed in the Office of the County Recorder for record on this 28 day of April 1980, at 4 O'Clock P..M., and was duly recorded in the Olmsted County records.

By *Lewis J. Johnston*
 County Recorder

Deputy

Utility Easement Defined:

An unobstructed easement for the construction and maintenance of all necessary overhead, underground, or surface public utilities including rights to conduct drainage and trimming on said easement.

Owner's Dedication

KNOW ALL MEN BY THESE PRESENTS: That Mayo Foundation, a Minnesota Corporation, and Alexander Builders, Inc., a Minnesota Corporation, owners and proprietors of the following described property situated in the City of Rochester, State of Minnesota to wit:

A part of Lot 30 and the North 328.58 feet of Lot 32, Auditors Plat "A", Olmsted County, Minnesota, being more particularly described as follows:

Commencing at the Northeast corner of the Southeast Quarter of Section 1 (One), Township 106 North, Range 14 West, Olmsted County, Minnesota; thence South 00 degrees 04 minutes 25 seconds East, assumed bearing, along the east line of said Quarter section, 33.00 feet for a point of beginning; thence continue South 00 degrees 04 minutes 25 seconds East, along said east line, 952.72 feet to the south line of the North 328.58 feet of said Lot 32; thence South 89 degrees 56 minutes 00 seconds West, along said south line, 591.35 feet to the southeast corner of "Homestead Village Addition" and the next 4 courses are along the easterly boundary of said Addition; thence North 00 degrees 02 minutes 15 seconds West, 288.00 feet; thence South 89 degrees 57 minutes 45 seconds West, 180.62 feet; thence Northwesterly, 172.63 feet along a tangential curve, concave to the Northeast, central angle of 73 degrees 16 minutes, radius of 135.00 feet, and the chord bears North 53 degrees 24 minutes 15 seconds West, 161.11 feet; thence North 16 degrees 46 minutes 15 seconds West, 594.78 feet, (previously platted as 595.10 feet), to the most northeasterly corner of said Addition; thence North 90 degrees 00 minutes East, along the north line of said Lot 30, a distance of 1071.90 feet to the point of beginning.

Containing 18.71 Acres.

have caused the same to be surveyed and platted as HOMESTEAD ACRES and do hereby donate and dedicate to the public, for the public use forever the avenue, and grant the easements as shown on this plat.

Mayo Foundation

In witness whereof said Mayo Foundation, a Minnesota Corporation, has caused these presents to be signed by its proper officers and its corporate seal to be hereunto affixed this 27 day of March 1980.

W.E. Mayberry
 W.E. Mayberry, Vice Chairman

Gregg Orwoll
 Gregg Orwoll, Secretary

State of Minnesota
 County of Olmsted

The foregoing instrument was acknowledged before me this 27 day of March 1980, by W.E. Mayberry its Vice Chairman and Gregg Orwoll its Secretary officers of Mayo Foundation on behalf of the corporation.

Arthur E. Brown
 Notary Public, Olmsted County, Minnesota

My commission expires April 6, 1983

Alexander Builders, Inc.

In witness whereof said Alexander Builders, Inc., a Minnesota Corporation, has caused these presents to be signed by its proper officer this 28th day of March 1980.

David G. Alexander
 David G. Alexander, President

State of Minnesota
 County of Olmsted

The foregoing instrument was acknowledged before me this 28th day of March 1980, by David G. Alexander, President of Alexander Builders, Inc., on behalf of the corporation.

Howard E. Hunt
 Notary Public, Olmsted County, Minnesota

My commission expires

OFFICIAL PLAT

PREPARED BY:
 McGHIE & BETTS, INC.
 CONSULTING ENGINEERS
 LAND SURVEYORS
 ROCHESTER, MINNESOTA

HOMESTEAD ACRES