

I hereby certify that I have surveyed and platted the property described on this plat as WESTERN SECOND SUBDIVISION; that this is a correct representation of the survey; that all distances are correctly shown on the plat; that all monuments have been correctly placed in the ground as shown; that the outside boundary lines are correctly designated on the plat; and that there are no wet lands or public highways to be designated on said plat other than as shown thereof.

# WESTERN SECOND SUBDIVISION

## ROCHESTER, MINNESOTA

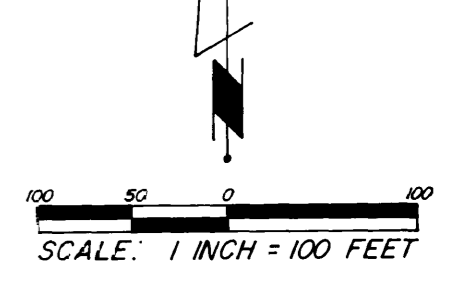
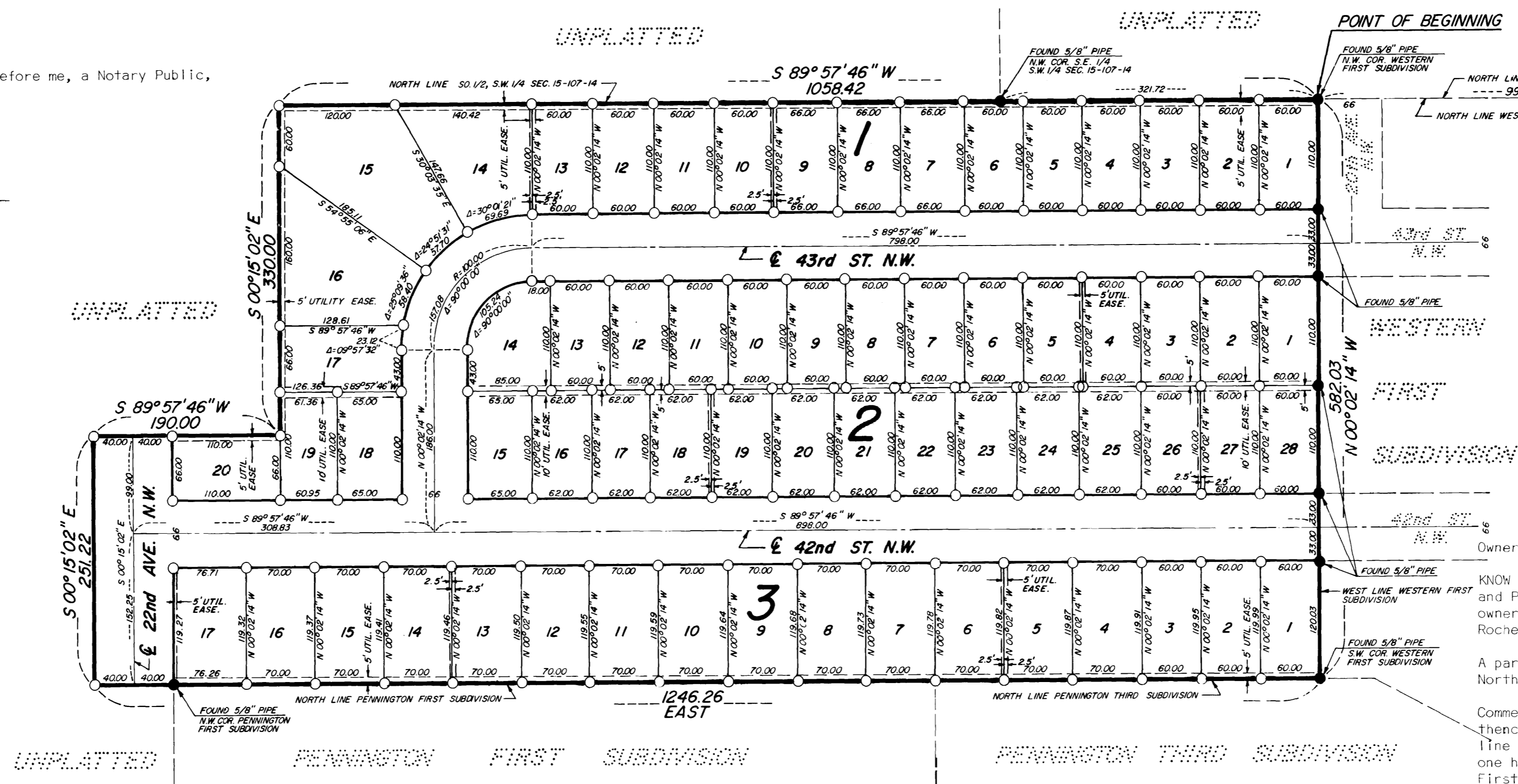
*James E. Swanson*  
James E. Swanson, R.L.S.  
Minnesota Registration No. 11622

State of Minnesota  
County of Olmsted

The surveyor's certificate was subscribed and sworn to before me, a Notary Public, this 1st day of November 1978.

*Howard E. Hunt*  
Notary Public, Olmsted County, Minnesota  
My commission expires Dec. 9, 1978

My commission expires Dec. 9, 1978



NOTE:  
ALL MONUMENTS SHOWN THIS ARE 5/8\"/>

County Surveyor

I certify that this plat has been checked mathematically and that the plat conforms to the applicable platting laws, this 1st day of Nov 1978 A.D.

*Roger W. Brand*  
Olmsted County Surveyor  
410137

Filed for record this 14 day of November 1978 at 10 o'clock A.m. in book      of plats, on page     , as instrument number     .

**LOIS FINSTUEN**  
County Recorder, Olmsted County, Minnesota  
*Catherine S. Evans, Deputy*

State of Minnesota  
County of Olmsted  
City of Rochester

I, Carole A. Grimm, City Clerk in and for the City of Rochester, do hereby certify that on the 6 day of November 1978 A.D. the accompanying plat was duly approved by the Common Council of the City of Rochester. In testimony thereof I have here unto signed my name and affixed the seal of said City of Rochester this 7 day of November 1978 A.D.

*Carole A. Grimm*  
City Clerk, City of Rochester

No delinquent taxes due and transfer entered this 14th day of November 1978.

*Ross Branning*  
County Auditor  
*Melva Nelson, Deputy*

Owner's Dedication Continued:

Pennington Properties, a Co-partnership  
*David Malcolm Pennington*  
David Malcolm Pennington, Partner  
*Donald John Pennington*  
Donald John Pennington, Partner

State of Minnesota  
County of Olmsted

The foregoing instrument was acknowledged before me this 2nd day of November 1978 by David Malcolm Pennington, Partner, and Donald John Pennington, Partner, on behalf of Pennington Properties, a co-partnership under the laws of the State of Minnesota.

*Howard E. Hunt*  
Notary Public, Olmsted County, Minnesota  
My commission expires Dec. 9, 1978

Utility Easement Defined:

An unobstructed easement for the construction and maintenance of all necessary overhead, underground, or surface public utilities including rights to conduct drainage and trimming on said easement.

Owner's Dedication  
KNOW ALL MEN BY THESE PRESENTS: That Western Walls, Inc., a Minnesota Corporation, and Pennington Properties, a co-partnership under the laws of the State of Minnesota, owners and proprietors of the following described property situated in the City of Rochester, State of Minnesota, to wit:

A part of the south one half of the Southwest Quarter of Section 15, Township 107 North, Range 14 West, Rochester, Minnesota, described as follows:

Commencing at the southeast corner of the Southwest Quarter of said Section 15; thence north 00 degrees 20 minutes 20 seconds west, assumed bearing, along the east line of said Southwest Quarter, 1315.71 feet to the northeast corner of the south one half of said Southwest Quarter, also being the northeast corner of Western First Subdivision; thence south 89 degrees 57 minutes 46 seconds west, along the north line of said south one half, also being the north line of said Western First Subdivision, 998.25 feet to the northwest corner of said Western First Subdivision for a point of beginning; thence continue south 89 degrees 57 minutes 46 seconds west, along the north line of said south one half, 1058.42 feet; thence south 00 degrees 15 minutes 02 seconds east, 330.00 feet; thence south 89 degrees 57 minutes 46 seconds west, 190.00 feet; thence south 00 degrees 15 minutes 02 seconds east, 251.22 feet to a point on the westerly extension of the north line of Pennington First Subdivision; thence due east, along the north line of Pennington First Subdivision and Pennington Third Subdivision, 1246.26 feet to the southwest corner of said Western First Subdivision; thence north 00 degrees 02 minutes 14 seconds west, along the west line of said Western First Subdivision, 582.03 feet to the point of beginning.

Containing 15.22 acres.

Have caused the same to be surveyed and platted as WESTERN SECOND SUBDIVISION, and do hereby donate and dedicate to the public, for the public use forever the streets and avenues and grant the easements as shown on this plat. In witness whereof said Western Walls, Inc., a Minnesota Corporation has caused these presents to be signed by its proper officers and its corporate seal to be hereunto affixed this 1st day of November 1978. In witness whereof said Pennington Properties, a Co-partnership under the laws of the State of Minnesota, has caused these presents to be signed this 1st day of November 1978.

Western Walls, Inc.  
*David G. Alexander*  
David G. Alexander, President

*Robert D. DeWitz*  
Robert D. DeWitz, Secretary

State of Minnesota  
County of Olmsted

The foregoing instrument was acknowledged before me this 1st day of November 1978, by David G. Alexander, President, and Robert D. DeWitz, Secretary, officers of Western Walls, Inc., on behalf of the corporation.

*Howard E. Hunt*  
Notary Public, Olmsted County, Minnesota  
My commission expires Dec. 9, 1978

PREPARED BY:  
**McGhie & Betts, Inc.**  
CONSULTING ENGINEER'S  
ROCHESTER, MINNESOTA

### OFFICIAL PLAT