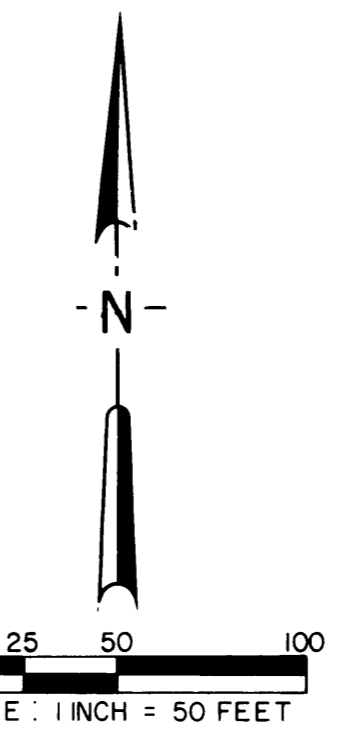
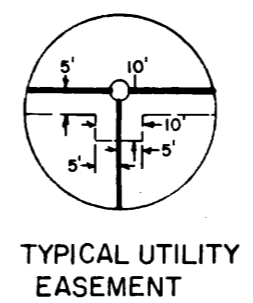
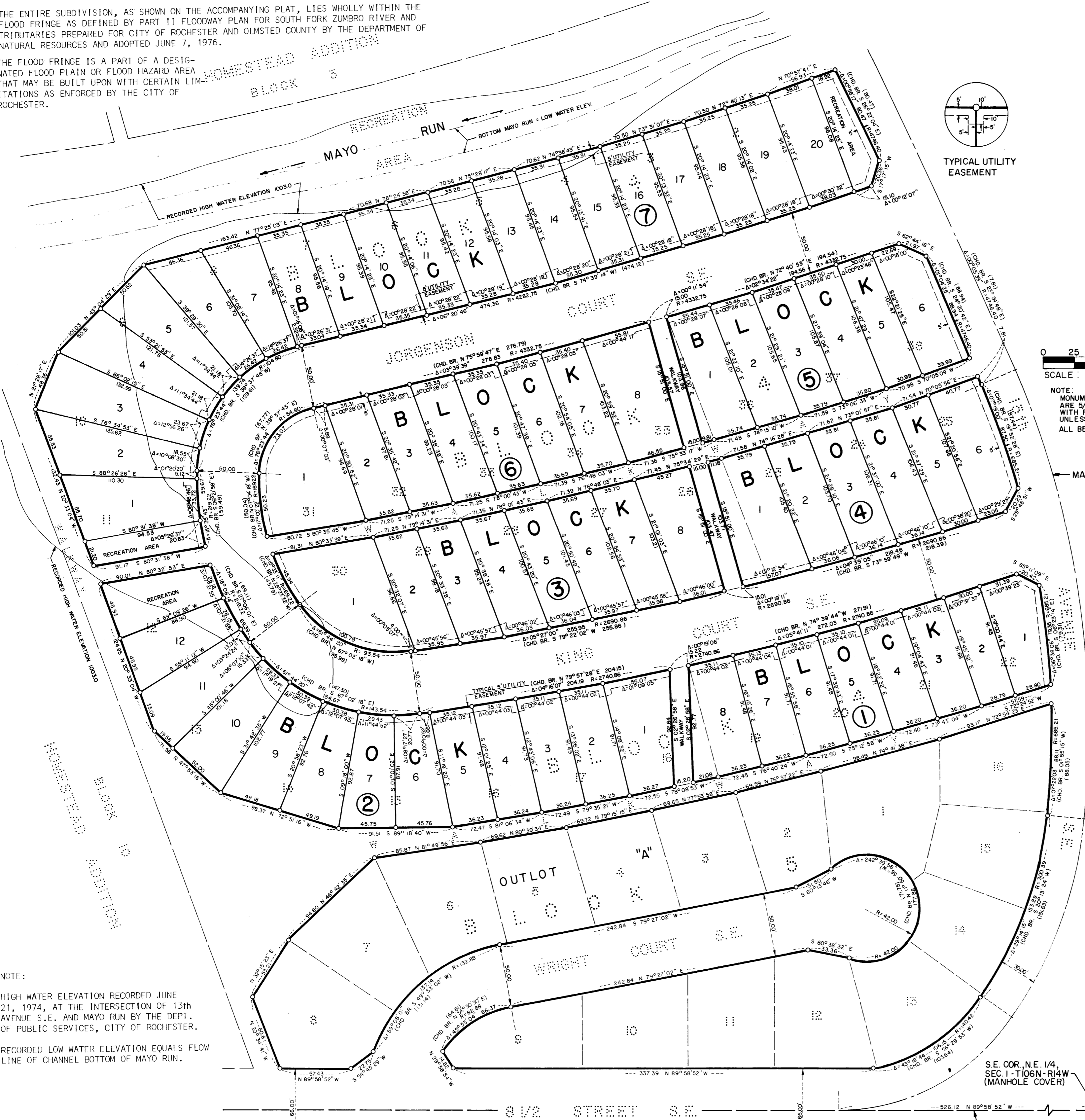


NOTE:

THE ENTIRE SUBDIVISION, AS SHOWN ON THE ACCOMPANYING PLAT, LIES WHOLLY WITHIN THE FLOOD FRINGE AS DEFINED BY PART 11 FLOODWAY PLAN FOR SOUTH FORK ZUMBO RIVER AND TRIBUTARIES PREPARED FOR CITY OF ROCHESTER AND OLMDSTED COUNTY BY THE DEPARTMENT OF NATURAL RESOURCES AND ADOPTED JUNE 7, 1976.

THE FLOOD FRINGE IS A PART OF A DESIGNATED FLOOD PLAIN OR FLOOD HAZARD AREA THAT MAY BE BUILT UPON WITH CERTAIN LIMITATIONS AS ENFORCED BY THE CITY OF ROCHESTER.



NOTE: MONUMENTS SHOWN THUS \odot ARE 5/8" I.D. CAPPED PIPES SET WITH REGISTRATION NO. 6980 UNLESS OTHERWISE NOTED. ALL BEARINGS ASSUMED.

MATCH LINE

S.E. COR. N.E. 1/4, SEC. 1-T106N-R14W (MANHOLE COVER)

SOUTH LINE, N.E. 1/4, SEC. 1-106-14

B.M. ELEV. 1006.93 USGS DATUM
HYDRANT ARROW S.W. COR. OF HOMESTEAD VILLAGE LANE AND 8-1/2 STREET S.E.

3 1/2 STREET S.E.

337.39 N 89° 58' 52" W

526.12 N 89° 58' 52" W

42.00

42.00

42.00

42.00

42.00

42.00

42.00

42.00

42.00

42.00

42.00

42.00

42.00

42.00

42.00

42.00

42.00

42.00

42.00

42.00

42.00

42.00

42.00

42.00

42.00

42.00

42.00

42.00

42.00

42.00

42.00

42.00

42.00

42.00

42.00

42.00

42.00

42.00

42.00

42.00

42.00

42.00

42.00

42.00

42.00

42.00

42.00

42.00

42.00

42.00

42.00

42.00

42.00

42.00

42.00

42.00

42.00

42.00

42.00

42.00

42.00

42.00

42.00

42.00

42.00

42.00

42.00

42.00

42.00

42.00

42.00

42.00

42.00

42.00

42.00

42.00

42.00

42.00

42.00

42.00

42.00

42.00

42.00

42.00

42.00

42.00

42.00

42.00

42.00

42.00

42.00

42.00

42.00

42.00

42.00

42.00

42.00

42.00

42.00

42.00

42.00

42.00

42.00

42.00

42.00

42.00

42.00

42.00

42.00

42.00

42.00

42.00

42.00

42.00

42.00

42.00

42.00

42.00

42.00

42.00

42.00

42.00

42.00

42.00

42.00

42.00

42.00

42.00

42.00

42.00

42.00

42.00

42.00

42.00

42.00

42.00

42.00

42.00

42.00

42.00

42.00

42.00

42.00

42.00

42.00

42.00

42.00

42.00

42.00

42.00

42.00

42.00

42.00

42.00

42.00

42.00

42.00

42.00

42.00

42.00

42.00

42.00

42.00

42.00

42.00

42.00

42.00

42.00

42.00

42.00

42.00

42.00

42.00

42.00

42.00

42.00

42.00

42.00

42.00

42.00

42.00

42.00

42.00

42.00

42.00

42.00

42.00

42.00

42.00

42.00

42.00

42.00

42.00

42.00

42.00

42.00

42.00

42.00

42.00

42.00

42.00

42.00

42.00

42.00

42.00

42.00

42.00

42.00

42.00

42.00

42.00

42.00

42.00

42.00

42.00

42.00

42.00

42.00

42.00

42.00

42.00

42.00

42.00

42.00

42.00

42.00

42.00

42.00

42.00

42.00

42.00

42.00

42.00

42.00

42.00

42.00

42.00

42.00

42.00

42.00

42.00

42.00

42.00

42.00

42.00

42.00

42.00

42.00

42.00

42.00

42.00

42.00

42.00

42.00

42.00

42.00

42.00

42.00

42.00

42.00

42.00

42.00

42.00

42.00

42.00

42.00

42.00

42.00

42.00

42.00

42.00

42.00

42.00

42.00

42.00

42.00

42.00

42.00

42.00

42.00

42.00

42.00

42.00

42.00

42.00

42.00

42.00

42.00

42.00

42.00

42.00

42.00

42.00</

HOMESTEAD TRAILS FIRST REPLAT ROCHESTER, MINNESOTA

SURVEYOR'S CERTIFICATE

STATE OF MINNESOTA) S.S.
COUNTY OF OLMSTED)

I DO HEREBY CERTIFY THAT I HAVE SURVEYED AND REPLATTED THE PROPERTY DESCRIBED ON THIS PLAT AS "HOMESTEAD TRAILS FIRST REPLAT" THAT THIS IS A CORRECT REPRESENTATION OF SAID SURVEY; THAT ALL DISTANCES ARE CORRECTLY SHOWN ON SAID PLAT IN FEET AND DECIMALS OF A FOOT; THAT ALL MONUMENTS HAVE BEEN CORRECTLY PLACED IN THE GROUND AS SHOWN ON THE PLAT; THAT THE OUTSIDE BOUNDARY LINES ARE CORRECTLY DESIGNATED ON THE PLAT; THAT THERE ARE NO WET LANDS; AND THAT SAID PLAT HAS BEEN PREVIOUSLY PLATTED AS PART OF HOMESTEAD ADD.

Douglas N. Betts
DOUGLAS N. BETTS, P.E. & R.L.S.
MINNESOTA REGISTRATION NO. 6980

STATE OF MINNESOTA) S.S.
COUNTY OF OLMSTED)

THE ABOVE SURVEYOR'S CERTIFICATE WAS SUBSCRIBED AND SWORN TO BEFORE ME, A NOTARY PUBLIC WITHIN AND FOR SAID COUNTY AND STATE ON THIS 21st DAY OF April 1978 A.D.

Howard E. Hunt
NOTARY PUBLIC, OLMSTED COUNTY, MINNESOTA

MY COMMISSION EXPIRES 19 A.D. Notary Public, Olmsted County, Minn. My Commission Expires Dec. 9, 1978

COUNTY SURVEYOR'S CERTIFICATE OF APPROVAL

I CERTIFY THAT THIS PLAT HAS BEEN CHECKED MATHEMATICALLY AND THAT THE PLAT CONFORMS TO THE APPLICABLE PLATTING LAW:

APPROVED THIS 24th DAY OF April 1978 A.D.

BY *Roger W. Brand*
OLMSTED COUNTY SURVEYOR

NOTE:

THE FLOOD FRINGE IS A PART OF A DESIGNATED FLOOD PLAIN OR FLOOD HAZARD AREA THAT MAY BE BUILT UPON WITH CERTAIN LIMITATIONS AS ENFORCED BY THE CITY OF ROCHESTER.

THE ENTIRE SUBDIVISION, AS SHOWN ON THE ACCOMPANYING PLAT, LIES WHOLLY WITHIN THE FLOOD FRINGE AS DEFINED BY PART II FLOODWAY PLAN FOR SOUTH FORK ZUMBRO RIVER AND TRIBUTARIES PREPARED FOR CITY OF ROCHESTER AND OLMSTED COUNTY BY THE DEPARTMENT OF NATURAL RESOURCES AND ADOPTED JUNE 7, 1976.

UTILITY EASEMENT DEFINED:

AN UNOBSTRUCTED EASEMENT FOR THE CONSTRUCTION AND MAINTENANCE OF ALL NECESSARY OVERHEAD, UNDERGROUND, OR SURFACE PUBLIC UTILITIES INCLUDING RIGHTS TO CONDUCT DRAINAGE AND TRIMMING ON SAID EASEMENTS.

STATE OF MINNESOTA) S.S.
COUNTY OF OLMSTED)

I, CAROLE A. GRIMM, CITY CLERK IN AND FOR THE CITY OF ROCHESTER, DO HEREBY CERTIFY THAT ON THE 1st DAY OF May 1978 A.D., THE ACCOMPANYING PLAT WAS DULY APPROVED BY THE COMMON COUNCIL OF THE CITY OF ROCHESTER. IN TESTIMONY THEREOF I HAVE HEREUNTO SIGNED MY NAME AND AFFIXED THE SEAL OF SAID CITY OF ROCHESTER THIS 21st DAY OF May 1978 A.D.

Carole A. Grimm
CITY CLERK

NO DELINQUENT TAXES DUE AND TRANSFER ENTERED THIS 7th DAY OF May 1978 A.D.

Ross Brannan by Melva Nelson, Deputy
COUNTY AUDITOR

STATE OF MINNESOTA) S.S.
COUNTY OF OLMSTED)

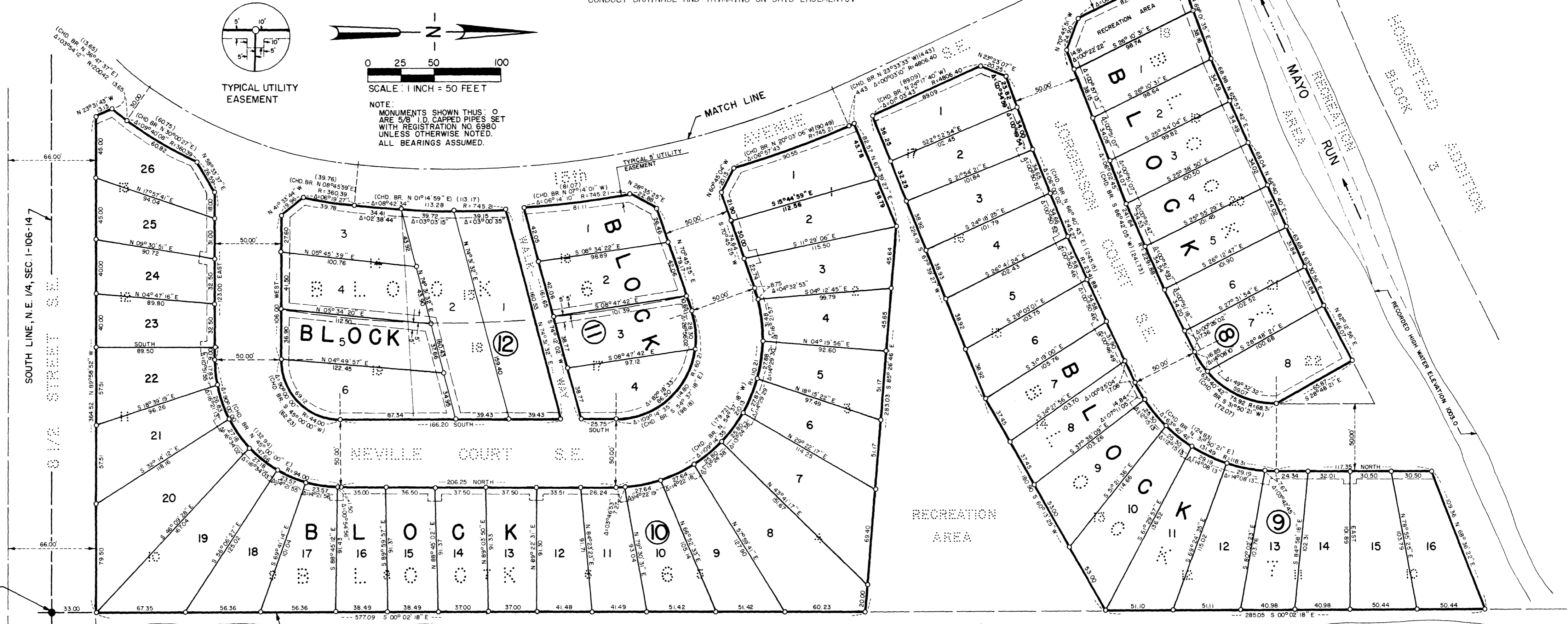
FILED FOR RECORD THIS 26th DAY OF October 1978 A.D. AT 4 1/2 O'CLOCK P.M. IN BOOK _____ OF PLATS ON PAGE _____ INSTRUMENT NO. 30369.

David Franklin
Jessie O. Lindgren, Deputy

NOTE:

HIGH WATER ELEVATION RECORDED JUNE 21, 1974, AT THE INTERSECTION OF 13 AVENUE S.E. AND MAYO RUN BY THE DEPT. OF PUBLIC SERVICES, CITY OF ROCHESTER.

RECORDED LOW WATER ELEVATION EQUALS FLOW LINE OF CHANNEL BOTTOM OF MAYO RUN.



OFFICIAL PLAT

PREPARED BY:
McGHEE & BETTS, INC.
CONSULTING ENGINEERS
ROCHESTER, MINNESOTA