

WESTWOOD FIRST SUBDIVISION

ROCHESTER, MINNESOTA

NOTE:
THE NORTH LINE N.W. 1/4
S.W. 1/4 SEC. 26-107-14
IS ASSUMED DUE EAST

0 25 50
SCALE 1 INCH = 50 FEET

Owner's Dedication:

KNOW ALL MEN BY THESE PRESENTS: that Valley Enterprises of Rochester, Inc., a Minnesota Corporation, owner and proprietor, and Olmsted Federal Savings and Loan Association, mortgagee of the following described property situated in the City of Rochester, State of Minnesota, to wit:

The north 3 acres of the east 10 acres of the Northwest Quarter of the Southwest Quarter of Section 26, Township 107 North, Range 14 West, being more particularly described by metes and bounds as follows:

Beginning at the northeast corner of the Northwest Quarter of the Southwest Quarter of said Section 26; thence due west, assumed bearing, along the north line of said Southwest Quarter, 329.69 feet to the northeast corner of Hiawatha First Subdivision; thence south 00 degrees 31 minutes 50 seconds west along the east line of said subdivision, 393.20 feet to the Southeast corner thereof; thence south 89 degrees 47 minutes east, 331.06 feet to the east line of said Quarter Quarter Section; thence north 00 degrees 19 minutes 47 seconds east along said east line, 394.44 feet to the point of beginning.

Containing 2.99 acres.

Have caused the same to be surveyed and platted as WESTWOOD FIRST SUBDIVISION and do hereby grant the easements as shown on this plat. In witness whereof said Valley Enterprises of Rochester, Inc., has caused these presents to be signed by its proper officers and its corporate seal to be hereunto affixed this 3 day of August 1978. In witness whereof said Olmsted Federal Savings and Loan Association has caused these presents to be signed by its proper officers and its corporate seal to be hereunto affixed this 3 day of August 1978.

Valley Enterprises of Rochester, Inc.

Olmsted Federal Savings & Loan Association

Glyndon L. West
Glyndon L. West, President

William H. Sipple
William H. Sipple, President

Everett D. Humke
Everett D. Humke, Vice President

State of Minnesota
County of Olmsted

The foregoing instrument was acknowledged before me this 3rd day of August 1978, by Glyndon L. West, President of Valley Enterprises of Rochester, Inc. on behalf of the corporation.

Howard E. Hunt
Notary Public, Olmsted County, Minnesota

My commission expires _____

State of Minnesota
County of Olmsted

The foregoing instrument was acknowledged before me this 4th day of August 1978, by William H. Sipple, President, and Everett D. Humke, Vice President, officers of Olmsted Federal Savings and Loan Association on behalf of the corporation.

Ruth M. Williams
Notary Public, Olmsted County, Minnesota

My commission expires 8-18-84

I hereby certify that I have surveyed and platted the property described on this plat as WESTWOOD FIRST SUBDIVISION; that this is a correct representation of the survey; that all distances are correctly shown on the plat; that all monuments have been correctly placed in the ground as shown; that the outside boundary lines are correctly designated on the plat; and that there are no wet lands or public highways to be designated on said plat other than as shown thereon.

Douglas N. Betts
Douglas N. Betts, P.E. & R.L.S.
Minnesota Registration No. 6980

State of Minnesota
County of Olmsted

The surveyor's certificate was subscribed and sworn to before me, a Notary Public this 3rd day of August 1978.

Howard E. Hunt
Notary Public, Olmsted County, Minnesota

My commission expires _____

Filed for record this 23 day of August 1978 at 4:12 o'clock P m. In book _____ of plats, on page _____ as Instrument number _____

Leis Gustafson
County Recorder, Olmsted County, Minnesota
Carla Ann Bahr, Deputy

County Surveyor

I certify that this plat has been checked mathematically and that the plat conforms to the applicable platting laws, this 4th day of Aug. 1978 A.D.

Roger W. Brand
Olmsted County Surveyor

State of Minnesota
County of Olmsted
City of Rochester

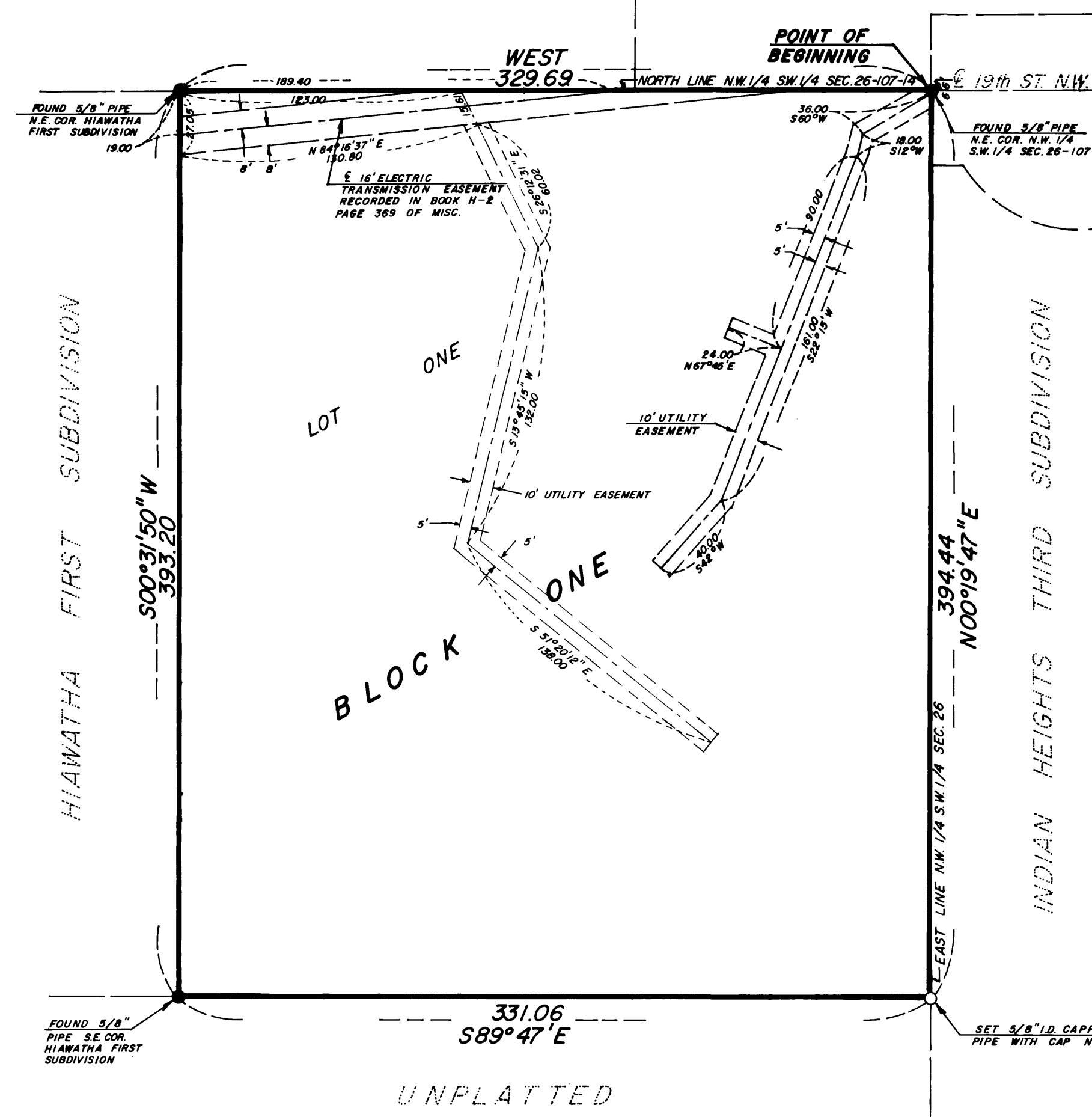
I, Carole A. Grimm, City Clerk in and for the City of Rochester, do hereby certify that on the 2 day of August 1978 A.D., the accompanying plat was duly approved by the Common Council of the City of Rochester. In testimony thereof I have hereunto signed my name and affixed the seal of said City of Rochester this 10 day of August 1978 A.D.

Carole A. Grimm
City Clerk, City of Rochester

No delinquent taxes due and transfer entered this 23rd day of August 1978.

Carol Brauning
County Auditor
Michael Nelson, Deputy

WOODGATE FIRST SUBDIVISION UNPLATTED



Utility Easement Defined:

An unobstructed easement for the construction and maintenance of all necessary overhead, underground, or surface public utilities including rights to conduct drainage and trimming on said easement.

OFFICIAL PLAT

PREPARED BY:
McGHEE & BETTS INC.
CONSULTING ENGINEERS
ROCHESTER, MINNESOTA

WESTWOOD FIRST SUBDIVISION