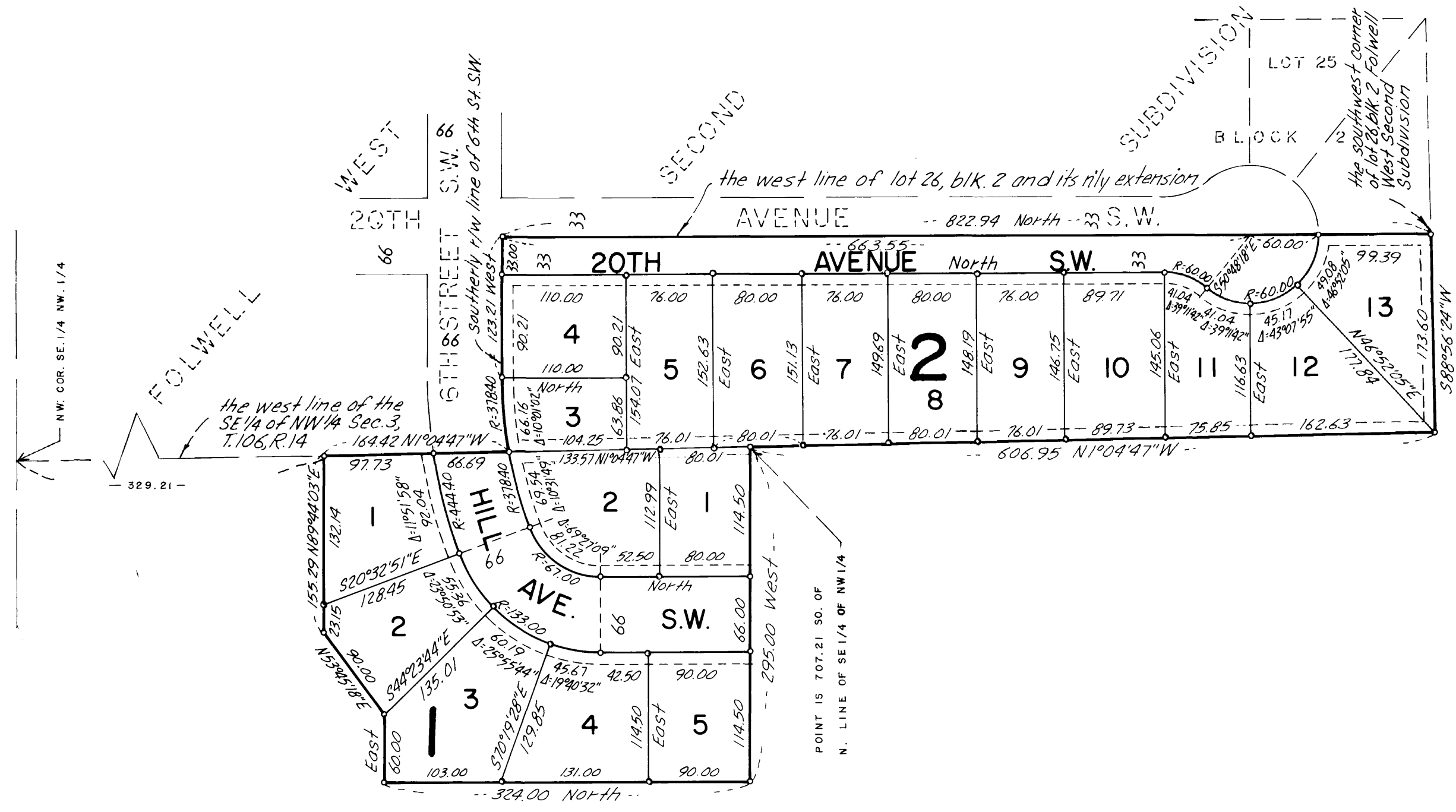
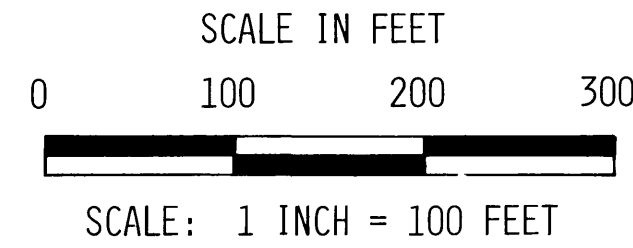


# FOLWELL WEST THIRD SUBDIVISION

**ADVANCE**  
SURVEYING & ENGINEERING CO.  
# 5 VIKING VILLAGE  
ROCHESTER, MINNESOTA 55901

BEARINGS ARE MINNESOTA COORDINATE SYSTEM, SOUTH ZONE



### CITY OF ROCHESTER

STATE OF MINNESOTA )  
COUNTY OF OLMSTED ) SS  
CITY OF ROCHESTER )

I, Carol A. Grimm, City Clerk in and for the City of Rochester, do hereby certify that on the 19 day of June 1978 A.D., the accompanying Plat was duly approved by the Common Council of the City of Rochester, Minnesota. In Testimony whereof I have signed my name and affixed the seal of said City of Rochester, Minnesota this 20 day of June 1978 A.D.

Carol A. Grimm  
City Clerk, City of Rochester, Minnesota

### OLMSTED COUNTY AUDITOR

No delinquent taxes due and transfer entered this 22nd day of June 1978 A.D.

Paul Brumby  
County Auditor, Olmsted County, Minnesota

### COUNTY RECORDER

STATE OF MINNESOTA )  
COUNTY OF OLMSTED )

Filed for record this 22 day of June 1978 A.D. at 4:1/2 o'clock P.M. in Book \_\_\_\_\_ of Plats on Page \_\_\_\_\_, Instrument No. \_\_\_\_\_

LONS FINSTUEI  
County Recorder, Olmsted County, Minnesota

### UTILITY EASEMENT DEFINED:

An unobstructed easement for the construction and maintenance of all necessary overhead, underground or surface, and public utilities including rights to conduct drainage and trimming on said easement.

MONUMENTS - "o" Denotes iron monument set and marked by Minnesota Registration No. 9235.

### DRAINAGE AND UTILITY EASEMENTS:

Drainage and Utility Easements are shown thus:   
Being 10 feet in width and adjoining lot lines as shown on the plat.

CENTERLINE CURVE DATA	R	T	L
Northeasterly Curve	411.40	74.57	147.54
Southwesterly Curve	100.00	69.51	121.22

### OWNER'S DEDICATION:

KNOW ALL MEN BY THESE PRESENTS: That Metro Development Corp., owners and proprietors; Olmsted Federal Savings and Loan Association, mortgagee; and Leslie E. Holtorf and Richard Holtorf, trustees under agreement for Agnes T. Holtorf and others, dated August 11, 1975, mortgagees of the following described property situated in the County of Olmsted, State of Minnesota to wit:

A TRACT OF LAND LYING WESTERLY OF THE FOLLOWING DESCRIBED LINE: Commencing at the Southwest corner of Lot 26, Block 2, FOLWELL WEST SECOND SUBDIVISION, Olmsted County, Minnesota; thence on a Minnesota Coordinate System, South Zone bearing of North along the West line of said Lot 26 and its northerly extension a distance of 822.94 feet; thence on a bearing of West a distance of 123.21 feet; thence on a tangential curve to the left having a radius of 378.40 feet and a central angle of 10 degrees 01 minutes 02 seconds an arc distance of 66.16 feet to an intersection with the West line of the Southeast Quarter of the Northwest Quarter of Section 3, Township 106, Range 14, Olmsted County, Minnesota; thence North 01 degrees 04 minutes 47 seconds West along said West line a distance of 606.95 feet to a point on said West line lying 707.21 feet southerly from the Northwest Corner of said Southeast Quarter; thence on a bearing of West a distance of 295.00 feet; thence on a bearing of North a distance of 324.00 feet; thence on a bearing of East a distance of 60.00 feet; thence North 53 degrees 45 minutes 18 seconds East a distance of 90.00 feet; thence North 89 degrees 44 minutes 03 seconds East a distance of 155.29 feet to a point on the West line of said Southeast Quarter lying 329.21 feet southerly from the Northwest corner of said Southeast Quarter and there terminating;

AND LYING EASTERLY OF THE FOLLOWING DESCRIBED LINE: Commencing at the Southwest corner of Lot 26, Block 2, FOLWELL WEST SECOND SUBDIVISION, Olmsted County, Minnesota; thence on a Minnesota Coordinate System, South Zone bearing of South 88 degrees 56 minutes 24 seconds West along the westerly extension of the South line of said Lot 26 a distance of 173.60 feet to an intersection with the West line of the Southeast Quarter of the Northwest Quarter of Section 3, Township 106, Range 14, Olmsted County, Minnesota; thence North 01 degrees 04 minutes 47 seconds West along said West line a distance of 606.95 feet to a point on said West line lying 707.21 feet southerly from the Northwest Corner of said Southeast Quarter; thence on a bearing of West a distance of 295.00 feet; thence on a bearing of North a distance of 324.00 feet; thence on a bearing of East a distance of 60.00 feet; thence North 53 degrees 45 minutes 18 seconds East a distance of 90.00 feet; thence North 89 degrees 44 minutes 03 seconds East a distance of 155.29 feet to a point on the West line of said Southeast Quarter lying 329.21 feet southerly from the Northwest corner of said Southeast Quarter and there terminating.

Have caused the same to be surveyed and platted as "FOLWELL WEST THIRD SUBDIVISION" and do hereby donate and dedicate to the public for public use forever the avenues and grant the easements as shown on this plat.

In witness whereof said METRO DEVELOPMENT CORP. has caused these presents to be signed by its proper officers and its corporate seal to be hereunto affixed this 19th day of JUNE 1978 A.D.

STATE OF MINNESOTA )  
COUNTY OF OLMSTED ) SS  
Dennis W. Weestrand, President  
Donna J. Weestrand, Secretary

The foregoing instrument was acknowledged before me this 19th day of JUNE 1978 A.D. by Dennis W. Weestrand, President and Donna J. Weestrand, Secretary of Metro Development Corp. on behalf of the corporation.

Patricia J. Stock  
NOTARY PUBLIC - MINNESOTA  
OLMSTED COUNTY  
My Commission Expires 8-21-1979

In witness whereof said OLMSTED FEDERAL SAVINGS AND LOAN ASSOCIATION has caused these presents to be signed by its proper officers and its corporate seal to be hereunto affixed this 19th day of JUNE 1978 A.D.

STATE OF MINNESOTA )  
COUNTY OF OLMSTED ) SS  
Everett D. Humke, Vice President  
Rose McKinney, Assistant Secretary

The foregoing instrument was acknowledged before me this 19th day of JUNE 1978 A.D. by Everett D. Humke, Vice President and Rose McKinney, Assistant Secretary of Olmsted Federal Savings and Loan Association on behalf of the corporation.

Carla J. Dunbar  
NOTARY PUBLIC - MINNESOTA  
OLMSTED COUNTY  
My Commission Expires Dec. 4, 1981

In witness whereof said LESLIE E. HOLTORF as trustee under agreement for Agnes T. Holtorf and others dated August 11, 1975 and as attorney in fact for Richard Holtorf, trustee under agreement for Agnes T. Holtorf and others dated August 11, 1975, has hereunto set his hand and seal this 17th day of JUNE, 1978 A.D.

STATE OF MINNESOTA )  
COUNTY OF OLMSTED ) SS  
Leslie E. Holtorf T/A  
Leslie E. Holtorf as attorney in fact for Richard Holtorf T/A

The foregoing instrument was acknowledged before me this 17th day of JUNE 1978 A.D. by Leslie E. Holtorf as trustee under agreement for Agnes T. Holtorf and others dated August 11, 1975 and as attorney in fact for Richard Holtorf, trustee under agreement for Agnes T. Holtorf and others, dated August 11, 1975.

Patricia J. Stock  
NOTARY PUBLIC - MINNESOTA  
OLMSTED COUNTY  
My Commission Expires 8-21-1979

### SURVEYOR'S CERTIFICATE:

I hereby certify that I have surveyed and platted the property described on this plat as "FOLWELL WEST THIRD SUBDIVISION", that this plat is a correct representation of the survey, that all distances are correctly shown on the plat in feet and hundredths of a foot, that all monuments have been correctly placed in the ground as shown, that the outside boundary lines are correctly designated, that there are no wet lands to be designated.

STATE OF MINNESOTA )  
COUNTY OF OLMSTED ) SS  
James H. Parker  
James H. Parker, Land Surveyor  
Minnesota Registration No. 9235

The foregoing surveyor's certificate was acknowledged before me this 17th day of JUNE 1978 A.D. by James H. Parker, land surveyor.

Patricia J. Stock  
NOTARY PUBLIC - MINNESOTA  
OLMSTED COUNTY  
My Commission Expires 8-21-1979

### COUNTY SURVEYOR

I certify that this Plat has been checked mathematically and that the Plat conforms to the applicable platting laws this 19th day of JUNE 1978 A.D.

Roger W. Brand  
Olmsted County Surveyor