

# REPLAT OF LOT 1, BLOCK 1, CAMPUSTOWN SUBDIVISION

DEDICATION:

KNOW ALL MEN BY THESE PRESENTS: that Robert N. Springer, President of Springer Realty Company, Incorporated, and The First National Bank of Minneapolis, and Elizabeth G. Lowry, owners and proprietors of the following described property situated in the City of Rochester County of Olmsted, State of Minnesota, to-wit:

Lot 1, Block 1, Campustown Subdivision, City of Rochester, Minnesota

have caused the same to be surveyed and platted as REPLAT OF LOT 1, BLOCK 1, CAMPUSTOWN SUBDIVISION, City of Rochester, Minnesota, and do hereby grant the easements as defined thereon, in witness whereof we have hereunto set our hands and seal this 12<sup>th</sup> day of May, 19 78 A.D.

SPRINGER REALTY COMPANY, INCORPORATED

Robert N. Springer  
Robert N. Springer, President

FIRST NATIONAL BANK OF MINNEAPOLIS

John Burmaster  
Elizabeth G. Lowry  
Elizabeth G. Lowry

John Burmaster  
TRUST OFFICER

State of Minnesota ss  
County of Olmsted

On this 12<sup>th</sup> day of May, 19 78 A.D. before me, a Notary Public within and for said county and state, personally appeared Robert N. Springer to me personally known, who being by me, duly sworn, did say that he is the President of Springer Realty Company, Incorporated, the corporation named in the foregoing instrument; ~~that the seal affixed to said instrument is the corporate seal of said corporation;~~ and that said instrument was signed and sealed in behalf of said corporation by authority of its Board of Directors and said Robert N. Springer acknowledges said instrument to be the free act and deed of said corporation.

Nancy J. Shaffer  
Notary Public, Olmsted County, Minnesota  
My commission expires 12/4/78

State of Minnesota ss  
County of Hennepin

On this 12<sup>th</sup> day of May, 19 78 A.D. before me, a Notary Public within and for said county and state, personally appeared P. N. Schlessman and John Burmaster to me personally known, who being by me each duly sworn, did say that they are, respectively, the Vice President and Trust Officer of the First National Bank of Minneapolis, the corporation named in the foregoing instrument; that the seal affixed to said instrument is the corporate seal of said corporation and that said instrument was signed and sealed in behalf of said corporation by authority of its Board of Directors and said P. N. Schlessman and John Burmaster acknowledge said instrument to be the free act and deed of said corporation.

Eloise M. Dahlke  
NOTARY PUBLIC - MINNESOTA  
HENNEPIN COUNTY  
My Commission Expires Mar. 20, 1982

Eloise M. Dahlke  
Notary Public, Hennepin County, Minnesota  
My commission expires

State of Minnesota ss  
County of Olmsted

On this 13<sup>th</sup> day of May, 19 78 A.D. before me, a Notary Public within and for said county and state, personally appeared Elizabeth G. Lowry, to me personally known to be the person described in and who executed the foregoing instrument and she affirms and acknowledges that she executed the same as her own free act and deed.

Colin T. Stottala  
Notary Public, Olmsted County, Minnesota  
My commission expires July 16, 1982

UTILITY EASEMENTS DEFINED

An unobstructed easement for the construction and maintenance of all necessary overhead, underground or surface, public utilities including rights to conduct drainage and trimming on said easement.

Surveyor's Certificate

State of Minnesota ss  
County of Olmsted

I do hereby certify that I have surveyed and platted the property described on this plat as REPLAT OF LOT 1, BLOCK 1, CAMPUSTOWN SUBDIVISION, City of Rochester, County of Olmsted, Minnesota, that this plat is a correct representation of said survey; that all distances are correctly shown on said plat in feet and decimals of a foot; that all monuments have been correctly placed on the ground as shown on the plat; that the outside boundary lines are correctly designated on the plat; and that there are no wet lands or public highways to be designated on said plat other than as shown thereon.

Wallace Holland Kastler  
Surveyor  
Minnesota Registration No. 6415

State of Minnesota ss  
County of Olmsted

The above Surveyor's Certificate was subscribed and sworn to before me, a Notary Public within and for said county and state on this 15<sup>th</sup> day of May, 19 78 A.D.

Nancy J. Shaffer  
Notary Public, Olmsted County, Minnesota  
My commission expires 12/4/84

State of Minnesota ss  
County of Olmsted  
City of Rochester

I, Carole Grimm, City Clerk in and for said City of Rochester, do hereby certify that on the 5<sup>th</sup> day of June, 19 78 A.D. the accompanying plat was duly approved by the Common Council of the City of Rochester. In testimony thereof I have hereunto signed my name and affixed the seal of said City of Rochester this 12 day of June, 19 78 A.D.

Carole A. Grimm  
City Clerk of City of Rochester, MN

State of Minnesota ss  
County of Olmsted

Filed for record this 19 day of June, 19 78 A.D. at 3 o'clock P. M. in Book \_\_\_\_\_ of Plats on page \_\_\_\_\_

Catherine C. Abus  
County Recorder  
Deputy

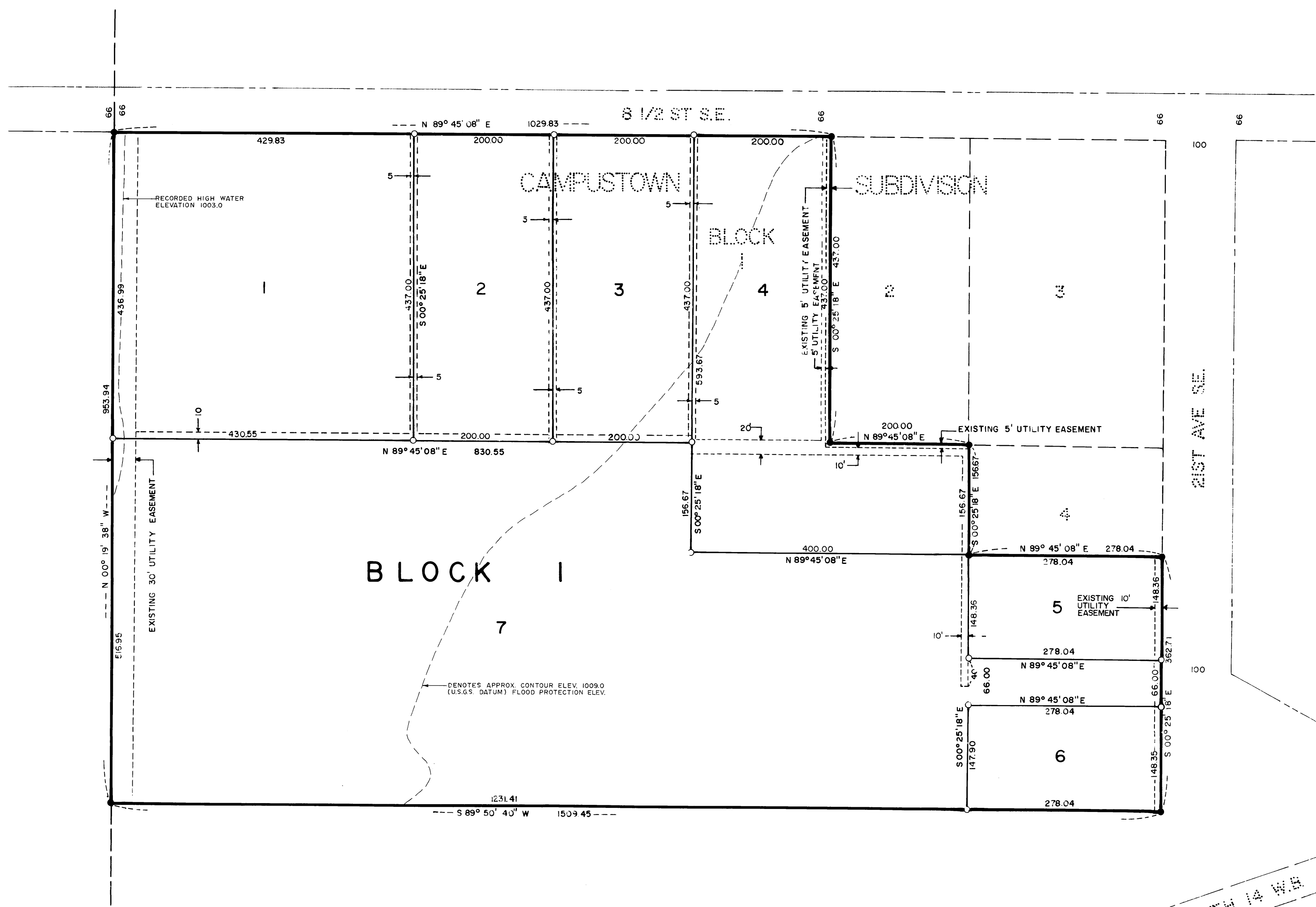
No delinquent taxes and transfer entered.

Russ Brunning  
County Auditor

I certify that this plat has been checked mathematically and that the plat conforms to the applicable platting laws.

Approved this 15<sup>th</sup> day of May, 19 78 A.D.  
By Roger W. Brand  
Olmsted County Surveyor

# REPLAT OF LOT 1, BLOCK I, CAMPUSTOWN SUBDIVISION



**N**

SCALE IN FEET  
0 50 100 150

**LEGEND**

- DENOTES MONUMENTS FOUND
- DENOTES MONUMENTS SET MARKED BY REG. NO. 6405

DRAINAGE AND UTILITY EASEMENTS ARE SHOWN THUS:

BEING 5 FEET IN WIDTH AND ADJOINING LOT LINES EXCEPT AS DIMENSIONED ON PLAT.

A portion of the accompanying plat, which lies westerly of the line denoting the approximate 1009.0 contour elevation, is within the flood fringe as defined by Part II Floodway Plan for South Fork Zumbro River and Tributaries prepared for City of Rochester and Olmsted County by the Department of Natural Resources and adopted June 7, 1976. The flood fringe is a part of a designated flood plain or flood hazard area that may be built upon with certain limitations as enforced by the City of Rochester.

Note:  
High water elevation recorded June 21, 1974, at the intersection of 13th Avenue, S.E. and Mayo Run by the Department of Public Services, City of Rochester.  
Recorded low water elevation equals flow line of channel bottom of Mayo Run.

FINAL PLAT PREPARED BY  
WALLACE HOLLAND KASTLER SCHMITZ & CO.  
CONSULTING ENGINEERS AND PLANNERS  
ROCHESTER, MINNESOTA