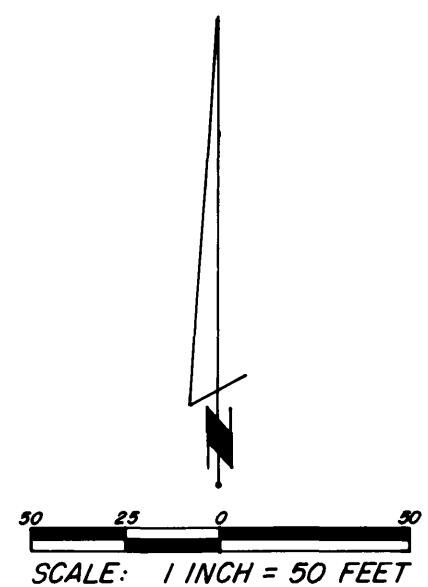


# TSP REPLAT

ROCHESTER, MINNESOTA



NOTE:  
 MONUMENTS SHOWN THUS: ●  
 ARE FOUND 1/2" PIPES.  
 UNLESS OTHERWISE NOTED.  
 THE R/W LINE OF T.H. 52 IS  
 ASSUMED N01°31'E.

I hereby certify that I have surveyed and platted the property described on this plat as TSP REPLAT; that this is a correct representation of the survey; that all distances are correctly shown on the plat; that all monuments have been correctly placed in the ground as shown; that the outside boundary lines are correctly designated on the plat; that there are no wet lands or public highways to be designated on said plat other than as shown thereon; and that said plat has been previously platted as a part of Block 4, Bielenberg and Giese Third Addition.

James E. Swanson  
 James E. Swanson, R.L.S.  
 Minnesota Registration No. 11622

State of Minnesota  
 County of Olmsted

The surveyor's certificate was subscribed and sworn to before me, a Notary Public, this 25<sup>th</sup> day of April, 1978.

Howard E. Hunt  
 Notary Public, Olmsted County, Minnesota  
 My commission expires \_\_\_\_\_

Filed for record this 5<sup>th</sup> day of June, 1978 at 4 o'clock P. m. in book \_\_\_\_\_ of plats, on page \_\_\_\_\_, as instrument number \_\_\_\_\_.

Luc Jonstun  
 County Recorder, Olmsted County, Minnesota

County Surveyor

I certify that this plat has been checked mathematically and that the plat conforms to the applicable platting laws, this 25<sup>th</sup> day of April, 1978 A.D.

Robert W. Brand  
 Olmsted County Surveyor

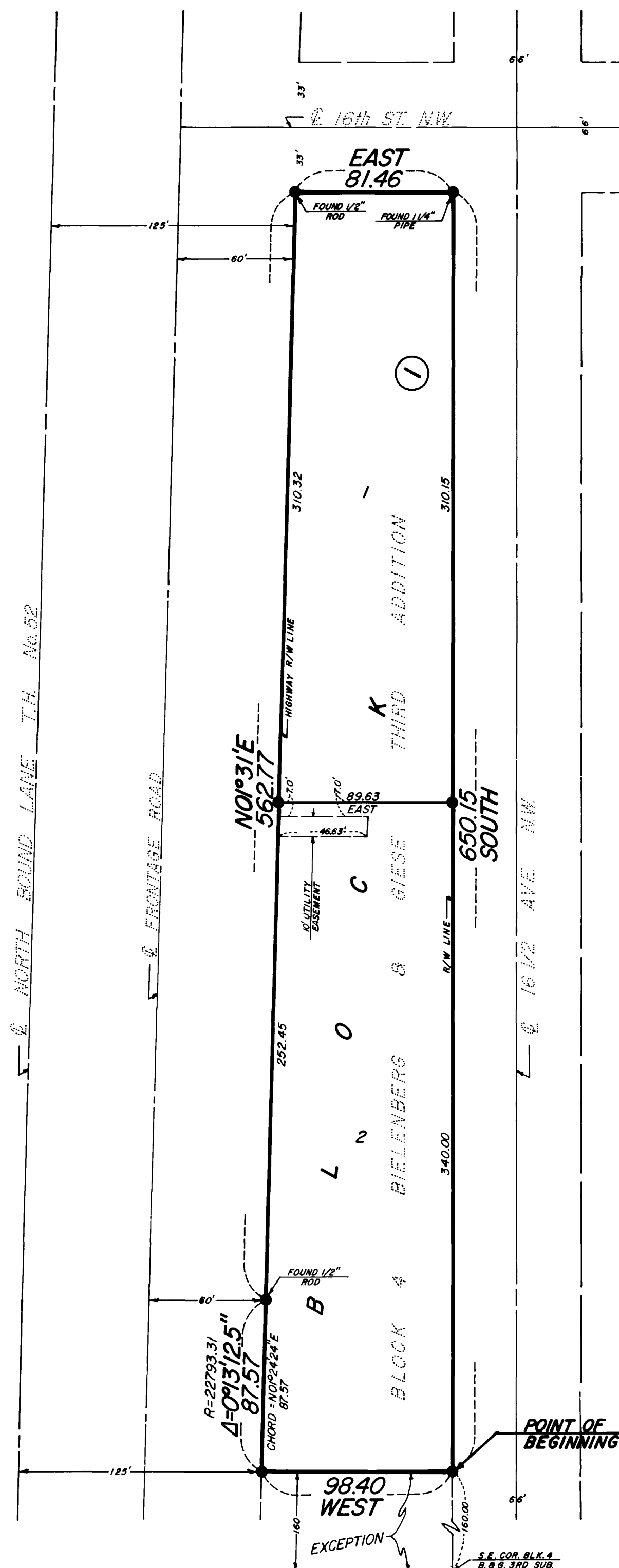
State of Minnesota  
 County of Olmsted  
 City of Rochester

I, Carol A. Grimm, City Clerk in and for the City of Rochester, do hereby certify that on the 15 day of May, 1978 A.D., the accompanying plat was duly approved by the Common Council of the City of Rochester. In testimony thereof I have here unto signed my name and affixed the seal of said City of Rochester this 16<sup>th</sup> day of May, 1978 A.D.

Carol A. Grimm  
 City Clerk, City of Rochester

No delinquent taxes due and transfer entered this 5<sup>th</sup> day of June, 1978.

Road Drawing by David Nelson, Deputy  
 County Auditor



Owner's Dedication:

KNOW ALL MEN BY THESE PRESENTS: that 1530 Associates, a general partnership, and 1500 TSP Associates, a partnership, owners and proprietors, and National Bank of South Dakota, mortgagee of the following described property situated in the City of Rochester, State of Minnesota, to wit:

A part of the Southeast Quarter of Section 27, Township 107 North, Range 14 West described as follows:

All that part of Block 4, Bielenberg and Giese Third Addition lying easterly of the easterly right of way line of Trunk Highway No. 52 except the south 160.00 feet thereof.

Containing 1.34 acres.

Have caused the same to be surveyed and platted as TSP REPLAT and do hereby grant the easements as shown on this plat. In witness whereof said 1530 Associates, a partnership has caused these presents to be signed by a partner this 24<sup>th</sup> day of April, 1978. In witness whereof said 1500 TSP Associates, a partnership, has caused these presents to be signed by a partner this 24<sup>th</sup> day of April, 1978. In witness whereof said National Bank of South Dakota, mortgagee, has caused these presents to be signed by its proper officers and its corporate seal to be hereunto affixed this 24<sup>th</sup> day of April, 1978.

1530 Associates, a partnership

Roger Toulouse  
 Roger Toulouse, Partner

1500 TSP Associates, a partnership

Roger Toulouse  
 Roger Toulouse, Partner

National Bank of South Dakota

Alton Hill  
 Alton Hill, Vice President

State of Minnesota  
 County of Olmsted

The foregoing Instrument was acknowledged before me this 24<sup>th</sup> day of April, 1978 by Roger Toulouse, partner, on behalf of 1530 Associates, a partnership.

Rosemary A. Schommer  
 Notary Public, Olmsted County, Minnesota

My commission expires January 2, 1983

State of Minnesota  
 County of Olmsted

The foregoing Instrument was acknowledged before me this 24<sup>th</sup> day of April, 1978 by Roger Toulouse, partner, on behalf of 1500 TSP Associates, a partnership.

Rosemary A. Schommer  
 Notary Public, Olmsted County, Minnesota

My commission expires January 2, 1983

State of Minnesota  
 County of Olmsted

The foregoing Instrument was acknowledged before me this 24<sup>th</sup> day of April, 1978 by James J. Murphy its Vice President and Alan H. Wachenberg its Vice President officers of National Bank of South Dakota on behalf of the corporation.

Rosemary A. Schommer  
 Notary Public, Olmsted County, Minnesota

My commission expires January 2, 1983

OFFICIAL PLAT

Utility Easement Defined:

An unobstructed easement for the construction and maintenance of all necessary overhead, underground, or surface public utilities including rights to conduct drainage and trimming on said easement.

PREPARED BY:  
 MCGHIE & BETTS, INC.  
 CONSULTING ENGINEER'S  
 ROCHESTER, MINNESOTA