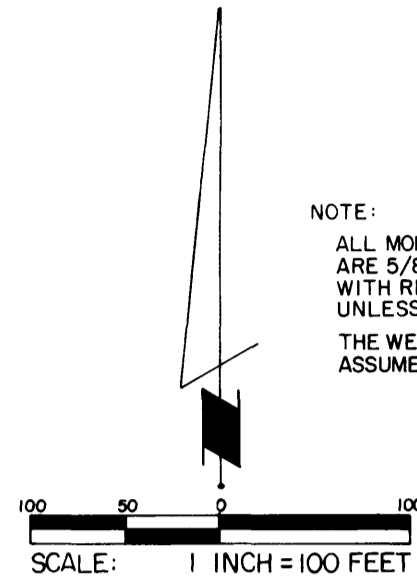


# REPLAT OF A PART OF OUTLOT "A" MEADOW PARK FIFTH SUBDIVISION

ROCHESTER, MINNESOTA



I hereby certify that I have surveyed and platted the property described on this plat as REPLAT OF A PART OF OUTLOT "A" MEADOW PARK FIFTH SUBDIVISION; that this is a correct representation of the survey; that all distances are correctly shown on the plat; that all monuments have been correctly placed in the ground as shown; that the outside boundary lines are correctly designated on the plat; that there are no wet lands or public highways to be designated on said plat other than as shown thereon; and that said plat has been previously platted as a part of Outlot "A" of Meadow Park Fifth Subdivision.

*James E. Swanson*  
James E. Swanson, R.L.S.  
Minnesota Registration No. 11622

State of Minnesota  
County of Olmsted

The surveyor's certificate was subscribed and sworn to before me, a Notary Public, this 20<sup>th</sup> day of April, 1978.

*Howard E. Hunt*  
Notary Public, Olmsted County, Minnesota  
Howard E. Hunt  
Notary Public, Olmsted County, Minn.  
My Commission Expires Dec. 9, 1978

My commission expires \_\_\_\_\_

Filed for record this 31<sup>st</sup> day of May, 1978 at 10 o'clock A. m. in book \_\_\_\_\_ of plat, on page \_\_\_\_\_, as Instrument number 29520.

*David Finstuen*  
Olmsted County, Minnesota  
Registrar of Titles  
Assistant County Surveyor

I certify that this plat has been checked mathematically and that the plat conforms to the applicable platting laws, this 20<sup>th</sup> day of April, 1978 A.D.

*Roger W. Brand*  
Olmsted County Surveyor

State of Minnesota  
County of Olmsted  
City of Rochester

I, Carol A. Grimm, City Clerk in and for the City of Rochester, do hereby certify that on the 19 day of May, 1978 A.D., the accompanying plat was duly approved by the Common Council of the City of Rochester. In testimony thereof I have hereunto signed my name and affixed the seal of said City of Rochester this 22 day of May, 1978 A.D.

*Carol A. Grimm*  
City Clerk

No delinquent taxes due and transfer entered this 9<sup>th</sup> day of May, 1978

*Bess Brunning*  
County Auditor  
Melius Nelson, Deputy

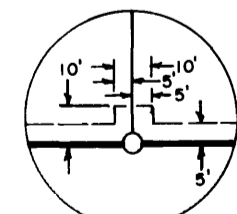
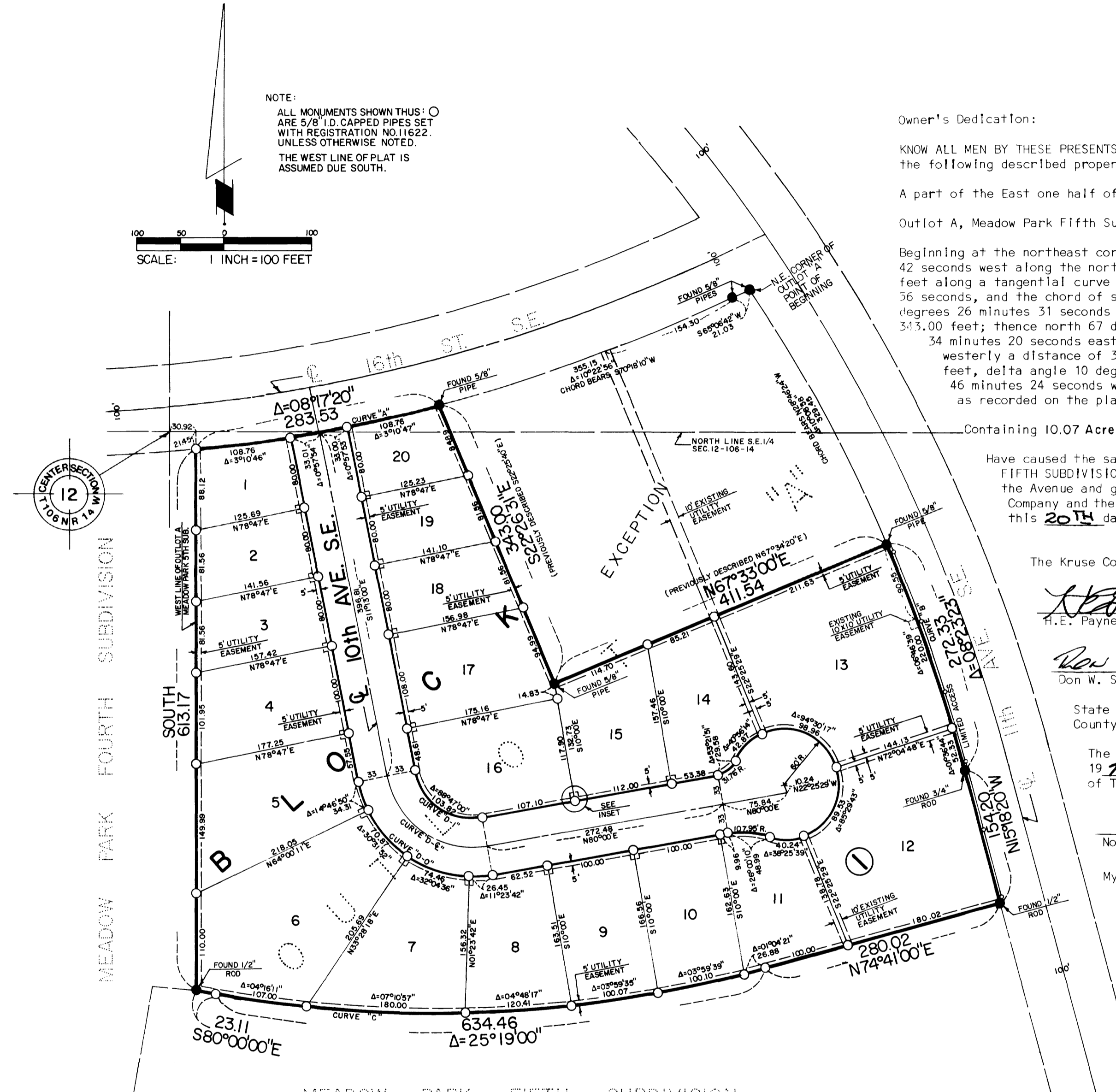
The entire subdivision as shown on the accompanying plat, lies wholly within the flood fringe as defined by the City of Rochester, zoning code. The flood fringe is a part of a designated flood plain or flood hazard area that may be built upon with certain limitations as enforced by the City of Rochester.

B.M. elevation 1020.75 top brass disc bridge over Willow Creek, S.E. corner bridge 11th Avenue S.E.

Recorded high water elevation = 1006.5 at 12th Street S.E. and 11th Avenue S.E.

Recorded low water elevation = 993.5 at Bear Creek and Beltline Bridge.

High and low water elevations provided by Department of Public Services, Rochester, Minnesota.



CURVE	Δ	R	L	T
"A"	08°17'20"	1,959.86	283.53	142.01
"B"	08°23'23"	1,859.86	272.33	136.41
"C"	25°19'	1,435.86	634.45	322.49
"D-1"	88°47'	67.00	103.82	65.59
"D-2"	88°47'	100.00	154.96	97.90
"D-0"	88°47'	133.00	206.09	130.21

Limited Access Defined:

Egress and ingress by vehicular travel will not be permitted over and across the right-of-way lines of 11th Avenue S.E., as shown on said plat.

Utility Easement Defined:

An unobstructed easement for the construction and maintenance of all necessary overhead, underground, or surface public utilities including rights to conduct drainage and trimming on said easement.

Owner's Dedication:

KNOW ALL MEN BY THESE PRESENTS: That the Kruse Company and the Mayo Foundation, owners and proprietors of the following described property situated in the City of Rochester, State of Minnesota, to wit:

A part of the East one half of Section 12, Township 106 North, Range 14 West, described as follows:

Outlot A, Meadow Park Fifth Subdivision, Rochester, Minnesota, except the following described tract of land:

Beginning at the northeast corner of said Outlot A; thence on an assumed bearing of south 65 degrees 06 minutes 42 seconds west along the north line of said Outlot A, 21.03 feet; thence southwesterly a distance of 355.15 feet along a tangential curve concave northwesterly, radius 1959.86 feet, delta angle 10 degrees 22 minutes 36 seconds, and the chord of said curve bears south 70 degrees 18 minutes 10 seconds west; thence south 22 degrees 26 minutes 31 seconds east, (previously described as south 22 degrees 25 minutes 40 seconds east), 343.00 feet; thence north 67 degrees 33 minutes 00 seconds east, (previously described as north 67 degrees 34 minutes 20 seconds east), 411.54 feet to a point on the east line of said Outlot A; thence northwesterly a distance of 329.45 feet along a non-tangential curve concave southwesterly, radius 1859.86 feet, delta angle 10 degrees 08 minutes 58 seconds and the chord of said curve bears north 28 degrees 46 minutes 24 seconds west, to the point of beginning. Being subject to a 10 foot utility easement as recorded on the plat of Meadow Park Fifth Subdivision.

Containing 10.07 Acres.

Have caused the same to be surveyed and platted as REPLAT OF A PART OF OUTLOT "A" MEADOW PARK FIFTH SUBDIVISION, and do hereby donate and dedicate to the public, for the public use forever, the Avenue and grant the easements as shown on this plat. In witness whereof said The Kruse Company and the Mayo Foundation have caused these presents to be signed by its proper officers this 20<sup>th</sup> day of April, 1978.

The Kruse Company

*H.E. Payne*  
H.E. Payne, Chairman

*Don W. Sperry*  
Don W. Sperry, Vice President

State of Minnesota  
County of Olmsted

The foregoing instrument was acknowledged before me this 20<sup>th</sup> day of April, 1978, by H.E. Payne its Chairman and Don W. Sperry its Vice President officers of The Kruse Company on behalf of the corporation.

*John Spile*  
Notary Public, Olmsted County, Minnesota

My commission expires Jan. 22, 1982

The Mayo Foundation

*Gregg Orwell*  
Gregg Orwell, Secretary

*Richard W. Hill*  
Richard W. Hill, Vice Chairman

State of Minnesota  
County of Olmsted

The foregoing instrument was acknowledged before me this 21 day of April, 1978, by Gregg Orwell its Secretary and Richard W. Hill its Vice Chairman officers of The Mayo Foundation on behalf of the corporation.

*Dorothy S. Young*  
Notary Public, Olmsted County, Minnesota

My commission expires April 6, 1983

OFFICIAL PLAT

PREPARED BY:  
McGHEE & BETTS, INC.  
CONSULTING ENGINEERS  
ROCHESTER, MINNESOTA