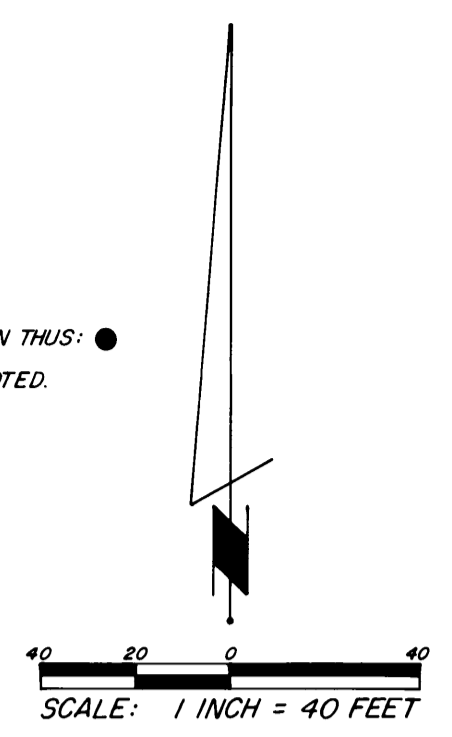


PARKIT REPLAT

ROCHESTER, MINNESOTA

NOTE:
ALL MONUMENTS, SHOWN THUS: ●
ARE FOUND 5/8" PIPES.
UNLESS OTHERWISE NOTED.



I hereby certify that I have surveyed and platted the property described on this plat as PARKIT REPLAT; that this is a correct representation of the survey; that all distances are correctly shown on the plat; that all monuments have been correctly placed in the ground as shown; that the outside boundary lines are correctly designated on the plat; that there are no wet lands or public highways to be designated on said plat other than as shown thereon; and that said plat has been previously platted as a part of Block 46, Rochester Original Town.

James E. Swanson
James E. Swanson, R.L.S.
Minnesota Registration No. 11622

State of Minnesota
County of Olmsted

The surveyor's certificate was subscribed and sworn to before me, a Notary Public, this 24th day of March, 1978.

Howard E. Hunt
Notary Public, Olmsted County, Minnesota
HOWARD E. HUNT

My commission expires My Commission Expires Dec. 9, 1978 400697

Filed for record this 9 day of May, 1978 at 10:14 o'clock A.m. in book _____ of plats, on page _____, as instrument number _____.

Leis Finstuen
County Recorder, Olmsted County, Minnesota

No delinquent taxes due and transfer entered this 9th day of May, 1978.

Rosal Branning by Nelson Nelson, Deputy
County Auditor

County Surveyor

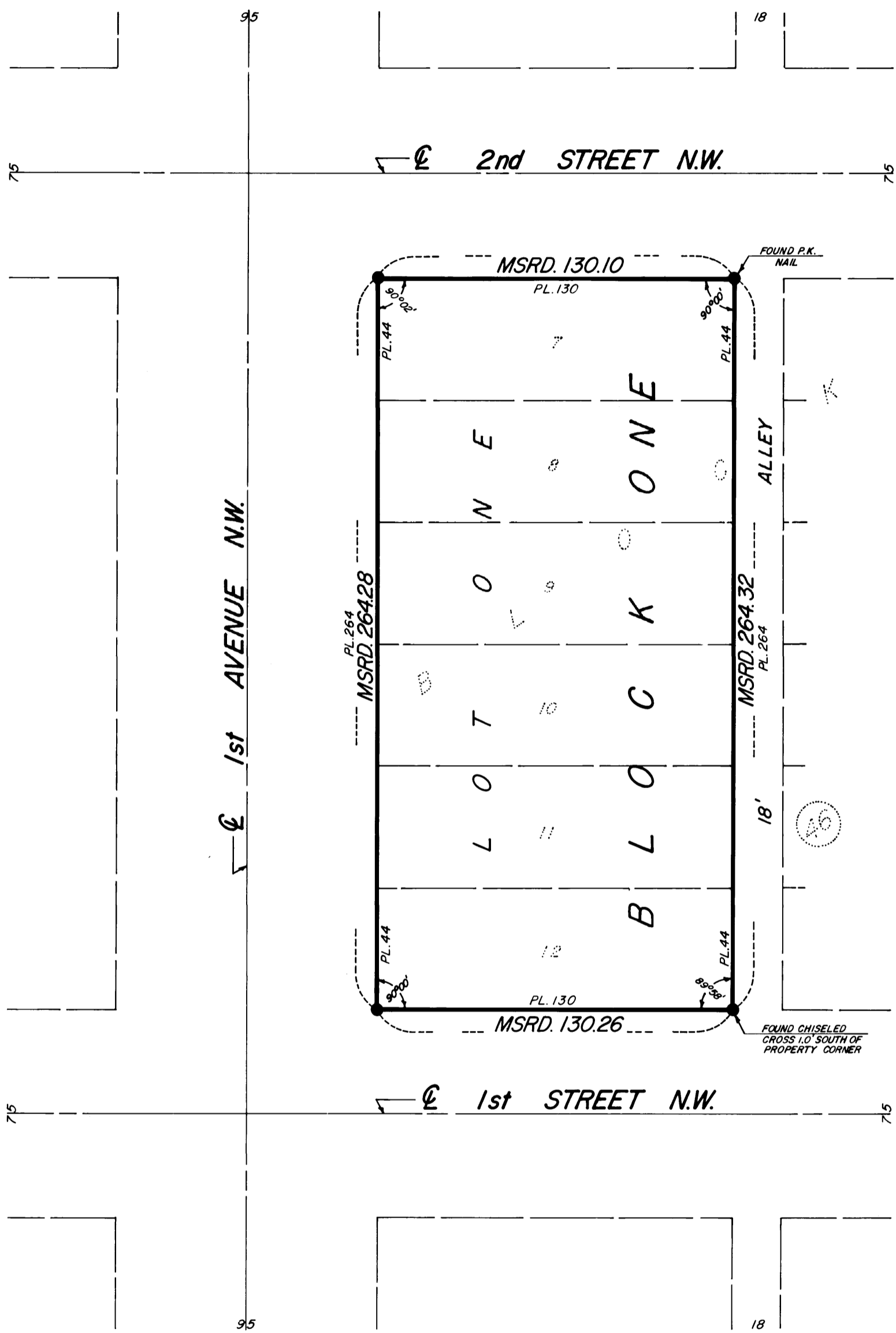
I certify that this plat has been checked mathematically and that the plat conforms to the applicable platting laws, this 27th day of March, 1978 A.D.

Robert W. Brand
Olmsted County Surveyor

State of Minnesota
County of Olmsted
City of Rochester

I, Carole A. Grimm, City Clerk in and for the City of Rochester, do hereby certify that on the 1st day of May, 1978 A.D., the accompanying plat was duly approved by the Common Council of the City of Rochester. In testimony thereof I have hereunto signed my name and affixed the seal of said City of Rochester this 2nd day of May, 1978 A.D.

Carole A. Grimm
City Clerk, City of Rochester



Owner's Dedication:

KNOW ALL MEN BY THESE PRESENTS: that Rochester Methodist Hospital, a Minnesota Corporation, owner and proprietor, and First National Bank of Rochester, a Minnesota Corporation, mortgagee of the following described property situated in the City of Rochester, State of Minnesota, to wit:

A part of the Southeast Quarter of Section 35, Township 107 North, Range 14 West, Rochester, Minnesota, described as follows:

Lots 7 - 12, Block 46, Rochester Original Town.

Have caused the same to be surveyed and platted as PARKIT REPLAT. In witness whereof said Rochester Methodist Hospital has caused these presents to be signed by its proper officers and its corporate seal to be hereunto affixed this 30th day of March, 1978. In witness whereof said First National Bank of Rochester has caused these presents to be signed by its proper officers and its corporate seal to be hereunto affixed this _____ day of _____, 19____.

Rochester Methodist Hospital

Chester H. Huggett
Chester Huggett, Secretary

Richard J. Smith
Richard J. Smith, Treasurer

~~First National Bank of Rochester~~

~~Kathy Betz, Real Estate Loan Officer~~

~~R. Alan Lichty, Ass't. Vice President~~

State of Minnesota
County of Olmsted

The foregoing instrument was acknowledged before me this 30th day of MARCH, 1978, by Chester Huggett its secretary and Richard J. Smith its treasurer, officers of Rochester Methodist Hospital on behalf of the corporation.

Ronald J. Digne
Notary Public, Olmsted County, Minnesota

My commission expires _____

~~State of Minnesota
County of Olmsted~~

~~The foregoing instrument was acknowledged before me this _____ day of _____, 19____, by Kathy Betz its Real Estate Loan Officer and R. Alan Lichty, its Ass't. Vice President officers of First National Bank of Rochester~~

~~Notary Public, Olmsted County, Minnesota~~

~~My commission expires _____~~

OFFICIAL PLAT