

6

# INNSBRUCK ONE

## ROCHESTER, MINNESOTA

I hereby certify that I have surveyed and platted the property described on this plat as INNSBRUCK ONE; that this is a correct representation of the survey; that all distances are correctly shown on the plat; that all monuments have been correctly placed in the ground as shown; that the outside boundary lines are correctly designated on the plat; and that there are no wet lands or public high-ways to be designated on said plat other than as shown thereon.

*James E. Swanson*  
James E. Swanson, R.L.S.  
Minnesota registration no. 11622

State of Minnesota  
County of Olmsted

The surveyor's certificate was subscribed and sworn to before me, a Notary Public, this 20<sup>th</sup> day of February, 1978.

*Howard E. Hunt*  
Notary Public, Olmsted County, Minnesota  
My Commission Expires Dec. 9, 1978

Filed for record this 9<sup>th</sup> day of March, 1978 at 1 o'clock P.m. in book \_\_\_\_\_ of plats, on page \_\_\_\_\_, as instrument number \_\_\_\_\_.

*Lawrence J. Finsterer*  
County Recorder, Olmsted County, Minnesota

I certify that this plat has been checked mathematically and that the plat conforms to the applicable platting laws, this 21<sup>st</sup> day of Feb., 1978 A.D.

*Robert W. Brand*  
Olmsted County Surveyor

State of Minnesota  
County of Olmsted  
City of Rochester

I, Carole A. Grimm, City Clerk in and for the City of Rochester, do hereby certify that on the 6<sup>th</sup> day of March, 1978, the accompanying plat was duly approved by the Common Council of the City of Rochester. In testimony whereof I have here unto signed my name and affixed the seal of said City of Rochester this 7<sup>th</sup> day of March, 1978 A.D.

*Carole A. Grimm*  
City Clerk, City of Rochester

No delinquent taxes due and transfer entered this 9<sup>th</sup> day of March, 1978.

*Robert Swanson*  
County Auditor  
*Malcolm Nelson, Deputy*

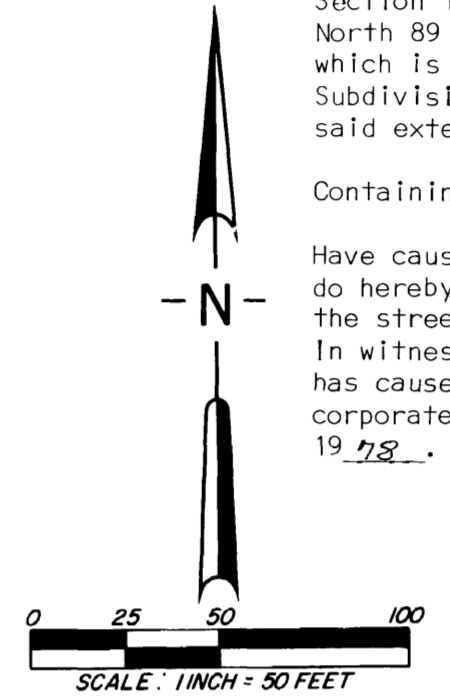
Owner's Dedication:  
KNOW ALL MEN BY THESE PRESENTS: that Builders Land Company, a Minnesota Corporation, owner and proprietor of the following described property situated in the City of Rochester, State of Minnesota to wit:

A part of the West 5/8 of the East half of Section 15, Township 107 North, Range 14 West, Rochester, Minnesota, described as follows:

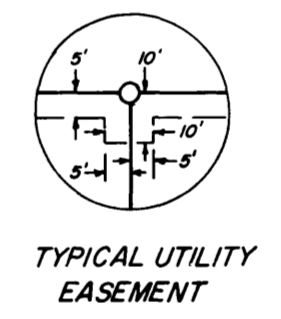
Commencing at the Southwest corner of the Southeast Quarter of said Section 15; thence North 00 degrees 02 minutes 00 seconds East, assumed bearing, along the West line of said Southeast Quarter, 590.00 feet to the Northwest corner of Candlewood Subdivision; thence South 89 degrees 31 minutes 15 seconds East along the North line of said subdivision, 1114.18 feet (previously described 1114.00 feet) to the Northeast corner thereof for a point of beginning; thence South 89 degrees 34 minutes 00 seconds East along the North line of Sunrise Estates Third Subdivision, 534.89 feet to the East line of the West 5/8 of the East half of said Section 15; thence due North along said East line, 605.00 feet; thence North 89 degrees 34 minutes 00 seconds West, 534.54 feet to a point which is on the Northerly extension of the East line of Candlewood Subdivision; thence South 00 degrees 02 minutes 00 seconds West along said extension, 605.00 feet to the point of beginning.

Containing 7.43 acres.  
Have caused the same to be surveyed and platted as INNSBRUCK ONE and do hereby donate and dedicate to the public, for the public use forever the streets and avenues and grant the easements as shown on this plat. In witness whereof said Builders Land Company, a Minnesota Corporation has caused these presents to be signed by its proper officers and its corporate seal to be hereunto affixed this 15<sup>th</sup> day of February, 1978.

Builders Land Company  
*E. Patrick Dargis*  
E. Patrick Dargis, President  
*Robert J. Simonsen*  
Robert J. Simonsen, Secretary



NOTE:  
MONUMENTS SHOWN THIS: ○ ARE 5/8" I.D. CAPPED PIPES SET WITH REGISTRATION NO. 6980 UNLESS OTHERWISE NOTED. THE WEST LINE OF THE NORTHEAST QUARTER IS ASSUMED TO BE N 00° 02' 00" E.  
MONUMENTS SHOWN THIS: ● ARE FOUND 5/8" PIPES UNLESS OTHERWISE NOTED.



State of Minnesota  
County of Hennepin  
The foregoing instrument was acknowledged before me this 15<sup>th</sup> day of February, 1978, by E. Patrick Dargis, its President and Robert J. Simonsen, its Secretary, officers of Builders Land Company on behalf of the corporation.

*Synthia R. Blotard*  
Notary Public Hennepin County, Minnesota  
My Commission expires \_\_\_\_\_

Utility easement defined:  
An unobstructed easement for the construction and maintenance of all overhead, underground, or surface public utilities including rights to conduct drainage and trimming on said easement.

### OFFICIAL PLAT

PREPARED BY:  
McGHEE & BETTS, INC.  
CONSULTING ENGINEERS  
ROCHESTER, MINNESOTA

