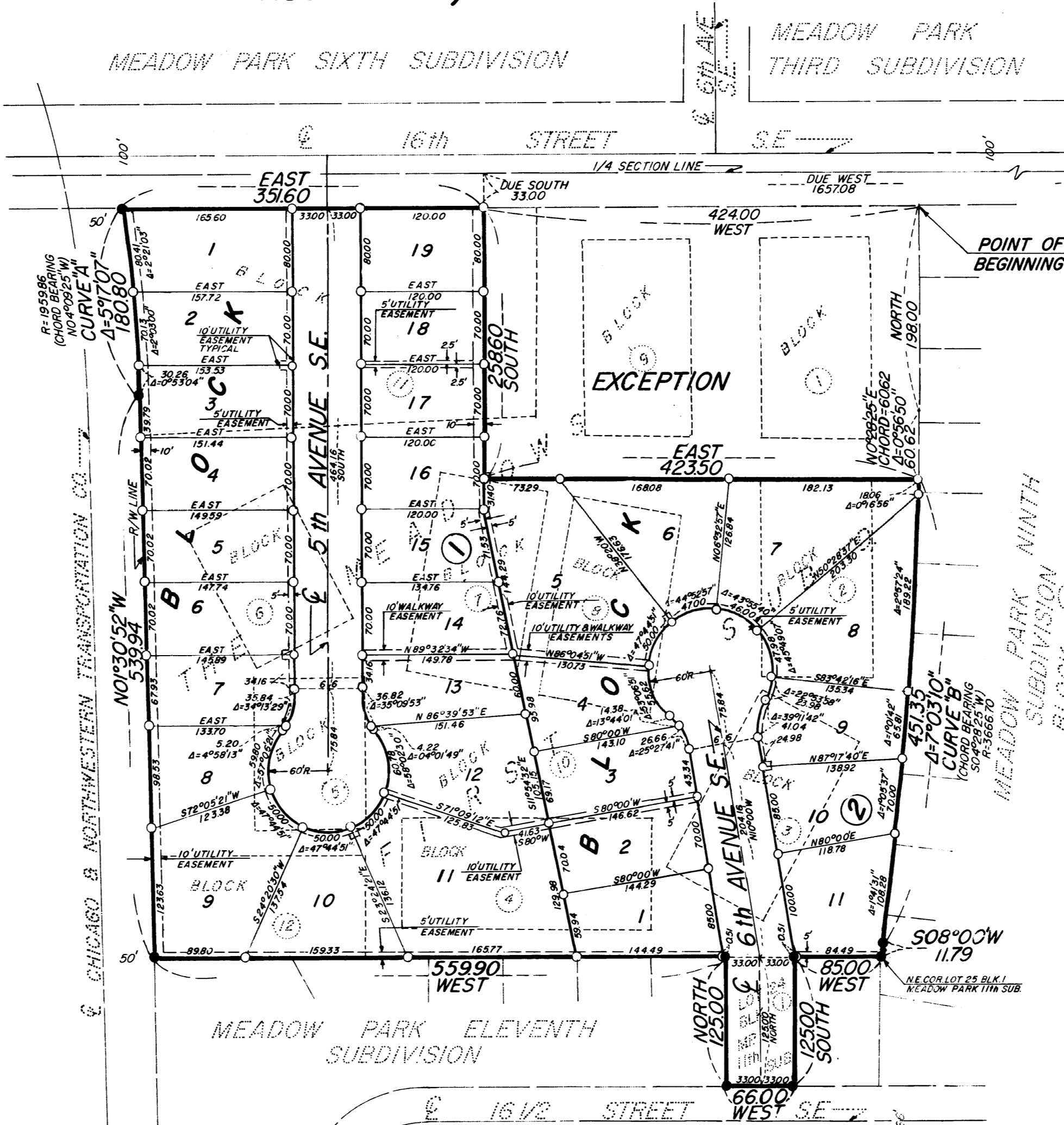


THE MEADOWS RE-SUBDIVISION

ROCHESTER, MINNESOTA

NOTE:
MONUMENTS SHOWN THUS ○
ARE 5/8" I.D. CAPPED PIPES SET
WITH REGISTRATION NO. 6980.
MONUMENTS SHOWN THUS ●
ARE FOUND 1/2" IRON PIPES
ALL BEARING ASSUMED.

SCALE: 1 INCH=100 FEET



SURVEYOR'S CERTIFICATE

STATE OF MINNESOTA) S.S.
COUNTY OF OLMSTED)

I DO HEREBY CERTIFY THAT I HAVE SURVEYED AND PLATTED THE PROPERTY DESCRIBED ON THIS PLAT AS "THE MEADOWS RE-SUBDIVISION"; THAT THIS IS A CORRECT REPRESENTATION OF SAID SURVEY; THAT ALL DISTANCES ARE CORRECTLY SHOWN ON SAID PLAT IN FEET AND DECIMALS OF A FOOT; THAT ALL MONUMENTS HAVE BEEN CORRECTLY PLACED IN THE GROUND AS SHOWN ON THE PLAT; THAT THE OUTSIDE BOUNDARY LINES ARE CORRECTLY DESIGNATED ON THE PLAT; THAT THERE ARE NO WET LANDS; AND THAT SAID PLAT HAS BEEN PREVIOUSLY PLATTED AS THE MEADOWS FIRST SUBDIVISION, AND LOT 24, BLOCK 1 MEADOW PARK ELEVENTH SUBDIVISION.

Douglas N. Betts
DOUGLAS N. BETTS, P.E. & R.L.S.
MINNESOTA REGISTRATION NO. 6980

STATE OF MINNESOTA) S.S.
COUNTY OF OLMSTED)

THE ABOVE SURVEYOR'S CERTIFICATE WAS SUBSCRIBED AND SWORN TO BEFORE ME, A NOTARY PUBLIC WITHIN AND FOR SAID COUNTY AND STATE ON THIS 3rd DAY OF March 1977 A.D.

Howard E. Hunt
NOTARY PUBLIC, OLMSTED COUNTY, MINNESOTA

MY COMMISSION EXPIRES 19 A.D.

COUNTY SURVEYOR'S CERTIFICATE OF APPROVAL

I CERTIFY THAT THIS PLAT HAS BEEN CHECKED MATHEMATICALLY AND THAT THE PLAT CONFORMS TO THE APPLICABLE PLATTING LAWS:

APPROVED THIS 3rd DAY OF March 1977 A.D.

BY *Reginald Brand*
OLMSTED COUNTY SURVEYOR

STATE OF MINNESOTA) S.S.
COUNTY OF OLMSTED)

I, CAROLE A. GRIMM, CITY CLERK IN AND FOR THE CITY OF ROCHESTER, DO HEREBY CERTIFY THAT ON THE 4th DAY OF April 1977 A.D., THE ANNEXED PLAT WAS DULY APPROVED BY THE COMMON COUNCIL OF THE CITY OF ROCHESTER. IN TESTIMONY THEREOF, I HAVE HEREUNTO SIGNED MY NAME AND AFFIXED THE SEAL OF SAID CITY OF ROCHESTER THIS 5th DAY OF April 1977 A.D.

Carole A. Grimm
CITY CLERK

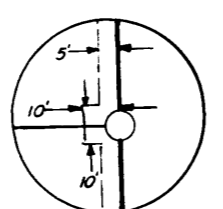
NO DELINQUENT TAXES DUE AND TRANSFER ENTERED THIS 10th DAY OF August 1977 A.D.

Paul Branning
COUNTY AUDITOR

STATE OF MINNESOTA) S.S.
COUNTY OF OLMSTED)

FILED FOR RECORD THIS 10th DAY OF August 1977 A.D. AT 3 O'CLOCK P. M. IN BOOK OF PLATS ON PAGE OF
INSTRUMENT NO. 27602

Said Feinstein, Registrar of Titles
James C. Souders, Deputy



TYPICAL UTILITY EASEMENT

CURVE DATA				
CURVE	Δ	T	L	R
A	5°17'07"	90.50	180.80	1959.86
B	7°03'10"	225.96	451.35	3666.70

KNOW ALL MEN BY THESE PRESENTS:

THAT THE KRUSE COMPANY, OWNER AND PROPRIETOR OF THE FOLLOWING DESCRIBED PROPERTY SITUATED IN THE CITY OF ROCHESTER, STATE OF MINNESOTA TO WIT:

THE MEADOWS FIRST SUBDIVISION, ROCHESTER, MINNESOTA, EXCEPT THAT PART DESCRIBED BY METES AND BOUNDS AS FOLLOWS:

BEGINNING AT THE NORTHEAST CORNER OF SAID SUBDIVISION; THENCE DUE WEST, ASSUMED BEARING, ALONG THE NORTH LINE OF SAID SUBDIVISION, 424.00 FEET; THENCE DUE SOUTH, 258.60 FEET; THENCE DUE EAST, 423.50 FEET TO THE WESTERLY LINE OF BLOCK 1, MEADOW PARK NINTH SUBDIVISION; THENCE NORTHERLY 60.32 FEET ALONG A NONTANGENTIAL CURVE CONCAVE TO THE WEST, DELTA ANGLE 00 DEGREES 56 MINUTES 50 SECONDS, RADIUS 3666.70 FEET, AND THE CHORD OF SAID CURVE BEARS NORTH 00 DEGREES 28 MINUTES 25 SECONDS EAST, 60.62 FEET; THENCE DUE NORTH, TANGENT TO SAID CURVE, 198.00 FEET TO THE POINT OF BEGINNING.

ALSO:

LOT 24, BLOCK 1, MEADOW PARK ELEVENTH SUBDIVISION, ROCHESTER, MINNESOTA.

CONTAINING 10.06 ACRES.

HAVE CAUSED THE SAME TO BE SURVEYED AND PLATTED AS "THE MEADOWS RE-SUBDIVISION", AND DO HEREBY DONATE AND DEDICATE TO THE PUBLIC USE FOREVER THE AVENUES SHOWN THEREON AND GRANT THE EASEMENTS DEFINED THEREON IN WITNESS WHEREOF WE HEREUNTO SET OUR HANDS THIS 10th DAY OF MARCH 1977 A.D.

THE KRUSE COMPANY

H.E. Payne
H.E. PAYNE, CHAIRMAN

H.W. Hodge
H.W. HODGE, PRESIDENT

STATE OF MINNESOTA) S.S.
COUNTY OF OLMSTED)

ON THIS 10th DAY OF March 1977 A.D., BEFORE ME A NOTARY PUBLIC IN AND FOR SAID COUNTY, PERSONALLY APPEARED H.E. PAYNE AND H.W. HODGE, TO ME PERSONALLY KNOWN, BEING EACH BY ME DULY SWORN, DID SAY THEY ARE CHAIRMAN AND PRESIDENT OF THE KRUSE COMPANY, AND THAT SAID INSTRUMENT IS SIGNED AND SEALED IN ITS BEHALF BY AUTHORITY OF ITS MEMBERS, AND THAT SAID H.E. PAYNE AND H.W. HODGE ACKNOWLEDGE SAID INSTRUMENT TO BE THE FREE ACT AND DEED OF SAID CORPORATION.

John Siple
NOTARY PUBLIC, OLMSTED COUNTY, MINNESOTA

MY COMMISSION EXPIRES 19 A.D.

OFFICIAL PLAT

PREPARED BY:
McGHEE BETTS INC.
CONSULTING ENGINEERS
ROCHESTER, MINN.