

# NOLTING SUBDIVISION

### Surveyor's Certificate

I hereby certify that I have surveyed and platted the property described on this plat as NOLTING SUBDIVISION; that this plat is a correct representation of the survey; that all distances are correctly shown on the plat in feet and hundredths of a foot; that all monuments have been correctly placed in the ground as shown; that the outside boundary lines are correctly designated on the plat; and that there are no wet lands as defined in MS 505.02, Subd. 1, or public highways to be designated other than as shown.

James E. Swanson  
James E. Swanson, R.L.S.  
Minnesota Registration Number 11622

State of Minnesota  
County of Olmsted

The surveyor's certificate was subscribed and sworn to before me, a Notary Public, this 14th day of August, 1993.

Lily J. Bartz  
Notary Public, Olmsted County, Minnesota

My commission expires: 

### County Surveyor

I certify that this plat has been checked mathematically and that the plat conforms to the applicable laws, this 9th day of August, 1993.

Edward P. Kusile  
Olmsted County Surveyor

### Tax Statements

Taxes payable in the year 1993 on the land herein described have been paid, there are no delinquent taxes and transfer has been entered this 23rd day of August, 1993.

Bob Ryan  
Olmsted County Auditor/Treasurer

By Tom Cocker Deputy

### City Approval

State of Minnesota  
County of Olmsted  
City of Byron

We do hereby certify that on the 14th day of July, 1993, the accompanying plat was duly approved by the Common Council of the City of Byron. In testimony thereof I have hereunto signed our name and affixed the seal of said City of Byron this 14th day of August, 1993.

Tom Cocker  
Mayor

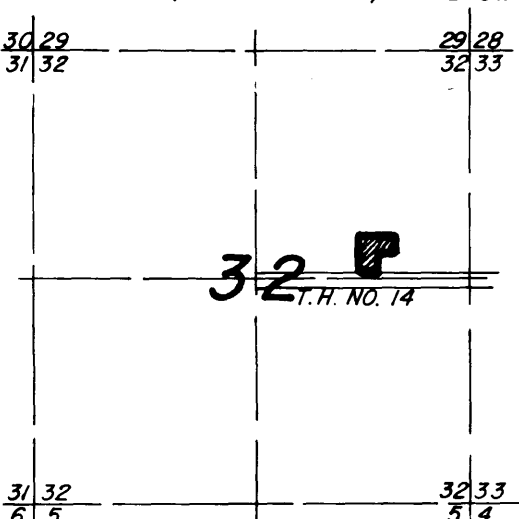
Mike Bell  
City Clerk

### City Planning Commission

Approved by the Planning Commission of the City of Byron, Minnesota, at a regular meeting thereof, on the 11th day of August, 1993.

Sheila M. Bennett  
Commission Chairman

### PROPERTY LOCATION MAP



County Recorder

662603

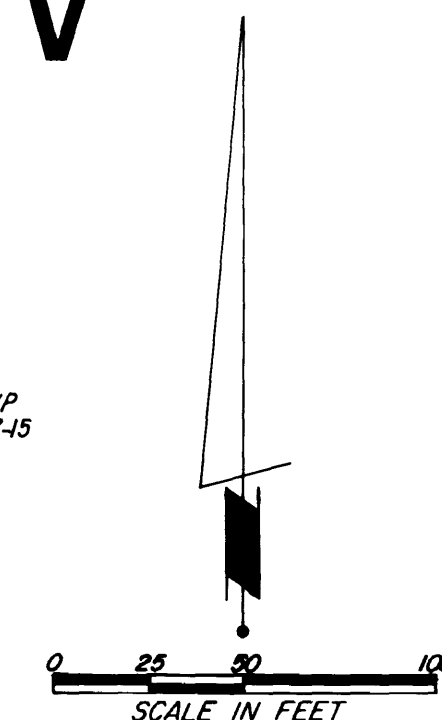
DOCUMENT NUMBER

I hereby certify that this instrument was filed in the office of the County Recorder for record on this 23 day of August, 1993, at 13 o'clock A.M., and was duly recorded in the Olmsted County records.

By Catherine E. Egan  
County Recorder  
Deputy

UTILITY EASEMENT defined:  
An unobstructed easement for the construction and maintenance of all necessary underground or surface public utilities including rights to conduct drainage and trimming on said easement.

NOTE:  
ALL MONUMENTS SHOWN THUS: ○  
ARE 5/8" I.D. CAPPED PIPES SET  
WITH REGISTRATION NO. 11622.  
ALL MONUMENTS SHOWN THUS: ●  
ARE FOUND 5/8" PIPES.  
BASIS OF BEARING SYSTEMS:  
ALL BEARINGS ARE IN RELATIONSHIP  
WITH THE S. LINE N.E. 1/4 SEC. 32-107-15  
WHICH IS ASSUMED TO BE EAST



In witness whereof said Lorraine Marie Nolting, widow, has caused these presents to be signed this 17th day of August, 1993.  
Lorraine Marie Nolting  
Lorraine Marie Nolting

State of Minnesota  
County of Olmsted  
The foregoing instrument was acknowledged before me this 17th day of August, 1993, by Lorraine Marie Nolting, widow.  
William E. Tointon  
Notary Public, Olmsted County, Minnesota

My commission expires 

### Instrument of dedication

KNOW ALL MEN BY THESE PRESENTS: That Frederick W. Nolting and Norma J. Nolting, husband and wife, owners and proprietors, and Norwest Bank Minnesota Southeast, a National Association, mortgagee, and United States Small Business Administration, a Federal Agency, mortgagee of the following described property situated in the City of Byron, State of Minnesota, to wit:

The South four acres of Block Five (5) in the Original Plat of Byron, Minnesota, except the West 408.00 feet thereof and less the street on the South side thereof, and subject to any highway easements,

together with:

Commencing at the Southeast corner of Block Five (5) of the Original Plat of the Town, now Village, of Byron, Olmsted County, Minnesota, and running thence East 182.50 feet; thence running North 340.00 feet; running thence West 182.50 feet and running thence South to the place of beginning (less the street along the South side thereof), being a part of the Northeast Quarter of Section 32, Township 107 North, Range 15 West, except that part described as follows:

Commencing at the Southeast corner of said Block Five (5) of the Original Plat of Byron; thence North along the East line of said Block Five (5) a distance of 34.69 feet to the North right-of-way line of the Frontage Road (formerly T.H. No. 14); thence Easterly along said right-of-way line a distance of 47.50 feet for a place of beginning; thence continue Easterly along said right-of-way line a distance of 135.00 feet; thence North, a distance of 165.00 feet; thence West parallel to said North right-of-way line a distance of 135.00 feet; thence South a distance of 165.00 feet to the place of beginning.

Containing 1.52 acres, more or less.

have caused the same to be surveyed and platted as NOLTING SUBDIVISION and do hereby dedicate the easements as shown on this plat for drainage and utility purposes only.

In witness whereof said Frederick W. Nolting and Norma J. Nolting, husband and wife, have caused these presents to be signed this 11 day of August, 1993.

Frederick W. Nolting Norma J. Nolting  
Frederick W. Nolting Norma J. Nolting

State of Minnesota  
County of Olmsted

The foregoing instrument was acknowledged before me this 11 day of August, 1993, Frederick W. Nolting and Norma J. Nolting, husband and wife.

Janis A. Hollasech  
Notary Public, Olmsted County, Minnesota

My commission expires

In witness whereof said Northwest Bank Minnesota Southeast, a National Association, has caused these presents to be signed by its proper officers this 10th day of August, 1993.

Ray Matthe Matt K. Blh  
Ray Matthe Matt K. Blh

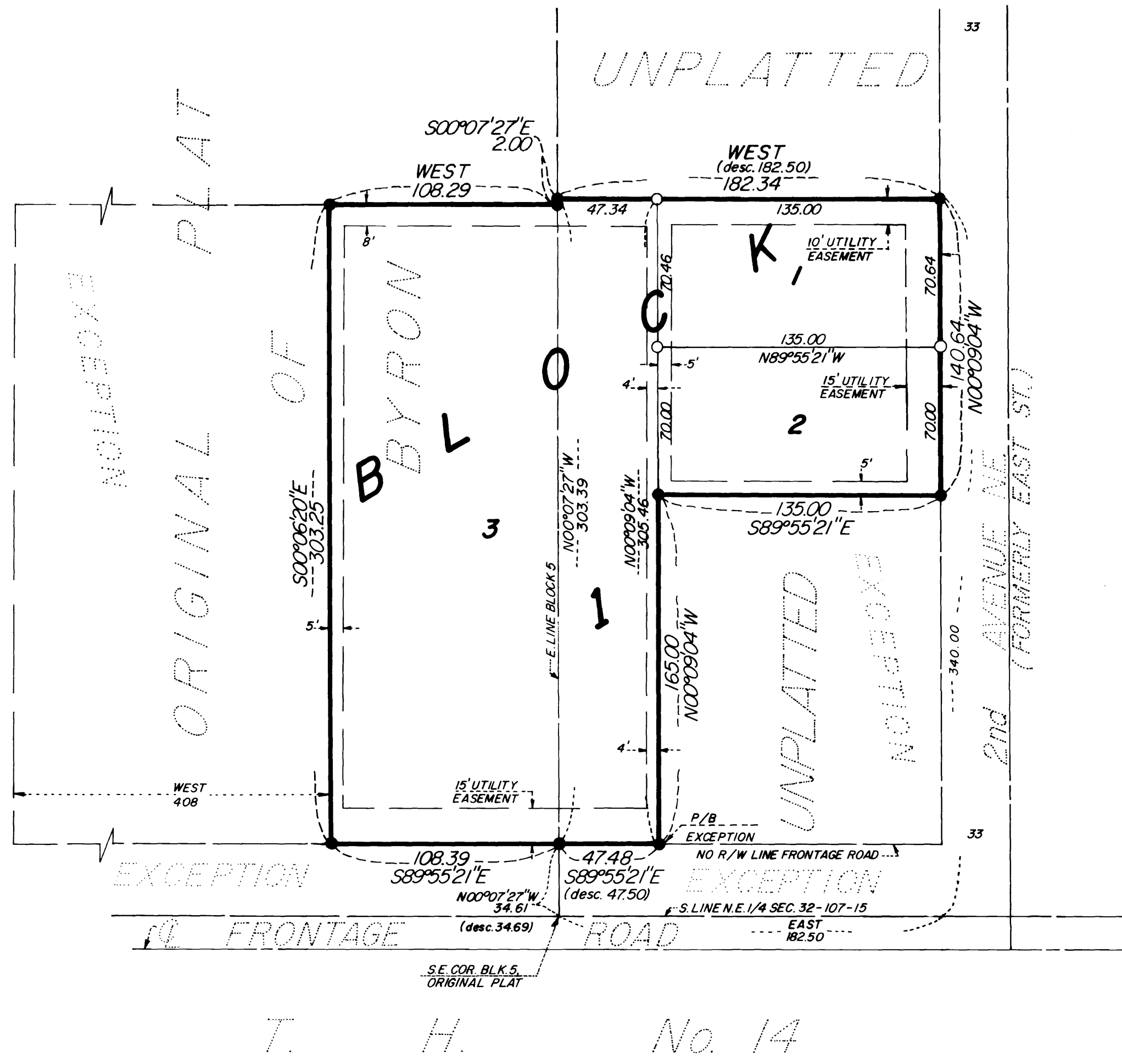
State of Minnesota  
County of Olmsted

The foregoing instrument was acknowledged before me this 10th day of August, 1993, by Ray Matthe, Matt K. Blh, Michael Thacker, Vice President, Business Banking Officer officers of Norwest Bank Minnesota Southeast, a National Association, on behalf of the Association.

Michelle R. Surace  
Notary Public, Olmsted County, Minnesota

My Commission expires 

PREPARED BY:  
McGHEE & BETTS, INC.  
CONSULTING ENGINEERS  
PLANNERS  
LAND SURVEYORS  
ROCHESTER, MINNESOTA



In witness whereof said Minneapolis District Office of the U.S. Small Business Administration, an agency of the United States, has caused these presents to be signed by its proper agent this 6th day of AUGUST, 1993.

Melvin B. Amund  
MELVIN B. AMUND, CHIEF PM  
State of Minnesota  
County of Olmsted Minneapolis

The foregoing instrument was acknowledgement before me this 6th day of AUGUST, 1993, by Melvin B. Amund CHIEF PM, agent of the Minneapolis District Office of the U.S. Small Business Administration, on behalf of the Administration as per LB CFR 101.3-2.

Allice H. Laichon  
Notary Public  
Hennepin County, Minnesota

My Commission expires 2-22-95

