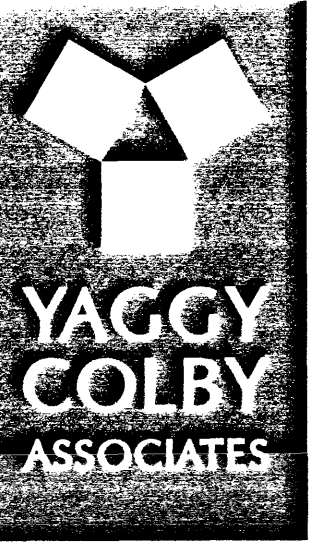


GEORGETOWN MEADOWS FOURTH SUBDIVISION



ENGINEERS • ARCHITECTS
SURVEYORS • PLANNERS
LANDSCAPE ARCHITECTS
717 THIRD AVENUE SOUTHEAST
ROCHESTER, MINNESOTA 55904
307-288-6464
FAX 507-288-5058
EMAIL INFO@YAGGY.COM

INSTRUMENT OF DEDICATION

KNOW ALL MEN BY THESE PRESENTS: That Beach Properties Inc., a Minnesota Corporation, and George H. Beach and Darlene A. Beach, husband and wife, owners and proprietors of the following described property situated in the County of Olmsted, State of Minnesota, to wit:

That part of the Southwest Quarter of the Southwest Quarter of Section 35, Township 105 North, Range 14 West, Olmsted County, Minnesota, described as follows:

Beginning at the southeast corner of Lot 1, Block 5 of GEORGETOWN MEADOWS SECOND SUBDIVISION, according to the plat thereof on file at the County Recorder's office, Olmsted County, Minnesota; thence northerly on a Minnesota State Plane Grid Azimuth from north of 00 degrees 00 minutes 13 seconds along the easterly line of said GEORGETOWN MEADOWS SECOND SUBDIVISION 206.00 feet; thence westerly 270 degrees 00 minutes 13 seconds azimuth along said easterly line 3.07 feet; thence northerly 00 degrees 00 minutes 13 seconds azimuth along said easterly line 140.00 feet; thence easterly 90 degrees 00 minutes 13 seconds azimuth 737.84 feet; thence southeasterly 156 degrees 32 minutes 37 seconds azimuth 377.18 feet; thence westerly 270 degrees 00 minutes 13 seconds azimuth along the north line of GEORGETOWN MEADOWS, according to the plat thereof on file at the County Recorder's office, Olmsted County, Minnesota, and its easterly extension thereof, 884.93 feet to the point of beginning.

Said tract contains 6.44 acres more or less.

Have caused the same to be surveyed and platted as GEORGETOWN MEADOWS FOURTH SUBDIVISION and do hereby donate and dedicate to the public for public use forever the thoroughfares and also dedicate the easements as shown on this plat, for utility purposes only.

In witness whereof, said Beach Properties Inc., a Minnesota Corporation, has caused these presents to be signed by its proper officer this 22 day of August, 2002.

Eugene M. Miller
Eugene M. Miller
Vice President

STATE OF MINNESOTA
COUNTY OF OLMSTED

The foregoing instrument was acknowledged before me this 22 day of August, 2002, by Eugene M. Miller, Vice President of Beach Properties Inc., @ Minnesota Corporation, on behalf of the corporation.

Barbara K. Neubaier
BARBARA K. NEUBAUER
NOTARY PUBLIC-MINNESOTA
My Commission Expires Jan. 31, 2005

Barbara K. Neubaier
Notary Public, Olmsted County, MN
My Commission Expires 1-31-05

In witness whereof, said George H. Beach and Darlene A. Beach, husband and wife, have hereunto set their hands this 26 day of August, 2002.

George H. Beach
George H. Beach
Darlene A. Beach
Darlene A. Beach

STATE OF MINNESOTA
COUNTY OF OLMSTED

The foregoing instrument was acknowledged before me this 26 day of August, 2002, by George H. Beach and Darlene A. Beach, husband and wife.

Barbara K. Neubaier
BARBARA K. NEUBAUER
NOTARY PUBLIC-MINNESOTA
My Commission Expires Jan. 31, 2005

Barbara K. Neubaier
Notary Public, Olmsted County, MN
My Commission Expires 1-31-05

CITY APPROVAL
STATE OF MINNESOTA
COUNTY OF OLMSTED
CITY OF STEWARTVILLE

We do hereby certify that on the 13 day of Aug, 2002, the accompanying plat was duly approved by the Common Council of the City of Stewartville. In testimony whereof, we have hereunto signed our names this 10 day of Aug, 2002.

Chris Gray
Chris Gray
Mayor
Tony Chladek
Tony Chladek
Clerk-Administrator

COUNTY SURVEYOR

I certify that this plat has been checked mathematically and that the plat conforms to applicable platting laws.

This 16 day of August, 2002.

Edward P. Kuisle
Edward P. Kuisle
Olmsted County Surveyor

SURVEYOR'S CERTIFICATE

I do hereby certify that I have surveyed and platted the property described on this plat as GEORGETOWN MEADOWS FOURTH SUBDIVISION; that this plat is a correct representation of said survey; that all distances are correctly shown on said plat in feet and hundredths of a foot; that all monuments have been correctly placed in the ground as shown or will be correctly placed in the ground as designated by July 12, 2003; that the outside boundary lines are correctly designated; and that there are no wetlands as defined in MS 505.02, Subd. 1, or public highways to be designated on said plat other than as shown.

Douglas G. Rude
Douglas G. Rude
Minnesota L.S. No. 22422

STATE OF MINNESOTA
COUNTY OF OLMSTED

The foregoing Surveyor's Certificate was acknowledged before me this 15 day of August, 2002, by Douglas G. Rude, L.S. No. 22422.

Sue E. Madden
SUE E. MADDEN
NOTARY PUBLIC-MINNESOTA
MY COMMISSION EXPIRES 1-31-05

Sue E. Madden
Notary Public, Olmsted County, MN
My Commission Expires 1/31/2005

PROPERTY RECORDS AND LICENSING

Taxes payable in the year 2002 on the land herein described have been paid, there are no delinquent taxes and transfer has been entered this 28 day of August, 2002.

Document Number A-930902

I hereby certify that this instrument was filed in the Office of Property Records and Licensing for the record on this 28 day of August, 2002 at 10:12 o'clock A.m. and was duly recorded in Olmsted County Records.

Daniel J. Hall
Olmsted County Director of
Property Records and Licensing
By Wendy von Wald Deputy

PROJECT NUMBER: 7903
COMPUTER FILE: 7903FNPL01.dwg
DATE: 8/14/02
DRAFTSPERSON: JRP

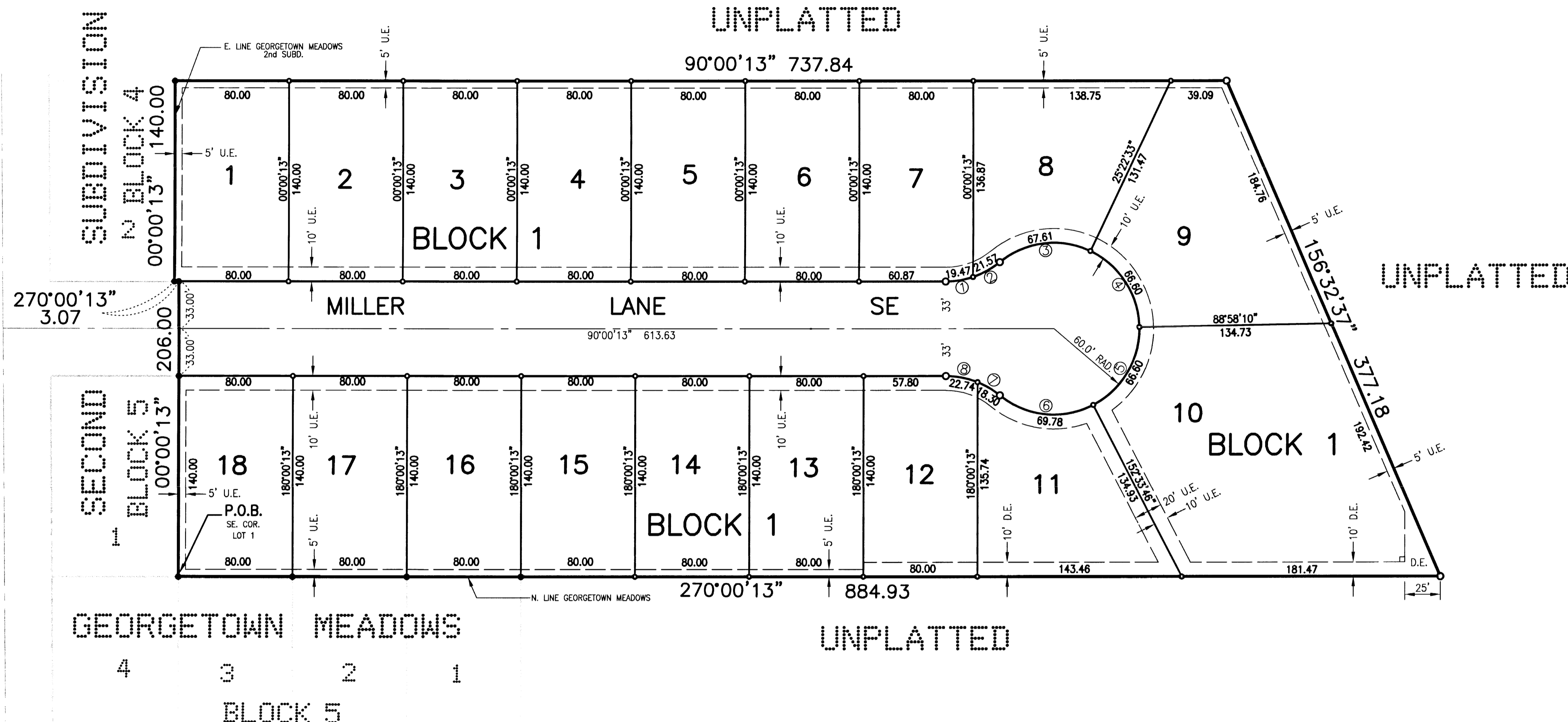
GEORGETOWN MEADOWS FOURTH SUBDIVISION



ENGINEERS • ARCHITECTS
SURVEYORS • PLANNERS
LANDSCAPE ARCHITECTS
717 THIRD AVENUE SOUTHEAST
ROCHESTER, MINNESOTA 55904
307-288-6464
FAX 307-288-5058
EMAIL INFO@YAGGY.COM

GEORGETOWN MEADOWS

GEORGETOWN DRIVE SE



GEORGETOWN MEADOWS
BLOCK 5

UTILITY EASEMENT DEFINED

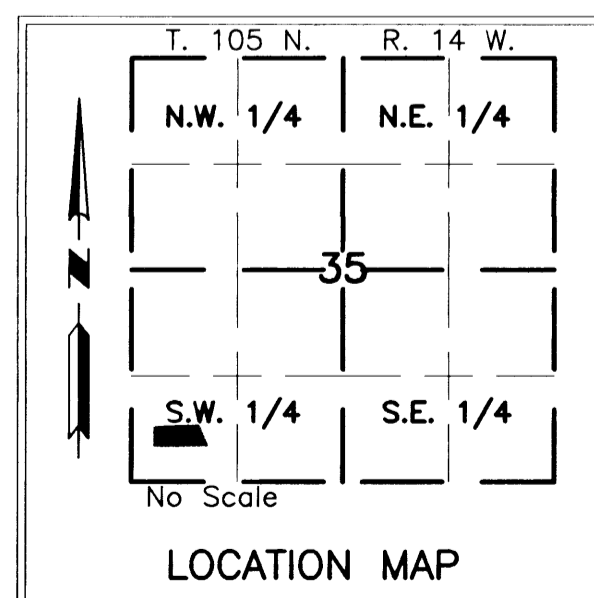
An unobstructed easement for the construction and maintenance of all necessary overhead, underground or surface public utilities, including rights to conduct drainage and trimming on said easement.

U.E. = UTILITY EASEMENT

DRAINAGE EASEMENT DEFINED

An unobstructed easement for the construction and maintenance of underground and surface drainage facilities and utility easement.

D.E. = DRAINAGE EASEMENT



CURVE DATA					
NUMBER	LENGTH	DELTA	RADIUS	CHORD	CHAZ
1	19.47	18°35'43"	60.00	19.39	80°42'22"
2	21.57	20°35'59"	60.00	21.46	61°06'31"
3	67.61	64°34'02"	60.00	64.09	83°05'32"
4	66.60	63°35'37"	60.00	63.23	147°10'21"
5	66.60	63°35'37"	60.00	63.23	210°45'58"
6	69.78	66°38'08"	60.00	65.91	275°52'51"
7	18.30	17°28'40"	60.00	18.23	300°27'35"
8	22.74	21°43'02"	60.00	22.61	280°51'44"

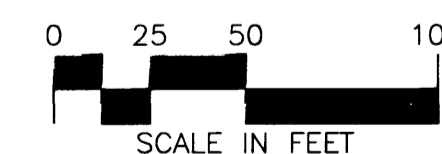
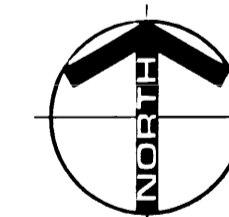
MONUMENTS

- Set 1/2" Rebars
- Set 3/4" Iron Pipes
- Found Monuments (Pipe, Rod, Etc.)

All monuments set have a plastic cap stamped L.S. 22422.

BEARINGS

Plat bearings are Minnesota State Plane Grid Azimuths measured to the right from grid north.



PROJECT NUMBER: 7903 COMPUTER FILE: 7903\FNPL01.dwg DATE: 8/14/02 DRAFTSPERSON: JRP