

MAYOWOOD HILLS SOUTH

Surveyor's Certificate

I hereby certify that I have surveyed and platted the property described on this plat as MAYOWOOD HILLS SOUTH; that this plat is a correct representation of the survey; that all distances are correctly shown on the plat in feet and hundredths of a foot; that all monuments have been correctly placed in the ground as shown; that the outside boundary lines are correctly designated on the plat; and that there are no wet lands as defined in MS 505.02, Subd. 1, or public highways to be designated other than as shown.

James E. Swanson
James E. Swanson, L.S.
Minnesota License Number 11622

State of Minnesota
County of Olmsted

The surveyor's certificate was subscribed and sworn to before me, a Notary Public, this 24th day of February, 1995.

Walter S. Teis
Notary Public, Olmsted County, Minnesota



County Surveyor

I certify that this plat has been checked mathematically and that the plat conforms to the applicable laws, this 3rd day of March, 1995.

Edward Kunitz
Olmsted County Surveyor

County Engineer

Approved this 24th day of March, 1995, by Olmsted County Engineer.

Michael Sheehan
Michael Sheehan, County Engineer

Tax Statements

Taxes payable in the year 1995 on the land herein described have been paid, there are no delinquent taxes and transfer has been entered this 29th day of March, 1995.

Bob Ryan
Olmsted County Auditor/Treasurer

By *Sally Barts* Deputy

County Approval

State of Minnesota
County of Olmsted

I do hereby certify that the accompanying plat was duly approved by the Olmsted County Board of Commissioners at a meeting held on the 28th day of March, 1995. I have signed my name and affixed the seal of said County this 24th day of March, 1995.

Bob Ryan
Olmsted County Auditor
Sally Barts, Deputy

Planning Commission

We, the members of the Olmsted County Planning Advisory Commission, do hereby certify that we have examined the plat as shown and find that it conforms to the provisions of the Subdivision Ordinance of Olmsted County.

Paul R. Allen
Commission Chairman

Township Board

The Township Board of Supervisors of Rochester Township, Olmsted County, do hereby certify that we have approved the accompanying plat. In testimony thereof, we have signed our names this 2 day of MARCH, 1995.

Brenda Dickin *Kathryn A. Thurneau*
Township Board Chairman Township Board Clerk

County Recorder
701230
701230

DOCUMENT NUMBER

I hereby certify that this instrument was filed in the office of the County Recorder for record on this 29 day of March, 1995, at 10 o'clock A.M., and was duly recorded in the Olmsted County records.

By *[Signature]*
County Recorder
Susan Muncy
Deputy

Environmental Commission

The Olmsted County Environmental Commission has approved the plans for water supply and sewage disposal systems for this plat.

Sei Maki R.S.
Olmsted County Environmental Specialist

Instrument of Dedication

KNOW ALL MEN BY THESE PRESENTS: That Maywood Enterprises, Ltd., a Minnesota Limited Partnership, owner and proprietor of the following described property situated in the County of Olmsted, State of Minnesota, to wit:

That part of Section 16, Township 106 North, Range 14 West, Olmsted County, Minnesota, being described as follows:

Commencing at the southwest corner of said Section 16; thence North 01 degree 55 minutes 27 seconds West, assumed bearing, along the west line of said Section 16, a distance of 1957.42 feet to the southwesterly line of MAYOWOOD HILLS THIRD SUBDIVISION (the next 10 courses are along the southerly line of said Subdivision); thence South 44 degrees 09 minutes 28 seconds East, 381.80 feet for a point of beginning; thence North 45 degrees 50 minutes 32 seconds East, 170.00 feet; thence northeasterly 381.51 feet along a tangential curve, concave northwesterly, radius of 1959.86 feet, central angle of 11 degrees 09 minutes 12 seconds and the chord of said curve bears North 40 degrees 15 minutes 56 seconds East, 380.91 feet; thence North 34 degrees 41 minutes 20 seconds East, 880.71 feet; thence northeasterly 186.26 feet along a tangential curve, concave southeasterly, radius of 331.97 feet, central angle of 32 degrees 08 minutes 49 seconds and the chord of said curve bears North 50 degrees 45 minutes 44 seconds East, 183.83 feet; thence North 66 degrees 50 minutes 09 seconds East, 253.40 feet; thence northeasterly 159.58 feet along a tangential curve, concave northwesterly, radius of 622.96 feet, central angle of 14 degrees 40 minutes 38 seconds and the chord of said curve bears North 59 degrees 29 minutes 50 seconds East, 159.15 feet; thence North 52 degrees 09 minutes 31 seconds East, 205.76 feet; thence easterly 251.72 feet along a tangential curve, concave southerly, radius of 236.48 feet, central angle of 60 degrees 59 minutes 17 seconds and the chord of said curve bears North 82 degrees 39 minutes 09 seconds East, 240.00 feet; thence South 66 degrees 51 minutes 12 seconds East, 591.96 feet; thence South 09 degrees 20 minutes 30 seconds West, 1119.86 feet; thence South 34 degrees 11 minutes 44 seconds West, 471.51 feet; thence South 29 degrees 16 minutes 05 seconds West, 521.58 feet; thence North 37 degrees 21 minutes 24 seconds West, 268.30 feet; thence South 40 degrees 53 minutes 04 seconds West, 386.72 feet; thence North 49 degrees 06 minutes 56 seconds West, 12.03 feet; thence South 61 degrees 19 minutes 11 seconds West, 413.88 feet; thence North 39 degrees 03 minutes 46 seconds West, 470.35 feet to the point of beginning.

Containing 63.28 acres more or less.

have caused the same to be surveyed and platted as MAYOWOOD HILLS SOUTH and do hereby donate and dedicate to the public for the public use forever the thoroughfare and cul-de-sacs and also dedicate the easements as shown on this plat for drainage and utility purposes only.

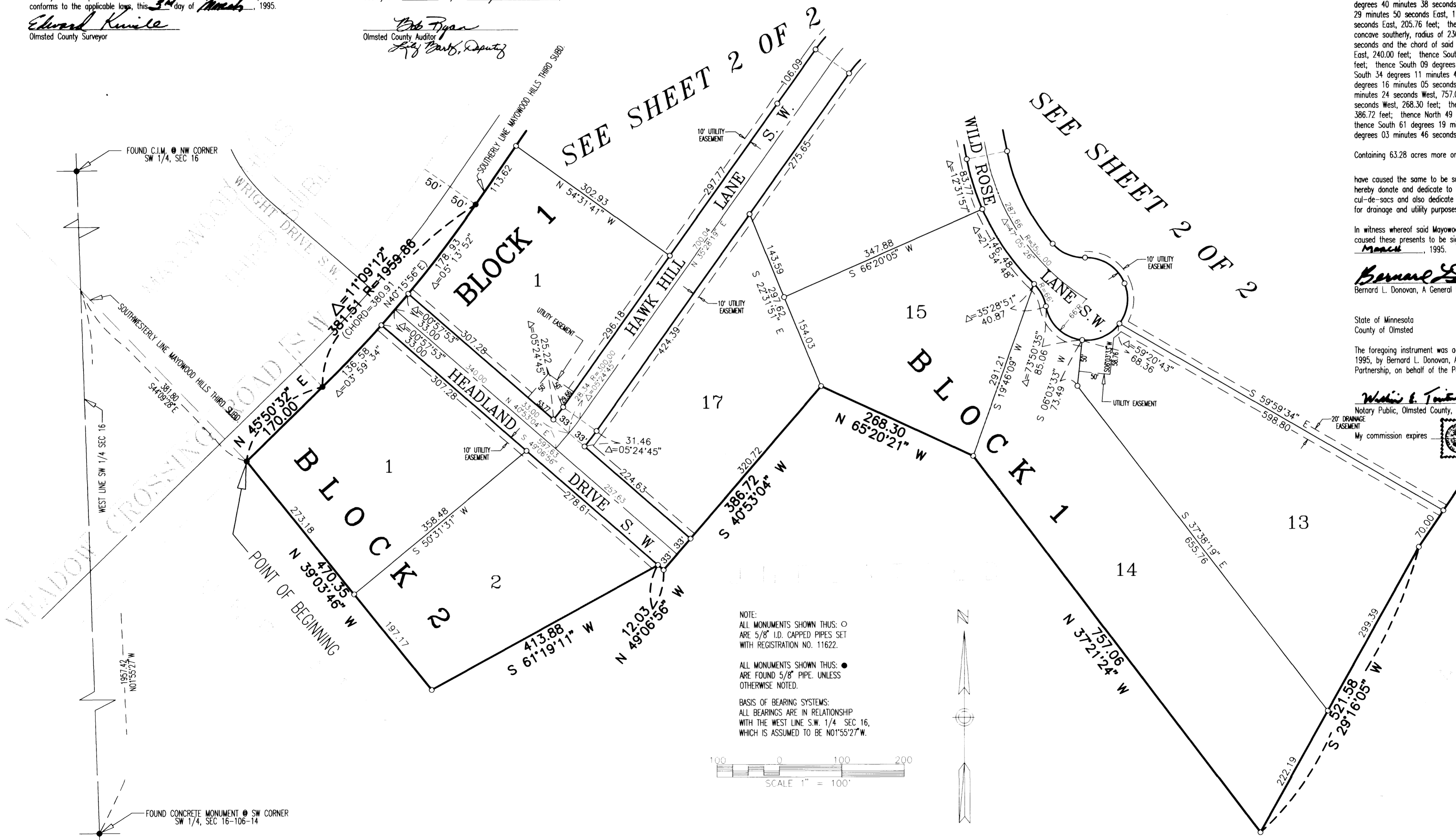
In witness whereof said Maywood Enterprises, Ltd., a Minnesota Limited Partnership, has caused these presents to be signed by a general partner this 24th day of March, 1995.

Bernard L. Donovan
Bernard L. Donovan, A General Partner

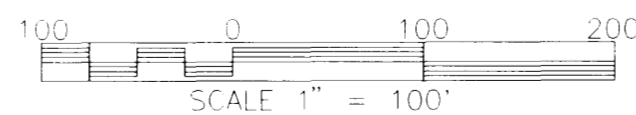
State of Minnesota
County of Olmsted

The foregoing instrument was acknowledged before me this 1st day of March, 1995, by Bernard L. Donovan, A General Partner of Maywood Enterprises, Ltd., a Minnesota Limited Partnership, on behalf of the Partnership.

Walter S. Teis
Notary Public, Olmsted County, Minnesota



NOTE:
ALL MONUMENTS SHOWN THUS: ○
ARE 5/8" I.D. CAPPED PIPES SET WITH REGISTRATION NO. 11622.
ALL MONUMENTS SHOWN THUS: ●
ARE FOUND 5/8" PIPE, UNLESS OTHERWISE NOTED.
BASIS OF BEARING SYSTEMS:
ALL BEARINGS ARE IN RELATIONSHIP WITH THE WEST LINE S.W. 1/4 SEC 16, WHICH IS ASSUMED TO BE N01°55'27" W.



PREPARED BY:
MCGHEE & BETTS, INC.
CONSULTING ENGINEERS
PLANNERS, LAND SURVEYORS
ROCHESTER, MINNESOTA

