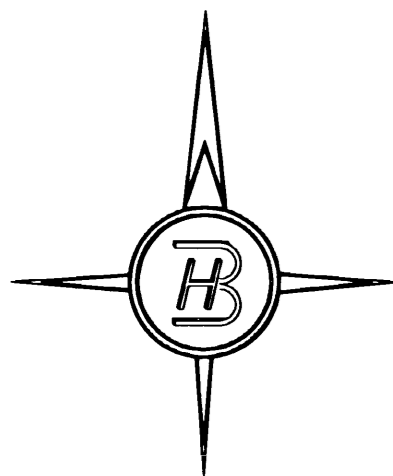
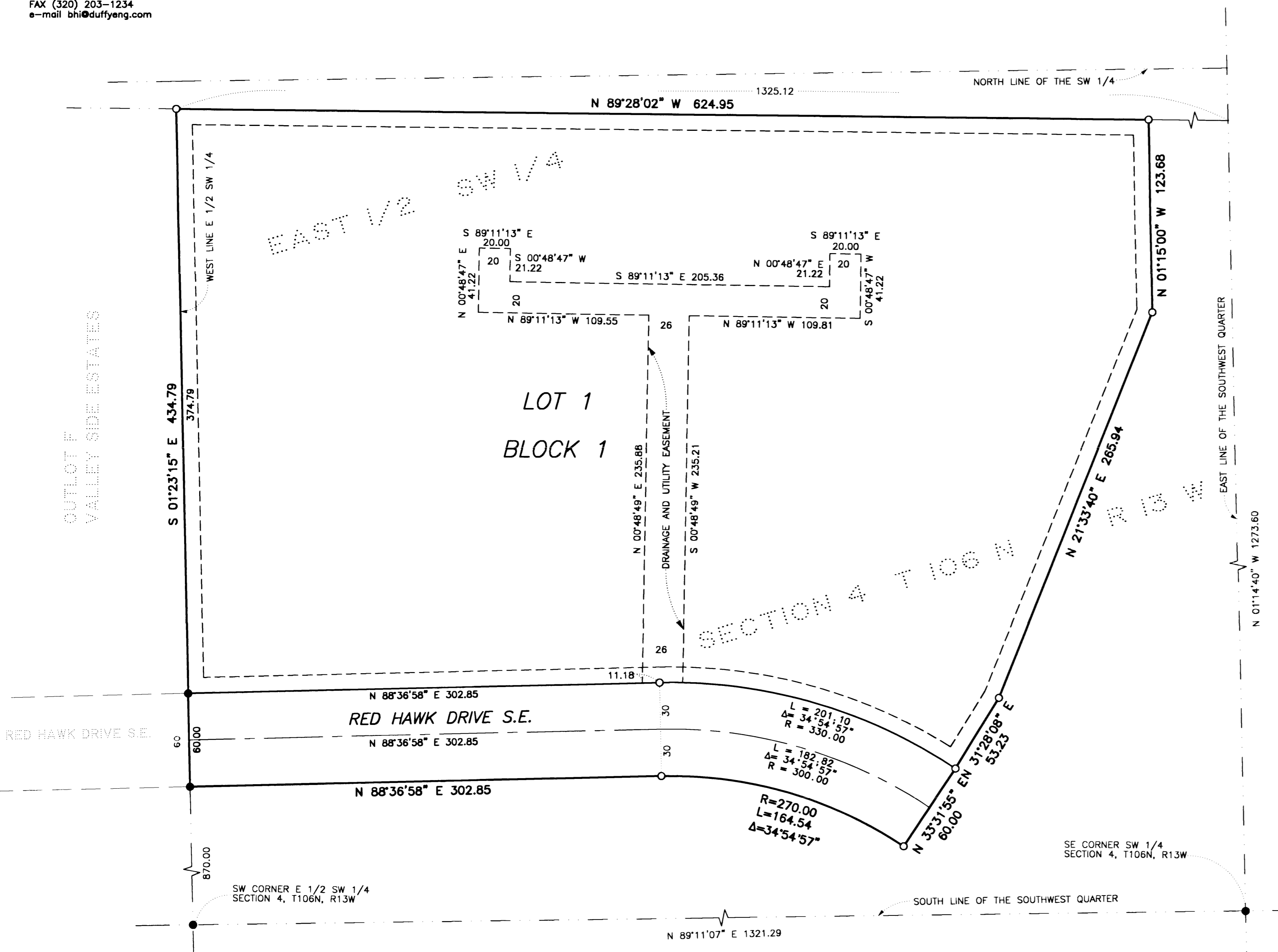
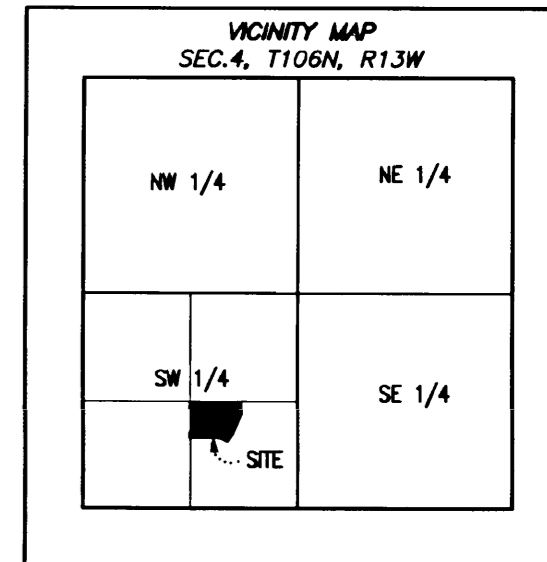


ROLLING RIDGE



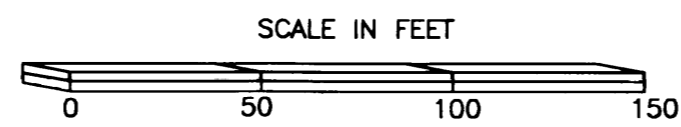
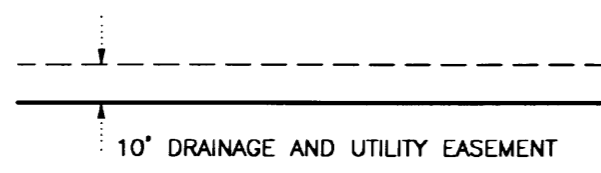
BROWN HERKENHOFF
1424 2ND STREET NORTH
SAUK RAPIDS, MN 56379
(320) 259-1234
FAX (320) 203-1234
e-mail bnh@duffyeng.com



BEARING ORIENTATION:
ALL BEARINGS ARE BASED ON THE SOUTH LINE OF THE SOUTHWEST QUARTER OF SECTION 4, TOWNSHIP 106 NORTH, RANGE 13 WEST, WHICH IS ASSUMED TO BEAR N 89°11'07" E.

UTILITY EASEMENTS DEFINED:
AN UNOBSTRUCTED EASEMENT FOR THE CONSTRUCTION AND MAINTENANCE OF ALL NECESSARY UNDERGROUND OR SURFACE PUBLIC UTILITIES INCLUDING THE RIGHT TO CONDUCT DRAINAGE AND TRIMMING ON SAID EASEMENTS.

DRAINAGE EASEMENTS DEFINED:
AN UNOBSTRUCTED EASEMENT FOR THE OPERATION AND MAINTENANCE OF ALL WATERWAYS, BOTH SURFACE AND UNDERGROUND, RUNNING OVER, UNDER, AND ACROSS SAID EASEMENT.



○ DENOTES IRON MONUMENT SET
● DENOTES IRON MONUMENT FOUND

INSTRUMENT OF DEDICATION

AND KNOW ALL MEN BY THESE PRESENTS: Gopher State Development Group, L.L.C., a limited liability company under Laws of the State of Minnesota, owners and proprietors, of the following described property, situated in the County of Olmsted, State of Minnesota, to wit:

That part of the east 1/2 of the SW 1/4 of section 4, T106N-R13W, lying south of trunk Highway 14 Described as follows: Commencing at the southeast corner of said SW 1/4; thence North 01 degrees 14 minutes 40 seconds West on an assumed bearing, along the east line of the SW 1/4 a distance of 1273.60 feet; thence North 89 degrees 28 minutes 02 seconds west to the west line of E 1/2 of SW 1/4; to the point of beginning of the land to be described: thence South 01 degrees 23 minutes 15 seconds East, along the west line of said East half of SW 1/4, a distance of 434.79 feet; thence North 88 degrees 36 minutes 58 seconds East, a distance of 302.85 feet; thence 164.54 feet southeasterly along a non-tangential curve, concave to the southwest, having a radius of 270.00 feet and a central angle of 34 degrees 54 minutes 57 seconds; thence North 33 degrees 31 minutes 55 seconds East not tangent to said curve, a distance of 80.00 feet; thence North 28 minutes 08 seconds East, a distance 53.23 feet; thence North 21 degrees 33 minutes 40 seconds East, a distance of 265.94 feet; thence North 01 degrees 15 minutes 00 seconds West a distance of 123.68; thence North 89 degrees 28 minutes 02 seconds West a distance of 624.95 feet; to the point of beginning.

Have caused the same to be surveyed and platted as ROLLING RIDGE and do hereby donate and dedicate to the public for public use forever the thoroughfare and also dedicating the easements as shown on this plat for drainage and utility purposes only.

In witness whereof said Gopher State Development Group, L.L.C., a limited liability company under the Laws of the State of Minnesota, has caused these presents to be signed by its proper officer this 1st day of August, 2002.

Gopher State Development Group, L.L.C.

Thomas W. Halloran its Chief Manager

STATE OF MINNESOTA
COUNTY OF OLMSTED

The foregoing instrument was acknowledged before me this 1st day of August, 2002 by Thomas W. Halloran its Chief Manager of Gopher State Development Group L.L.C., a limited liability company under the laws of the State of Minnesota, on behalf of said corporation.

CITY APPROVAL
STATE OF MINNESOTA
COUNTY OF OLMSTED
CITY OF ROCHESTER

I, JUDITH KAY ELLIOTT, City Clerk, in and for the City of Rochester, do hereby certify that on the 10th day of August, 2002, the accompanying plat was duly approved by the Common Council of the City of Rochester. In testimony thereof, I have hereunto signed my name and affixed the Seal of said City of Rochester this 10th day of August, 2002.

Judith Kay Elliott
City Clerk
City of Rochester

COUNTY SURVEYOR

I certify that this plat has been checked mathematically and that the plat conforms to applicable platting laws.

This 2nd day of August, 2002.
Linda H. Brown
Olmsted County Surveyor

SURVEYOR'S CERTIFICATE

I do hereby certify that I have surveyed and platted the property described on this plat as ROLLING RIDGE; that this plat is a correct representation of said survey; that all distances are correctly shown on said plat in feet and hundredths of a foot; that all monuments have been correctly placed in the ground as shown on this plat; that the outside boundary lines are correctly designated; and that there are no wetlands as defined in MS 505.02 Subd. 1, or public highways to be designated on said plat other than as shown.

Linda H. Brown
Linda H. Brown
Minnesota L.S. No. 23682

STATE OF MINNESOTA
COUNTY OF BENTON

The foregoing Surveyor's Certificate was acknowledged before me this 24 day of July, 2002 by Linda H. Brown, L.S. No. 23682.

Linda H. Brown
Notary Public, Benton County, Mn
My Commission Expires 1-31-2005

PROPERTY RECORDS AND LICENSING

Taxes payable in the year 2002 on the land herein described have been paid, there are no delinquent taxes and transfer has been entered this 13th day of August, 2002.

Document Number A-928585

I hereby certify that this instrument was filed in the Office of the County Recorder for the record on this 13th day of August, 2002, at 2:12 o'clock P. m. and was duly recorded in Olmsted County Records.

Daniel J. Hall
Director of Property Records & Licensing
Wendy Ann Wald
Deputy



369A