

RESUBDIVISION OF OUTLOT 'A' ROLLING GREENS SECOND REPLAT ROCHESTER, MINNESOTA

SURVEYOR'S CERTIFICATE

STATE OF MINNESOTA) S.S.
COUNTY OF OLMSTED)

I DO HEREBY CERTIFY THAT I HAVE SURVEYED AND PLATTED THE PROPERTY DESCRIBED ON THIS PLAT AS "RESUBDIVISION OF OUTLOT 'A' ROLLING GREENS SECOND REPLAT"; THAT THIS IS A CORRECT REPRESENTATION OF SAID SURVEY; THAT ALL DISTANCES ARE CORRECTLY SHOWN ON SAID PLAT IN FEET AND DECIMALS OF A FOOT; THAT ALL MONUMENTS HAVE BEEN CORRECTLY PLACED IN THE GROUND AS SHOWN ON THE PLAT; THAT THE OUTSIDE BOUNDARY LINES ARE CORRECTLY DESIGNATED ON THE PLAT; THAT THERE ARE NO WET LANDS; AND THAT SAID PLAT HAS BEEN PREVIOUSLY PLATTED AS A PART OF ROLLING GREENS SECOND REPLAT.

Douglas M. Betts
DOUGLAS M. BETTS, P.E. & R.L.S.
MINNESOTA REGISTRATION NO. 6980

STATE OF MINNESOTA) S.S.
COUNTY OF OLMSTED)

THE ABOVE SURVEYOR'S CERTIFICATE WAS SUBSCRIBED AND SWORN TO BEFORE ME, A NOTARY PUBLIC WITHIN AND FOR SAID COUNTY AND STATE ON THIS 18TH DAY OF March 1977 A.D.

Howard E. Hunt
NOTARY PUBLIC, OLMSTED COUNTY, MINNESOTA
Notary Public, Olmsted County, Minn.
My Commission Expires Dec. 9, 1978 19 A.D.

COUNTY SURVEYOR'S CERTIFICATE OF APPROVAL

I CERTIFY THAT THIS PLAT HAS BEEN CHECKED MATHEMATICALLY AND THAT THE PLAT CONFORMS TO THE APPLICABLE PLATTING LAWS:

APPROVED THIS 18TH DAY OF March 1977 A.D.

BY *Roger W. Brand*
OLMSTED COUNTY SURVEYOR

STATE OF MINNESOTA) S.S.
COUNTY OF OLMSTED)

I, CAROLE A. GRIMM, CITY CLERK IN AND FOR THE CITY OF ROCHESTER, DO HEREBY CERTIFY THAT ON THE 18TH DAY OF April 1977 A.D., THE ANNEXED PLAT WAS DULY APPROVED BY THE COMMON COUNCIL OF THE CITY OF ROCHESTER. IN TESTIMONY THEREOF, I HAVE HEREBY SIGNED MY NAME AND AFFIXED THE SEAL OF SAID CITY OF ROCHESTER THIS 19TH DAY OF April 1977 A.D.

Carole A. Grimm
CITY CLERK

NO DELINQUENT TAXES DUE AND TRANSFER ENTERED THIS 22ND DAY OF April 1977 A.D.

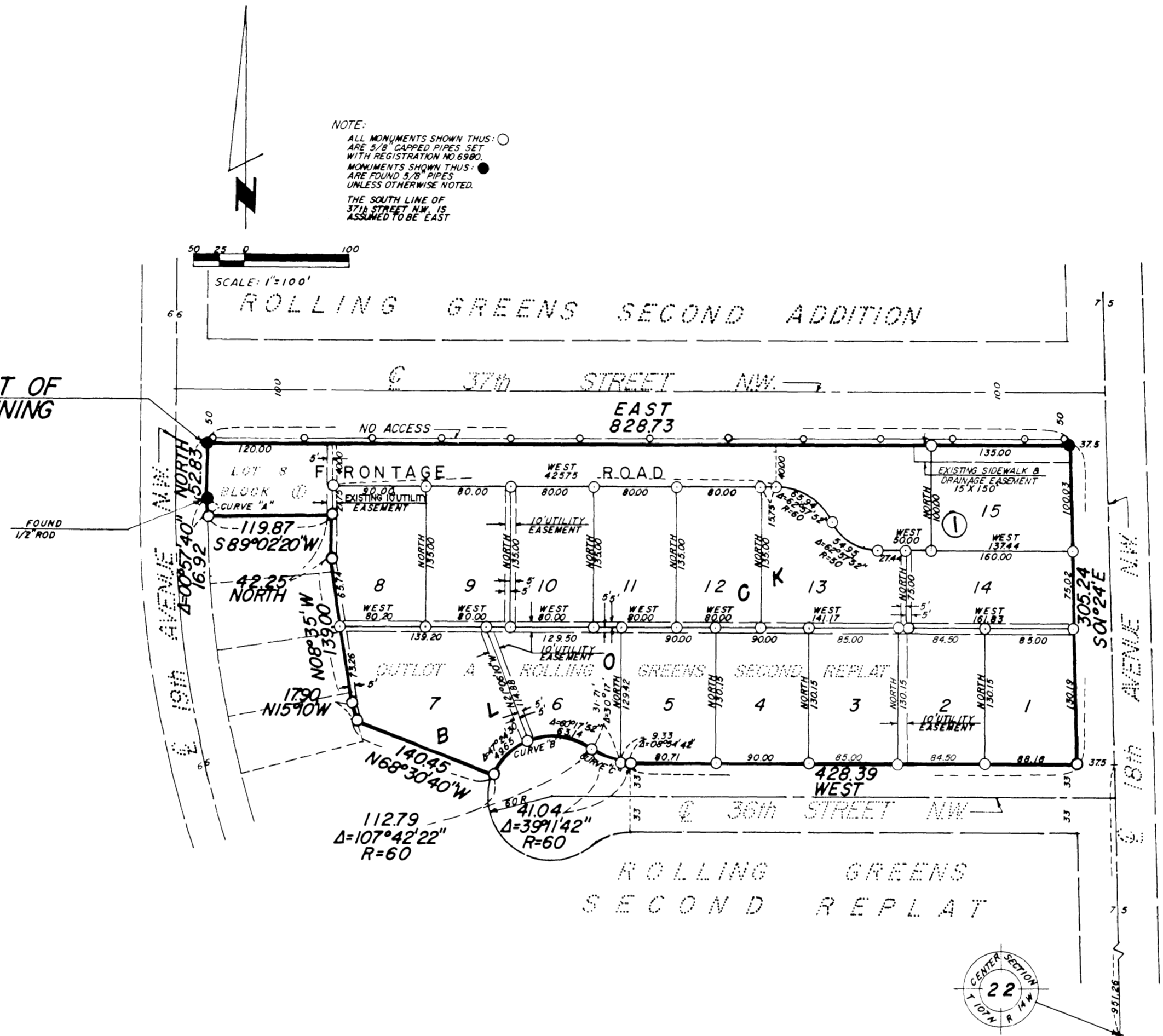
Ross Branning
COUNTY AUDITOR 286316

STATE OF MINNESOTA) S.S.
COUNTY OF OLMSTED)

FILED FOR RECORD THIS 26TH DAY OF April 1977 A.D. AT 9¹⁵ O'CLOCK A. M. IN BOOK OF PLATS ON PAGE INSTRUMENT NO.

Larry A. Evans
COUNTY RECORDER
Larry A. Evans, Deputy

NOTE:
ALL MONUMENTS SHOWN THIS: ○
ARE 5/8" IRON PIPES SET
WITH REGISTRATION NO. 6980
MONUMENTS SHOWN THIS: ●
ARE TYPING 5/8" PIPES
UNLESS OTHERWISE NOTED.
THE SOUTH LINE OF
37TH STREET N.W. IS
ASSUMED TO BE EAST



CURVE	Δ	T	L	R
A	00°57'40"	8.46	16.92	100874
B	107°42'22"	82.14	112.79	60.00
C	39°1'42"	21.36	41.04	60.00

NO ACCESS DEFINED:

INGRESS AND EGRESS BY VEHICULAR TRAVEL IS NOT PERMITTED OVER AND ACROSS THAT PART OF THE SOUTH RIGHT OF WAY LINE OF 37TH STREET N.W., WHICH ABUTTS OUTLOT A AND LOT B OF BLOCK 1, ROLLING GREENS SECOND REPLAT.

SIDEWALK AND DRAINAGE EASEMENT DEFINED:

AN UNOBSTRUCTED EASEMENT FOR THE CONSTRUCTION AND MAINTENANCE OF A PEDESTRIAN WALKWAY AND RIGHTS TO CONDUCT DRAINAGE ON SAID EASEMENT.

UTILITY EASEMENT DEFINED:

AN UNOBSTRUCTED EASEMENT FOR THE CONSTRUCTION AND MAINTENANCE OF ALL NECESSARY OVERHEAD, UNDERGROUND, OR SURFACE, PRIVATE AND PUBLIC UTILITIES, INCLUDING RIGHTS TO CONDUCT DRAINAGE AND TRIMMING ON SAID EASEMENT.

KNOW ALL MEN BY THESE PRESENTS:

THAT H.E. PAYNE AND H.W. HODGE, OWNERS AND PROPRIETORS OF THE FOLLOWING DESCRIBED PROPERTY SITUATED IN THE CITY OF ROCHESTER, STATE OF MINNESOTA TO WIT:

OUTLOT 'A' AND LOT 8, BLOCK 1, ROLLING GREENS SECOND REPLAT, ROCHESTER, MINNESOTA. CONTAINING 5.03 ACRES.

HAVE CAUSED THE SAME TO BE SURVEYED AND REPLATTED AS "RESUBDIVISION OF OUTLOT 'A' ROLLING GREENS SECOND REPLAT"; AND DO HEREBY DONATE AND DEDICATE TO THE PUBLIC USE FOREVER THE FRONTAGE ROAD SHOWN THEREON AND GRANT THE EASEMENTS DEFINED THEREON IN WITNESS WHEREOF WE HEREBY SET OUR HANDS THIS 17TH DAY OF MARCH 1977 A.D.

H.E. Payne
H.E. PAYNE

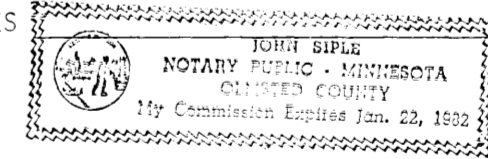
H.W. Hodge
H.W. HODGE

STATE OF MINNESOTA) S.S.
COUNTY OF OLMSTED)

ON THIS 17TH DAY OF March 1977 A.D., BEFORE ME A NOTARY PUBLIC IN AND FOR SAID COUNTY, PERSONALLY APPEARED H.E. PAYNE AND H.W. HODGE, TO ME KNOWN TO BE THE PERSONS DESCRIBED IN AND WHO EXECUTED THE SAME AS THEIR FREE ACT AND DEED.

John Siple
NOTARY PUBLIC, OLMSTED COUNTY, MINNESOTA

MY COMMISSION EXPIRES 19 A.D.



OFFICIAL PLAT

PREPARED BY:
McGHEE & BETTS, IN
CONSULTING ENGINEERS
ROCHESTER, MINNESOTA