

KELLY'S FIRST SUBDIVISION

OLMSTED COUNTY

SURVEYOR'S CERTIFICATE

STATE OF MINNESOTA) S.S.
COUNTY OF OLSTED)

I DO HEREBY CERTIFY THAT I HAVE SURVEYED AND PLATTED THE PROPERTY DESCRIBED ON THIS PLAT AS "KELLY'S FIRST SUBDIVISION"; THAT THIS IS A CORRECT REPRESENTATION OF SAID SURVEY; THAT ALL DISTANCES ARE CORRECTLY SHOWN ON SAID PLAT IN FEET AND DECIMALS OF A FOOT; THAT ALL MONUMENTS HAVE BEEN CORRECTLY PLACED IN THE GROUND AS SHOWN ON THE PLAT; THAT THE OUTSIDE BOUNDARY LINES ARE CORRECTLY DESIGNATED ON THE PLAT; THAT THERE ARE NO WET LANDS OTHER THAN AS SHOWN THEREON; AND THAT THE SAID PLAT HAS NOT BEEN PREVIOUSLY PLATTED.

Douglas N. Betts
DOUGLAS N. BETTS, P.E. & R.L.S.
MINNESOTA REGISTRATION NO. 6980

STATE OF MINNESOTA) S.S.
COUNTY OF OLSTED)

THE ABOVE SURVEYOR'S CERTIFICATE WAS SUBSCRIBED AND SWORN TO BEFORE ME, A NOTARY PUBLIC WITHIN AND FOR SAID COUNTY AND STATE ON THIS 30th DAY OF July 1976 A.D.

Howard E. Hunt
NOTARY PUBLIC, OLSTED COUNTY, MINNESOTA
HOWARD E. HUNT
Notary Public, Olmsted County, Minn.
MY COMMISSION EXPIRES My Commission Expires Dec. 9, 1978 A.D.

COUNTY SURVEYOR'S CERTIFICATE OF APPROVAL

I CERTIFY THAT THIS PLAT HAS BEEN CHECKED MATHEMATICALLY AND THAT THE PLAT CONFORMS TO THE APPLICABLE PLATTING LAWS:

APPROVED THIS 30th DAY OF July 1976 A.D.

BY *Roger W. Brand*
OLMSTED COUNTY SURVEYOR

WE, THE MEMBERS OF THE TOWNSHIP BOARD OF SUPERVISORS FOR MARION TOWNSHIP, OLSTED COUNTY, MINNESOTA, DO HEREBY CERTIFY THAT WE HAVE APPROVED THE ACCOMPANYING PLAT. IN TESTIMONY WHEREOF, WE HAVE SIGNED OUR NAMES THIS 30 DAY OF July 1976 A.D.

Richard D. Bell
SUPERVISOR

Angela Carlson
SUPERVISOR

Paul Stellpflug
CHAIRMAN

WE, THE MEMBERS OF THE OLSTED COUNTY PLANNING ADVISORY COMMISSION, DO HEREBY CERTIFY THAT WE HAVE EXAMINED THE PLAT AS SHOWN, AND FIND THAT IT CONFORMS TO THE PROVISIONS OF THE SUBDIVISION ORDINANCE OF THE COUNTY OF OLSTED.

Paul Stellpflug
COMMISSION VICE CHAIRMAN

STATE OF MINNESOTA) S.S.
COUNTY OF OLSTED)

I ROSS E. BROWNING, COUNTY AUDITOR FOR SAID COUNTY, DO HEREBY CERTIFY THAT THE ANNEXED PLAT WAS DULY APPROVED BY THE BOARD OF COUNTY COMMISSIONERS AT A MEETING HELD ON THE 3rd DAY OF August 1976 A.D. IN TESTIMONY WHEREOF I HAVE SIGNED MY NAME AND AFFIXED THE SEAL OF SAID COUNTY THIS 11th DAY OF August 1976 A.D.

Ross Browning
COUNTY AUDITOR

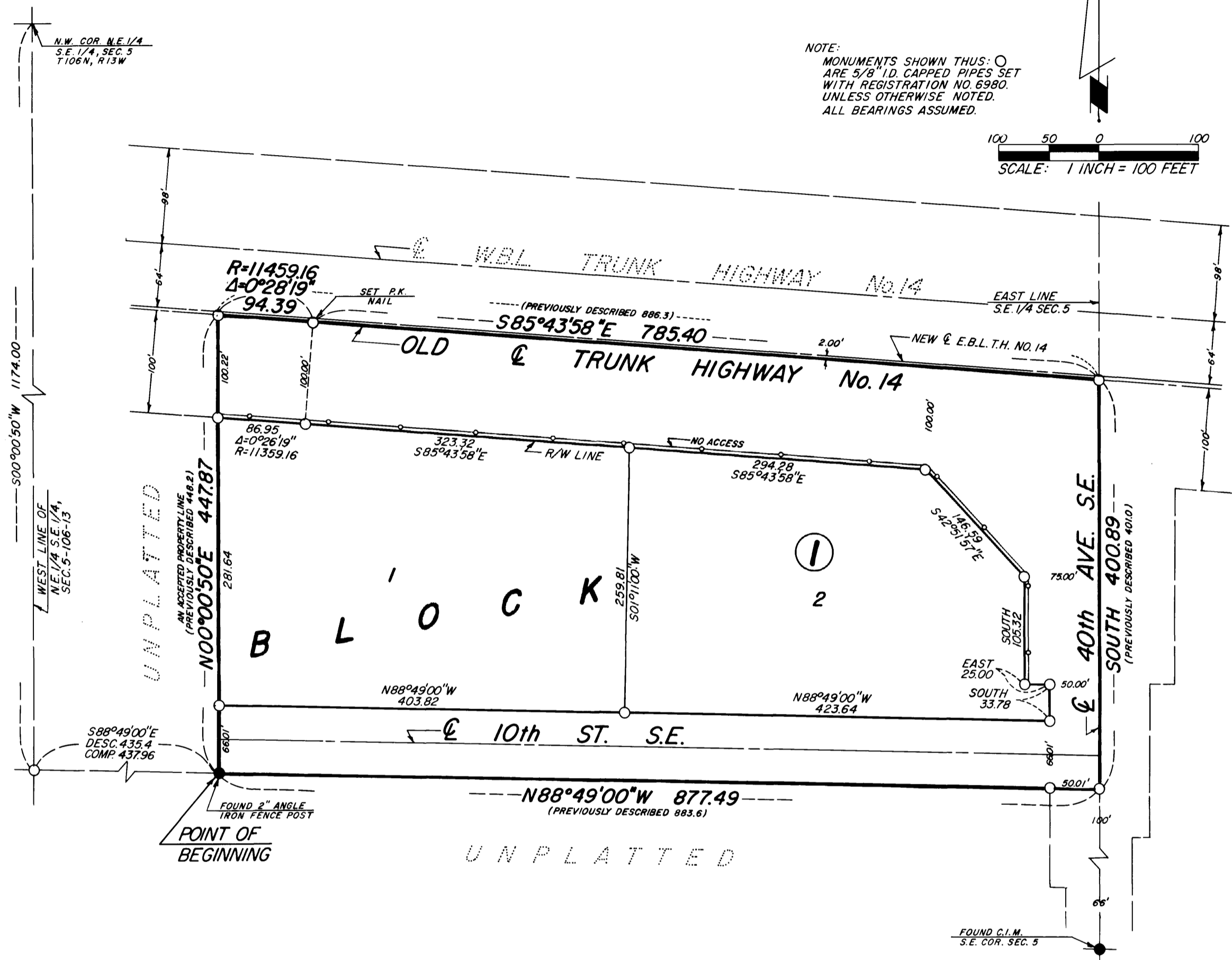
NO DELINQUENT TAXES DUE AND TRANSFER ENTERED THIS 11th DAY OF August 1976 A.D.

Ross Browning
COUNTY AUDITOR

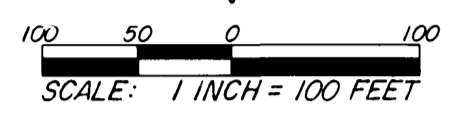
STATE OF MINNESOTA) S.S.
COUNTY OF OLSTED)

FILED FOR RECORD THIS 11 DAY OF August 1976 A.D. AT 10:2 O'CLOCK A. M.
IN BOOK _____ OF PLATS ON PAGE _____ INSTRUMENT NO. _____

Harry D. Evans
REGISTER OF DEEDS
Catherine L. Evans, Deputy



NOTE:
MONUMENTS SHOWN THUS: O
ARE 5/8" I.D. CAPPED PIPES SET
WITH REGISTRATION NO. 6980.
UNLESS OTHERWISE NOTED.
ALL BEARINGS ASSUMED.



OWNERS DEDICATION:

KNOW ALL MEN BY THESE PRESENTS:

THAT FLOYD E. LARSON AND MARIAN G. LARSON, HIS WIFE, OWNERS AND PROPRIETORS OF THE FOLLOWING DESCRIBED PROPERTY SITUATED IN THE CITY OF ROCHESTER, STATE OF MINNESOTA, TO WIT:

COMMENCING AT THE NORTHWEST CORNER OF THE NORTHEAST QUARTER OF THE SOUTHEAST QUARTER OF SECTION 5, TOWNSHIP 106 NORTH, RANGE 13 WEST, THENCE SOUTH ALONG THE WEST LINE OF SAID NORTHEAST QUARTER A DISTANCE OF 1174.0 FEET, THENCE EAST PARALLEL WITH THE SOUTH LINE OF SAID SOUTHEAST QUARTER A DISTANCE OF 435.4 FEET FOR A POINT OF BEGINNING, THENCE NORTH PARALLEL WITH THE WEST LINE OF SAID NORTHEAST QUARTER A DISTANCE OF 448.2 FEET TO A POINT IN THE CENTERLINE OF TRUNK HIGHWAY NO. 14, THENCE EASTERLY ALONG THE CENTERLINE OF SAID HIGHWAY A DISTANCE OF 886.3 FEET TO A POINT IN THE EAST LINE OF SAID NORTHEAST QUARTER, THENCE SOUTH ALONG SAID EAST LINE A DISTANCE OF 401.0 FEET, THENCE WEST PARALLEL WITH THE SOUTH LINE OF SAID SOUTHEAST QUARTER A DISTANCE OF 883.6 FEET TO THE POINT OF BEGINNING.

CONTAINING 8.59 ACRES.

HAVE CAUSED THE SAME TO BE SURVEYED AND PLATTED AS "KELLY'S FIRST SUBDIVISION" AND DO HEREBY DONATE AND DEDICATE TO THE PUBLIC USE FOREVER THE STREETS, AVENUES, AND ROADWAY SHOWN THEREON, IN WITNESS WHEREOF WE HAVE HEREUNTO SET OUR HANDS THIS 30th DAY OF July 1976 A.D.

Floyd E. Larson *Marian G. Larson*
FLOYD E. LARSON MARIAN G. LARSON

STATE OF MINNESOTA) S.S.
COUNTY OF OLSTED)

ON THIS 30th DAY OF July 1976 A.D., BEFORE ME A NOTARY PUBLIC IN AND FOR SAID COUNTY, PERSONALLY APPEARED FLOYD E. LARSON AND MARIAN G. LARSON, HIS WIFE, TO ME PERSONALLY KNOWN, TO BE THE PERSONS DESCRIBED IN AND WHO EXECUTED THE SAME AS THEIR FREE ACT AND DEED.

Howard E. Hunt
NOTARY PUBLIC, OLSTED COUNTY, MINNESOTA
HOWARD E. HUNT
Notary Public, Olmsted County, Minn.
MY COMMISSION EXPIRES My Commission Expires Dec. 9, 1978

I HEREBY APPROVE THIS PLAT AS TO WATER SUPPLY AND SEWAGE DISPOSAL WITH THE STIPULATION THAT THE LOTS CANNOT BE SUBDIVIDED UNLESS PUBLIC SEWER IS AVAILABLE.

William P. Peltz
PUBLIC HEALTH ENGINEER
OLMSTED COUNTY DEPARTMENT OF HEALTH

APPROVED BY THE OLSTED COUNTY HIGHWAY DEPARTMENT

J.K. Rolan
COUNTY ENGINEER

OFFICIAL PLAT

PREPARED BY:
MCGHEE & BETTS, INC.
CONSULTING ENGINEER'S
ROCHESTER, MINNESOTA