

RENA BELLE FIFTH ADDITION

EYOTA, MINNESOTA

SURVEYOR'S CERTIFICATE

STATE OF MINNESOTA) s.s.
 COUNTY OF OLMSTED)

I DO HEREBY CERTIFY THAT I HAVE SURVEYED AND PLATTED THE PROPERTY DESCRIBED ON THIS PLAT AS "RENA BELLE FIFTH ADDITION"; THAT THIS IS A CORRECT REPRESENTATION OF SAID SURVEY; THAT ALL DISTANCES ARE CORRECTLY SHOWN ON SAID PLAT IN FEET AND DECIMALS OF A FOOT; THAT ALL MONUMENTS HAVE BEEN CORRECTLY PLACED IN THE GROUND AS SHOWN ON THE PLAT; THAT THE OUTSIDE BOUNDARY LINES ARE CORRECTLY DESIGNATED ON THE PLAT; THAT THERE ARE NO WET LANDS; AND THAT THE SAID PLAT HAS NOT BEEN PREVIOUSLY PLATTED EXCEPT THAT PART OF LOT 3, RENA BELLE ADDITION AS SHOWN.

Douglas N. Butts
 DOUGLAS N. BUTTS, P.E. & R.L.S.
 MINNESOTA REGISTRATION NO. 6980

STATE OF MINNESOTA) s.s.
 COUNTY OF OLMSTED)

THE ABOVE SURVEYOR'S CERTIFICATE WAS SUBSCRIBED AND SWORN TO BEFORE ME, A NOTARY PUBLIC WITHIN AND FOR SAID COUNTY AND STATE ON THIS 9th DAY OF September 1976 A.D.

Howard E. Hunt
 NOTARY PUBLIC, OLMSTED COUNTY, MINNESOTA

HOWARD E. HUNT
 Notary Public, Olmsted County, Minn.

MY COMMISSION EXPIRES My Commission Expires Dec. 9, 1978 19 A.D.

COUNTY SURVEYOR'S CERTIFICATE OF APPROVAL

I CERTIFY THAT THIS PLAT HAS BEEN CHECKED MATHEMATICALLY AND THAT THE PLAT CONFORMS TO THE APPLICABLE PLATTING LAWS:

APPROVED THIS 27th DAY OF Sept. 1976 A.D.

BY *Roger W. Brand*
 OLMSTED COUNTY SURVEYOR

STATE OF MINNESOTA) s.s.
 COUNTY OF OLMSTED)
 CITY OF EYOTA)

I, ROBERT LOVEJOY, CITY CLERK IN AND FOR SAID CITY OF EYOTA, DO HEREBY CERTIFY THAT ON THE 18th DAY OF 1976 A.D. THE ACCOMPANYING PLAT WAS DULY APPROVED BY THE COMMON COUNCIL OF THE CITY OF EYOTA. IN TESTIMONY THEREOF, I HAVE HEREUNTO SIGNED MY NAME AND AFFIXED THE SEAL OF SAID CITY OF EYOTA THIS DAY OF 1976 A.D.

CITY CLERK

NO DELINQUENT TAXES DUE AND TRANSFER ENTERED THIS 29th DAY OF September 1976 A.D.

Rose Browning
 COUNTY AUDITOR *Ruth Evans, Deputy*

STATE OF MINNESOTA) s.s.
 COUNTY OF OLMSTED)

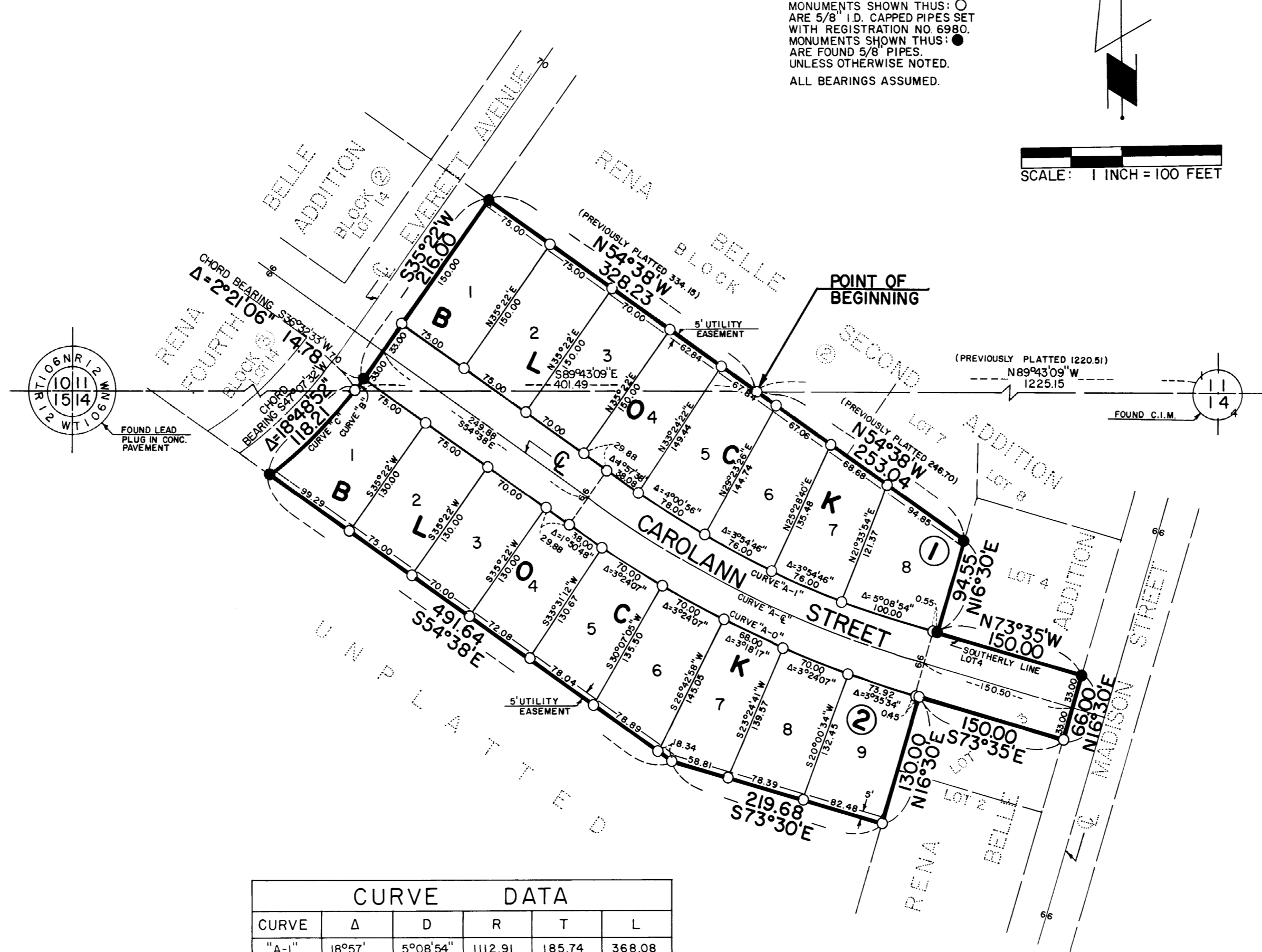
249632

FILED FOR RECORD THIS 29 DAY OF September 1976 A.D. AT 1 O'CLOCK P. M. IN BOOK OF PLATS ON PAGE
 INSTRUMENT NO.

REGISTER OF DEEDS *Catherine L. Evans, Deputy*

NOTE:
 MONUMENTS SHOWN THUS: ○
 ARE 5/8" I.D. CAPPED PIPES SET WITH REGISTRATION NO. 6980.
 MONUMENTS SHOWN THUS: ●
 ARE FOUND 5/8" PIPES, UNLESS OTHERWISE NOTED.
 ALL BEARINGS ASSUMED.

SCALE: 1 INCH = 100 FEET



CURVE DATA					
CURVE	Δ	D	R	T	L
"A-1"	18°57'	5°08'54"	1112.91	185.74	368.08
"A-6"	18°57'	5°00'	1145.91	191.24	379.00
"A-0"	18°57'	4°51'36"	1178.91	196.75	389.92
"B"	2°21'06"	15°54'56"	360.00	7.39	14.78
"C"	18°48'52"	15°54'56"	360.00	59.64	118.21

ALONG THE SOUTHWESTERLY LINE OF SAID ADDITION, 253.04 FEET (PREVIOUSLY PLATTED 246.70 FEET) TO THE POINT OF BEGINNING CONTAINING 5.16 ACRES.

HAVE CAUSED THE SAME TO BE SURVEYED AND PLATTED AS "RENA BELLE FIFTH ADDITION," AND DO HEREBY DONATE AND DEDICATE TO THE PUBLIC FOR THE PUBLIC USE FOREVER THE STREET, AND GRANT THE EASEMENTS AS SHOWN ON THIS PLAT. IN WITNESS WHEREOF WE HAVE HEREUNTO SET OUR HANDS THIS 28 DAY OF Sept 1976 A.D.

Russell M. Pries
 RUSSELL M. PRIES *Harriet J. Pries*
 HARRIET J. PRIES

STATE OF MINNESOTA) s.s.
 COUNTY OF OLMSTED)

ON THIS 28 DAY OF Sept 1976 A.D., BEFORE ME A NOTARY PUBLIC IN AND FOR SAID COUNTY PERSONALLY APPEARED RUSSELL M. PRIES AND HARRIET J. PRIES, HIS WIFE, TO ME KNOWN TO BE THE PERSONS DESCRIBED IN AND WHO EXECUTED THE SAME AS THEIR FREE ACT AND DEED.

E. A. Steichen
 E. A. STEICHEN, Notary Public
 Eyota, Olmsted County, Minnesota
 My Commission Expires July 29, 1981

MY COMMISSION EXPIRES 19 A.D.

Albert F. Pries
 ALBERT F. PRIES *Rena B. Pries*
 RENA B. PRIES

STATE OF MINNESOTA) s.s.
 COUNTY OF OLMSTED)

ON THIS 28 DAY OF Sept 1976 A.D., BEFORE ME A NOTARY PUBLIC IN AND FOR SAID COUNTY PERSONALLY APPEARED ALBERT F. PRIES AND RENA B. PRIES, HIS WIFE, TO ME KNOWN TO BE THE PERSONS DESCRIBED IN AND WHO EXECUTED THE SAME AS THEIR FREE ACT AND DEED.

E. A. Steichen
 NOTARY PUBLIC, OLMSTED COUNTY, MINNESOTA
 MY COMMISSION EXPIRES 19 A.D.

E. A. STEICHEN, Notary Public
 Eyota, Olmsted County, Minnesota
 My Commission Expires July 29, 1981

PREPARED BY:
 MCGHIE & BETTS, INC.
 CONSULTING ENGINEERS
 ROCHESTER, MINNESOTA

UTILITY EASEMENT DEFINED:

AN UNOBSTRUCTED EASEMENT FOR THE CONSTRUCTION AND MAINTENANCE OF ALL NECESSARY OVERHEAD, UNDERGROUND, OR SURFACE PUBLIC UTILITIES INCLUDING RIGHTS TO CONDUCT DRAINAGE AND TRIMMING ON SAID EASEMENTS.

OFFICIAL COPY