

# ROSE HAVEN SUBDIVISION.

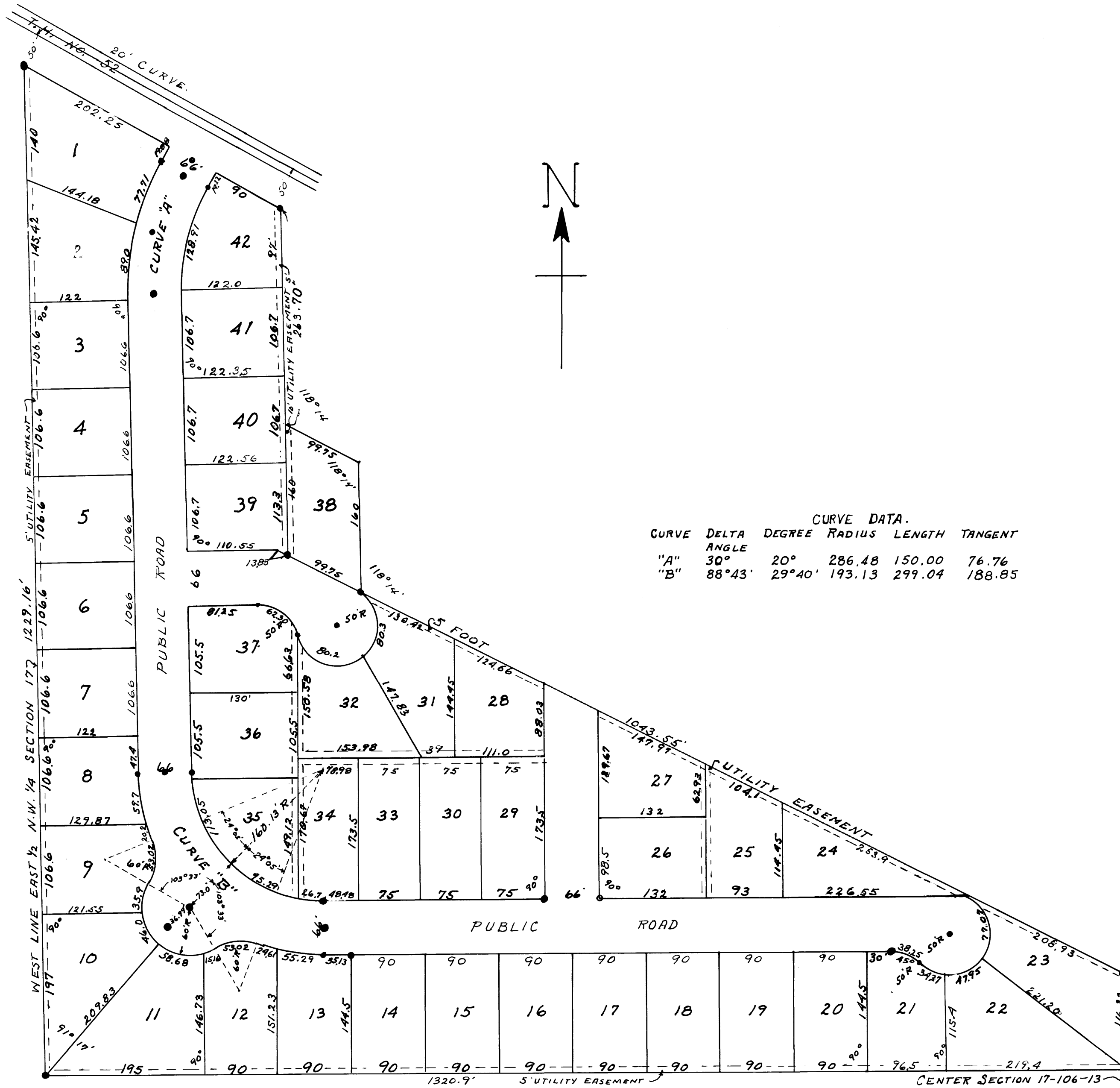
OLMSTED COUNTY, MINNESOTA.

MEASUREMENTS IN FEET AND DECIMALS.

MONUMENTS SHOWN THUS ●

SCALE 1 INCH = 100 FEET.

*John J. Kerr* 1956.  
COUNTY SURVEYOR.  
REGISTERED LAND SURVEYOR NO. 238.



APPROVED THIS 30<sup>th</sup> DAY OF AUGUST, 1956.  
MARION TOWNSHIP BOARD OF SUPERVISORS.  
*Cleo Daniels* CHAIRMAN.  
*Walt Pearson* SUPERVISOR.  
*Paul Rubin* SUPERVISOR.

APPROVED AS TO WATER SUPPLY AND SEWAGE DISPOSAL.  
*Thomas H. Hall* ENGINEER.  
ROCHESTER OLMSTED COUNTY HEALTH UNIT.  
A.C. No. 2608

## SURVEYORS CERTIFICATE.

STATE OF MINNESOTA,  
COUNTY OF OLMSTED, S. S.  
I, JOHN J. KERR DO HEREBY CERTIFY THAT AT THE REQUEST OF ROY EKBERG AND PEARL EKBERG (HIS WIFE), BENNETT N. WHYNAUCH (WIDOWER) AND WALTER ZELMER (SINGLE) OWNERS OF THE FOLLOWING DESCRIBED LANDS: COMMENCING AT THE CENTER OF SECTION 17 TOWNSHIP 106 NORTH RANGE 13 WEST FOR A PLACE OF BEGINNING AND RUNNING THENCE WEST ON THE SOUTH LINE OF THE NORTHWEST 1/4 OF SAID SECTION A DISTANCE OF 1320.9 FEET TO THE SOUTHWEST CORNER OF THE EAST 1/2 OF SAID NORTHWEST 1/4, THENCE NORTH ALONG THE WEST LINE OF SAID EAST 1/2 A DISTANCE OF 1228.62 FEET TO THE SOUTH RIGHT OF WAY LINE OF TRUNK HIGHWAY NO. 52, THENCE SOUTHEASTERLY ALONG THE SOUTH RIGHT OF WAY LINE OF TRUNK HIGHWAY NO. 52 A DISTANCE OF 358.25 FEET, THENCE SOUTH PARALLEL WITH THE EAST LINE OF SAID NORTHWEST 1/4 A DISTANCE OF 263.70 FEET, THENCE DEFLECTING TO THE LEFT 61°46' A DISTANCE OF 99.75 FEET, THENCE SOUTH PARALLEL WITH SAID EAST LINE A DISTANCE OF 160.0 FEET, THENCE SOUTHEASTERLY 1043.55 FEET TO A POINT IN THE EAST LINE OF SAID NORTHWEST 1/4, THENCE SOUTH ALONG THE EAST LINE OF SAID NORTHWEST 1/4 A DISTANCE OF 116.22 FEET TO THE PLACE OF BEGINNING, I HAVE SURVEYED AND PLATTED SAID LANDS INTO LOTS AND PUBLIC ROADS SUCH SUBDIVISION TO BE KNOWN AND DESIGNATED AS "ROSE HAVEN SUBDIVISION". I FURTHER CERTIFY THAT THE ACCOMPANYING PLAT IS A TRUE REPRESENTATION OF SAID SURVEY AS MADE, THAT MEASUREMENTS ARE SHOWN IN FEET AND DECIMALS, THAT MONUMENTS FOR THE GUIDANCE OF FUTURE SURVEYS HAVE BEEN PLACED IN THE GROUND AT THE LOCATIONS MARKED THUS ●, THAT SAID LANDS HAVE NOT HITHERTO BEEN PLATTED, THAT THERE ARE NO WET LANDS THEREON, AND THAT ANGLES OF ENCLOSURE ARE SHOWN ON SAID PLAT. DATED THIS 30<sup>th</sup> DAY OF AUGUST, 1956.

*John J. Kerr* COUNTY SURVEYOR.  
REGISTERED LAND SURVEYOR NO. 238.

SUBSCRIBED AND SWORN TO BEFORE ME A NOTARY PUBLIC THIS 30<sup>th</sup> DAY OF AUGUST, 1956.

*Glen F. Schroeder* NOTARY PUBLIC, OLMS TED COUNTY, MINNESOTA.  
MY COMMISSION EXPIRES Aug. 17, 1958.

## DEDICATION.

WE THE UNDERSIGNED ROY EKBERG AND PEARL EKBERG (HIS WIFE), BENNETT N. WHYNAUCH (WIDOWER) AND WALTER ZELMER (SINGLE) DO HEREBY CERTIFY THAT WE ARE THE OWNERS OF THE LANDS DESCRIBED IN THE FOREGOING SURVEYORS CERTIFICATE, THAT WE HAVE CAUSED THE SAME TO BE SURVEYED AND PLATTED INTO LOTS AND PUBLIC ROADS, SUCH SUBDIVISION TO BE KNOWN AND DESIGNATED AS "ROSE HAVEN SUBDIVISION" AND THAT WE DO FOR OURSELVES, OUR HEIRS, ADMINISTRATORS, EXECUTORS AND ASSIGNS HEREBY GRANT AND DEDICATE THE ROADS AS SHOWN ON THE ATTACHED PLAT TO THE PUBLIC USE AS SUCH FOREVER, IN TESTIMONY WHEREOF WE HAVE SET OUR HANDS AND SEALS THIS 30<sup>th</sup> DAY OF AUGUST, 1956.

*John Clark* WITNESS.  
*John Clark* WITNESS.  
*John Clark* WITNESS.

*Roy Ekberg* ROY EKBERG  
*Pearl Ekberg* PEARL EKBERG  
*Bennett N. Whynauch* BENNETT N. WHYNAUCH  
*Walter Zelmer* WALTER ZELMER

STATE OF MINNESOTA,  
COUNTY OF OLMS TED, S. S.  
ON THIS 30<sup>th</sup> DAY OF AUGUST, 1956 BEFORE ME A NOTARY PUBLIC IN AND FOR SAID COUNTY AND STATE PERSONALLY APPEARED ROY EKBERG AND PEARL EKBERG (HIS WIFE), BENNETT N. WHYNAUCH (WIDOWER) AND WALTER ZELMER (SINGLE) TO ME KNOWN TO BE THE PERSONS WHO EXECUTED THE FOREGOING INSTRUMENT AND ACKNOWLEDGED THAT THEY EXECUTED THE SAME AS THEIR FREE ACT AND DEED.

*W. Swan* NOTARY PUBLIC, OLMS TED COUNTY, MINNESOTA.  
MY COMMISSION EXPIRES 19...

STATE OF MINNESOTA,  
COUNTY OF OLMS TED, S. S.  
I, FRANCES L. UNDERLEAK COUNTY AUDITOR IN AND FOR SAID COUNTY DO HEREBY CERTIFY THAT THE PLAT ATTACHED WAS DULY APPROVED BY THE BOARD OF COUNTY COMMISSIONERS AT A MEETING HELD ON THIS 30<sup>th</sup> DAY OF AUGUST, 1956, IN TESTIMONY WHEREOF I HAVE SIGNED MY NAME AND AFFIXED THE SEAL OF SAID COUNTY THIS 2<sup>nd</sup> DAY OF SEPTEMBER, A.D. 1956.

*Frances L. Underleak* COUNTY AUDITOR.

TAXES PAID FOR THE YEAR OF 1955

*Karl H. Polter* COUNTY TREASURER.

TAXES PAID AND TRANSFER ENTERED THIS 10<sup>th</sup> DAY OF OCTOBER, 1956.

*Frances L. Underleak* COUNTY AUDITOR.

STATE OF MINNESOTA,  
COUNTY OF OLMS TED, S. S.  
FILED FOR RECORD THIS 11<sup>th</sup> DAY OF OCTOBER, 1956. AT 4:10-CLOCK P.M. AND RECORDED IN BOOK OF PLATS PAGE

*Register of Deeds* REGISTER OF DEEDS.