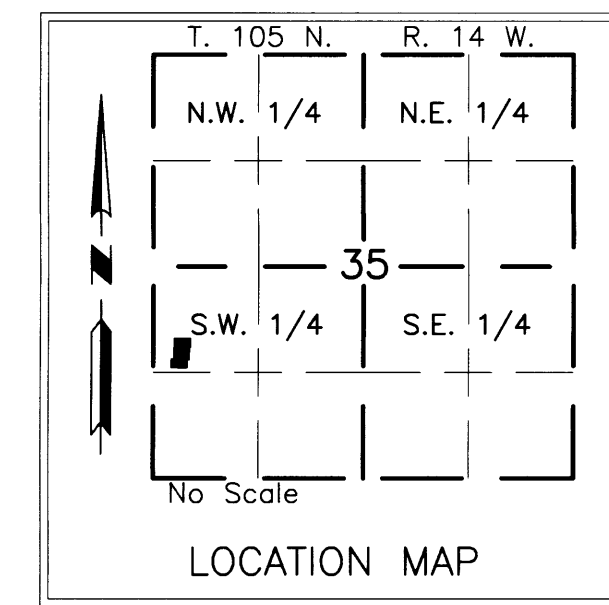


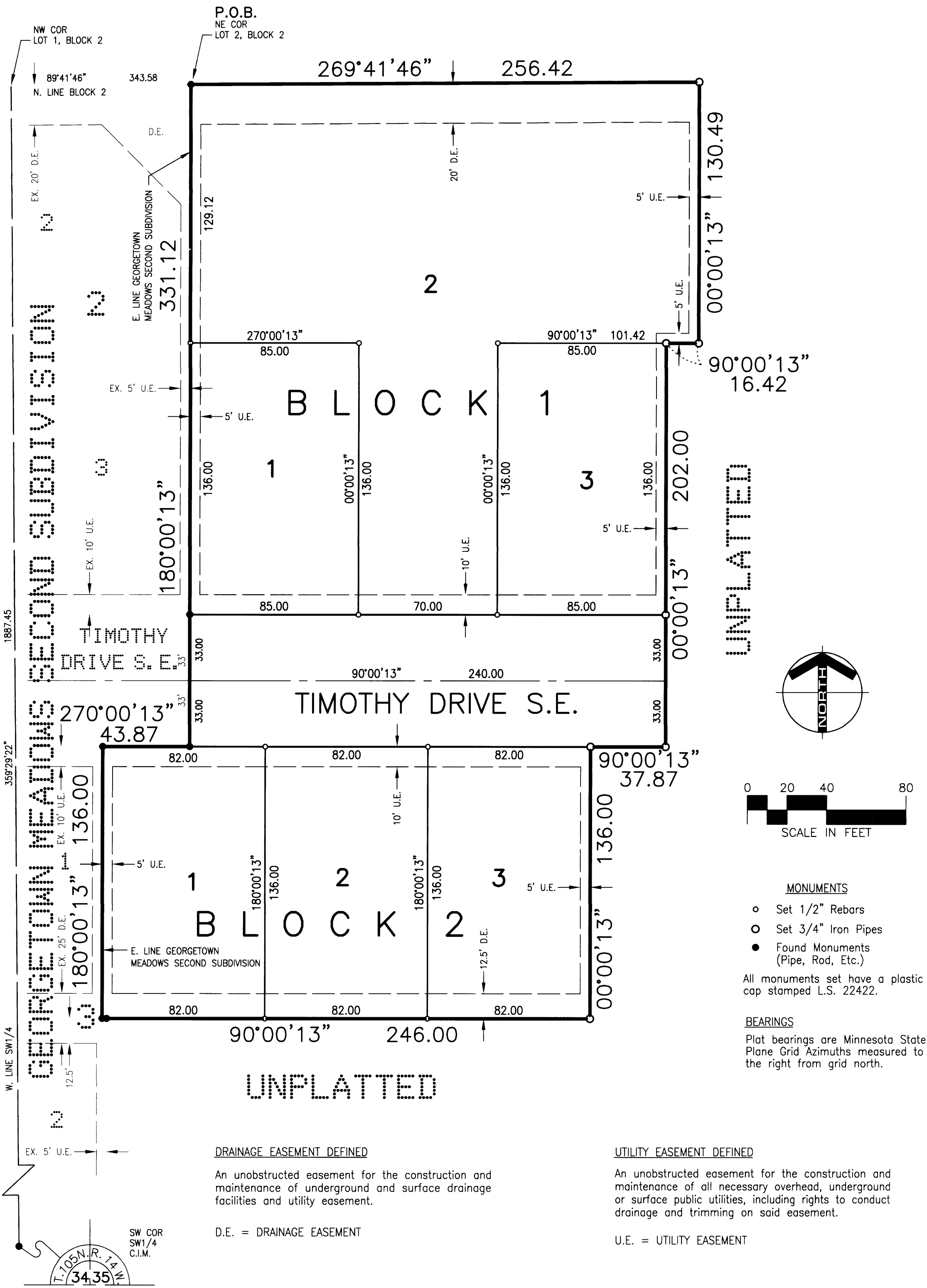
GEORGETOWN MEADOWS THIRD SUBDIVISION



ENGINEERS • ARCHITECTS
SURVEYORS • PLANNERS
LANDSCAPE ARCHITECTS
717 THIRD AVENUE SOUTHEAST
ROCHESTER, MINNESOTA 55904
507-288-6464
FAX 507-288-3038
EMAIL INFO@YAGGY.COM



UNPLATTED



INSTRUMENT OF DEDICATION

KNOW ALL MEN BY THESE PRESENTS: That Beach Properties Inc., a Minnesota Corporation, and George H. Beach and Darlene A. Beach, husband and wife, owners and proprietors of the following described property situated in the County of Olmsted, State of Minnesota, to wit:

That part of the Northwest Quarter of the Southwest Quarter of Section 35, Township 105 North, Range 14 West, Olmsted County, Minnesota, described as follows:

Commencing at the southwest corner of said Southwest Quarter; thence northerly on a Minnesota State Plane Grid Azimuth from north of 359 degrees 29 minutes 22 seconds along the west line of said Southwest Quarter 1887.45 feet to the northwest corner of Lot 1, Block 2 of GEORGETOWN MEADOWS SECOND SUBDIVISION, according to the plat thereof on file at the County Recorder's office, Olmsted County, Minnesota; thence easterly 89 degrees 41 minutes 46 seconds azimuth along the north line of said Block 2, a distance of 343.58 feet to the northeast corner of Lot 2 of said Block 2 and the point of beginning; thence southerly 180 degrees 00 minutes 13 seconds azimuth along the east line of said GEORGETOWN MEADOWS SECOND SUBDIVISION 331.12 feet; thence westerly 270 degrees 00 minutes 13 seconds azimuth along said east line 43.87 feet; thence southerly 180 degrees 00 minutes 13 seconds azimuth along said east line 136.00 feet; thence easterly 90 degrees 00 minutes 13 seconds azimuth 246.00 feet; thence northerly 00 degrees 00 minutes 13 seconds azimuth 136.00 feet; thence easterly 90 degrees 00 minutes 13 seconds azimuth 136.00 feet; thence easterly 90 degrees 00 minutes 13 seconds azimuth 136.00 feet; thence northerly 00 degrees 00 minutes 13 seconds azimuth 202.00 feet; thence westerly 269 degrees 41 minutes 46 seconds azimuth 256.42 feet to the point of beginning.

Said tract contains 2.65 acres more or less.

Have caused the same to be surveyed and platted as GEORGETOWN MEADOWS THIRD SUBDIVISION and do hereby donate and dedicate to the public for public use forever the thoroughfares and also dedicate the easements as shown on this plat, for utility purposes only.

In witness whereof, said Beach Properties Inc., a Minnesota Corporation, has caused these presents to be signed by its proper officer this 17 day of Dec, 2001

Eugene M. Miller
Eugene M. Miller
Vice President

STATE OF MINNESOTA
COUNTY OF OLMSTED

The foregoing instrument was acknowledged before me this 17 day of Dec, 2001, by Eugene M. Miller, Vice President of Beach Properties Inc., a Minnesota Corporation, on behalf of the corporation.

Robert J. Hendon
Notary Public, Olmsted County, MN
My Commission Expires 1-31-05

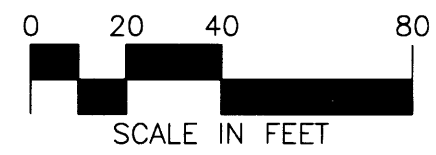
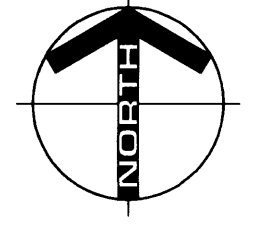
In witness whereof, said George H. Beach and Darlene A. Beach, husband and wife, have hereunto set their hands this 17 day of Dec, 2001.

George H. Beach
George H. Beach
Darlene A. Beach
Darlene A. Beach

STATE OF MINNESOTA
COUNTY OF OLMSTED

The foregoing instrument was acknowledged before me this 17 day of Dec, 2001, by George H. Beach and Darlene A. Beach, husband and wife.

Robert J. Hendon
Notary Public, Olmsted County, MN
My Commission Expires 1-31-05



- #### MONUMENTS
- Set 1/2" Rebars
 - Set 3/4" Iron Pipes
 - Found Monuments (Pipe, Rod, Etc.)

All monuments set have a plastic cap stamped L.S. 22422.

BEARINGS

Plat bearings are Minnesota State Plane Grid Azimuths measured to the right from grid north.

DRAINAGE EASEMENT DEFINED

An unobstructed easement for the construction and maintenance of underground and surface drainage facilities and utility easement.

D.E. = DRAINAGE EASEMENT

UTILITY EASEMENT DEFINED

An unobstructed easement for the construction and maintenance of all necessary overhead, underground or surface public utilities, including rights to conduct drainage and trimming on said easement.

U.E. = UTILITY EASEMENT

CITY APPROVAL

STATE OF MINNESOTA
COUNTY OF OLMSTED
CITY OF STEWARTVILLE

We do hereby certify that on the 11 day of December, 2001, the accompanying plat was duly approved by the Common Council of the City of Stewartville. In testimony whereof, we have hereunto signed our names this 11 day of December, 2001.

Chris Gray
Chris Gray
Mayor
Larry Hansen
Larry Hansen
Clerk-Administrator

COUNTY SURVEYOR

I certify that this plat has been checked mathematically and that the plat conforms to applicable platting laws.

This 21 day of December, 2001.

Edward P. Kuisle
Edward P. Kuisle
Olmsted County Surveyor

SURVEYOR'S CERTIFICATE

I do hereby certify that I have surveyed and platted the property described on this plat as GEORGETOWN MEADOWS THIRD SUBDIVISION; that this plat is a correct representation of said survey; that all distances are correctly shown on said plat in feet and hundredths of a foot; that all monuments have been correctly placed in the ground as shown or will be correctly placed in the ground as designated by December 1, 2002; that the outside boundary lines are correctly designated; and that there are no wetlands as defined in MS 505.02, Subd. 1, or public highways to be designated on said plat other than as shown.

Douglas G. Rude
Douglas G. Rude
Minnesota L.S. No. 22422

STATE OF MINNESOTA
COUNTY OF OLMSTED

The foregoing Surveyor's Certificate was acknowledged before me this 14 day of December, 2001, by Douglas G. Rude, L.S. No. 22422.

Luc E. Madden
Notary Public, Olmsted County, MN
My Commission Expires 1/31/2005

PROPERTY RECORDS AND LICENSING

Taxes payable in the year 2001 on the land herein described have been paid, there are no delinquent taxes and transfer has been entered this 21st day of December, 2001.

Document Number 898068

I hereby certify that this instrument was filed in the Office of Property Records and Licensing for the record on this 21st day of December, 2001, at 3 o'clock p.m. and was duly recorded in Olmsted County Records.

Daniel J. Hall
Daniel J. Hall
Olmsted County Director of
Property Records and Licensing
By Wendy von Wald Deputy

327-A

PROJECT NUMBER: 7618
COMPUTER FILE: 7618 S FNPL 01.dwg
DATE: 12-14-01
DRAFTSPERSON: F.J.G.