

HORIHAN'S FIRST SUBDIVISION

ROCHESTER, MINNESOTA

OWNER'S DEDICATION - CONT'D
NORTHWESTERN NATIONAL BANK (MORTGAGEE FOR CYRIL R. HORIHAN AND ARDIS J. HORIHAN)

M.O. Anderson
M.O. ANDERSON, ASST. VICE-PRESIDENT
STATE OF MINNESOTA) S.S.
COUNTY OF OLMSTED)

Mary Kubiawicz
MARY KUBIATOWICZ, ASST. VICE-PRESIDENT
STATE OF MINNESOTA) S.S.
COUNTY OF OLMSTED)

Laurie J. Lambuth
NOTARY PUBLIC, OLMSTED COUNTY, MINNESOTA MY COMMISSION EXPIRES _____ 19__ A.D.

SURVEYOR'S CERTIFICATE

STATE OF MINNESOTA) S.S.
COUNTY OF OLMSTED)

I DO HEREBY CERTIFY THAT I HAVE SURVEYED AND PLATTED THE PROPERTY DESCRIBED ON THIS PLAT AS "HORIHAN'S FIRST SUBDIVISION"; THAT THIS IS A CORRECT REPRESENTATION OF SAID SURVEY; THAT ALL DISTANCES ARE CORRECTLY SHOWN ON SAID PLAT IN FEET AND DECIMALS OF A FOOT; THAT ALL MONUMENTS HAVE BEEN CORRECTLY PLACED IN THE GROUND AS SHOWN ON THE PLAT; THAT THE OUTSIDE BOUNDARY LINES ARE CORRECTLY DESIGNATED ON THE PLAT; THAT THERE ARE NO WET LANDS OTHER THAN AS SHOWN THEREON; AND THAT THE SAID PLAT HAS NOT BEEN PREVIOUSLY PLATTED.

Douglas N. Betts
DOUGLAS N. BETTS, P.E. & R.L.S.
MINNESOTA REGISTRATION NO. 6980

STATE OF MINNESOTA) S.S.
COUNTY OF OLMSTED)

THE ABOVE SURVEYOR'S CERTIFICATE WAS SUBSCRIBED AND SWORN TO BEFORE ME, A NOTARY PUBLIC WITHIN AND FOR SAID COUNTY AND STATE ON THIS 29 DAY OF Nov. 19 74 A.D.

Edward E. Holt
NOTARY PUBLIC, OLMSTED COUNTY, MINNESOTA
MY COMMISSION EXPIRES _____ 19__ A.D.

COUNTY SURVEYOR'S CERTIFICATE OF APPROVAL

I CERTIFY THAT THIS PLAT HAS BEEN CHECKED MATHEMATICALLY AND THAT THE PLAT CONFORMS TO THE APPLICABLE PLATTING LAWS.

APPROVED THIS 4th DAY OF Dec. 19 74 A.D.

BY Roger W. Brand
OLMSTED COUNTY SURVEYOR

WE, THE MEMBERS OF THE TOWNSHIP BOARD OF SUPERVISORS FOR ROCHESTER TOWNSHIP, OLMSTED COUNTY, MINNESOTA, DO HEREBY CERTIFY THAT WE HAVE APPROVED THE ACCOMPANYING PLAT. IN TESTIMONY WHEREOF, WE HAVE SIGNED OUR NAMES THIS 10 DAY OF Dec. 19 74 A.D.

H. L. Smith
SUPERVISOR

B. J. Smith
SUPERVISOR

Am. J. Smith
CHAIRMAN

WE, THE MEMBERS OF THE OLMSTED COUNTY PLANNING ADVISORY COMMISSION, DO HEREBY CERTIFY THAT WE HAVE EXAMINED THE PLAT AS SHOWN, AND FIND THAT IT CONFORMS TO THE PROVISIONS OF THE SUBDIVISION ORDINANCE OF THE COUNTY OF OLMSTED.

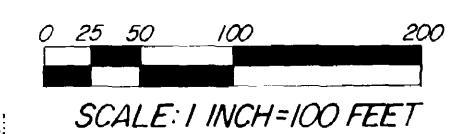
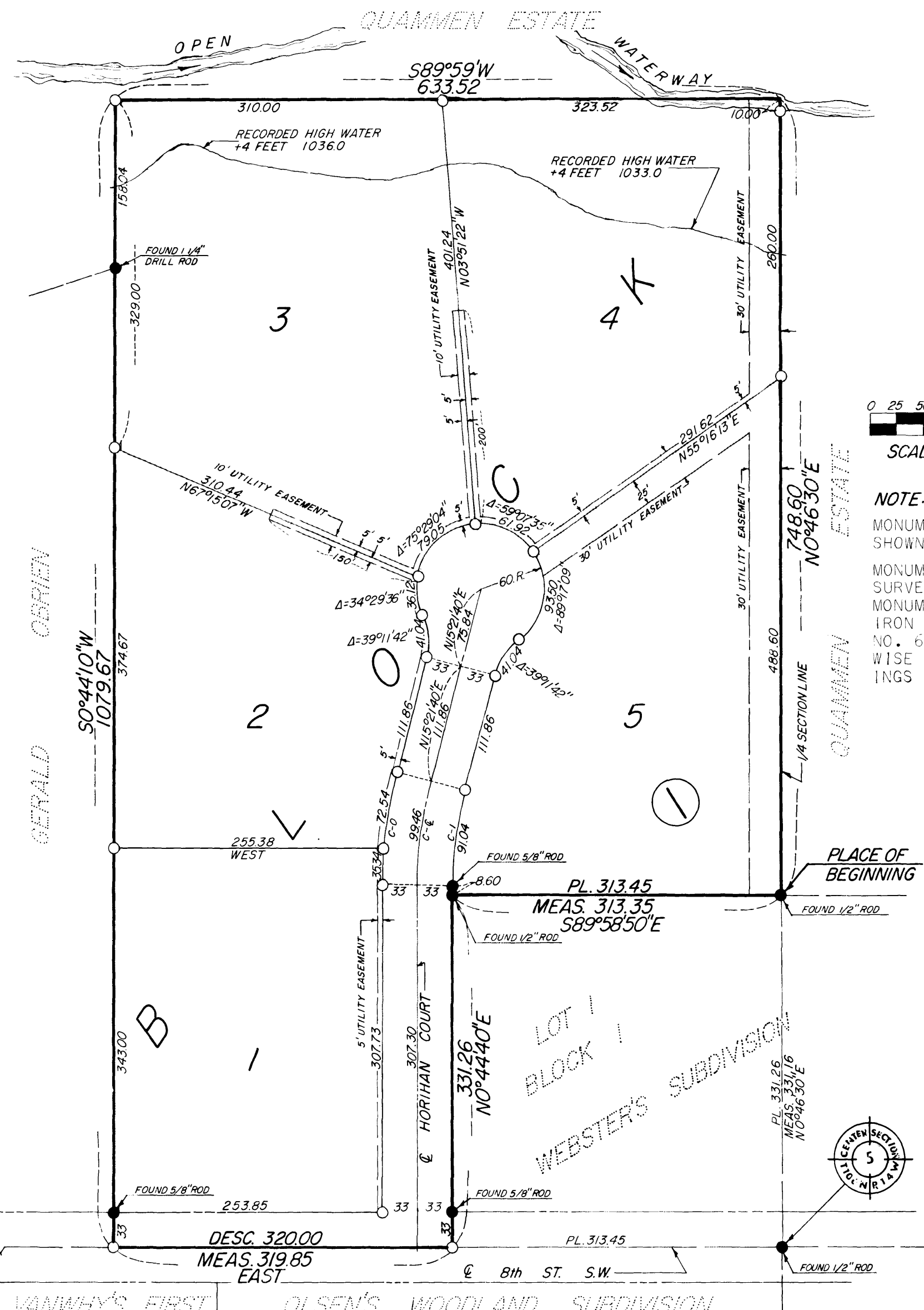
Richard E. Brennan
COMMISSION CHAIRMAN

APPROVED BY THE OLMSTED COUNTY HIGHWAY DEPARTMENT:

Lele Schellhammer
COUNTY ENGINEER

I HEREBY APPROVE THIS PLAT AS TO WATER SUPPLY AND SEWAGE DISPOSAL WITH THE STIPULATION THAT THE LOTS CAN NOT BE SUBDIVIDED UNLESS PUBLIC SEWER IS AVAILABLE

William P. Hoff
PUBLIC HEALTH ENGINEER
OLMSTED COUNTY DEPARTMENT OF HEALTH



NOTE:
MONUMENTS FOUND IN PLACE SHOWN THUS: ●
MONUMENTS SET IN THIS SURVEY SHOWN THUS: ○
MONUMENTS SET ARE 5/8" IRON PIPE WITH CAP NO. 6980 UNLESS OTHERWISE NOTED. ALL BEARINGS ASSUMED.

CURVE	Δ	R	D	L	T
C-0	14°37'	422.86	13°22'58"	107.88	54.23
C-E	14°33'	389.86	14°41'42"	99.46	50.00
C-1	14°33'	356.86	16°03'20"	91.04	45.77

B.M. ELEV. 1061.72
U.S.G.S. DATUM
TOP OF NO. END OF 36" CULVERT
ON 8th ST. SW. 45' EAST OF
S.E. CORNER OF HORIHAN'S
FIRST SUBDIVISION.

UTILITY EASEMENT DEFINED: AN UNOBSTRUCTED EASEMENT FOR THE CONSTRUCTION AND MAINTENANCE OF ALL NECESSARY OVERHEAD, UNDERGROUND OR SURFACE PUBLIC UTILITIES INCLUDING RIGHTS TO CONDUCT DRAINAGE AND TRIMMING ON SAID EASEMENT.

OWNER'S DEDICATION

KNOW ALL MEN BY THESE PRESENTS:

THAT CYRIL R. HORIHAN AND ARDIS J. HORIHAN, HIS WIFE, AND THE NORTHWESTERN NATIONAL BANK, OWNERS AND PROPRIETORS OF THE FOLLOWING DESCRIBED PROPERTY SITUATED IN THE COUNTY OF OLMSTED, STATE OF MINNESOTA, TO WIT:

A PART OF THE EAST 30 RODS OF THE NORTHWEST QUARTER (NW 1/4) OF SECTION 5, TOWNSHIP 106 NORTH, RANGE 14 WEST, DESCRIBED AS FOLLOWS:

COMMENCING AT THE SOUTHEAST CORNER OF SAID NORTHWEST QUARTER; THENCE NORTH 00 DEGREES 46 MINUTES 30 SECONDS EAST, ASSUMED BEARING, ALONG THE EAST LINE OF SAID NORTHWEST QUARTER A DISTANCE OF 331.16 FEET TO A POINT IN THE NORTH LINE OF WEBSTER'S SUBDIVISION FOR A PLACE OF BEGINNING; THENCE CONTINUE NORTH 00 DEGREES 46 MINUTES 30 SECONDS EAST FOR 74° 60 FEET; THENCE SOUTH 89 DEGREES 59 MINUTES WEST, 633.52 FEET; THENCE SOUTH 00 DEGREES 44 MINUTES 10 SECONDS WEST, 1079.67 FEET; THENCE DUE EAST, 319.85 FEET PREVIOUSLY DESCRIBED AS 320.00 FEET; THENCE NORTH 00 DEGREES 44 MINUTES 40 SECONDS EAST ALONG THE WEST LINE OF LOT 1 BLOCK 1 OF WEBSTER'S SUBDIVISION, 331.26 FEET; THENCE SOUTH 89 DEGREES 54 MINUTES 50 SECONDS EAST ALONG THE NORTH LINE OF SAID SUBDIVISION, 313.35 FEET, PREVIOUSLY PLATTED AS 313.45 FEET, TO THE PLACE OF BEGINNING.

CONTAINING 13.30 ACRES.

HAVE CAUSED THE SAME TO BE SURVEYED AND PLATTED AS "HORIHAN'S FIRST SUBDIVISION", AND DO HEREBY DONATE AND DEDICATE TO THE PUBLIC, FOR THE PUBLIC USE FOREVER, THE HIGHWAY RIGHT OF WAYS SHOWN THEREON, AND GRANT THE EASEMENT DEFINED THEREON. IN WITNESS WHEREOF WE HAVE HEREUNTO SET OUR HANDS THIS 7 DAY OF January 19 75 A.D.

Cyril R. Horihan AND Ardis J. Horihan
CYRIL R. HORIHAN AND ARDIS J. HORIHAN

STATE OF MINNESOTA) S.S.
COUNTY OF OLMSTED)

ON THIS 7 DAY OF January 19 75 A.D., BEFORE ME A NOTARY PUBLIC IN AND FOR SAID COUNTY PERSONALLY APPEARED CYRIL R. HORIHAN AND ARDIS J. HORIHAN, HIS WIFE, TO ME KNOWN TO BE THE PERSONS DESCRIBED IN AND WHO EXECUTED THE SAME AS THEIR FREE ACT AND DEED.

Laurie J. Lambuth
NOTARY PUBLIC, OLMSTED COUNTY, MINNESOTA

MY COMMISSION EXPIRES _____ 19__ A.D.

STATE OF MINNESOTA) S.S.
COUNTY OF OLMSTED)

I, ROSS E. BROWNING, COUNTY AUDITOR FOR SAID COUNTY, DO HEREBY CERTIFY THAT THE ANNEXED PLAT WAS DULY APPROVED BY THE BOARD OF COUNTY COMMISSIONERS AT A MEETING HELD ON THE 7th DAY OF January 19 75 A.D. IN TESTIMONY WHEREOF I HAVE SIGNED MY NAME AND AFFIXED THE SEAL OF SAID COUNTY THIS 9th DAY OF January 19 75 A.D.

Ross Browning
COUNTY AUDITOR

NO DELINQUENT TAXES DUE AND TRANSFER ENTERED THIS 9th DAY OF January 19 75 A.D.

Ross Browning
COUNTY AUDITOR
367497

STATE OF MINNESOTA) S.S.
COUNTY OF OLMSTED)

FILED FOR RECORD THIS 6 DAY OF August 19 75 A.D. AT 11 1/2 O'CLOCK
A.M. IN BOOK _____ OF PLATS ON PAGE _____ INSTRUMENT NO. _____

Harry J. Evans
REGISTER OF DEEDS
Lewis Johnston, deputy

OFFICIAL PLAT

PREPARED BY:
McGHEE & BETTS, INC.
CONSULTING ENGINEERS
ROCHESTER, MINNESOTA