

DEDICATION:

KNOW ALL MEN BY THESE PRESENTS: that Julius A. Zillgitt and Ruth M. Zillgitt, his wife, Benjamin R. Hippe and Ruth A. Hippe, his wife, The First National Bank of Rochester, Minnesota, a corporation, and The Federal Land Bank of Saint Paul, a corporation, owners and proprietors of the following described property situated in the County of Olmsted, State of Minnesota, to-wit:

That part of the Northeast Quarter of Section 26, Township 108 North, Range 14 West of the Fifth Principal Meridian lying northerly and easterly of the Zumbro River, the South Half of the Southeast Quarter of Section 23, Township 108 North, Range 14 West of the Fifth Principal Meridian and a part of the North Half of the Northwest Quarter of Section 25, Township 108 North, Range 14 West of the Fifth Principal Meridian described by metes and bounds as follows:

Beginning at the northwest corner of said Section 25; thence on an assumed bearing of South 01 degrees 37 minutes 04 seconds East along the west line of said Section 25 a distance of 467.68 feet; thence South 62 degrees 31 minutes 36 seconds East a distance of 60.57 feet; thence easterly a distance of 117.13 feet along a tangential curve concave to the north having a radius of 140.62 feet and a central angle of 47 degrees 43 minutes 27 seconds; thence North 69 degrees 44 minutes 57 seconds East, tangent to said curve, a distance of 201.47 feet; thence easterly a distance of 216.54 feet along a tangential curve concave to the south having a radius of 553.87 feet and a central angle of 22 degrees 24 minutes 02 seconds; thence South 87 degrees 51 minutes 02 seconds East, tangent to said curve, a distance of 287.91 feet; thence southeasterly a distance of 218.08 feet along a tangential curve concave to the southwest having a radius of 414.97 feet and a central angle of 30 degrees 06 minutes 39 seconds; thence South 57 degrees 44 minutes 23 seconds East, tangent to said curve, a distance of 389.06 feet; thence easterly a distance of 391.26 feet along a tangential curve concave to the north having a radius of 487.87 feet and a central angle of 45 degrees 56 minutes 57 seconds; thence North 76 degrees 18 minutes 40 seconds East, tangent to said curve, a distance of 441.92 feet; thence easterly a distance of 230.05 feet along a tangential curve concave to the south having a radius of 241.35 feet and a central angle of 54 degrees 36 minutes 47 seconds; thence South 49 degrees 04 minutes 33 seconds East, tangent to said curve, a distance of 31.87 feet; thence southeasterly a distance of 162.90 feet along a tangential curve concave to the northeast having a radius of 294.40 feet and a central angle of 31 degrees 42 minutes 11 seconds; thence South 80 degrees 46 minutes 44 seconds East, tangent to said curve, a distance of 46.89 feet to a point in the east line of the Northwest Quarter of said Section 25, said point being 836.06 feet south of the northeast corner of the Northwest Quarter of said Section 25; thence South 00 degrees 47 minutes 14 seconds East, along said east line, a distance of 67.02 feet; thence North 80 degrees 46 minutes 44 seconds West a distance of 58.53 feet; thence northwesterly a distance of 199.42 feet along a tangential curve concave northeasterly having a radius of 360.40 feet and a central angle of 31 degrees 42 minutes 11 seconds; thence North 49 degrees 04 minutes 33 seconds West, tangent to said curve, a distance of 31.87 feet; thence westerly a distance of 167.14 feet along a tangential curve concave to the south having a radius of 175.35 feet and a central angle of 54 degrees 36 minutes 47 seconds; thence South 76 degrees 18 minutes 40 seconds West, tangent to said curve, a distance of 441.92 feet; thence westerly a distance of 444.19 feet along a tangential curve concave to the north having a radius of 553.87 feet and a central angle of 45 degrees 56 minutes 57 seconds; thence North 57 degrees 44 minutes 23 seconds West, tangent to said curve, a distance of 389.06 feet; thence northwesterly a distance of 183.40 feet along a tangential curve concave to the southwest having a radius of 348.97 feet and a central angle of 30 degrees 06 minutes 39 seconds; thence North 87 degrees 51 minutes 02 seconds West, tangent to said curve, a distance of 287.91 feet; thence westerly a distance of 190.74 feet along a tangential curve concave to the south having a radius of 487.87 feet and a central angle of 22 degrees 24 minutes 02 seconds; thence South 69 degrees 44 minutes 57 seconds West, tangent to said curve, a distance of 201.47 feet; thence westerly a distance of 172.11 feet along a tangential curve concave to the north having a radius of 206.62 feet and a central angle of 47 degrees 43 minutes 27 seconds; thence North 62 degrees 31 minutes 36 seconds West, tangent to said curve, a distance of 23.85 feet to a point in the west line of the Northwest Quarter of said Section 25; thence South 01 degrees 37 minutes 04 seconds East, along said west line of said Section 25, a distance of 2,066.74 feet to the southwest corner of the Northwest Quarter of said Section 25; thence South 89 degrees 38 minutes 01 seconds West, along the south line of the Northeast Quarter of said Section 26, a distance of 1,012 feet, more or less, to the shoreline of the Zumbro River; thence northerly and westerly, along said shoreline, to the intersection with the west line of the said Northeast Quarter of said Section 26; thence North 00 degrees 42 minutes 32 seconds West, along said west line, a distance of 938 feet, more or less, to the northwest corner of the said Northeast Quarter of said Section 26; thence North 00 degrees 33 minutes 33 seconds West, along the west line of the Southeast Quarter of said Section 23, a distance of 1,309.79 feet to the northwest corner of the south half of the said Southeast Quarter of said Section 23; thence North 89 degrees 42 minutes 07 seconds East, along the north line of the said south half of the Southeast Quarter of said Section 23, a distance of 2,609.06 feet to the Northeast corner of the said south half of the Southeast Quarter of said Section 23; thence South 00 degrees 26 minutes 18 seconds East, along the east line of the said south half of the Southeast Quarter of said Section 23, a distance of 1,311.55 feet to the point of beginning.

have caused the same to be surveyed and platted as EVERGREEN ACRES SUBDIVISION, Olmsted County, Minnesota, and do hereby donate and dedicate to the public for public use forever the streets, roads, lanes, etc., as shown on the plat, and grant the easements defined thereon. In witness whereof we have hereunto set our hands and seal this 27th day of June, 1975 A.D.

Julius A. Zillgitt, Ruth M. Zillgitt (wife), Benjamin R. Hippe, Ruth A. Hippe (wife)

The First National Bank of Rochester, Minnesota, Federal Land Bank of Saint Paul, Robert Hall (Vice President), Harold Sorensen (Assistant Secretary)

Notary Public David T. Bishop, My Commission expires [blank]

Notary Public Doris Mulholland, My Commission expires May 9, 1980

Notary Public M. S. Lapree, My Commission expires 2-7-1981

Notary Public R. Norenberg, My Commission expires [blank]

UTILITY EASEMENTS DEFINED: An unobstructed easement for the construction and maintenance of all necessary underground or surface, public and private utilities including rights to conduct drainage and trimming on said easement.

Surveyor's Certificate: I do hereby certify that I have surveyed and platted the property described on this plat as EVERGREEN ACRES SUBDIVISION, Olmsted County, Minnesota, that this plat is a correct representation of said survey; that all distances are correctly shown on said plat in feet and decimals of a foot; that all monuments have been correctly placed in the ground as shown on the plat; that the outside boundary lines are correctly designated on the plat; and that there are no wet lands or public highways to be designated on said plat other than as shown thereon.

Surveyor Richard Kastler, Minn. Registration No. 6405

The above Surveyor's Certificate was subscribed and sworn to before me, a Notary Public within and for said County and State on this 30th day of June, 1975 A.D.

Notary Public Vernon E. Volstad, My Commission expires Sep. 27, 1978

We, the members of the Township Board of Supervisors for Oronoco Township, Olmsted County, Minnesota, do hereby certify that we have approved the accompanying plat. In testimony whereof, we have signed our names this 7 day of July, 1975 A.D.

Supervisors: Bob Koenig, Duane Koenig, Alfred Theel

We, the members of the Olmsted County Planning Advisory Commission do hereby certify that we have examined the plat as shown, and find that it conforms to the provisions of the Subdivision Ordinance of the County of Olmsted.

Commission Chairman W. J. Brannigan, Olmsted County Highway Engineer Cele Schellhammer

I certify that this plat has been checked mathematically and that the plat conforms to the applicable platting laws. Approved this 11th day of July, 1975 A.D.

Olmsted County Surveyor Roger W. Brand, County Public Health Engineer William P. Plov

Filed for record this 21 day of August, 1975 A.D. at 1:30 O'Clock P.M. in Book [blank] of Plats on page [blank]. Register of Deeds Harry H. Evans, deputy Lewis Jonsson

I, Ross Browning, County Auditor in and for said county, do hereby certify that the annexed plat was duly approved by the Board of County Commissioners at a meeting held on the 8th day of July, 1975 A.D. In testimony whereof, I have signed my name and affixed the seal of said county, this 21st day of August, 1975 A.D.

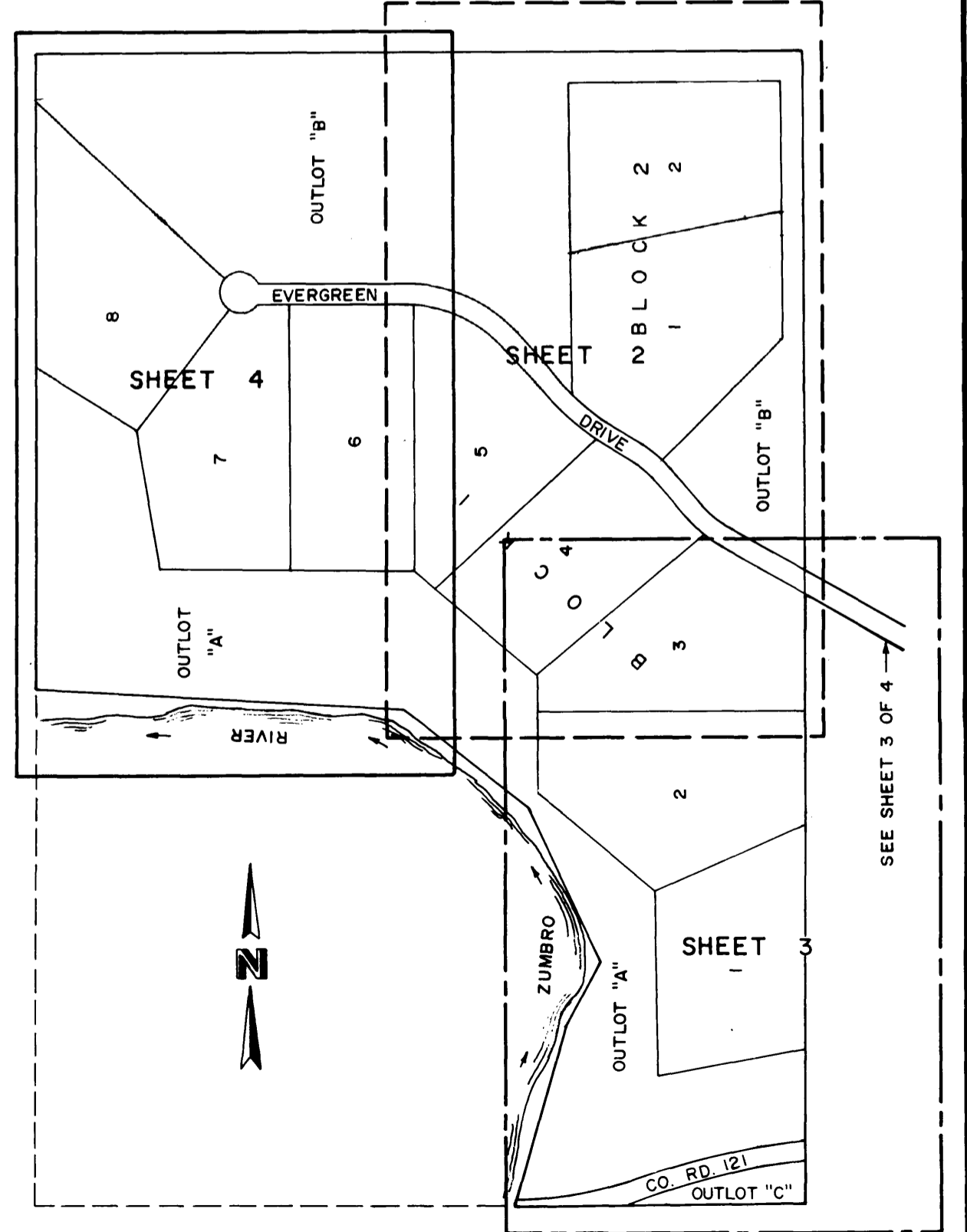
County Auditor Ross Browning, By Ruth Evans, dep.

No delinquent taxes and transfer entered. County Auditor Ross Browning, By Ruth Evans, dep.

FINAL PLAT PREPARED BY WALLACE HOLLAND KASTLER SCHMITZ & CO. CONSULTING ENGINEERS AND PLANNERS ROCHESTER, MINNESOTA

OFFICIAL PLAT

PLAT OF EVERGREEN ACRES OLMSTED COUNTY, MINNESOTA



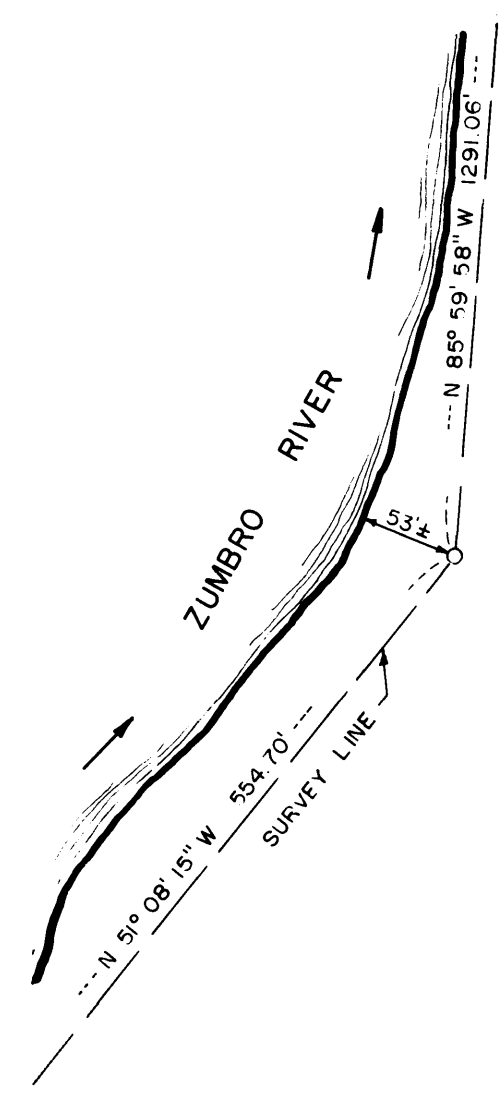
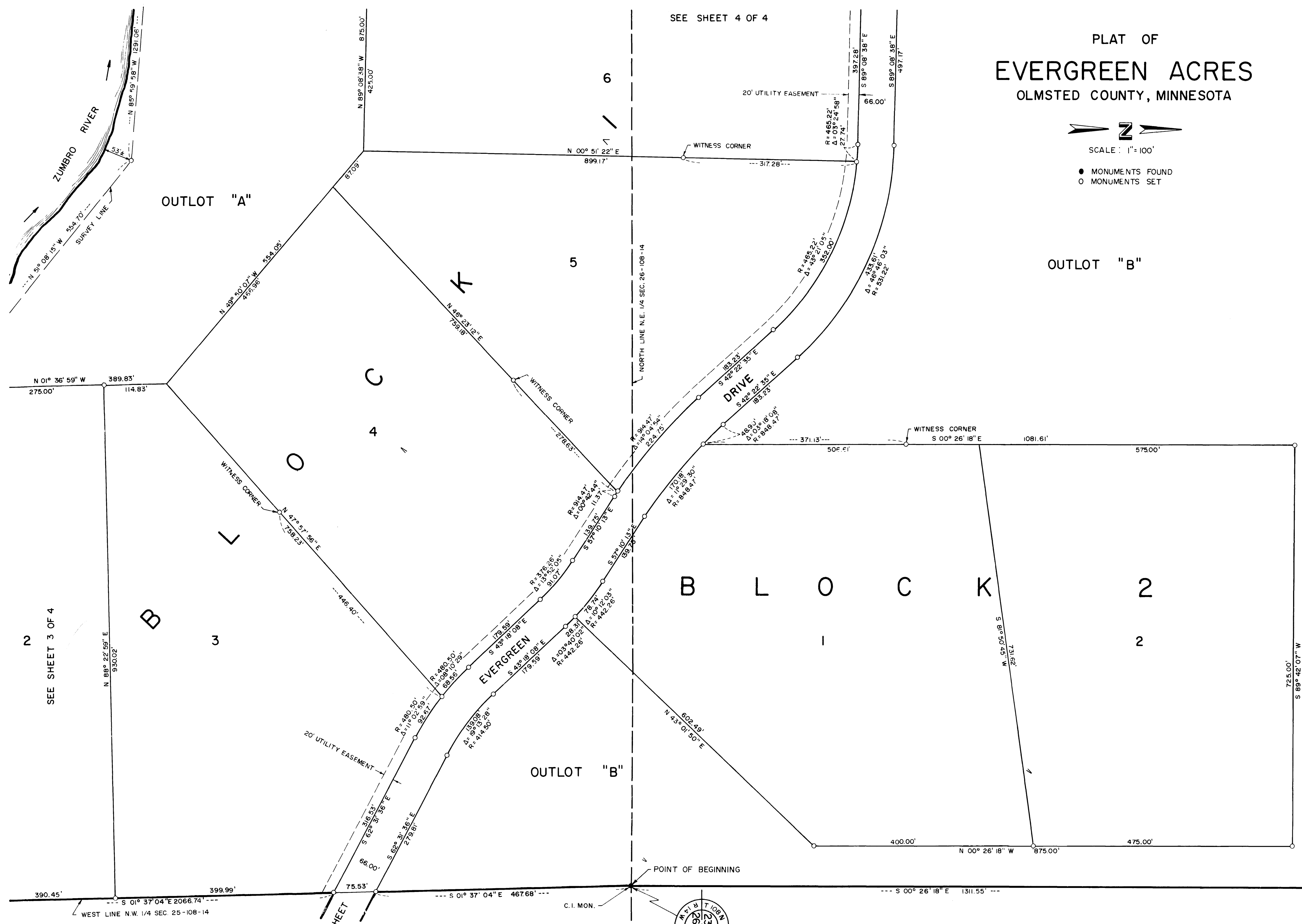
SHEET INDEX

PLAT OF
EVERGREEN ACRES
OLMSTED COUNTY, MINNESOTA



SCALE: 1"=100'

- MONUMENTS FOUND
- MONUMENTS SET

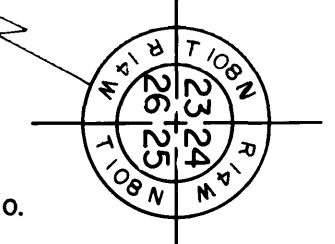


SEE SHEET 4 OF 4

SEE SHEET 3 OF 4

SEE SHEET 5 OF 4

FINAL PLAT PREPARED BY
WALLACE HOLLAND KASTLER SCHMITZ & CO.
CONSULTING ENGINEERS AND PLANNERS
ROCHESTER, MINNESOTA



SURVEY DONE BY
WALLACE HOLLAND KASTLER SCHMITZ & CO.
DESIGN BY
OTHERS

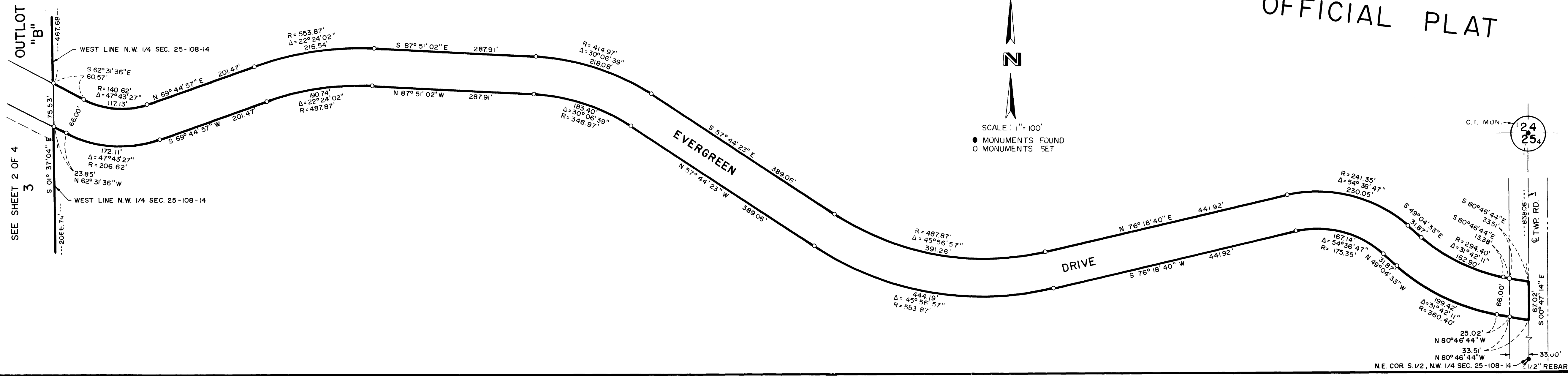
NORTH LINE S. 1/2, S.E. 1/4 SEC. 23-108-14

--- N 89° 42' 07" E 2609.06' ---

N.E. COR. S. 1/2, S.E. 1/4 SEC. 23-108-14

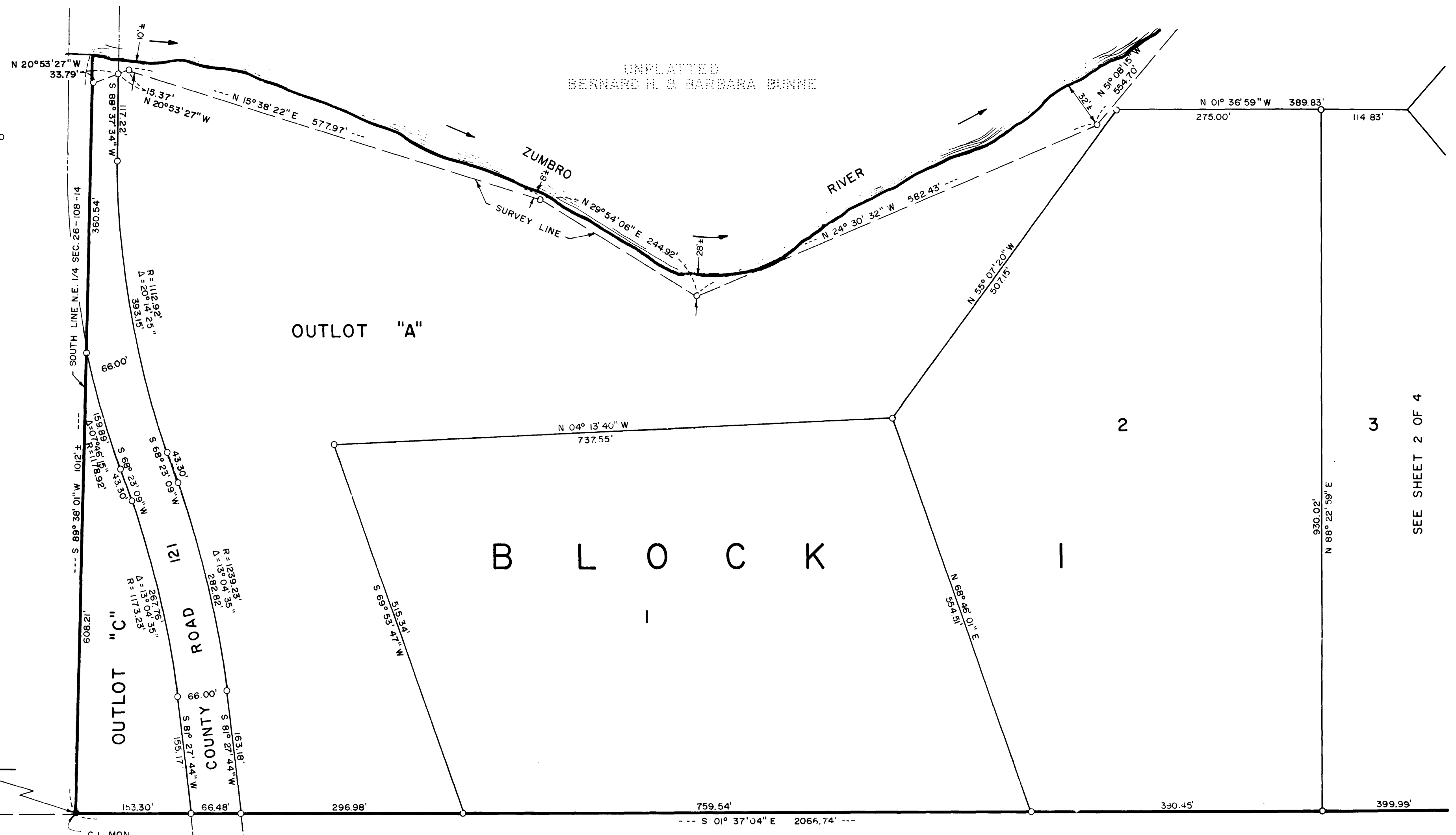
UNRELATED
RODARD L. SMITH

OFFICIAL PLAT



WATER ELEV. 915.5
MAY 23, 1975

BENCH MARK:
TOP OF BOLT ON SE. SIDE OF STEEL
PIERHEAD ON SOUTH SIDE OF WEST
END OF STEEL BRIDGE OVER ZUMBRO
RIVER 0.2 MILES EAST OF CENTER
SECTION 26-108-14 ELEV. 932.56



PLAT OF EVERGREEN ACRES OLMSTED COUNTY, MINNESOTA

SURVEY DONE BY
WALLACE HOLLAND KASTLER SCHMITZ & CO.
DESIGN BY
OTHERS

