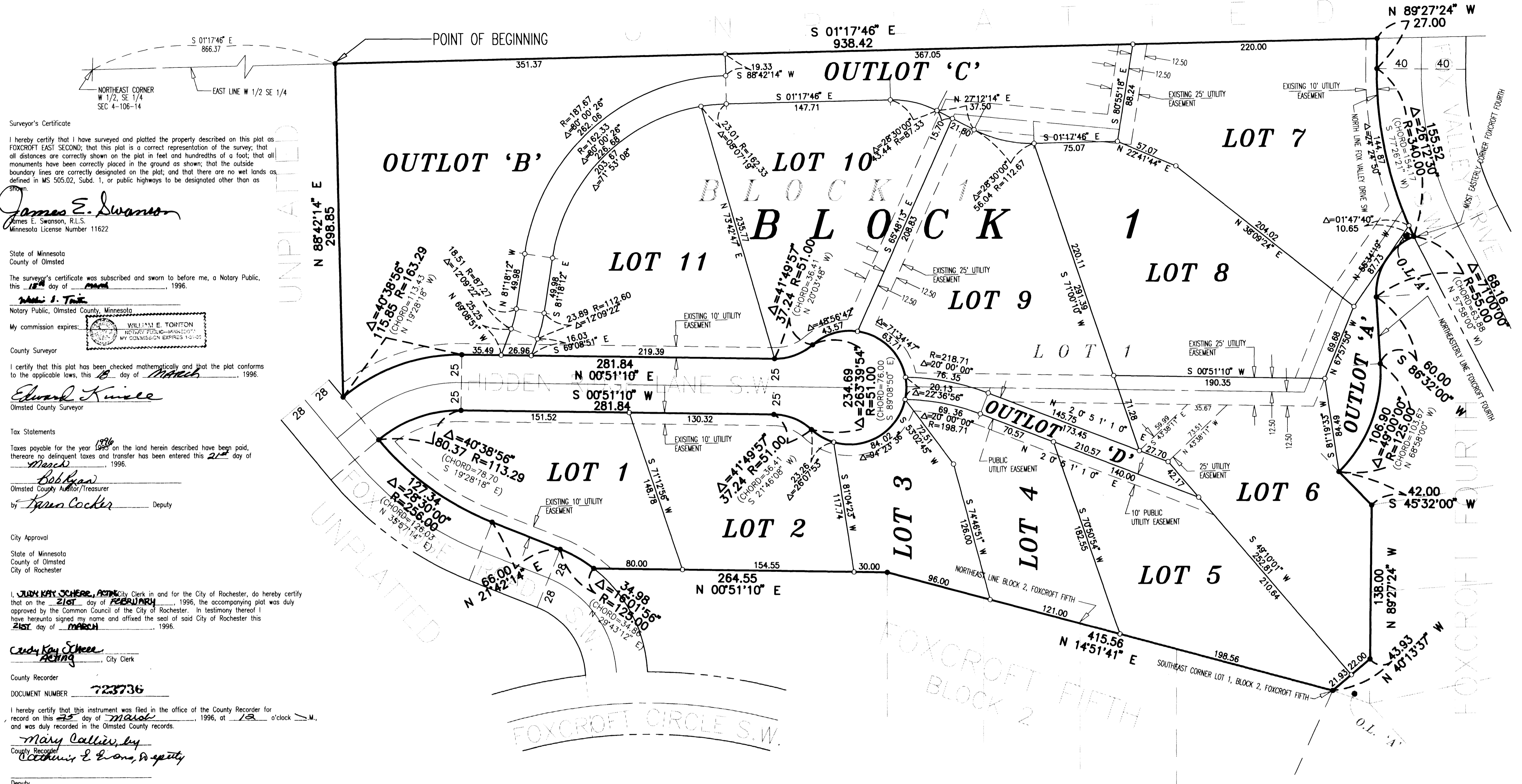


# OFFICIAL PLAT FOXCROFT EAST SECOND



Surveyor's Certificate

I hereby certify that I have surveyed and platted the property described on this plat as FOXCROFT EAST SECOND; that this plat is a correct representation of the survey; that all distances are correctly shown on the plat in feet and hundredths of a foot; that all monuments have been correctly placed in the ground as shown; that the outside boundary lines are correctly designated on the plat; and that there are no wet lands as defined in MS 505.02, Subd. 1, or public highways to be designated other than as shown.

*James E. Swanson*  
James E. Swanson, R.L.S.  
Minnesota License Number 11622

State of Minnesota  
County of Olmsted

The surveyor's certificate was subscribed and sworn to before me, a Notary Public, this 15<sup>th</sup> day of March, 1996.

*William E. Tomfont*  
Notary Public, Olmsted County, Minnesota  
My commission expires: 1-31-2000

County Surveyor

I certify that this plat has been checked mathematically and that the plat conforms to the applicable laws, this 15<sup>th</sup> day of March, 1996.

*Edward Kneile*  
Olmsted County Surveyor

Tax Statements

Taxes payable for the year 1996 on the land herein described have been paid, therefore no delinquent taxes and transfer has been entered this 21<sup>st</sup> day of March, 1996.

*Bob Ryan*  
Olmsted County Auditor/Treasurer  
by *Kevin Cocker* Deputy

City Approval

State of Minnesota  
County of Olmsted  
City of Rochester

I, *JUDY KAY SCHEER, Acting* City Clerk in and for the City of Rochester, do hereby certify that on the 21<sup>st</sup> day of FEBRUARY, 1996, the accompanying plat was duly approved by the Common Council of the City of Rochester. In testimony thereof I have hereunto signed my name and affixed the seal of said City of Rochester this 21<sup>st</sup> day of MARCH, 1996.

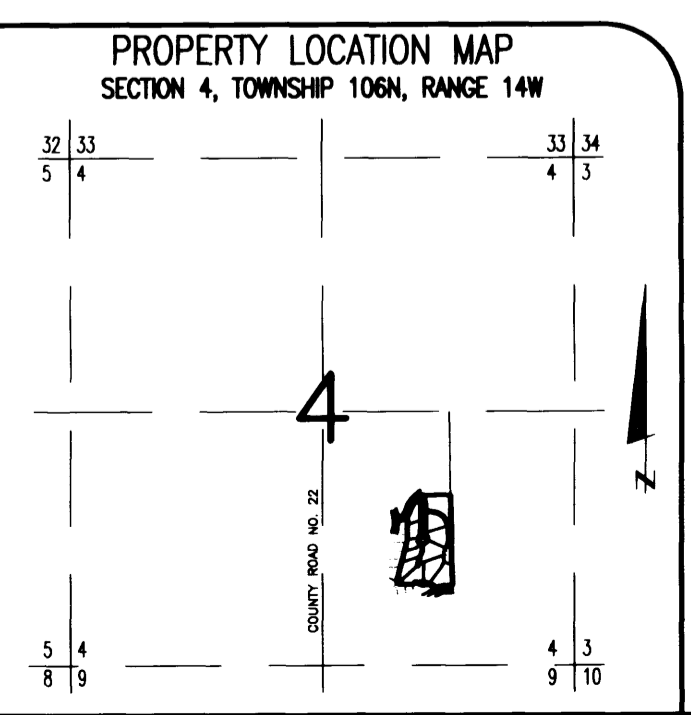
*Judy Kay Scheer, Acting*  
City Clerk

County Recorder  
DOCUMENT NUMBER 723736

I hereby certify that this instrument was filed in the office of the County Recorder for record on this 25 day of MARCH, 1996, at 12 o'clock P.M., and was duly recorded in the Olmsted County records.

*Mary Callan, by*  
County Recorder  
*William E. Tomfont, Deputy*

Deputy



Instrument of Dedication

KNOW ALL MEN BY THESE PRESENTS: That Foxcroft Corporation, a Minnesota Corporation, owner and proprietor of the following described property situated in the City of Rochester, State of Minnesota, to wit:

LOT 1, BLOCK 1, FOXCROFT EAST FIRST, Rochester, Minnesota.

Containing 9.60 acres more or less.

has caused the same to be surveyed and platted as FOXCROFT EAST SECOND and does hereby donate and dedicate to the public for the public use forever the easements as shown on this plat for drainage and utility purposes only.

In witness whereof said Foxcroft Corporation has caused these presents to be signed by its proper officer this 16 day of MARCH, 1996.

*John A. Klopp, Jr.*  
John A. Klopp, Jr., President

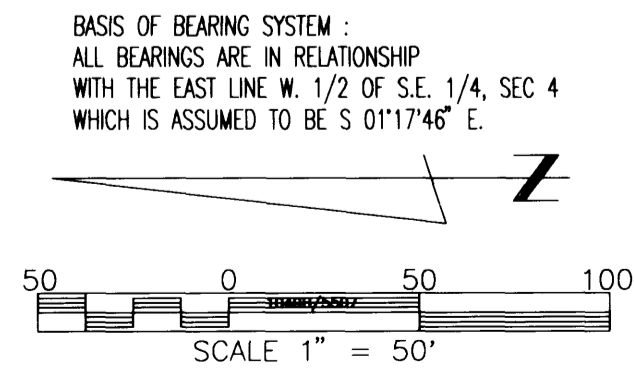
State of Minnesota  
County of Olmsted

The foregoing instrument was acknowledged before me this 15<sup>th</sup> day of MARCH, 1996, by John A. Klopp, Jr., President of Foxcroft Corporation, on behalf of the Corporation.

*Jennifer A. White*  
Notary Public, Olmsted County, Minnesota  
My commission expires January 31, 2000

NOTE:  
ALL MONUMENTS SHOWN THUS: ○  
ARE 5/8" I.D. CAPPED PIPES SET WITH REGISTRATION NO. 11622.

ALL MONUMENTS SHOWN THUS: ●  
ARE FOUND 5/8" PIPE.



UTILITY EASEMENT defined:  
An unobstructed easement for the construction and maintenance of all necessary underground and surface public utilities including rights to conduct drainage and trimming on said easement.

PREPARED BY:  
MCGHIE & BETTS, INC.  
CONSULTING ENGINEERS  
PLANNERS, LAND SURVEYORS  
ROCHESTER, MINNESOTA