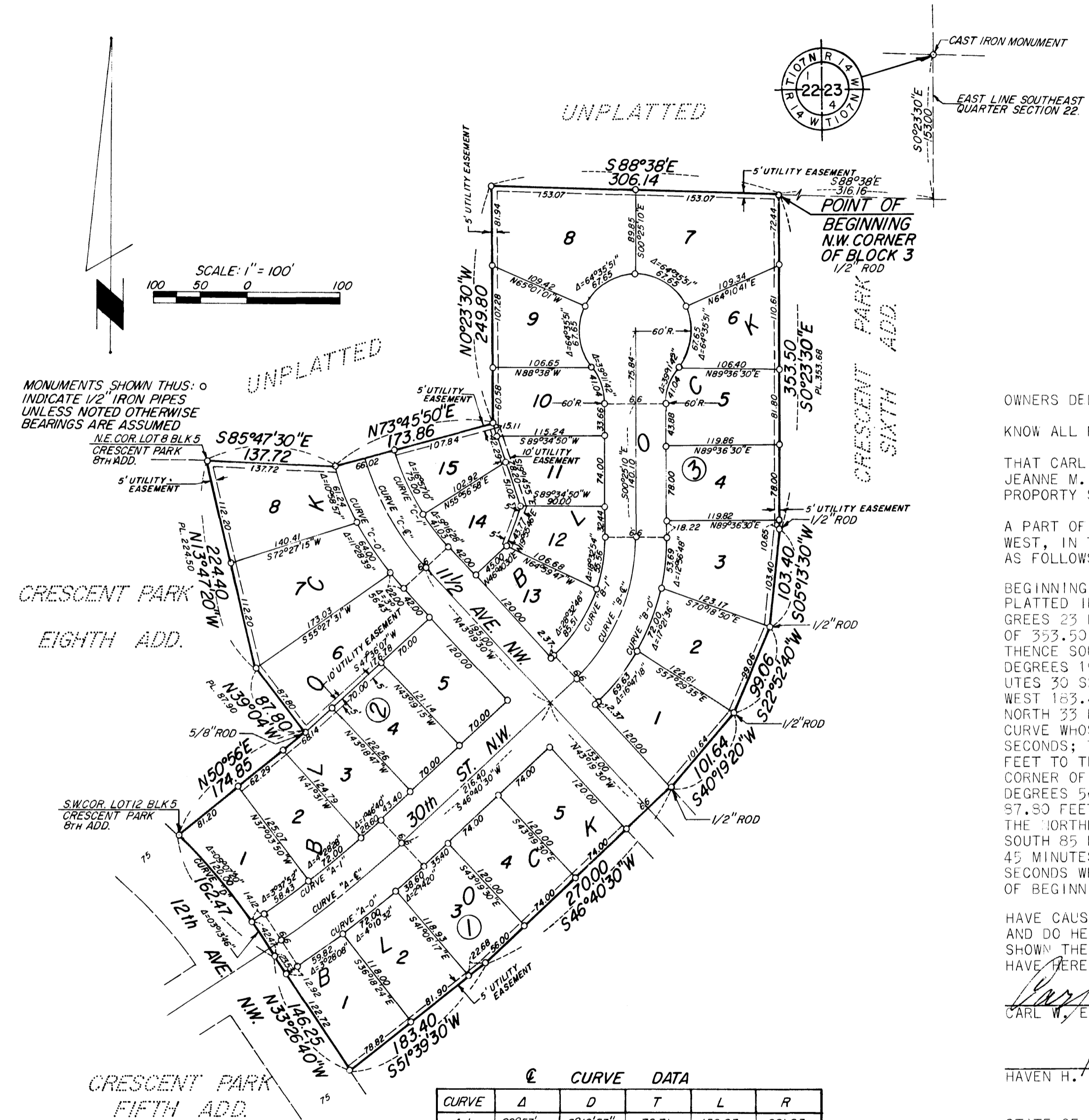


CRESCENT PARK NINTH ADDITION

ROCHESTER, MINNESOTA



SURVEYOR'S CERTIFICATE

STATE OF MINNESOTA)
COUNTY OF OLMSTED) S.S.

I DO HEREBY CERTIFY THAT I HAVE SURVEYED AND PLATTED THE PROPERTY DESCRIBED ON THIS PLAT AS "CRESCENT PARK NINTH ADDITION"; THAT THIS IS A CORRECT REPRESENTATION OF SAID SURVEY; THAT ALL DISTANCES ARE CORRECTLY SHOWN ON SAID PLAT IN FEET AND DECIMALS OF A FOOT; THAT ALL MONUMENTS HAVE BEEN CORRECTLY PLACED IN THE GROUND AS SHOWN ON THE PLAT; THAT THE OUTSIDE BOUNDARY LINES ARE CORRECTLY DESIGNATED ON SAID PLAT OTHER THAN AS SHOWN THEREON AND THAT SAID PLAT HAS NOT BEEN PREVIOUSLY PLATTED.

SURVEYOR Douglas N. Betts
DOUGLAS N. BETTS, P.E. & R.L.S.

MINNESOTA REGISTRATION NO. 6580

STATE OF MINNESOTA)
COUNTY OF OLMSTED) S.S.

THE ABOVE SURVEYOR'S CERTIFICATE WAS SUBSCRIBED AND SWORN TO BEFORE ME, A NOTARY PUBLIC WITHIN AND FOR SAID COUNTY AND STATE ON THIS 27 DAY OF September 1974 A.D.

Howard E. Hunt
NOTARY PUBLIC, OLMSTED COUNTY, MINNESOTA
MY COMMISSION EXPIRES 9 DAY OF February 1975 A.D.

COUNTY SURVEYOR'S CERTIFICATE OF APPROVAL

I CERTIFY THAT THIS PLAT HAS BEEN CHECKED MATHEMATICALLY AND THAT THE PLAT CONFORMS TO THE APPLICABLE PLATTING LAWS.

APPROVED THIS 16th DAY OF Oct 1974 A.D.

Roger W. Brand
OLMSTED COUNTY SURVEYOR

STATE OF MINNESOTA)
COUNTY OF OLMSTED) S.S.
CITY OF ROCHESTER)

I, CAROLE A. GRIMM, CITY CLERK IN AND FOR THE CITY OF ROCHESTER, DO HEREBY CERTIFY THAT ON THE 18th DAY OF February 1975 A.D. THE ACCOMPANYING PLAT WAS DULY APPROVED BY THE COMMON COUNCIL OF THE CITY OF ROCHESTER. IN TESTIMONY THEREOF I HAVE HEREUNTO SIGNED MY NAME AND AFFIXED THE SEAL OF SAID CITY OF ROCHESTER THIS 19th DAY OF February 1975 A.D.

Carole A. Grimm
CITY CLERK

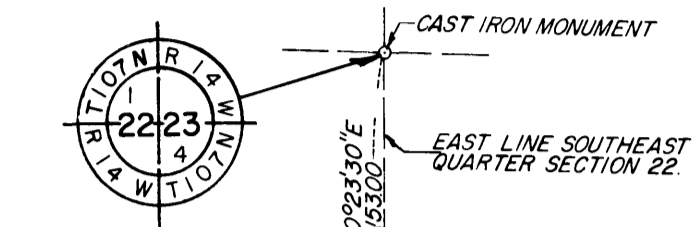
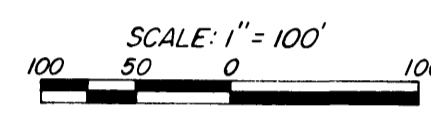
NO DELINQUENT TAXES DUE AND TRANSFER ENTERED THIS 28th DAY OF February 1975 A.D.

Ross Banning
COUNTY AUDITOR
Paula Evans, Deputy

FILED FOR RECORD THIS 28 DAY OF February 1975 A.D., AT 4 1/2 O'CLOCK P.M. IN BOOK 363012 OF PLATS, ON PAGE 1.

Howard E. Hunt
REGISTER OF DEEDS
Paula Evans, Deputy

MONUMENTS SHOWN THIS: ○ INDICATE 1/2" IRON PIPES UNLESS NOTED OTHERWISE BEARINGS ARE ASSUMED



OWNERS DEDICATION:

KNOW ALL MEN BY THESE PRESENTS:

THAT CARL W. ELFORD AND VIVIAN J. ELFORD, HIS WIFE, AND HAVEN H. HODGE AND JEANNE M. HODGE, HIS WIFE, OWNERS AND PROPRIETORS OF THE FOLLOWING DESCRIBED PROPERTY SITUATED IN THE CITY OF ROCHESTER, STATE OF MINNESOTA, TO WIT:

A PART OF THE SOUTHEAST QUARTER OF SECTION 22, TOWNSHIP 107 NORTH, RANGE 14 WEST, IN THE CITY OF ROCHESTER, OLMSTED COUNTY, STATE OF MINNESOTA, DESCRIBED AS FOLLOWS:

BEGINNING AT THE NORTHWEST CORNER OF BLOCK 3 OF CRESCENT PARK SIXTH ADDITION AS PLATTED IN THE CITY OF ROCHESTER; THENCE ON AN ASSUMED BEARING OF SOUTH 00 DEGREES 23 MINUTES 30 SECONDS EAST ALONG THE WEST LINE OF SAID ADDITION A DISTANCE OF 353.50 FEET; THENCE SOUTH 05 DEGREES 13 MINUTES 30 SECONDS WEST 103.40 FEET; THENCE SOUTH 22 DEGREES 52 MINUTES 40 SECONDS WEST 99.02 FEET; THENCE SOUTH 40 DEGREES 19 MINUTES 20 SECONDS WEST 101.64 FEET; THENCE SOUTH 46 DEGREES 40 MINUTES 30 SECONDS WEST 270.00 FEET; THENCE SOUTH 51 DEGREES 39 MINUTES 30 SECONDS WEST 183.40 FEET TO A POINT ON THE EAST LINE OF TWELFTH AVENUE NORTHWEST; THENCE NORTH 33 DEGREES 26 MINUTES 40 SECONDS WEST 146.25 FEET TO THE BEGINNING OF A CURVE WHOSE RADIUS IS 753.70 FEET AND DELTA ANGLE IS 12 DEGREES 21 MINUTES 06 SECONDS; THENCE NORTHWESTERLY, DEFLECTING TO THE LEFT ALONG SAID CURVE, 162.47 FEET TO THE POINT OF TANGENT OF SAID CURVE AND SAID POINT BEING THE SOUTHWEST CORNER OF LOT 12 OF BLOCK 5 OF CRESCENT PARK EIGHTH ADDITION; THENCE NORTH 50 DEGREES 55 MINUTES EAST 174.85 FEET; THENCE NORTH 39 DEGREES 04 MINUTES WEST 57.30 FEET; THENCE NORTH 13 DEGREES 47 MINUTES 20 SECONDS WEST 224.40 FEET TO THE NORTHEAST CORNER OF LOT 8 BLOCK 5 OF CRESCENT PARK EIGHTH ADDITION; THENCE SOUTH 85 DEGREES 47 MINUTES 30 SECONDS EAST 137.72 FEET; THENCE NORTH 73 DEGREES 45 MINUTES 50 SECONDS EAST 173.86 FEET; THENCE NORTH 00 DEGREES 23 MINUTES 30 SECONDS WEST 249.80 FEET; THENCE SOUTH 88 DEGREES 33 MINUTES EAST TO THE POINT OF BEGINNING.

HAVE CAUSED THE SAME TO BE SURVEYED AND PLATTED AS "CRESCENT PARK NINTH ADDITION" AND DO HEREBY DONATE AND DEDICATE TO THE PUBLIC USE FOREVER THE STREET AND AVENUE SHOWN THEREON AND GRANT THE EASEMENTS DEFINED THEREON, IN WITNESS WHEREOF WE HAVE HEREUNTO SET OUR HANDS THIS 15 DAY OF Jan 1975 A.D.

Carl W. Elford Vivian J. Elford
CARL W. ELFORD VIVIAN J. ELFORD
Haven H. Hodge Jeanne M. Hodge
HAVEN H. HODGE JEANNE M. HODGE

STATE OF MINNESOTA)
COUNTY OF OLMSTED) S.S.

ON THIS 15 DAY OF January 1975 A.D., BEFORE ME A NOTARY PUBLIC IN AND FOR SAID COUNTY PERSONALLY APPEARED CARL W. ELFORD AND VIVIAN J. ELFORD, HIS WIFE, AND HAVEN H. HODGE AND JEANNE M. HODGE, HIS WIFE, TO ME KNOWN TO BE THE PERSONS DESCRIBED IN AND WHO EXECUTED THE SAME AS THEIR FREE ACT AND DEED.

Howard E. Hunt
NOTARY PUBLIC, OLMSTED COUNTY, MINNESOTA
MY COMMISSION EXPIRES 9 DAY OF February 1975 A.D.

CURVE	Δ	D	T	L	R
A-1	09°53'	6°12'53"	79.71	159.03	921.93
A-E	09°53'	6°00'	82.57	164.72	954.93
A-O	09°53'	5°47'58"	85.42	170.42	987.93
B-1	47°05'40"	33°23'	74.80	141.07	171.63
B-E	47°05'40"	28°00'	89.18	168.19	204.63
B-O	47°05'40"	24°06'41"	103.56	195.32	237.63
C-1	26°13'38"	22°36'13"	59.05	116.03	253.48
C-E	26°19'36"	20°00'	67.00	131.63	286.48
C-O	26°24'19"	17°56'03"	74.95	147.24	319.48
D	12°21'06"	7°36'07"	81.56	162.47	753.70

UTILITY EASEMENT DEFINED:

AN UNOBSTRUCTED EASEMENT FOR THE CONSTRUCTION AND MAINTENANCE OF ALL NECESSARY OVERHEAD, UNDERGROUND OR SURFACE PUBLIC UTILITIES INCLUDING RIGHTS TO CONDUCT DRAINAGE AND TRIMMING ON SAID EASEMENT.

OFFICIAL PLAT

PREPARED BY:
McGHEE & BETTS, INC.
CONSULTING ENGINEERS
ROCHESTER, MINNESOTA