

OFFICIAL PLAT

NORTH PARK ELEVENTH SUBDIVISION

SURVEYOR'S CERTIFICATE

I hereby certify that I have surveyed and platted the property described on this plat as NORTH PARK ELEVENTH SUBDIVISION; that this plat is a correct representation of the survey; that all distances are correctly shown on the plat in feet and hundredths of a foot; that all monuments have been correctly placed in the ground as shown; that the outside boundary lines are correctly designated on the plat; and that there are no wet lands as defined in MS 505.02, Subd. 1, or public highways to be designated other than as shown.

James E. Swanson
James E. Swanson, L.S.
Minnesota License No. 11622

State of Minnesota
County of Dodge

The surveyor's certificate was subscribed and sworn to before me, a Notary Public, this 23 day of August, 2001.

Beth A. Davis
Notary Public, Dodge County, Minnesota



My commission expires: 1-31-2005

COUNTY SURVEYOR

I certify that this plat has been checked mathematically, and that the plat conforms to the applicable laws, this 24 day of August, 2001.

Edward P. Kuivola
County Surveyor

CITY APPROVAL

State of Minnesota
County of Olmsted
City of Rochester

I, Judy K. Scherr, City Clerk, in and for the City of Rochester, do hereby certify that on the 20th day of August, 2001, the accompanying plat was duly approved by the Common Council of the City of Rochester. In testimony thereof I have hereunto signed my name and affixed the seal of said City of Rochester this 24th day of OCTOBER, 2001.

Judy K. Scherr
Judy K. Scherr, City Clerk

PROPERTY RECORDS AND LICENSING

Taxes payable in the year 2001 on the land herein described have been paid, there are no delinquent taxes and transfer has been entered this 30th day of October, 2001.

DOCUMENT NUMBER A-891497

I hereby certify that this instrument was filed in the Office of Property Records and Licensing for the record on this 30th day of October, 2001, at 4 o'clock P. M., and was duly recorded in the Olmsted County records.

Daniel A. Hall
Director of Property Records & Licensing

Wendy von Wald
Deputy

INSTRUMENT OF DEDICATION

KNOW ALL MEN BY THESE PRESENTS: That Leslie A. Lurken, a single person, owner and proprietor of the following described property situated in the City of Rochester, State of Minnesota, to wit:

A part of the East Half of Section 8, Township 107 North, Range 14 West, Olmsted County, Minnesota, described as follows:

Commencing at the northeast corner of the Southeast Quarter of said Section 8; thence North 89 degrees 38 minutes 27 seconds West, assumed bearing, along the north line of said Southeast Quarter, 391.83 feet to the northwest corner of Lot 3, Block 3, 55TH STREET ESTATES FIRST SUBDIVISION for the point of beginning; thence South 00 degrees 57 minutes 24 seconds West, along the west line of said Lot 3 a distance of 470.53 feet to the southwest corner of said Lot 3; thence South 36 degrees 06 minutes 51 seconds West along the northwesterly line of said Lot 1, in said Block 3, a distance of 171.44 feet to the northeast corner of Lot 1, Block 3, NORTH PARK SECOND SUBDIVISION; thence West, along the north line of said NORTH PARK SECOND SUBDIVISION, 748.82 feet to the northeast corner of OUTLOT "B" in said NORTH PARK SECOND SUBDIVISION; thence North 31 degrees 47 minutes 35 seconds West, 147.53 feet; thence North 01 degree 04 minutes 03 seconds East, 489.45 feet to the northwest corner of the Northeast Quarter of the Southeast Quarter of said Section 8; thence South 89 degrees 38 minutes 27 seconds East, along the north line thereof, 926.35 feet to the point of beginning.

Containing 12.75 acres more or less.

has caused the same to be surveyed and platted as NORTH PARK ELEVENTH SUBDIVISION and does hereby donate and dedicate to the public for the public use forever the thoroughfares and cul-de-sacs and also dedicate the easements as shown on this plat for drainage and utility purposes only.

In witness whereof said Leslie A. Lurken, a single person, has caused these presents to be signed this 24 day of August, 2001.

Leslie A. Lurken
Leslie A. Lurken

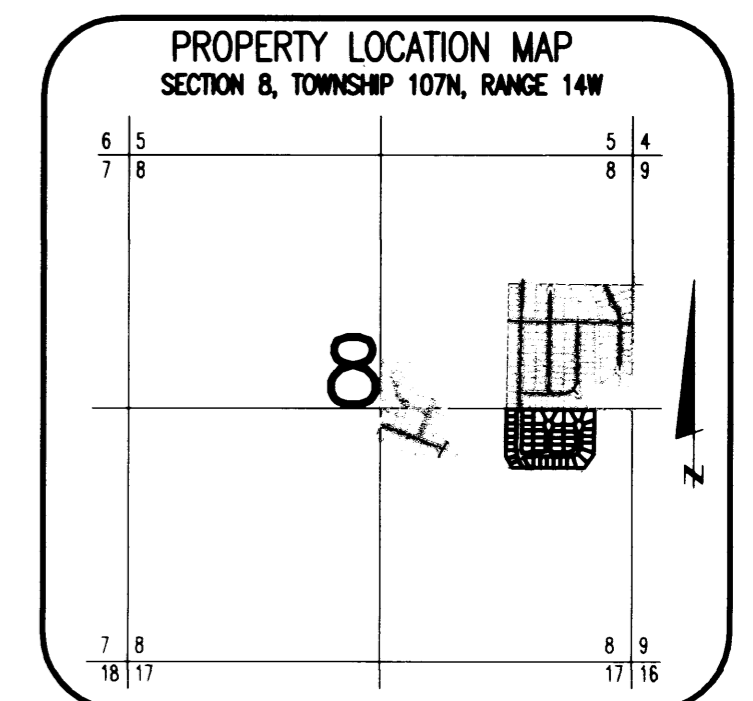
State of Minnesota
County of Dodge

The foregoing instrument was acknowledged before me this 24 day of August, 2001, by Leslie A. Lurken, a single person.

Beth A. Davis
Notary Public, Dodge County, Minnesota



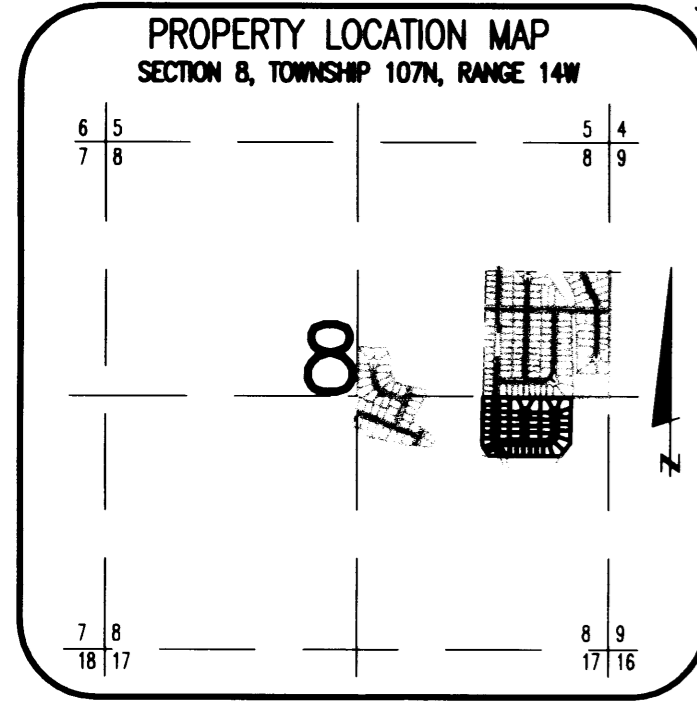
My Commission expires: 1-31-2005



PREPARED BY:
McGHEE & BETTS, INC.
CONSULTING ENGINEERS
PLANNERS, LAND SURVEYORS
ROCHESTER, MINNESOTA

316 B

NORTH PARK ELEVENTH SUBDIVISION



NORTHWEST CORNER
NE 1/4 OF SE 1/4,
SEC 8-107-14

UNPLATTED

UTILITY EASEMENT defined:
An unobstructed easement for the construction and maintenance of all necessary underground or surface public utilities including rights to conduct drainage and trimming on said easement.

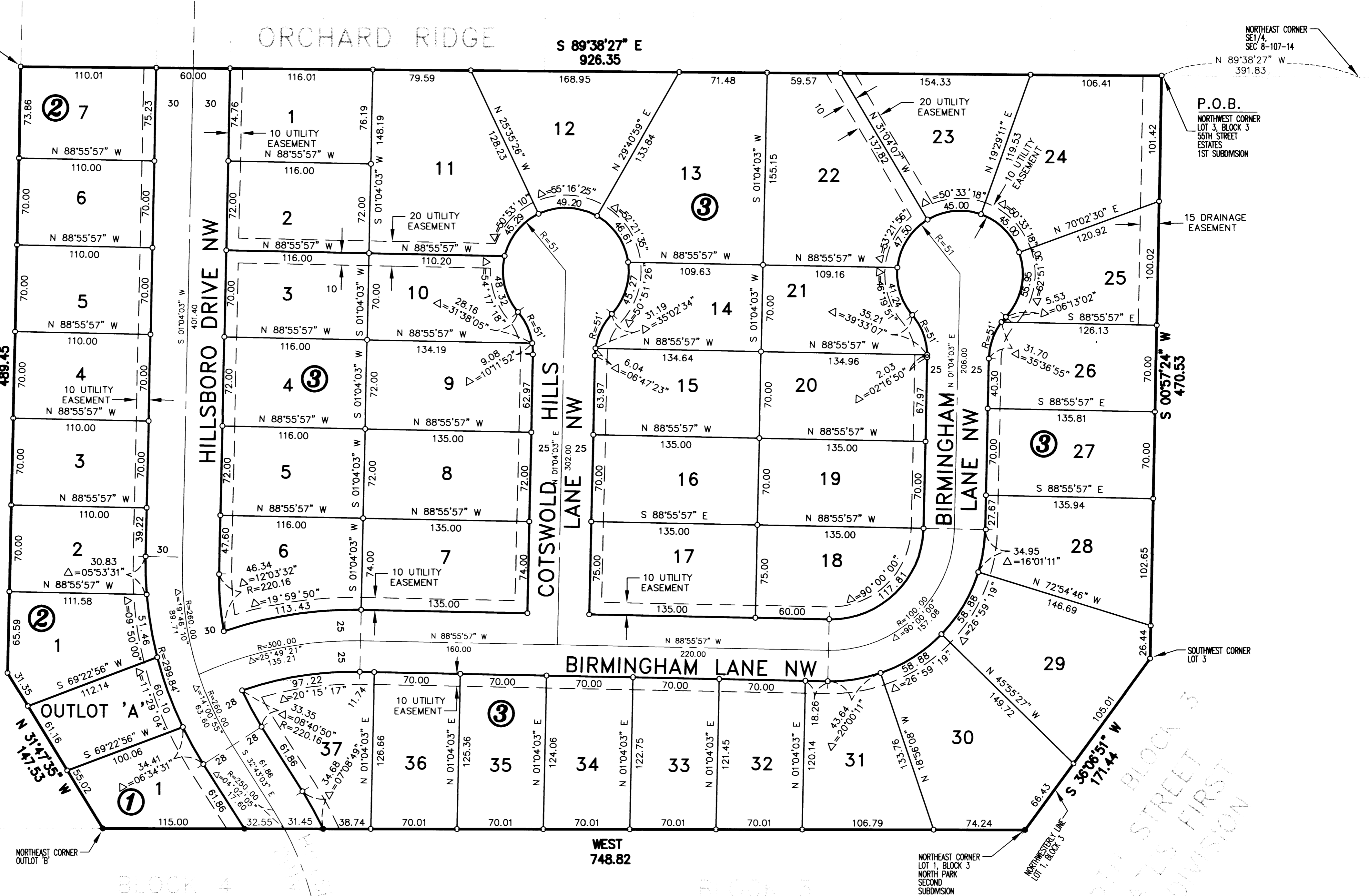
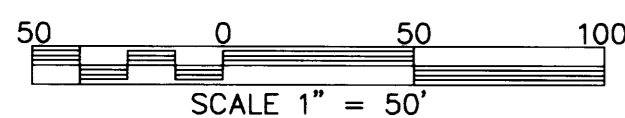
DRAINAGE EASEMENT defined:
An unobstructed easement for the operation and maintenance of waterways, both surface and underground, running over, across, and under said easement.

NOTE:

ALL MONUMENTS SHOWN THUS: ○
ARE 5/8" I.D. CAPPED PIPES SET
WITH REGISTRATION NO. 11622.

ALL MONUMENTS SHOWN THUS: ●
ARE FOUND 5/8" PIPE UNLESS
OTHERWISE NOTED.

BASIS OF BEARING SYSTEM :
ALL BEARINGS ARE IN RELATIONSHIP
WITH THE NORTH LINE S.E. 1/4, SEC 8-107-14
WHICH IS ASSUMED TO BE S 89°38'27" E.



NORTHEAST CORNER
SE 1/4,
SEC 8-107-14

P.O.B.
NORTHWEST CORNER
LOT 3, BLOCK 3
55TH STREET
ESTATES
1ST SUBDIVISION

15 DRAINAGE
EASEMENT

SOUTHWEST CORNER
LOT 3

NORTHEAST CORNER
OUTLOT 'B'

NORTHEAST CORNER
LOT 1, BLOCK 3
NORTH PARK
SECOND
SUBDIVISION

BLOCK 4
NORTH PARK SECOND SUBDIVISION
BLOCK 3
NORTH PARK SECOND SUBDIVISION
55TH STREET
ESTATES FIRST
SUBDIVISION