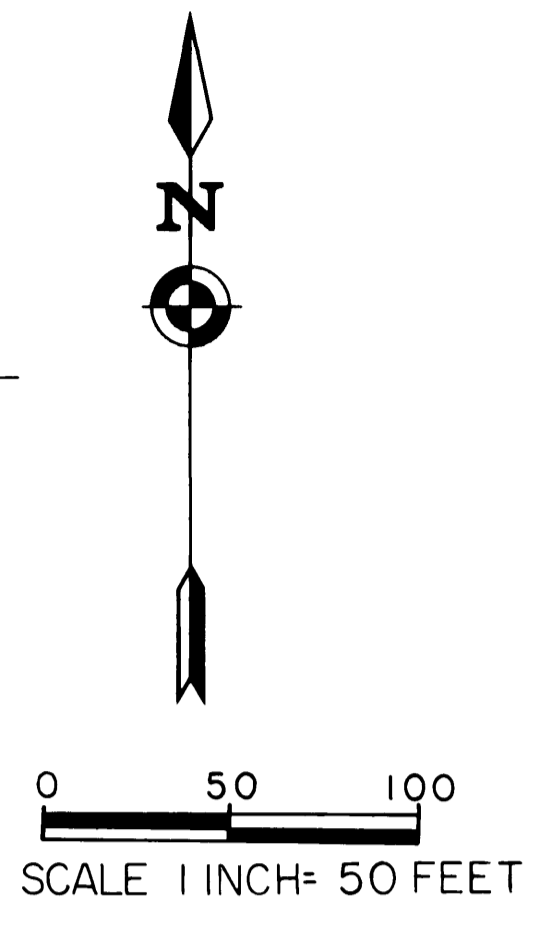
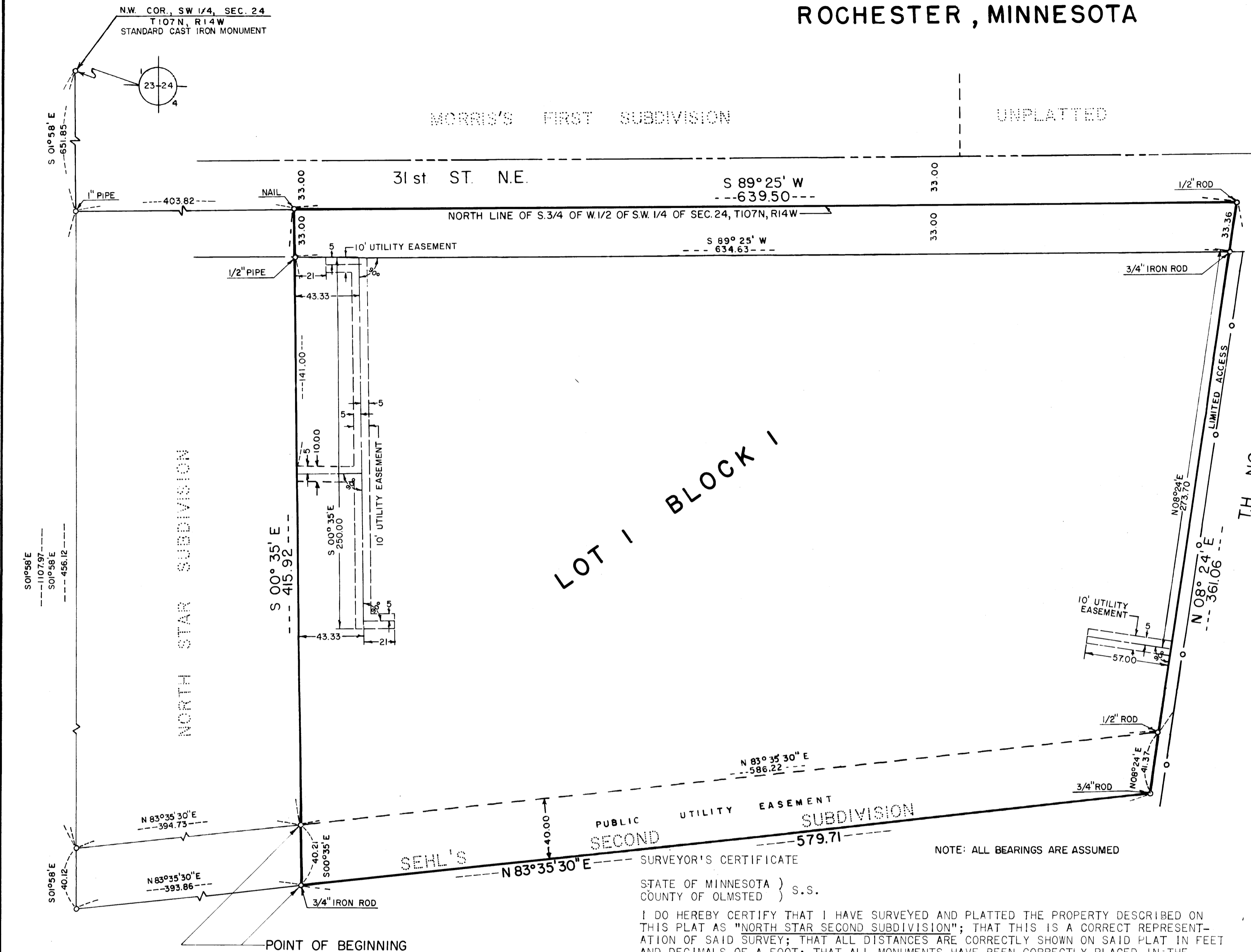


NORTH STAR SECOND SUBDIVISION ROCHESTER, MINNESOTA



OWNERS JEDICATION:
KNOW ALL MEN BY THESE PRESENTS:
THAT DAVID T. BISHOP AND BEATRICE H. BISHOP, HIS WIFE, AND THE EBERHARDT COMPANY, OWNERS AND PROPRIETORS OF THE FOLLOWING DESCRIBED PROPERTY SITUATED IN THE CITY OF ROCHESTER, STATE OF MINNESOTA, TO WIT:

THAT PART OF THE SOUTH THREE-FOURTHS (S³/₄) OF THE WEST ONE-HALF (W¹/₂) OF THE SOUTHWEST QUARTER (SW¹/₄) OF SECTION TWENTY FOUR (24), TOWNSHIP ONE HUNDRED SEVEN (107), NORTH OF RANGE FOURTEEN (14) WEST, LYING WEST OF U.S. TRUNK HIGHWAY NO. 63, LESS THAT PART PLATTED AS NORTH STAR SUBDIVISION AND DESCRIBED AS FOLLOWS:

COMMENCING AT THE NORTHWEST CORNER OF SAID SOUTHWEST QUARTER (SW¹/₄), RUNNING THENCE SOUTH 01° 58' EAST ALONG THE WEST LINE THEREOF A DISTANCE OF 651.85 FEET, RUNNING THENCE SOUTH 01° 58' EAST ALONG SAID WEST LINE A DISTANCE OF 456.12 FEET, THENCE NORTH 83° 35' 30" EAST A DISTANCE OF 394.73 FEET TO A POINT IN THE EAST LINE OF NORTH STAR SUBDIVISION AS PLATTED IN THE CITY OF ROCHESTER FOR A POINT OF BEGINNING; THENCE CONTINUE NORTH 83° 35' 30" EAST A DISTANCE OF 586.22 FEET TO A POINT IN THE WEST RIGHT OF WAY LINE OF TRUNK HIGHWAY NO. 63; THENCE NORTH 08° 24' EAST ALONG SAID RIGHT OF WAY LINE A DISTANCE OF 361.06 FEET TO THE NORTH LINE THEREOF; THENCE SOUTH 89° 25' WEST ALONG SAID NORTH LINE A DISTANCE OF 639.50 FEET TO THE NORTHEAST CORNER OF SAID SUBDIVISION; THENCE SOUTH 00° 35' EAST A DISTANCE OF 415.92 FEET TO THE POINT OF BEGINNING.

ALSO A PART OF THE NORTHERLY 40.0 FEET OF THE DRAINAGE AND UTILITY EASEMENT OF SEHL'S SECOND SUBDIVISION DESCRIBED AS FOLLOWS:

COMMENCING AT THE NORTHWEST CORNER OF THE SOUTHWEST QUARTER (SW¹/₄) OF SECTION 24, TOWNSHIP 107, NORTH OF RANGE 14 WEST IN OLMSTED COUNTY, MINNESOTA AND RUNNING THENCE SOUTH 01° 58' EAST ALONG THE WEST LINE THEREOF A DISTANCE OF 1107.97 FEET; THENCE SOUTH 01° 58' EAST A DISTANCE OF 40.12 FEET; THENCE NORTH 83° 35' 30" EAST A DISTANCE OF 393.86 FEET TO THE SOUTHEAST CORNER OF NORTH STAR SUBDIVISION FOR A POINT OF BEGINNING; THENCE CONTINUE NORTH 83° 35' 30" EAST A DISTANCE OF 579.71 FEET TO A POINT IN THE WEST RIGHT OF WAY LINE OF TRUNK HIGHWAY NO. 63; THENCE NORTH 08° 24' EAST ALONG SAID RIGHT OF WAY LINE A DISTANCE OF 41.37 FEET; THENCE SOUTH 83° 35' 30" WEST A DISTANCE OF 586.22 FEET TO A POINT IN THE EAST LINE OF SAID NORTH STAR SUBDIVISION; THENCE SOUTH 00° 35' EAST A DISTANCE OF 40.21 FEET TO THE POINT OF BEGINNING.

HAVE CAUSED THE SAME TO BE SURVEYED AND PLATTED AS "NORTH STAR SECOND SUBDIVISION", AND DO HEREBY DONATE AND DEDICATE TO THE PUBLIC USE FOREVER THE STREET SHOWN THEREON AND GRANT THE EASEMENTS DEFINED THEREON. IN WITNESS WHEREOF WE HAVE HEREUNTO SET OUR HANDS THIS 1ST DAY OF April 1974 A.D.

David T. Bishop
DAVID T. BISHOP
Beatrice H. Bishop
BEATRICE H. BISHOP

STATE OF MINNESOTA } S.S.
COUNTY OF OLMSTED }
ON THIS 1ST DAY OF April 1974 A.D. BEFORE ME A NOTARY PUBLIC IN AND FOR SAID COUNTY, PERSONALLY APPEARED DAVID T. BISHOP AND BEATRICE H. BISHOP, HIS WIFE, TO ME KNOWN TO BE THE PERSONS DESCRIBED IN AND WHO EXECUTED THE SAME AS THEIR FREE ACT AND DEED.

Franklin Michaels
NOTARY PUBLIC, OLMSTED COUNTY, MINNESOTA

MY COMMISSION EXPIRES OCT 26 1974 A.D.

FRANKLIN MICHAELS
Notary Public, Olmsted County, Minn.
My Commission Expires Oct. 26, 1974

N. Craig Johnson
N. CRAIG JOHNSON, VICE-PRESIDENT
K.W. Sorteberg
K.W. SORTEBERG, ASSISTANT VICE-PRESIDENT

STATE OF MINNESOTA } S.S.
COUNTY OF HENNEPIN }

ON THIS 7th DAY OF March 1974 A.D. BEFORE ME A NOTARY PUBLIC IN AND FOR SAID COUNTY, PERSONALLY APPEARED N. CRAIG JOHNSON AND K.W. SORTEBERG, TO ME PERSONALLY KNOWN, WHO BEING DULY SWORN, DID SAY THEY ARE VICE-PRESIDENT AND ASSISTANT VICE-PRESIDENT OF THE EBERHARDT COMPANY, AND THAT SAID INSTRUMENT IS SIGNED AND SEALED IN ITS BEHALF BY AUTHORITY OF ITS MEMBERS, AND THAT SAID N. CRAIG JOHNSON AND K. W. SORTEBERG ACKNOWLEDGE SAID INSTRUMENT TO BE THE FREE ACT AND DEED OF SAID CORPORATION.

MY COMMISSION EXPIRES August 19 1978 A.D.

Edna Sundberg
NOTARY PUBLIC, HENNEPIN COUNTY, MINNESOTA

PUBLIC UTILITY EASEMENT DEFINED:
AN UNOBSTRUCTED EASEMENT FOR THE CONSTRUCTION AND MAINTENANCE OF ALL NECESSARY OVERHEAD, UNDERGROUND OR SURFACE, PRIVATE AND PUBLIC UTILITIES, INCLUDING RIGHTS TO CONDUCT DRAINAGE AND TRIMMING ON SAID EASEMENT.

UTILITY EASEMENT DEFINED:
EASEMENTS FOR THE CONSTRUCTION, MAINTENANCE AND OPERATION OF WATERMAINS AND APPURTENANCES, INCLUDING RIGHTS TO CONDUCT DRAINAGE AND TRIMMING RIGHTS ON SAID EASEMENT.

LIMITED ACCESS DEFINED:
EGRESS OR INGRESS BY VEHICULAR TRAVEL IS NOT PERMITTED OVER AND ACROSS THE WESTERLY RIGHT OF WAY LINE OF T.H. NO. 63 AS DESIGNATED ON THE PLAT.

PREPARED BY:
McGhie & Betts, Inc.
CONSULTING ENGINEERS
ROCHESTER, MINNESOTA

STATE OF MINNESOTA } S.S.
COUNTY OF OLMSTED }
CITY OF ROCHESTER }
I, CAROLE A. GRIMM, CITY CLERK IN AND FOR THE CITY OF ROCHESTER, DO HEREBY CERTIFY THAT ON THE 20th DAY OF May 1974 A.D. THE ACCOMPANYING PLAT WAS DULY APPROVED BY THE COMMON COUNCIL OF THE CITY OF ROCHESTER. IN TESTIMONY THEREOF I HAVE HEREUNTO SIGNED MY NAME AND AFFIXED THE SEAL OF SAID CITY OF ROCHESTER THIS 21st DAY OF May 1974 A.D.
Carole A. Grimm
CITY CLERK

NO DELINQUENT TAXES DUE AND TRANSFER ENTERED THIS 11th DAY OF October 1974 A.D.

Gene Browning
COUNTY AUDITOR

STATE OF MINNESOTA } S.S.
COUNTY OF OLMSTED }
Document No. 23039

FILED FOR RECORD THIS 11th DAY OF October 1974 A.D. AT 2 O'CLOCK P.M.
IN BOOK _____ OF PLATS ON PAGE _____ INSTRUMENT NUMBER _____

James J. Evans
REGISTRAR OF TITLES
James O. Sudevan, Deputy

STATE OF MINNESOTA } S.S.
COUNTY OF OLMSTED }
I DO HEREBY CERTIFY THAT I HAVE SURVEYED AND PLATTED THE PROPERTY DESCRIBED ON THIS PLAT AS "NORTH STAR SECOND SUBDIVISION"; THAT THIS IS A CORRECT REPRESENTATION OF SAID SURVEY; THAT ALL DISTANCES ARE CORRECTLY SHOWN ON SAID PLAT IN FEET AND DECIMALS OF A FOOT; THAT ALL MONUMENTS HAVE BEEN CORRECTLY PLACED IN THE GROUND AS SHOWN ON THE PLAT; THAT THE OUTSIDE BOUNDARY LINES ARE CORRECTLY DESIGNATED ON THE PLAT; THAT THERE ARE NO WET LANDS OR PUBLIC HIGHWAYS TO BE DESIGNATED ON SAID PLAT OTHER THAN AS SHOWN THEREON; AND THAT SAID PLAT HAS NOT BEEN PREVIOUSLY PLATTED, EXCEPT THAT PART OF THE PUBLIC UTILITY EASEMENT PLATTED IN SEHL'S SECOND SUBDIVISION.

SURVEYOR A. M. McGhie
MINNESOTA REGISTRATION NO. 1613
STATE OF MINNESOTA } S.S.
COUNTY OF OLMSTED }

THE ABOVE SURVEYOR'S CERTIFICATE WAS SUBSCRIBED AND SWORN TO BEFORE ME, A NOTARY PUBLIC WITHIN AND FOR SAID COUNTY AND STATE ON THIS 5th DAY OF March 1974 A.D.

Howard E. Hunt
NOTARY PUBLIC, OLMSTED COUNTY, MINNESOTA
MY COMMISSION EXPIRES 19 A.D.

COUNTY SURVEYOR'S CERTIFICATE OF APPROVAL
I CERTIFY THAT THIS PLAT HAS BEEN CHECKED MATHEMATICALLY AND THAT THE PLAT CONFORMS TO THE APPLICABLE PLATTING LAWS.

APPROVED THIS 28th DAY OF March 1974 A.D.
Robert W. Brand
OLMSTED COUNTY SURVEYOR

OFFICIAL
PLAT