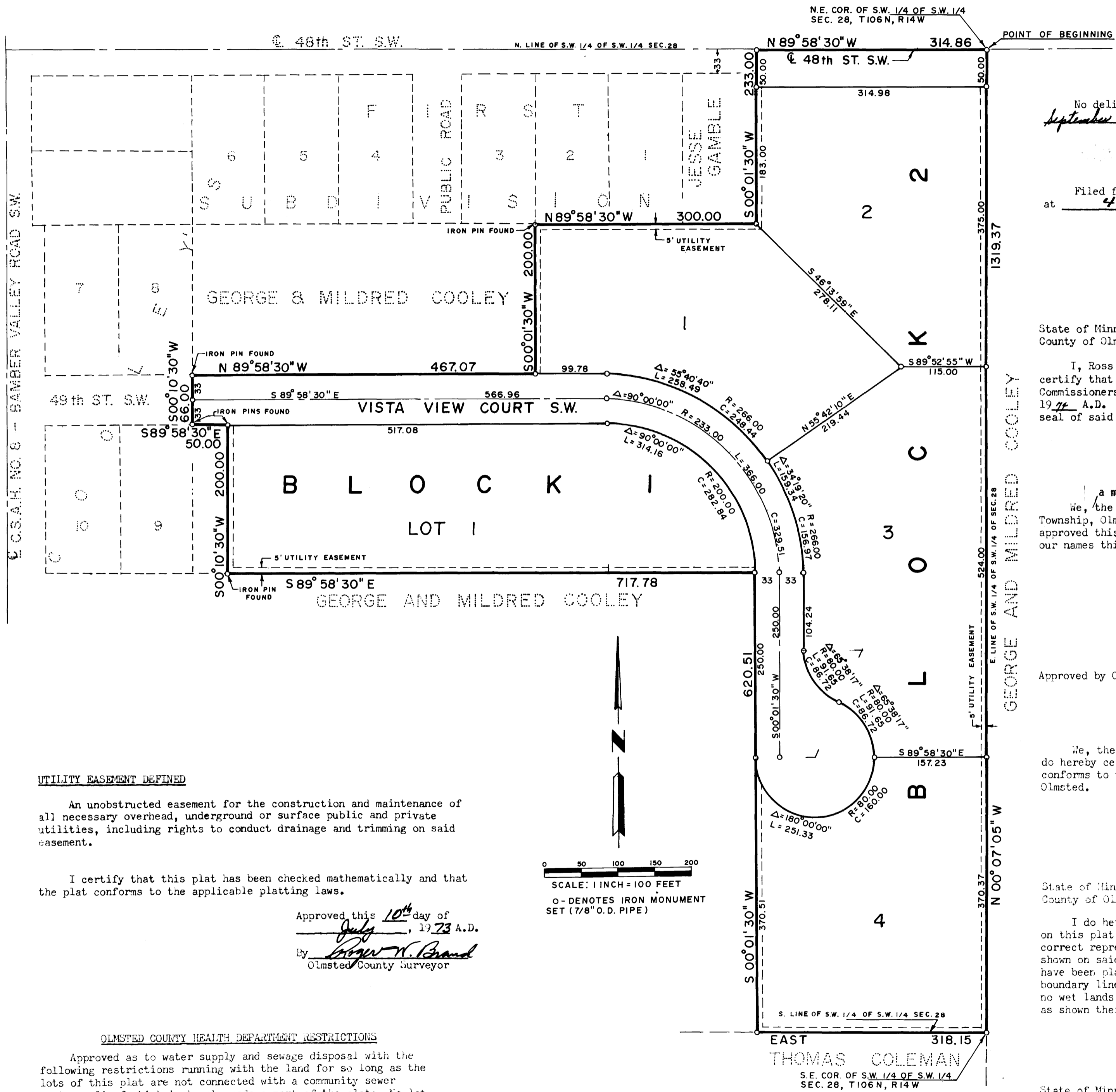


COOLEY'S SECOND SUBDIVISION

OLMSTED COUNTY, MINNESOTA

OFFICIAL PLAT



UTILITY EASEMENT DEFINED

An unobstructed easement for the construction and maintenance of all necessary overhead, underground or surface public and private utilities, including rights to conduct drainage and trimming on said easement.

I certify that this plat has been checked mathematically and that the plat conforms to the applicable platting laws.

Approved this 10th day of July, 1973 A.D.
 By Oliver W. Brand
 Olmsted County Surveyor

OLMSTED COUNTY HEALTH DEPARTMENT RESTRICTIONS

Approved as to water supply and sewage disposal with the following restrictions running with the land for so long as the lots of this plat are not connected with a community sewer system, all of which is hereby made a part of the plat: No lot shall be subdivided until such time that a community sewer system is available.

Olmsted County Public Health Engineer
 by William P. Stoll

PREPARED BY
YAGGY ASSOCIATES, INC.
 CONSULTING ENGINEERS
 ROCHESTER, MINNESOTA

No delinquent taxes due and transfer entered this 25th day of September, 1974 A.D.
353585
 Filed for record this 25 day of September, 1974 A.D. at 4 o'clock P.M. in book of plats on page .

Harvey J. Evans
 Register of Deeds
 Olmsted County, Minnesota
Carol M. Baker
 Deputy

I, Ross E. Browning, County Auditor for said County, do hereby certify that the annexed plat was duly approved by the Board of County Commissioners at a meeting held on the 12th day of September, 1974 A.D. In testimony whereof I have signed my name and affixed the seal of said County this 25th day of September, 1974 A.D.

a majority of
 We, the members of the Township Board of Supervisors for Rochester Township, Olmsted County, Minnesota, do hereby certify that we have approved this accompanying plat. In testimony whereof we have signed our names this 12 day of Sept, 1974 A.D.

Donald L. Herzfeld
 Supervisor

Approved by Olmsted County Highway Department
Cole Schellhammer
 County Engineer

We, the members of the Olmsted County Planning Advisory Commission do hereby certify that we have examined the plat as shown and find that it conforms to the provisions of the Subdivision Ordinance of the County of Olmsted.

Richard Brennan
 Chairman

I do hereby certify that I have surveyed and platted the property on this plat as "COOLEY'S SECOND SUBDIVISION", that this plat is a correct representation of said survey; that all distances are correctly shown on said plat in feet and decimals of a foot; that all monuments have been placed in the ground as shown on the plat; that the outside boundary lines are correctly designated on the plat; and that there are no wet lands or public highways to be designated on the plat other than as shown thereon.

State of Minnesota SS
 County of Olmsted

Surveyor Thomas Coleman
 Minnesota Registration No. 6507

The accompanying Surveyor's Certificate was subscribed and sworn to before me, a Notary Public within and for said County and State on this 10th day of July, 1973 A.D.

Ronald W. Yaggy
 Notary Public, Olmsted County, Minn.
 My commission expires 12-2-78

KNOW ALL MEN BY THESE PRESENTS: That C and C Custom Homes, George H. Cooley and Mildred Cooley, his wife, owners and proprietors of the following described property in the County of Olmsted, State of Minnesota, to wit:

A tract of land being in the Southwest one-quarter of the Southwest one-quarter of Section 28, Township 106 North, Range 14 West of the Fifth Principal Meridian, Olmsted County, Minnesota, described as follows: Beginning at the Northeast corner of said Southwest one-quarter of the Southwest one-quarter; thence on an assumed bearing of North 89 degrees 58 minutes 30 seconds West along the North line of said Southwest one-quarter of a township road a distance of 314.86 feet; thence South 0 degrees 01 minutes 30 seconds West 233.00 feet; thence North 89 degrees 58 minutes 30 seconds West 300.00 feet to a point which is the Southwesterly corner of Lot Two of Cooley's First Subdivision as platted in Olmsted County, Minnesota; thence South 0 degrees 01 minutes 30 seconds West, 200.00 feet; thence North 89 degrees 58 minutes 30 seconds West 467.07 feet to the Southeasterly corner of Lot Eight of Cooley's First Subdivision; thence South 0 degrees 10 minutes 30 seconds West 66.00 feet to the Northeasterly corner of Lot Nine of Cooley's First Subdivision; thence South 89 degrees 58 minutes 30 seconds East 50.00 feet; thence South 0 degrees 10 minutes 30 seconds West, 200.00 feet; thence South 89 degrees 58 minutes 30 seconds East 717.78 feet; thence South 0 degrees 01 minutes 30 seconds West, 620.51 feet to the South line of said Southwest one-quarter; thence East along said South line a distance of 318.15 feet to the East line of said Southwest one-quarter of the Southwest one-quarter; thence North 0 degrees 07 minutes 05 seconds West along said East line a distance of 1319.37 feet to the point of beginning,

have caused the same to be surveyed and platted as "COOLEY'S SECOND SUBDIVISION" and do hereby donate and dedicate to the public for public use forever the Court and Street as shown on the plat, and grant the easements defined thereon.

In witness whereof we have hereunto set our hands this 3rd day of August, 1973 A.D.

In the presence of C and C Custom Homes - a partnership
Nancy Brooks and Charles Mintzer George J. Caflish, Jr.
 Witness Witness Partner
Nancy Brooks and Charles Mintzer Walter D. Cassel
 Witness Witness Partner

In witness whereof we have hereunto set our hands this 12th day of July, 1973 A.D.

In the presence of:
Allen R. Brown and Susan K. Carleton George H. Cooley
 Witness Witness George H. Cooley
Allen R. Brown and Susan K. Carleton Mildred Cooley
 Witness Witness Mildred Cooley

State of Minnesota SS
 County of Olmsted

On this 3 day of August, 1973 A.D. before me, a Notary Public within and for said County and State, personally appeared George J. Caflish, Jr. and Walter D. Cassel, to me personally known, who being by me each duly sworn, did say that they are partners of C and C Custom Homes and who executed the foregoing instrument and they affirm and acknowledge that they executed the same as their own free act and deed.

Ronald W. Yaggy
 Notary Public, Olmsted County, Minnesota
 My commission expires 12-2-78

State of Minnesota SS
 County of Olmsted

On this 12th day of July, 1973 A.D. before me, a Notary Public within and for said County and State, personally appeared George H. Cooley and Mildred Cooley, his wife, to me personally known to be the persons described in and who executed the foregoing instrument and they affirm and acknowledge that they executed the same as their own free act and deed.

Allen R. Brown
 Notary Public, Olmsted County, Minn.
 My commission expires 12-2-78