

9

VANWHY'S FIRST SUBDIVISION

OLMSTED COUNTY, MINNESOTA

SURVEYOR'S CERTIFICATE

STATE OF MINNESOTA
COUNTY OF OLMSTED S.S.

I DO HEREBY CERTIFY THAT I HAVE SURVEYED AND PLATTED THE PROPERTY DESCRIBED ON THIS PLAT AS "VANWHY'S FIRST SUBDIVISION"; THAT THIS IS A CORRECT REPRESENTATION OF SAID SURVEY; THAT ALL DISTANCES ARE CORRECTLY SHOWN ON SAID PLAT IN FEET AND DECIMALS OF A FOOT; THAT ALL MONUMENTS HAVE BEEN CORRECTLY PLACED IN THE GROUND AS SHOWN ON THE PLAT; THAT THE OUTSIDE BOUNDARY LINES ARE CORRECTLY DESIGNATED ON THE PLAT; THAT THERE ARE NO WET LANDS OR PUBLIC HIGHWAYS TO BE DESIGNATED ON SAID PLAT OTHER THAN AS SHOWN THEREON; AND THAT THE SAID PLAT HAS NOT BEEN PREVIOUSLY PLATTED.

Douglas N. Betts
DOUGLAS N. BETTS, P.E. & R.L.S.
MINNESOTA REG. NO. 6980

STATE OF MINNESOTA S.S.
COUNTY OF OLMSTED

THE ABOVE SURVEYOR'S CERTIFICATE WAS SUBSCRIBED AND SWORN TO BEFORE ME, A NOTARY PUBLIC WITHIN AND FOR SAID COUNTY AND STATE ON THIS 1 DAY OF July 19 74 A.D.

Terrill Melchior
NOTARY PUBLIC, OLMSTED COUNTY, MINNESOTA

MY COMMISSION EXPIRES 3/27 19 75 A.D.

COUNTY SURVEYOR'S CERTIFICATE OF APPROVAL

I CERTIFY THAT THIS PLAT HAS BEEN CHECKED MATHEMATICALLY AND THAT THE PLAT CONFORMS TO THE APPLICABLE PLATTING LAWS.

APPROVED THIS 1st DAY OF July 19 74 A.D.

BY *Roger W. Brand*
OLMSTED COUNTY SURVEYOR

WE, THE MEMBERS OF THE TOWNSHIP BOARD OF SUPERVISORS FOR ROCHESTER TOWNSHIP, OLMSTED COUNTY, MINNESOTA, DO HEREBY CERTIFY THAT WE HAVE APPROVED THE ACCOMPANYING PLAT. IN TESTIMONY WHEREOF, WE HAVE SIGNED OUR NAMES THIS 9 DAY OF July 19 74 A.D.

Donald L. Frerichs
SUPERVISOR

Don Jorty
SUPERVISOR

Ed A. Kahl
CHAIRMAN

WE, THE MEMBERS OF THE OLMSTED COUNTY PLANNING ADVISORY COMMISSION, DO HEREBY CERTIFY THAT WE HAVE EXAMINED THE PLAT AS SHOWN, AND FIND THAT IT CONFORMS TO THE PROVISIONS OF THE SUBDIVISION ORDINANCE OF THE COUNTY OF OLMSTED.

Richard E. Brennan
COMMISSION CHAIRMAN

STATE OF MINNESOTA S.S.
COUNTY OF OLMSTED

I, ROSS E. BROWNING, COUNTY AUDITOR FOR SAID COUNTY, DO HEREBY CERTIFY THAT THE ANNEXED PLAT WAS DULY APPROVED BY THE BOARD OF COUNTY COMMISSIONERS AT A MEETING HELD ON THE 8th DAY OF July 19 74 A.D. IN TESTIMONY WHEREOF I HAVE SIGNED MY NAME AND AFFIXED THE SEAL OF SAID COUNTY THIS 15th DAY OF July 19 74 A.D.

Ross Browning
COUNTY AUDITOR

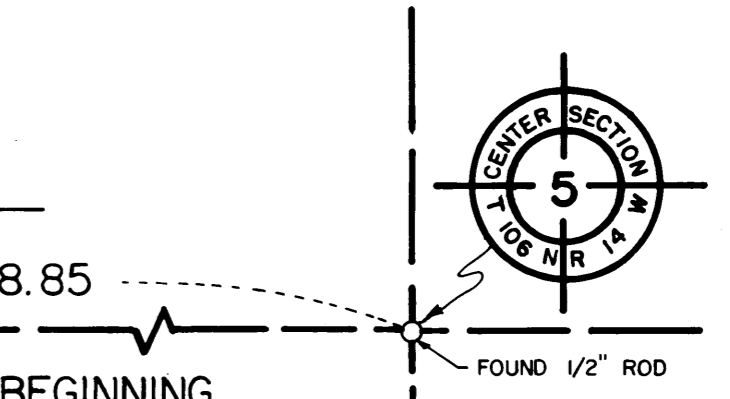
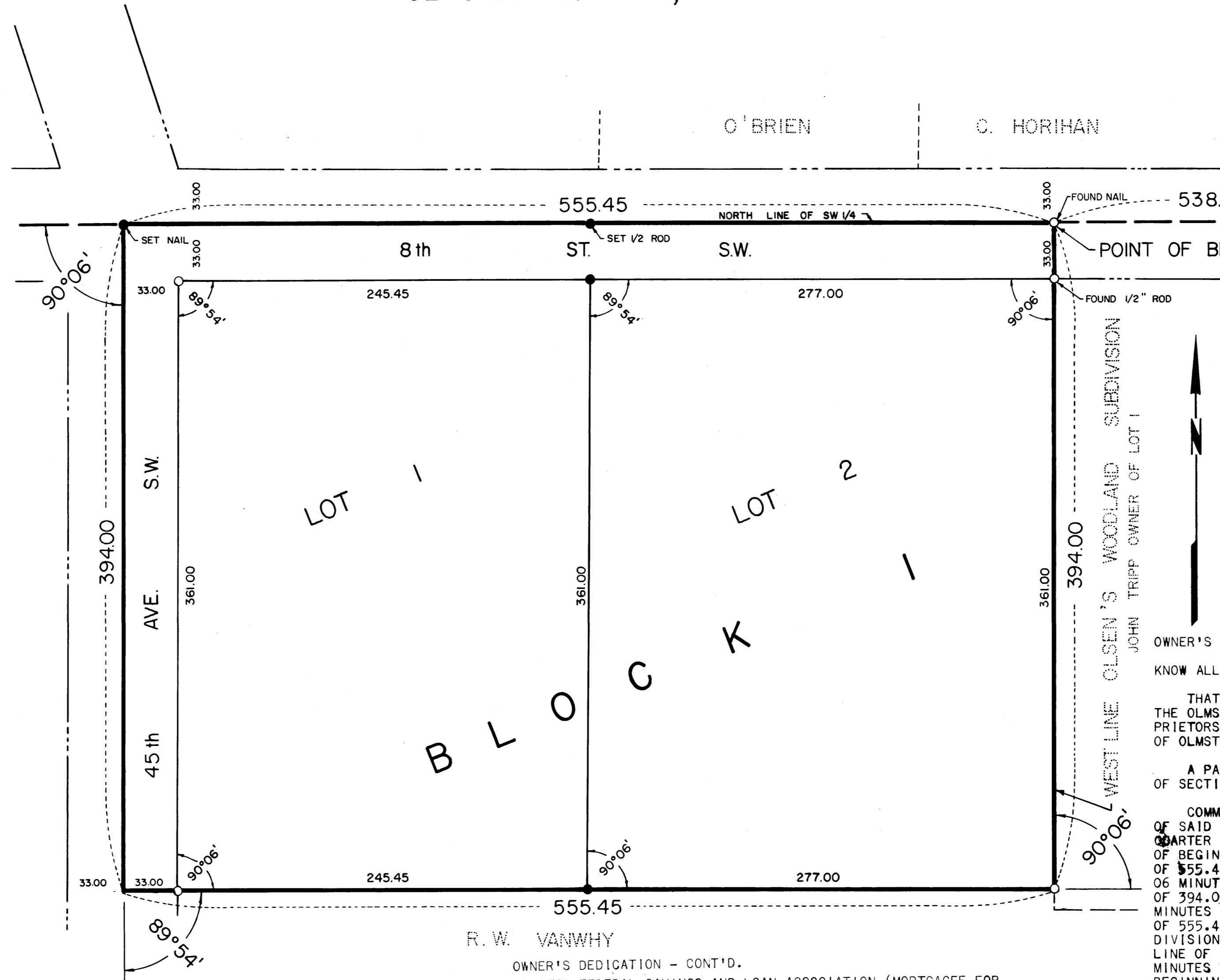
NO DELINQUENT TAXES DUE AND TRANSFER ENTERED THIS 15th DAY OF July 19 74 A.D.

Ross Browning
COUNTY AUDITOR

STATE OF MINNESOTA S.S.
COUNTY OF OLMSTED

FILED FOR RECORD THIS 15 DAY OF July 19 74 A.D. AT 3 O'CLOCK P. M. IN BOOK 307892 OF PLATS ON PAGE INSTRUMENT NO.

Harvey N. Evans
REGISTER OF DEEDS
Carole M. Baker Deputy



SCALE: 1 INCH = 50 FEET

NOTE: MONUMENTS FOUND IN PLACE SHOWN THUS: ○
MONUMENTS SET IN THIS SURVEY SHOWN THUS: ●
MONUMENTS SET ARE 5/8" IRON PIPE WITH CAP NO. 6980 UNLESS OTHERWISE NOTED.

OWNER'S DEDICATION
KNOW ALL MEN BY THESE PRESENTS:
THAT RICHARD W. VANWHY AND DORIS M. VANWHY, HIS WIFE, AND THE OLMSTED FEDERAL SAVINGS AND LOAN ASSOCIATION, OWNERS AND PROPRIETORS OF THE FOLLOWING DESCRIBED PROPERTY SITUATED IN THE COUNTY OF OLMSTED, STATE OF MINNESOTA, TO WIT:

A PART OF THE EAST ONE-HALF (E½) OF THE SOUTHWEST QUARTER (SW¼) OF SECTION 5, TOWNSHIP 106 NORTH, RANGE 14 WEST, DESCRIBED AS FOLLOWS:
COMMENCING AT THE NORTHEAST CORNER OF THE SOUTHWEST QUARTER (SW¼) OF SAID SECTION 5; THENCE WEST ALONG THE NORTH LINE OF THE SOUTHWEST QUARTER (SW¼) SAID SECTION 5, A DISTANCE OF 538.85 FEET FOR A POINT OF BEGINNING; THENCE CONTINUE WEST ALONG SAID NORTH LINE, A DISTANCE OF 555.45 FEET; THENCE SOUTH AT A DEFLECTION ANGLE OF 90 DEGREES 06 MINUTES TO THE LEFT FROM THE PREVIOUS DESCRIBED COURSE, A DISTANCE OF 394.00 FEET; THENCE EAST AT A DEFLECTION ANGLE OF 89 DEGREES 54 MINUTES TO THE LEFT FROM THE PREVIOUS DESCRIBED COURSE A DISTANCE OF 555.45 FEET TO A POINT IN THE WEST LINE OF OLSEN'S WOODLAND SUBDIVISION AS PLATTED IN OLMSTED COUNTY; THENCE NORTH ALONG THE WEST LINE OF SAID SUBDIVISION AT A DEFLECTION ANGLE OF 90 DEGREES 06 MINUTES TO THE LEFT A DISTANCE OF 394.00 FEET TO THE POINT OF BEGINNING.

CONTAINING 5.02 ACRES IN ALL.

HAVE CAUSED THE SAME TO BE SURVEYED AND PLATTED AS "VANWHY'S FIRST SUBDIVISION", AND DO HEREBY DONATE AND DEDICATE TO THE PUBLIC, FOR THE PUBLIC USE FOREVER, THE HIGHWAY RIGHT OF WAY SHOWN THEREON. IN WITNESS WHEREOF WE HAVE HEREUNTO SET OUR HANDS THIS 8th DAY OF July 19 74 A.D.

Richard W. VanWhy AND *Doris M. VanWhy*
RICHARD W. VANWHY AND DORIS M. VANWHY

STATE OF MINNESOTA S.S.
COUNTY OF OLMSTED

ON THIS 8th DAY OF July 19 74 A.D., BEFORE ME A NOTARY PUBLIC IN AND FOR SAID COUNTY PERSONALLY APPEARED RICHARD W. VANWHY AND DORIS M. VANWHY, HIS WIFE, TO ME KNOWN TO BE THE PERSONS DESCRIBED IN AND WHO EXECUTED THE SAME AS THEIR FREE ACT AND DEED.

Terrill Melchior
NOTARY PUBLIC, OLMSTED COUNTY, MINNESOTA
MY COMMISSION EXPIRES 3/27 19 75 A.D.

I HEREBY APPROVE THIS PLAT WITH THE STIPULATION THAT THE SEWAGE DISPOSAL SYSTEM SHALL BE LOCATED NEAR THE SOUTHWEST CORNER OF LOT 2.

William P. Polla
PUBLIC HEALTH ENGINEER,
OLMSTED COUNTY DEPARTMENT OF HEALTH

APPROVED BY THE OLMSTED COUNTY HIGHWAY DEPARTMENT:
Udo Schulzhammer
COUNTY ENGINEER

OWNER'S DEDICATION - CONT'D.
OLMSTED FEDERAL SAVINGS AND LOAN ASSOCIATION (MORTGAGEE FOR RICHARD W. VANWHY AND DORIS M. VANWHY)

Wm. H. Sipple - SR. VICE PRES. *Luella Hoiland* - SECRETARY
WM. H. SIPPLE - SR. VICE PRES. LUELLA HOILAND - SECRETARY

STATE OF MINNESOTA S.S.
COUNTY OF OLMSTED

ON THIS 15th DAY OF July 19 74 A.D., BEFORE ME A NOTARY PUBLIC IN AND FOR SAID COUNTY PERSONALLY APPEARED WM. H. SIPPLE AND LUELLA HOILAND, TO ME PERSONALLY KNOWN, BEING EACH BY ME DULY SWORN, DID SAY THEY ARE SENIOR VICE PRESIDENT AND SECRETARY OF THE OLMSTED FEDERAL SAVINGS AND LOAN ASSOCIATION, AND THAT SAID INSTRUMENT IS SIGNED AND SEALED IN ITS BEHALF BY AUTHORITY OF ITS MEMBERS, AND THAT SAID WM. H. SIPPLE AND LUELLA HOILAND ACKNOWLEDGE SAID INSTRUMENT TO BE THE FREE ACT AND DEED OF SAID CORPORATION.

Roger Allen McKinnis
NOTARY PUBLIC, OLMSTED COUNTY, MINNESOTA
MY COMMISSION EXPIRES December 16 19 76 A.D.

OFFICIAL PLAT

PREPARED BY:
McGHEE & BETTS, INC.
CONSULTING ENGINEERS
ROCHESTER, MINNESOTA