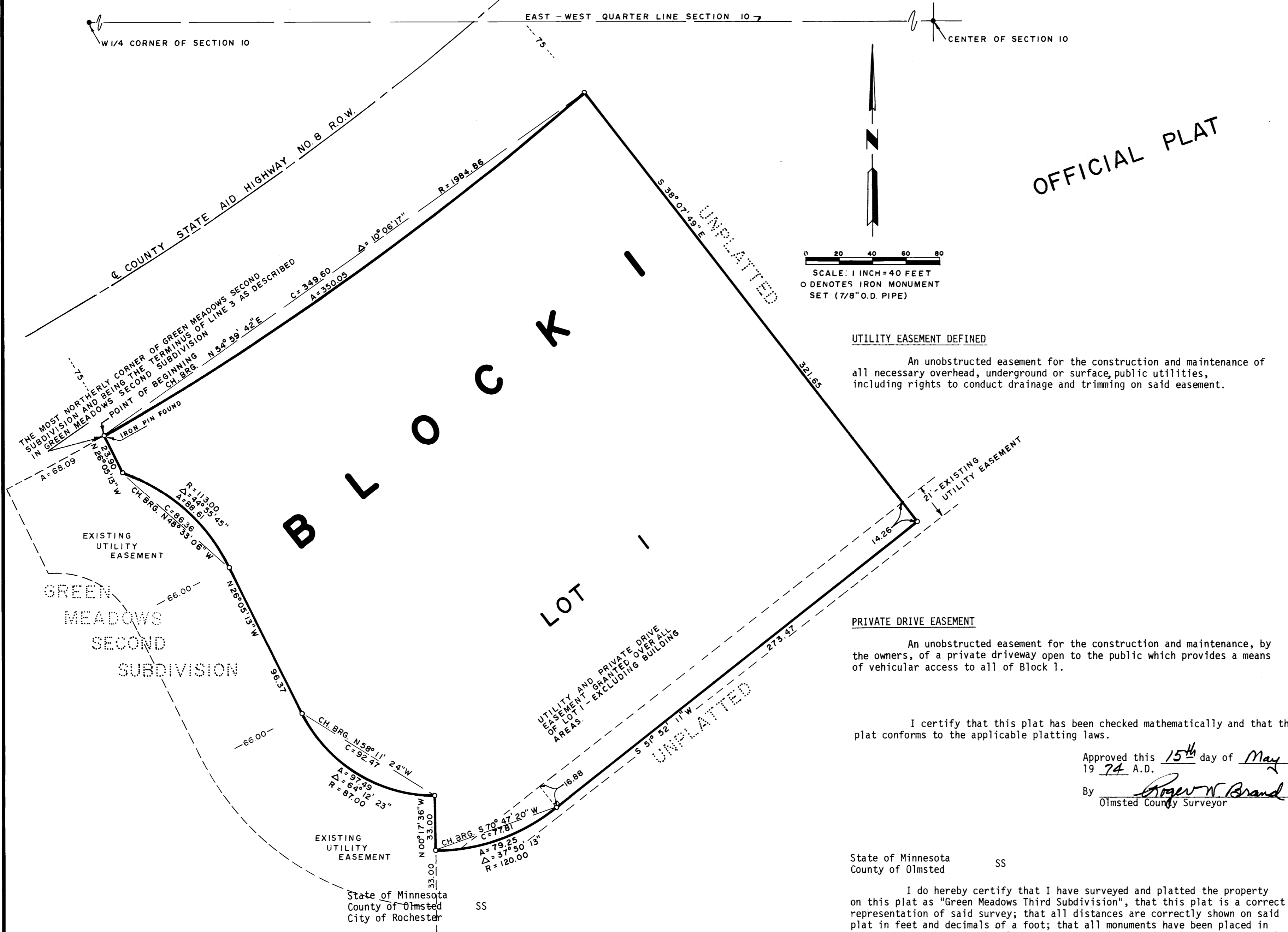


GREEN MEADOWS THIRD SUBDIVISION



KNOW ALL MEN BY THESE PRESENTS: that Lad Corporation and Home Federal Savings and Loan Association, both Minnesota Corporations, owners and proprietors of the following described property situated in the County of Olmsted, State of Minnesota, to wit:

A tract of land located in the Northeast Quarter of the Southwest Quarter of Section 10, Township 106 North, Range 14 West of the Fifth Principal Meridian in Olmsted County, Minnesota described as follows: Beginning at the most Northerly corner of Green Meadows Second Subdivision, said point being the terminus of Line 3 as described in Green Meadows Second Subdivision, thence Northeasterly along the Southeasterly right-of-way line of Olmsted County State Aid Highway No. 8 on a curve to the left on an arc distance of 350.05 feet, (Delta Angle equals 10 degrees 06 minutes 17 seconds - Radius equals 1984.86 feet - Chord bearing and distance equals North 54 degrees 59 minutes 42 seconds East 349.60 feet); (for the purpose of this description said bearing is coordinated with the assumed bearing of Green Meadows Second Subdivision, thence South 38 degrees 07 minutes 49 seconds East 321.65 feet; thence South 51 degrees 52 minutes 11 seconds West 273.47 feet; thence on a curve to the right on an arc distance of 79.25 feet (Delta Angle equals 37 degrees 50 minutes 13 seconds - Radius equals 120.00 feet - Chord bearing and distance equals South 70 degrees 47 minutes 20 seconds West 77.81 feet); thence North 00 degrees 17 minutes 36 seconds West 33.00 feet; thence, on a curve to the right an arc distance of 97.49 feet (Delta Angle equals 64 degrees 12 minutes 23 seconds - Radius equals 87.00 feet - Chord bearing and distance equals North 58 degrees 11 minutes 24 seconds West 92.47 feet); thence North 26 degrees 05 minutes 13 seconds West 96.37 feet; thence on a curve to the left an arc distance of 88.61 feet (Delta Angle equals 44 degrees 55 minutes 45 seconds - Radius equals 113.00 feet - Chord bearing and distance equals North 48 degrees 33 minutes 06 seconds West 86.36 feet); thence North 26 degrees 05 minutes 13 seconds West 23.90 feet to the point of beginning, containing 2.58 acres more or less,

have caused the same to be surveyed and platted as "GREEN MEADOWS THIRD SUBDIVISION" and do hereby grant the easements defined thereon.

In witness whereof we have hereunto set our hands and seal this day of May, 1974 A.D.

In the presence of: Lad Corporation

George A. Baihly
George A. Baihly
President

Marion K. Baihly
Marion K. Baihly
Secretary

In witness whereof we have hereunto set our hands and seal this day of May, 1974 A.D.

In the presence of: Home Federal Savings and Loan Association

R. L. Raymond
R. L. Raymond - Vice President

F. T. Ondler
F. T. Ondler - Treasurer

State of Minnesota SS
County of Olmsted

On this 15th day of May, 1974 A.D. before me a Notary Public, within and for said County and State, personally appeared George A. Baihly and Marion K. Baihly, to me personally known, who being by me each duly sworn, did say that they are respectively the President and Secretary of Lad Corporation, the Corporation named in the foregoing instrument, that the seal affixed to said instrument is the corporate seal of said corporation; and that said instrument was signed and sealed in behalf of said corporation by authority of its Board of Directors and said George A. Baihly and Marion K. Baihly acknowledge said instrument to be the free act and deed of said corporation.

George M. Libera
NOTARY PUBLIC - MINNESOTA
OLMSTED COUNTY
My Commission Expires June 27, 1974

State of Minnesota SS
County of Olmsted

On this 15th day of May, 1974 A.D. before me, a Notary Public, within and for said County and State, personally appeared R. L. Raymond and F. T. Ondler to me personally known, who being by me each duly sworn, did say that they are respectively the Vice President and Treasurer of the Home Federal Savings and Loan Association, the Corporation named in the foregoing instrument; that the seal affixed to said instrument is the corporate seal of said Corporation; and that said instrument was signed and sealed in the behalf of said Corporation by the authority of its Board of Directors and said R. L. Raymond and F. T. Ondler acknowledged said instrument to be the free act and deed of said Corporation.

George M. Libera
NOTARY PUBLIC - MINNESOTA
OLMSTED COUNTY
My Commission Expires June 27, 1974

State of Minnesota SS
County of Olmsted

UTILITY EASEMENT DEFINED

An unobstructed easement for the construction and maintenance of all necessary overhead, underground or surface, public utilities, including rights to conduct drainage and trimming on said easement.

PRIVATE DRIVE EASEMENT

An unobstructed easement for the construction and maintenance, by the owners, of a private driveway open to the public which provides a means of vehicular access to all of Block 1.

I certify that this plat has been checked mathematically and that the plat conforms to the applicable platting laws.

Approved this 15th day of May, 1974 A.D.

By Roger W. Brand
Olmsted County Surveyor

State of Minnesota SS
County of Olmsted

I do hereby certify that I have surveyed and platted the property on this plat as "Green Meadows Third Subdivision", that this plat is a correct representation of said survey; that all distances are correctly shown on said plat in feet and decimals of a foot; that all monuments have been placed in the ground as shown on the plat; that the outside boundary lines are correctly designated on the plat; and that there are no wet lands or public highways to be designated on the plat other than as shown thereon.

Surveyor Thomas Taylor

Minnesota Registration No. 6507

State of Minnesota SS
County of Olmsted

The accompanying Surveyor's Certificate was subscribed and sworn to before me, a Notary Public within and for said County and State on this day of May, 1974 A.D.

Ronald W. Yarr
Notary Public, Olmsted County, Minn.
My commission expires 12-2-78

I, Carole A. Grimm, City Clerk in and for the City of Rochester, do hereby certify that on the 15th day of July, 1974 A.D., the accompanying plat was duly approved by the Common Council of the City of Rochester. In testimony whereof, I have hereunto signed my name and affixed the seal of said City of Rochester this 22nd day of July, 1974 A.D.

Carole A. Grimm
City Clerk

No delinquent taxes due and transfer entered this 3rd day of July, 1974 A.D.

357575

Rose Browning
Olmsted County Auditor
Ruth Evans
Deputy

Filed for record this 3 day of July, 1974 A.D. at 12:12 o'clock P.M. in book 1212 of plats on page 14

Harry J. Evans
Register of Deeds
Carole M. Behr
Deputy
Olmsted County, Minnesota

PREPARED BY
YAGGY ASSOCIATES, INC.
CONSULTING ENGINEERS
ROCHESTER, MINNESOTA