

FRENCH'S FIRST SUBDIVISION

CITY OF ROCHESTER, OLMSTED COUNTY, MINNESOTA

THIS IS TO CERTIFY THAT WE, DUANE J. FRENCH AND PHYLLIS H. FRENCH, OWNERS OF THE FOLLOWING DESCRIBED PROPERTY SITUATED IN THE COUNTY OF OLMSTED, STATE OF MINNESOTA, TO WIT:

THE EAST 99.00 FEET OF THE WEST 495.00 FEET OF THE SOUTH 440.00 FEET OF THE NORTHWEST QUARTER OF SECTION 27, TOWNSHIP 107, RANGE 14, AND THE EAST 99.00 FEET OF THE WEST 594.00 FEET OF THE SOUTH 440.00 FEET OF THE NORTHWEST QUARTER OF SECTION 27, TOWNSHIP 107, RANGE 14, OLMSTED COUNTY, MINNESOTA.

HAVE CAUSED THE SAME TO BE SURVEYED AND PLATTED AS FRENCH'S FIRST SUBDIVISION AND DO HEREBY DONATE AND DEDICATE TO THE PUBLIC FOR PUBLIC USE FOREVER THE STREETS AS SHOWN ON THE PLAT, AND GRANT THE EASEMENTS DEFINED THEREON. IN WITNESS WHEREOF I HAVE HEREUNTO SET MY HAND AND SEAL THIS 8th DAY OF APRIL, 1974 A.D.

Duane J. French
DUANE J. FRENCH
Phyllis H. French
PHYLLIS H. FRENCH

STATE OF MINNESOTA]
COUNTY OF OLMSTED] SS

I DO HEREBY CERTIFY THAT I HAVE SURVEYED AND PLATTED THE PROPERTY DESCRIBED ON THIS PLAT AS FRENCH'S FIRST SUBDIVISION AND THAT THIS PLAT IS A CORRECT REPRESENTATION OF SAID SURVEY; THAT ALL DISTANCES ARE CORRECTLY SHOWN ON SAID PLAT IN FEET AND DECIMALS OF A FOOT; THAT ALL MONUMENTS HAVE BEEN CORRECTLY PLACED IN THE GROUND AS SHOWN ON THE PLAT; THAT THE OUTSIDE BOUNDARY LINES ARE CORRECTLY DESIGNATED ON THE PLAT; AND THAT THERE ARE NO WET LANDS OR PUBLIC HIGHWAYS TO BE DESIGNATED ON SAID PLAT OTHER THAN AS SHOWN THEREON.

Thomas Taylor
THOMAS TAYLOR
MINNESOTA REGISTRATION NO. 6507

STATE OF MINNESOTA]
COUNTY OF OLMSTED] SS

THE SURVEYOR'S CERTIFICATE WAS SUBSCRIBED AND SWORN TO BEFORE ME, A NOTARY PUBLIC, THIS 8th DAY OF APRIL, 1974 A.D.

Cedric Schütz
NOTARY PUBLIC, OLMSTED COUNTY, MINNESOTA
MY COMMISSION EXPIRES CEDRIC SCHÜTZ
Notary Public Olmsted County Minn.
My Commission Expires Sept. 24 1977

STATE OF MINNESOTA]
COUNTY OF OLMSTED] SS

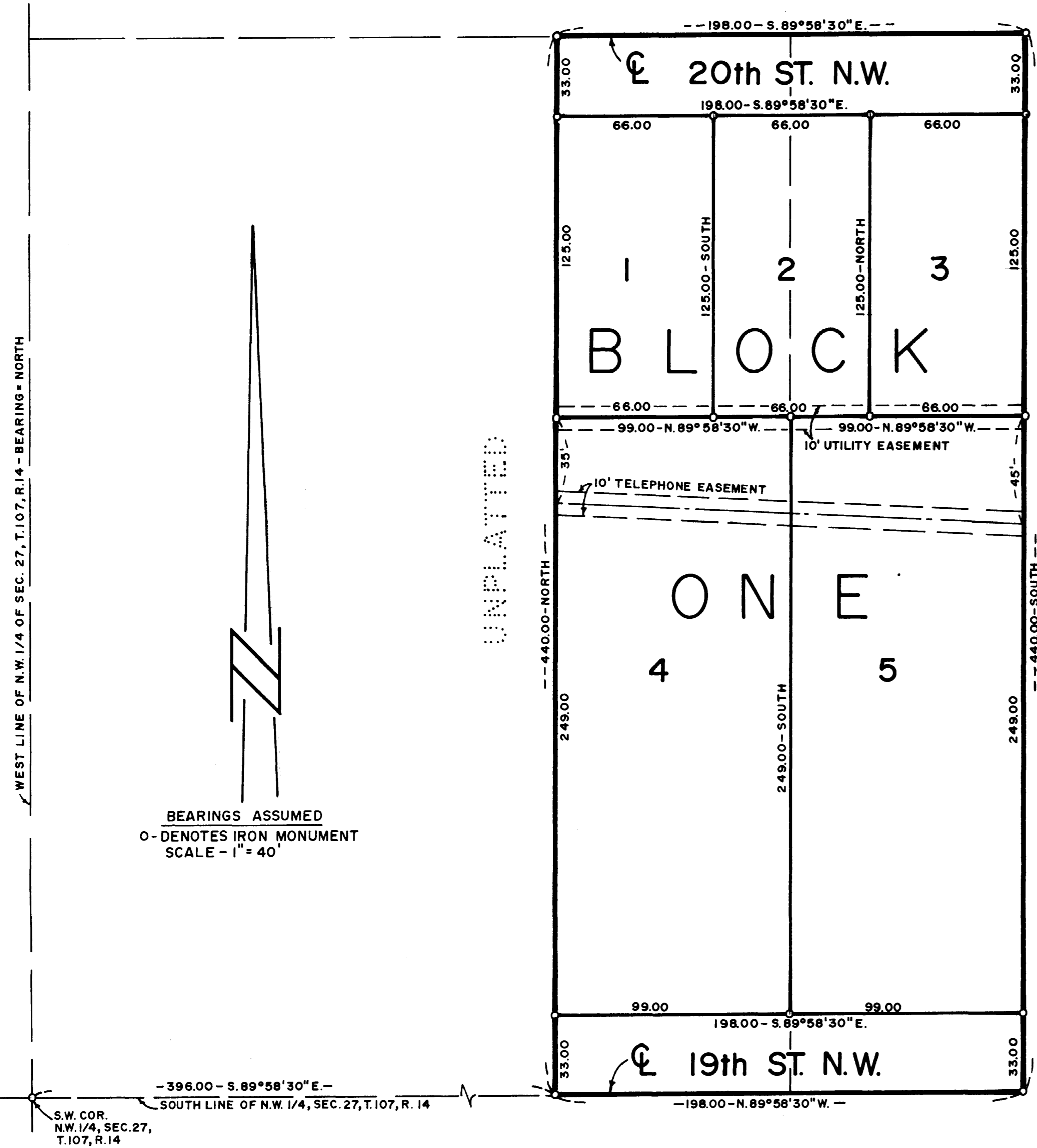
ON THIS 8th DAY OF APRIL, 1974 A.D. BEFORE ME, A NOTARY PUBLIC, WITHIN AND FOR SAID COUNTY AND STATE PERSONALLY APPEARED DUANE J. FRENCH AND PHYLLIS H. FRENCH, TO ME PERSONALLY KNOWN, AND WHO DID STATE THAT THEY ARE THE PERSONS WHO DID EXECUTE THE FOREGOING INSTRUMENT AND WHO DID AFFIRM AND ACKNOWLEDGE THAT THEY DID EXECUTE THE SAME AS THEIR OWN FREE ACT AND DEED.

Cedric Schütz
NOTARY PUBLIC, OLMSTED COUNTY, MINNESOTA
MY COMMISSION EXPIRES CEDRIC SCHÜTZ
Notary Public Olmsted County Minn.
My Commission Expires Sept. 24 1977

I CERTIFY THAT THIS PLAT HAS BEEN CHECKED MATHEMATICALLY AND THAT THE PLAT CONFORMS TO THE APPLICABLE PLATTING LAWS.

APPROVED THIS 11th DAY OF April, 1974 A.D.

Robert W. Brand
OLMSTED COUNTY SURVEYOR



35559

STATE OF MINNESOTA]
COUNTY OF OLMSTED] SS

FILED FOR RECORD THIS 7 DAY OF May, 1974 A.D. AT 1:34 O'CLOCK P.M. IN BOOK _____ OF PLATS ON PAGE _____.

Harry H. Evans
REGISTER OF DEEDS
Carol M. Baker
Deputy

NO DELINQUENT TAXES DUE AND TRANSFER ENTERED THIS 7th DAY OF May, 1974 A.D.

Ruth Evans
COUNTY AUDITOR
Ruth Evans, Deputy

UTILITY EASEMENT DEFINED:

EASEMENT FOR CONSTRUCTION AND MAINTENANCE OF ALL NECESSARY OVERHEAD, UNDERGROUND, OR SURFACE, PUBLIC AND PRIVATE UTILITIES, INCLUDING RIGHTS TO CONDUCT DRAINAGE AND TRIMMING ON SAID EASEMENT.

STATE OF MINNESOTA]
COUNTY OF OLMSTED] SS
CITY OF ROCHESTER]

I, CAROLE GRIMM, CITY CLERK IN AND FOR SAID CITY OF ROCHESTER, DO HEREBY CERTIFY THAT ON THE 16th DAY OF May, 1974 A.D., THE ACCOMPANYING AND ANNEXED PLAT WAS DULY APPROVED BY THE COMMON COUNCIL OF THE CITY OF ROCHESTER, IN TESTIMONY WHEREOF, I HAVE HEREUNTO SIGNED MY NAME AND AFFIXED THE SEAL OF SAID CITY OF ROCHESTER THIS 7th DAY OF May, 1974 A.D.

Carole A. Grimm
CITY CLERK OF THE CITY OF ROCHESTER