

HISEY'S SECOND SUBDIVISION

CITY OF CHATFIELD, OLMDSTED COUNTY, MINNESOTA

THIS IS TO CERTIFY THAT WE, GLENN E. HISEY AND MARLENE R. HISEY, OWNERS OF THE FOLLOWING DESCRIBED PROPERTY:

THOSE PARTS OF BLOCKS 1, 2, 3, 4, 5, 6, 7, 8, 9, 10, 11, 15, 16, AND 17, OF O'FERRALL'S ADDITION, AND THOSE PARTS OF BLOCKS 16, 17, 20, 21, 22, 27, AND 28 OF T. B. TWIFORD'S ADDITION IN THE CITY OF CHATFIELD, MINNESOTA, AND VACATED D, E, F, AND PRAIRIE AVENUES, CLAY, COTTAGE, COLLEGE, CLAYTON, BENNETT AND UNION STREETS IN THE CITY OF CHATFIELD, BEING IN THE SOUTH-EAST ONE-QUARTER OF THE NORTHEAST ONE-QUARTER AND THE SOUTHEAST ONE-QUARTER OF SECTION 31, TOWNSHIP 105, RANGE 11, OLMDSTED COUNTY, MINNESOTA, DESCRIBED BY METES AND BOUNDS AS FOLLOWS:

BEGINNING AT THE NORTHEAST CORNER OF SAID SOUTHEAST ONE-QUARTER OF SECTION 31; THENCE ON AN ASSUMED BEARING OF NORTH 0 DEGREES 08 MINUTES 54 SECONDS EAST ALONG THE EAST LINE OF SAID SECTION 31, A DISTANCE OF 1318.12 FEET TO THE NORTHEAST CORNER OF THE SOUTHEAST ONE-QUARTER OF THE NORTHEAST ONE-QUARTER OF SECTION 31; THENCE NORTH 89 DEGREES 36 MINUTES 17 SECONDS WEST ALONG THE NORTH LINE OF SAID SOUTHEAST ONE-QUARTER OF THE NORTHEAST ONE-QUARTER OF SECTION 31, A DISTANCE OF 131.43 FEET TO A POINT ON THE SOUTHEASTLY RIGHT OF WAY LINE OF COUNTY STATE AID HIGHWAY NO. 10; THENCE ALONG SAID RIGHT OF WAY ON A CURVE TO THE RIGHT WHICH HAS A RADIUS OF 4467.37 FEET AND A DELTA ANGLE OF 9 DEGREES 06 MINUTES 28 SECONDS, ON A CHORD BEARING OF SOUTH 42 DEGREES 03 MINUTES 21 SECONDS WEST A CHORD DISTANCE OF 709.39 FEET; THENCE SOUTH 46 DEGREES 36 MINUTES 35 SECONDS WEST ALONG SAID RIGHT OF WAY LINE 987.84 FEET; THENCE SOUTH 0 DEGREES 03 MINUTES 47 SECONDS EAST, 103.26 FEET; THENCE SOUTH 89 DEGREES 32 MINUTES 51 SECONDS EAST, 69.17 FEET; THENCE SOUTH 0 DEGREES 03 MINUTES 47 SECONDS EAST, 366.09 FEET; THENCE SOUTH 89 DEGREES 47 MINUTES 37 SECONDS WEST, 174.99 FEET; THENCE SOUTH 0 DEGREES 03 MINUTES 46 SECONDS EAST, 235.83 FEET TO THE NORTH LINE OF HISEY'S FIRST SUBDIVISION; THENCE SOUTH 89 DEGREES 32 MINUTES 26 SECONDS EAST ALONG SAID NORTH LINE, 174.99 FEET; THENCE NORTH 17 DEGREES 28 MINUTES 24 SECONDS EAST 430.86 FEET; THENCE NORTH 64 DEGREES 31 MINUTES 25 SECONDS EAST, 611.00 FEET; THENCE SOUTH 64 DEGREES 41 MINUTES 15 SECONDS EAST, 630.87 FEET TO THE EAST LINE OF SAID SECTION 31; THENCE NORTH 0 DEGREES 02 MINUTES 20 SECONDS WEST ALONG SAID EAST LINE, 190.00 FEET TO THE POINT OF BEGINNING. SUBJECT TO HIGHWAY AND UTILITY EASEMENTS OF RECORD.

HAVE CAUSED SAID TRACT OF LAND TO BE SURVEYED AND PLATTED AND TO BE HEREAFTER KNOWN AS "HISEY'S SECOND SUBDIVISION" AND WE DO HEREBY DONATE AND DEDICATE TO THE PUBLIC FOR PUBLIC USE FOREVER THE STREETS, CIRCLES, AND ROADS AND EASEMENTS SHOWN AND DEFINED THEREON. IN WITNESS WHEREOF WE HAVE HEREUNTO SET OUR HANDS THIS 8TH DAY OF APRIL, 1974 A.D.

Glenn E. Hisey
GLENN E. HISEY

Marlene R. Hisey
MARLENE R. HISEY

STATE OF MINNESOTA] SS
COUNTY OF OLMDSTED]

I DO HEREBY CERTIFY THAT I HAVE SURVEYED AND PLATTED THE PROPERTY DESCRIBED ON THIS PLAT AS HISEY'S SECOND SUBDIVISION AND THAT THIS PLAT IS A TRUE AND CORRECT REPRESENTATION OF SAID SURVEY; THAT ALL DISTANCES ARE CORRECTLY SHOWN ON SAID PLAT IN FEET AND DECIMALS OF A FOOT; THAT ALL MONUMENTS HAVE BEEN CORRECTLY PLACED IN THE GROUND AS SHOWN ON THE PLAT; THAT THE OUTSIDE BOUNDARY LINES ARE CORRECTLY DESIGNATED ON THE PLAT; AND THAT THERE ARE NO WET LANDS OR PUBLIC HIGHWAYS TO BE DESIGNATED ON SAID PLAT OTHER THAN AS SHOWN THEREON.

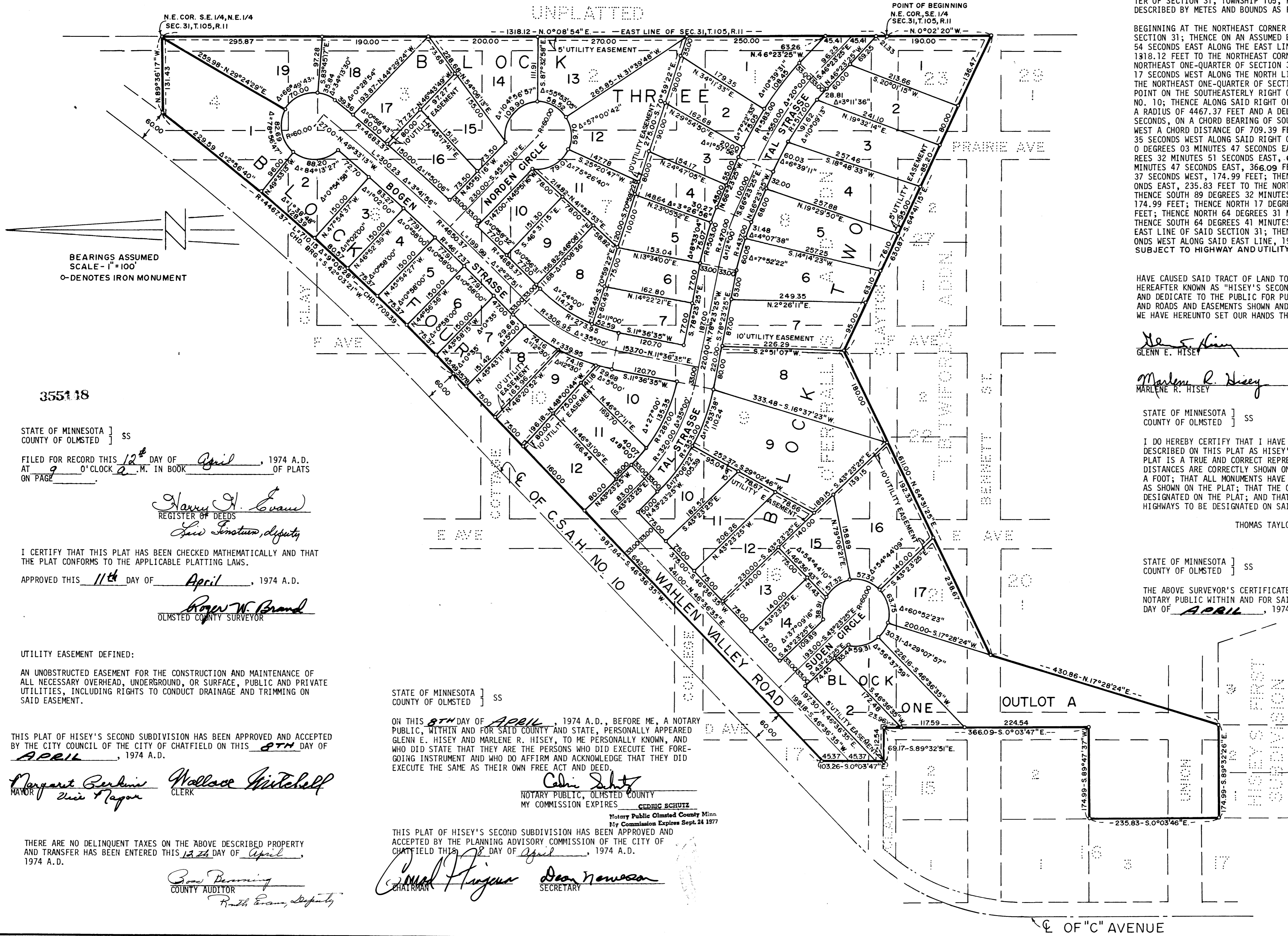
THOMAS TAYLOR
MINNESOTA REGISTRATION NO. 6507

STATE OF MINNESOTA] SS
COUNTY OF OLMDSTED]

THE ABOVE SURVEYOR'S CERTIFICATE WAS SUBSCRIBED AND SWORN TO ME, A NOTARY PUBLIC WITHIN AND FOR SAID COUNTY AND STATE ON THIS 8TH DAY OF APRIL, 1974 A.D.

Cedric Schuitz
NOTARY PUBLIC, OLMDSTED COUNTY
MY COMMISSION EXPIRES

Cedric Schuitz
Notary Public Olmsted County Minn
My Commission Expires Sept. 24 1977



BEARINGS ASSUMED
SCALE - 1" = 100'
O - DENOTES IRON MONUMENT

355118

STATE OF MINNESOTA] SS
COUNTY OF OLMDSTED]
FILED FOR RECORD THIS 12TH DAY OF April, 1974 A.D.
AT 9 O'CLOCK A.M. IN BOOK _____ OF PLATS
ON PAGE _____

Harry J. Evans
REGISTER OF DEEDS
Lawson, Deputy

I CERTIFY THAT THIS PLAT HAS BEEN CHECKED MATHEMATICALLY AND THAT THE PLAT CONFORMS TO THE APPLICABLE PLATTING LAWS.

APPROVED THIS 11TH DAY OF April, 1974 A.D.

Ray W. Brand
OLMDSTED COUNTY SURVEYOR

UTILITY EASEMENT DEFINED:
AN UNOBSTRUCTED EASEMENT FOR THE CONSTRUCTION AND MAINTENANCE OF ALL NECESSARY OVERHEAD, UNDERGROUND, OR SURFACE, PUBLIC AND PRIVATE UTILITIES, INCLUDING RIGHTS TO CONDUCT DRAINAGE AND TRIMMING ON SAID EASEMENT.

THIS PLAT OF HISEY'S SECOND SUBDIVISION HAS BEEN APPROVED AND ACCEPTED BY THE CITY COUNCIL OF THE CITY OF CHATFIELD ON THIS 8TH DAY OF APRIL, 1974 A.D.

Margaret Berkinis Mayor
Wallace Mitchell Clerk
Wesley Taylor

STATE OF MINNESOTA] SS
COUNTY OF OLMDSTED]
ON THIS 8TH DAY OF APRIL, 1974 A.D., BEFORE ME, A NOTARY PUBLIC, WITHIN AND FOR SAID COUNTY AND STATE, PERSONALLY APPEARED GLENN E. HISEY AND MARLENE R. HISEY, TO ME PERSONALLY KNOWN, AND WHO DID STATE THAT THEY ARE THE PERSONS WHO DID EXECUTE THE FOREGOING INSTRUMENT AND WHO DO AFFIRM AND ACKNOWLEDGE THAT THEY DID EXECUTE THE SAME AS THEIR OWN FREE ACT AND DEED.

Cedric Schuitz
NOTARY PUBLIC, OLMDSTED COUNTY
MY COMMISSION EXPIRES

THIS PLAT OF HISEY'S SECOND SUBDIVISION HAS BEEN APPROVED AND ACCEPTED BY THE PLANNING ADVISORY COMMISSION OF THE CITY OF CHATFIELD THIS 8 DAY OF April, 1974 A.D.

Conrad Flanagan Chairman
Dean Newson Secretary

THERE ARE NO DELINQUENT TAXES ON THE ABOVE DESCRIBED PROPERTY AND TRANSFER HAS BEEN ENTERED THIS 13TH DAY OF April, 1974 A.D.
Ernie Branning County Auditor
Ruth Evans, Deputy