

MEADOW PARK NINTH SUBDIVISION ROCHESTER, MINNESOTA

SURVEYOR'S CERTIFICATE

STATE OF MINNESOTA ) s.s. COUNTY OF OLMSTED )

I DO HEREBY CERTIFY THAT I HAVE SURVEYED AND PLATTED THE PROPERTY DESCRIBED ON THIS PLAT AS "MEADOW PARK NINTH SUBDIVISION"; THAT THIS IS A CORRECT REPRESENTATION OF SAID SURVEY...

SURVEYOR K.M. McElhinne MINNESOTA REGISTRATION NO. 1613

STATE OF MINNESOTA ) s.s. COUNTY OF OLMSTED )

THE ABOVE SURVEYOR'S CERTIFICATE WAS SUBSCRIBED AND SWORN TO BEFORE ME, A NOTARY PUBLIC WITHIN AND FOR SAID COUNTY AND STATE ON THIS 23 DAY OF May 1973 A.D.

NOTARY PUBLIC, OLMSTED COUNTY, MINNESOTA HOWARD E. HUNT My Commission Expires Dec. 9, 1978 19 A.D.

COUNTY SURVEYOR'S CERTIFICATE OF APPROVAL

I CERTIFY THAT THIS PLAT HAS BEEN CHECKED MATHEMATICALLY AND THAT THE PLAT CONFORMS TO THE APPLICABLE PLATTING LAWS.

APPROVED THIS 14th DAY OF June 1973 A.D.

Robert W. Brand OLMSTED COUNTY SURVEYOR

STATE OF MINNESOTA ) s.s. COUNTY OF OLMSTED ) CITY OF ROCHESTER )

I, ELFREDA REITER, CITY CLERK IN AND FOR THE CITY OF ROCHESTER, DO HEREBY CERTIFY THAT ON THE 2nd DAY OF July 1973 A.D. THE ACCOMPANYING PLAT WAS DULY APPROVED BY THE COMMON COUNCIL OF THE CITY OF ROCHESTER...

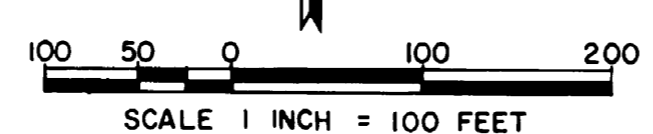
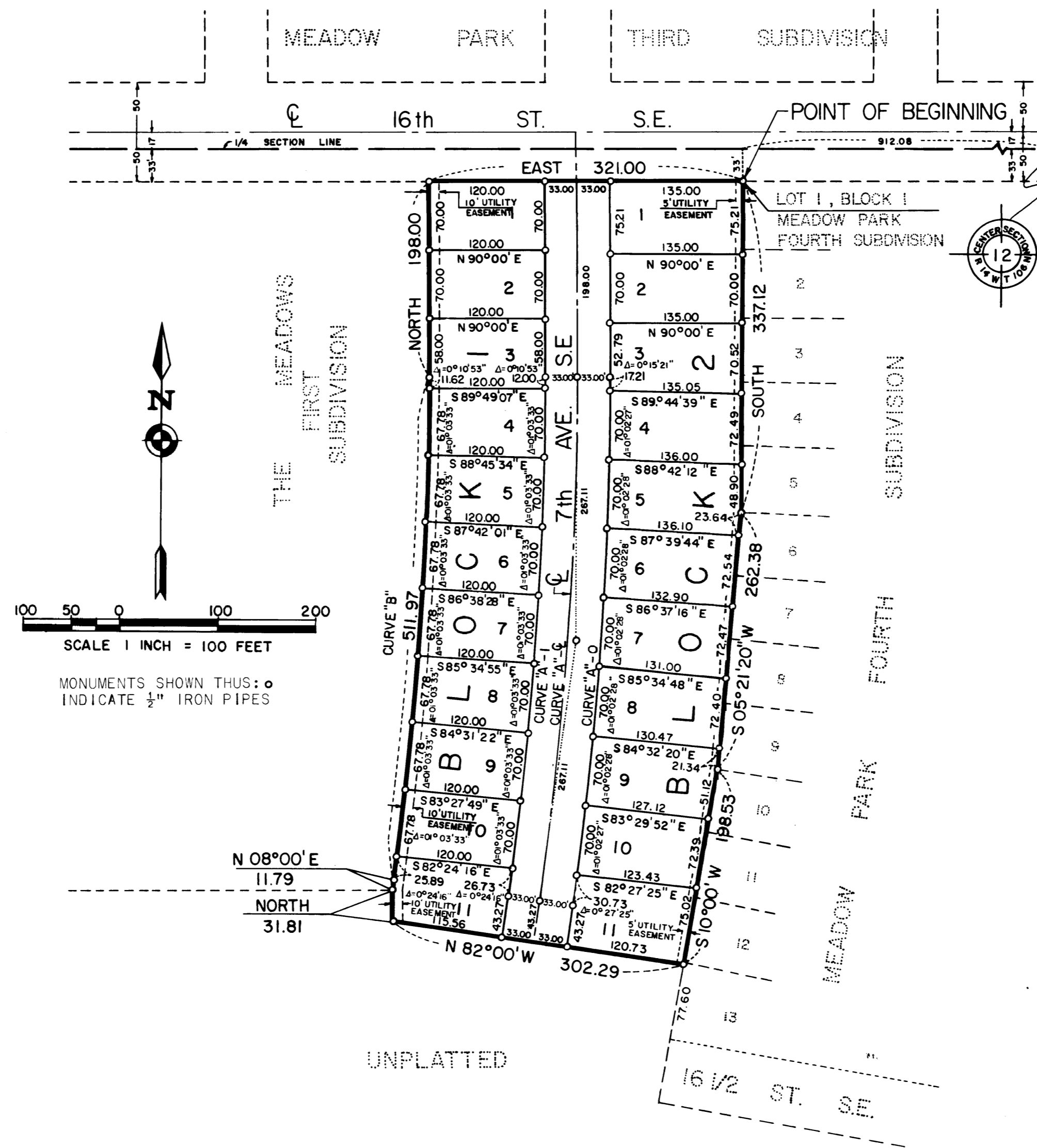
Elfreda Reiter CITY CLERK

NO DELINQUENT TAXES DUE AND TRANSFER ENTERED THIS 10th DAY OF September 1973 A.D.

Ross Brauning COUNTY AUDITOR Doc. No. 21702

FILED FOR RECORD THIS 10th DAY OF September 1973 A.D., AT 4 O'CLOCK P.M. IN BOOK OF PLATS, ON PAGE

Raymond E. Eneman REGISTRAR OF TITLES Seymour P. Sulger, Deputy



MONUMENTS SHOWN THUS: o INDICATE 1/2" IRON PIPES

Table with 6 columns: CURVE, DELTA, DEGREE, LENGTH, TANGENT, RADIUS. Rows include curves A-0, A-1, A-O, and B.

UTILITY EASEMENT DEFINED: AN UNOBSTRUCTED EASEMENT FOR THE CONSTRUCTION AND MAINTENANCE OF ALL NECESSARY OVERHEAD, UNDERGROUND OR SURFACE, PRIVATE AND PUBLIC UTILITIES...

OWNERS DEDICATION: KNOW ALL MEN BY THESE PRESENTS: THAT THE KRUSE COMPANY AND THE MAYO FOUNDATION, OWNERS AND PROPRIETORS OF THE FOLLOWING DESCRIBED PROPERTY SITUATED IN THE CITY OF ROCHESTER, STATE OF MINNESOTA, TO WIT:

A PART OF THE SOUTHWEST QUARTER OF SECTION 12, TOWNSHIP 106 NORTH, RANGE 14 WEST, IN THE CITY OF ROCHESTER, OLMSTED COUNTY, STATE OF MINNESOTA, DESCRIBED AS FOLLOWS: BEGINNING AT THE NORTHWEST CORNER OF LOT 1, BLOCK 1, MEADOW PARK FOURTH SUBDIVISION...

CONTAINING 5.66 ACRES HAVE CAUSED THE SAME TO BE SURVEYED AND PLATTED AS "MEADOW PARK NINTH SUBDIVISION", AND DO HEREBY DONATE AND DEDICATE TO THE PUBLIC USE FOREVER THE AVENUE SHOWN THEREON AND GRANT THE EASEMENTS DEFINED THEREON...

IN THE PRESENCE OF: THE KRUSE COMPANY John Lipe AND Gary Shaw H.E. Payne H.E. Payne, PRESIDENT John Lipe AND Gary Shaw H.W. Hodge H.W. Hodge, SECRETARY-TREASURER

STATE OF MINNESOTA ) s.s. COUNTY OF OLMSTED ) ON THIS 12th DAY OF June 1973 A.D., BEFORE ME A NOTARY PUBLIC IN AND FOR SAID COUNTY, PERSONALLY APPEARED H.E. PAYNE AND H.W. HODGE, TO ME PERSONALLY KNOWN, BEING EACH BY ME DULY SWORN, DID SAY THEY ARE PRESIDENT AND SECRETARY-TREASURER OF THE KRUSE COMPANY...

IN THE PRESENCE OF: THE MAYO FOUNDATION Jennie Turula AND Lois Higgins J.W. Harwick, VICE CHAIRMAN Lois Muckelme AND Kathleen Mitchell Gregg S. Orwoll, ASST. SECRETARY

STATE OF MINNESOTA ) s.s. COUNTY OF OLMSTED ) ON THIS 13th DAY OF June 1973 A.D., BEFORE ME A NOTARY PUBLIC IN AND FOR SAID COUNTY, PERSONALLY APPEARED J.W. HARWICK AND GREGG S. ORWOLL, TO ME PERSONALLY KNOWN, BEING EACH BY ME DULY SWORN, DID SAY THEY ARE VICE CHAIRMAN AND ASST. SECRETARY OF THE MAYO FOUNDATION...

OFFICIAL PLAT