

HISEY'S FIRST SUBDIVISION

CITY OF CHATFIELD, OLMSTED COUNTY, MINNESOTA

THIS IS TO CERTIFY THAT WE, GLENN E. HISEY AND MARLENE R. HISEY, OWNERS OF THE FOLLOWING DESCRIBED PROPERTY:

THOSE PARTS OF BLOCK 17, 18 AND 20, AND VACATED "D" AVENUE AND CLIFF STREET AS PLATTED IN T.B. TWIFORD'S ADDITION, CITY OF CHATFIELD, OLMSTED COUNTY, MINNESOTA, DESCRIBED AS FOLLOWS:

COMMENCING AT THE SOUTHEAST CORNER OF SOUTHEAST ONE-QUARTER OF SECTION 31, TOWNSHIP 105, RANGE 11; THENCE ON AN ASSUMED BEARING OF NORTH 89 DEGREES 32 MINUTES 20 SECONDS WEST ALONG THE SOUTH LINE OF SAID SOUTHEAST ONE-QUARTER, 1570.73 FEET; THENCE NORTH 0 DEGREES 03 MINUTES 46 SECONDS WEST, 1394.97 FEET TO THE SOUTH-WEST CORNER OF BLOCK 18 OF T.B. TWIFORD'S ADDITION FOR A POINT OF BEGINNING; THENCE SOUTH 89 DEGREES 32 MINUTES 26 SECONDS EAST ALONG THE SOUTH LINE OF SAID BLOCK 18, 325.00 FEET; THENCE NORTH 0 DEGREES 03 MINUTES 46 SECONDS WEST, 19.73 FEET; THENCE SOUTH 89 DEGREES 32 MINUTES 26 SECONDS EAST, 19.73 FEET; THENCE ALONG A CURVE TO THE LEFT WHICH HAS A RADIUS OF 60 FEET AND A DELTA ANGLE OF 60 DEGREES 0 MINUTES AN ARC DISTANCE OF 62.83 FEET; THENCE SOUTH 89 DEGREES 32 MINUTES 26 SECONDS EAST, 180.00 FEET; THENCE NORTH 18 DEGREES 46 MINUTES 46 SECONDS WEST, 317.73 FEET; THENCE NORTH 89 DEGREES 32 MINUTES 26 SECONDS WEST, 325.00 FEET; THENCE SOUTH 0 DEGREES 03 MINUTES 46 SECONDS EAST, 330.00 FEET TO THE SOUTHERLY RIGHT OF WAY LINE OF CLIFF STREET; THENCE NORTH 89 DEGREES 32 MINUTES 26 SECONDS WEST ALONG SAID SOUTHERLY RIGHT OF WAY LINE 300.00 FEET TO THE POINT OF BEGINNING.

HAVE CAUSED SAID TRACT OF LAND TO BE SURVEYED AND PLATTED AND TO BE HEREAFTER KNOWN AS "HISEY'S FIRST SUBDIVISION" AND WE DO HEREBY DONATE AND DEDICATE TO THE PUBLIC FOR PUBLIC USE FOREVER THE STREET AND EASEMENTS SHOWN AND DEFINED THEREON. IN WITNESS WHEREOF WE HAVE HERETO SET OUR HANDS THIS 10TH DAY OF AUGUST, 1973 A.D.

Glenn E. Hisey
GLENN E. HISEY
Marlene R. Hisey
MARLENE R. HISEY

STATE OF MINNESOTA]
COUNTY OF OLMSTED] SS

I DO HEREBY CERTIFY THAT I HAVE SURVEYED AND PLATTED THE PROPERTY DESCRIBED ON THIS PLAT AS HISEY'S FIRST SUBDIVISION AND THAT THIS PLAT IS A TRUE AND CORRECT REPRESENTATION OF SAID SURVEY; THAT ALL DISTANCES ARE CORRECTLY SHOWN ON SAID PLAT IN FEET AND DECIMALS OF A FOOT; THAT ALL MONUMENTS HAVE BEEN CORRECTLY PLACED IN THE GROUND AS SHOWN ON THE PLAT; THAT THE OUTSIDE BOUNDARY LINES ARE CORRECTLY DESIGNATED ON THE PLAT; AND THAT THERE ARE NO WET LANDS OR PUBLIC HIGHWAYS TO BE DESIGNATED ON SAID PLAT OTHER THAN AS SHOWN THEREON.

Thomas Taylor
THOMAS TAYLOR
MINNESOTA REGISTRATION NO. 6507

STATE OF MINNESOTA]
COUNTY OF OLMSTED] SS

THE ABOVE SURVEYOR'S CERTIFICATE WAS SUBSCRIBED AND SWORN TO ME, A NOTARY PUBLIC WITHIN AND FOR SAID COUNTY AND STATE ON THIS 10TH DAY OF AUGUST, 1973 A.D.

Cedric Schultz
NOTARY PUBLIC, OLMSTED COUNTY
MY COMMISSION EXPIRES 9/24/77

STATE OF MINNESOTA]
COUNTY OF OLMSTED] SS

ON THIS 10TH DAY OF AUGUST, 1973 A.D., BEFORE ME, A NOTARY PUBLIC, WITHIN AND FOR SAID COUNTY AND STATE, PERSONALLY APPEARED GLENN E. HISEY AND MARLENE R. HISEY, TO ME PERSONALLY KNOWN, AND WHO DID STATE THAT THEY ARE THE PERSONS WHO DID EXECUTE THE FOREGOING INSTRUMENT AND WHO DO AFFIRM AND ACKNOWLEDGE THAT THEY DID EXECUTE THE SAME AS THEIR OWN FREE ACT AND DEED.

Cedric Schultz
NOTARY PUBLIC, OLMSTED COUNTY
MY COMMISSION EXPIRES 9/24/77

THIS PLAT OF HISEY'S FIRST SUBDIVISION HAS BEEN APPROVED AND ACCEPTED BY THE PLANNING ADVISORY COMMISSION OF THE CITY OF CHATFIELD THIS 27th DAY OF JULY, 1973 A.D.

Robert A. Katz CHAIRMAN
Dean Narvean SECRETARY

THIS PLAT OF HISEY'S FIRST SUBDIVISION HAS BEEN APPROVED AND ACCEPTED BY THE CITY COUNCIL OF THE VILLAGE OF CHATFIELD ON THIS 23rd DAY OF JULY, 1973 A.D.

Peter Harwood MAYOR
W.R. Mitchell CLERK

THERE ARE NO DELINQUENT TAXES ON THE ABOVE DESCRIBED PROPERTY AND TRANSFER HAS BEEN ENTERED THIS 18th DAY OF OCTOBER, 1973 A.D.

Road Snowing COUNTY AUDITOR
Ruth Evans DEPUTY

STATE OF MINNESOTA]
COUNTY OF OLMSTED] SS 353.536

FILED FOR RECORD THIS 18 DAY OF OCTOBER, 1973 A.D.
AT 12:12 O'CLOCK P.M. IN BOOK OF PLATS
ON PAGE

Harry W. Evans REGISTER OF DEEDS
Carole M. Baker DEPUTY

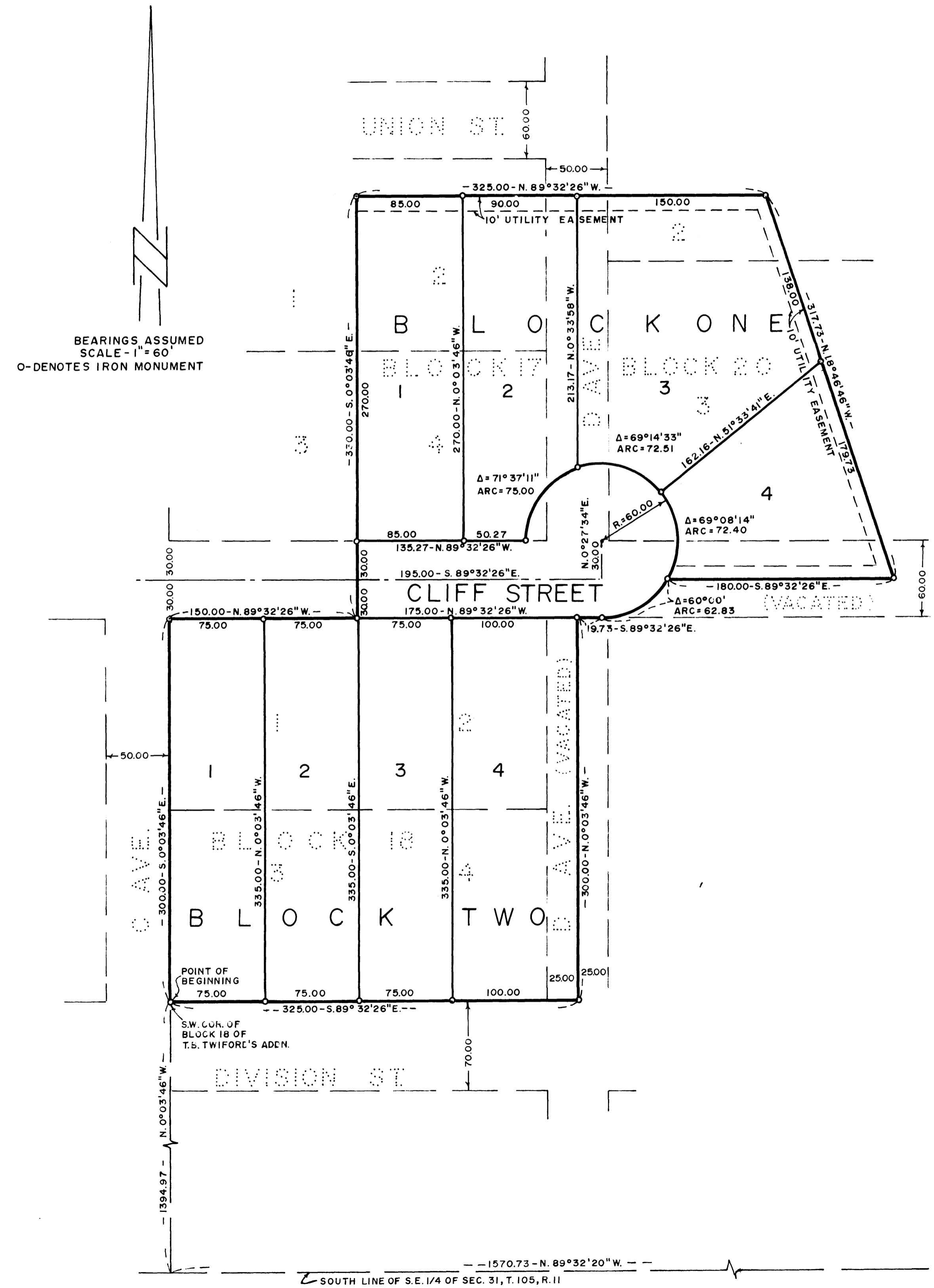
I CERTIFY THAT THIS PLAT HAS BEEN CHECKED MATHEMATICALLY AND THAT THE PLAT CONFORMS TO THE APPLICABLE PLATTING LAWS.

APPROVED THIS 13th DAY OF AUG., 1973 A.D.

Roger W. Brand
OLMSTED COUNTY SURVEYOR

UTILITY EASEMENT DEFINED:

AN UNOBSTRUCTED EASEMENT FOR THE CONSTRUCTION AND MAINTENANCE OF ALL NECESSARY OVERHEAD, UNDERGROUND, OR SURFACE, PUBLIC AND PRIVATE UTILITIES, INCLUDING RIGHTS TO CONDUCT DRAINAGE AND TRIMMING ON SAID EASEMENT.



(3/4" X 1" BAR)
S.E. COR. OF
S.E. 1/4, SEC. 31
T. 105, R. 11

SOUTH LINE OF S.E. 1/4 OF SEC. 31, T. 105, R. 11