

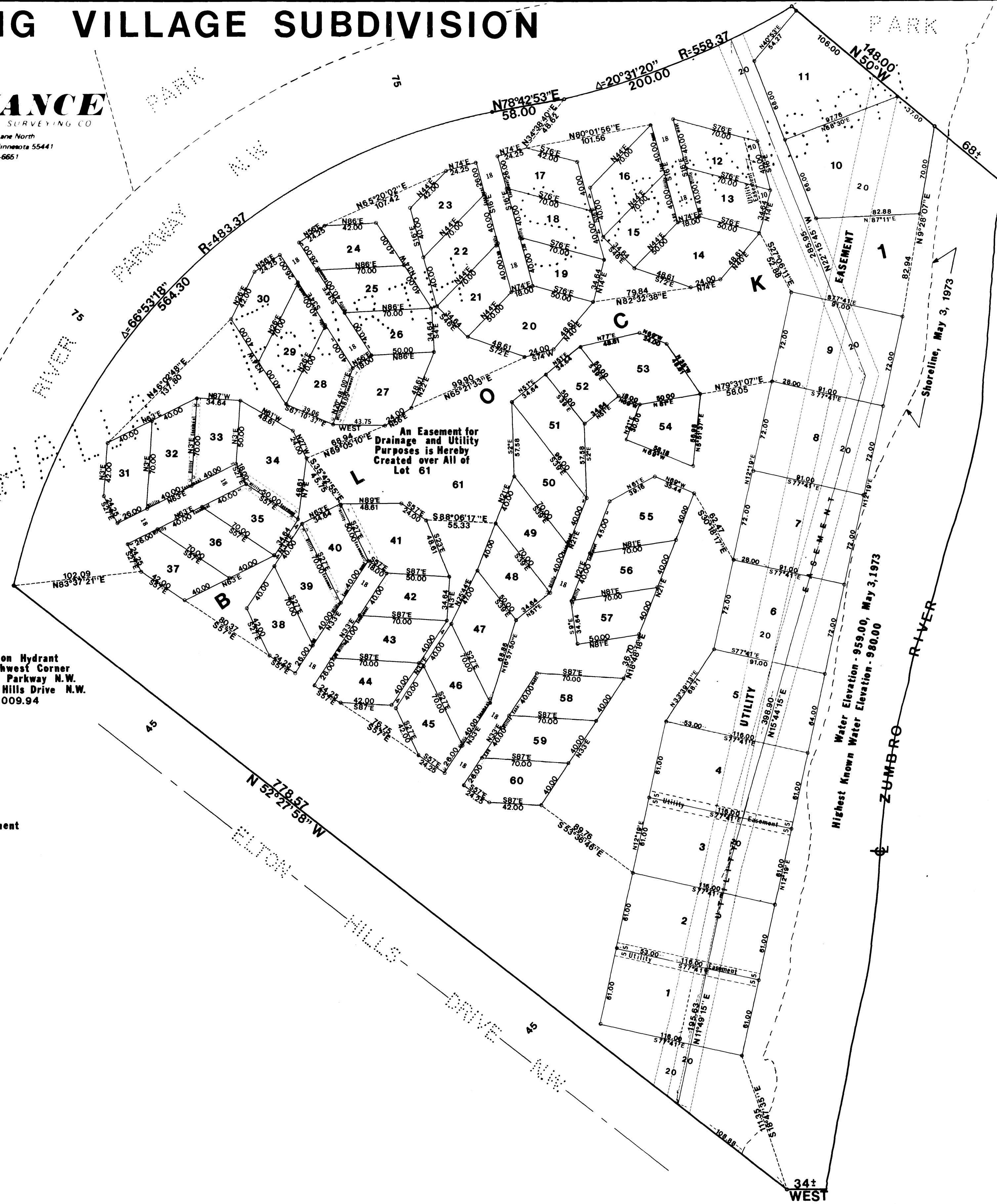
VIKING VILLAGE SUBDIVISION

ADVANCE
ENGINEERING & SURVEYING CO.
3030 Harbor Lane North
Minneapolis, Minnesota 55441
Tel 16121 546-6661

N

BM Arrow on Hydrant
at the Southwest Corner
of W. River Parkway N.W.
and Elton Hills Drive N.W.
Elevation 1009.94

SCALE: 1" = 50'
0 50 100
"o" Denotes Iron Monument



KNOW all men by these presents that Metro Development Corp., a Minnesota Corporation, owner and proprietor and Olmsted Federal Savings and Loan Association of Rochester, mortgagee of the following described tract of land lying in Section 26, Township 107, Range 14, County of Olmsted, State of Minnesota, and more particularly described as follows:

Lot 1, Block 6, Valhalla Fourth Subdivision

Have caused the same to be surveyed and replatted as VIKING VILLAGE SUBDIVISION and do hereby donate and dedicate to the public for public use forever the Easements for utility and drainage purposes as shown on the plat. In witness whereof said Metro Development Corp. has caused these presents to be signed by its proper officers and its corporate seal to be hereunto affixed this 10th day of AUGUST, A.D. 1973. In witness whereof said Olmsted Federal Savings and Loan Association of Rochester has caused these presents to be signed by its proper officers and its corporate seal to be hereunto affixed this 10th day of AUGUST, A.D. 1973.

In presence of: [Signature] by Kenneth L. Weststrand its Pres.
[Signature] by Dennis Weststrand its V.P.
In presence of: [Signature] by Ann Sjogren its Sec. Vice President
[Signature] by Paula Holand its Secretary

STATE OF MINNESOTA
COUNTY OF HENNEPIN
On this 10th day of AUGUST, A.D. 1973, before me a Notary Public, personally appeared Kenneth L. Weststrand and Dennis Weststrand, to me personally known who by me each duly sworn did say that they are PRESIDENT and Vice President of Metro Development Corp., the corporation named in the foregoing instrument, that the corporate seal affixed to said instrument is the corporate seal of said corporation and that said instrument was signed and sealed in behalf of said corporation by authority of its Board of Directors and said Kenneth L. Weststrand and Dennis Weststrand acknowledged said instrument to be the free act and deed of said corporation.

[Signature]
Notary Public, Hennepin County, Minnesota
My Commission Expires May 18, 1974

STATE OF MINNESOTA
COUNTY OF OLMTSTED
On this 14th day of August, A.D. 1973, before me a Notary Public, personally appeared Ann Sjogren and Paula Holand, to me personally known who by me each duly sworn did say that they are Secretary and Secretary of Olmsted Federal Savings and Loan Association of Rochester, the corporation named in the foregoing instrument, that the corporate seal affixed to said instrument is the corporate seal of said corporation and that said instrument was signed and sealed in behalf of said corporation by authority of its Board of Directors and said Ann Sjogren and Paula Holand acknowledged said instrument to be the free act and deed of said corporation.

[Signature]
Notary Public, Olmsted County, Minnesota
My Commission Expires December 16, 1976

I hereby certify that I have surveyed and replatted the property described on this plat as VIKING VILLAGE SUBDIVISION; that this plat is a correct representation of said survey; that all distances are correctly shown on the plat in feet and decimals of a foot; that all monuments have been correctly placed in the ground as shown on the plat; that the outside boundary lines are correctly designated on said plat; and that there are no wet lands except as shown hereon.
[Signature]
Surveyor - Minnesota Registration No. 9235

STATE OF MINNESOTA
COUNTY OF HENNEPIN
The surveyor's certificate subscribed and sworn to before me, a Notary Public, this 10th day of AUGUST, A.D. 1973.
[Signature]
Notary Public, Hennepin County, Minnesota
My Commission Expires May 18, 1974

I hereby certify that this plat has been checked mathematically and that the plat conforms to the applicable platting laws.
Approved this 21st day of Aug., A.D. 1973
By [Signature]
Olmsted County Surveyor

I hereby certify that on the 4th day of September, A.D. 1973, the accompanying plat was duly approved by the Common Council of the City of Rochester. In testimony whereof I have hereunto signed my name and affixed the seal of said City of Rochester this 2nd day of September, A.D. 1973.
[Signature]
City Clerk, Rochester, Minnesota

No delinquent taxes due and transfer entered this 10th day of September, A.D. 1973.
[Signature]
County Auditor
[Signature]
County Treasurer

Filed for record this 11 day of September, A.D. 1973 at 8 O'Clock a.m.
In book _____ of plats on page _____ Instrument no. _____
[Signature]
Register of Deeds [Signature], Deputy

UTILITY EASEMENT DEFINED:
An unobstructed easement for the construction and maintenance of all necessary overhead, underground or surface, private and public utilities, including rights to conduct drainage and trimming on said easement.