

# GREEN MEADOWS SECOND SUBDIVISION

KNOW ALL MEN BY THESE PRESENTS:

That Lad Corp, fee owner and proprietor of the following described property situated in the County of Olmsted, State of Minnesota to wit:

That part of the north half of the Southwest Quarter in Section 10, Township 106, Range 14, Olmsted County, Minnesota lying easterly of "Line 1", lying south of a line 75 feet southeasterly of "Line 2", lying westerly of "Line 3" and lying northerly of the north shore line of the Zumbro River. Said "Line 1", "Line 2" and "Line 3" are described as follows:

"Line 1" is a line described as: beginning at a iron monument in the south line of said north half and the easterly right of way line of County State Aid Road No. 8, said iron monument being 2382.97 feet west from the southeast corner of said north half, said south line is assumed at bearing North 89 degrees 34 minutes 30 seconds West; thence North 16 degrees 48 minutes East along said easterly right of way line a distance of 533 feet to a iron stake; thence along said right of way line North 49 degrees 23 minutes a distance of 537.8 feet to the terminus of said "Line 1".

"Line 2" is a line described as: Commencing at the West Quarter corner of said Section 10; thence on an assumed bearing of South along the west line of said Section 10 a distance of 543.23 feet; thence North 80 degrees 56 minutes East a distance of 822.88 feet; thence along a 03 degree curve to the left (delta angle of 40 degrees 26 minutes) a distance of 1347.77 feet to the easterly terminus of said "Line 2".

"Line 3" is a line described as: Beginning at a point in the south line of said north half distant 1081.30 feet west from the southeast corner of said north half (said south line assumed bearing North 89 degrees 34 minutes 30 seconds West); thence North 13 degrees 12 minutes East a distance of 693.85 feet; thence North 0 degrees 17 minutes 36 seconds West a distance of 188.78 feet; thence along a non-tangent curve, concave northeasterly having a radius of 87 feet, the chord of said curve bears North 58 degrees 11 minutes 24 seconds West, through a central angle of 64 degrees 12 minutes 23 seconds for a distance of 97.49 feet; thence North 26 degrees 05 minutes 13 seconds West a distance of 96.37 feet; thence along a tangent curve, concave westerly through a central angle of 44 degrees 55 minutes 45 seconds for a distance of 88.61 feet; thence non-tangent to last said curve North 26 degrees 05 minutes 13 seconds West a distance of 23.90 feet to the southeasterly right of way line of County State Aid Highway No. 8 and said "Line 3" there terminating.

has caused the same to be surveyed and platted as GREEN MEADOWS SECOND SUBDIVISION and does hereby donate and dedicate to the public for public use forever the Drive as shown on this plat, together with a drainage and utility easement, only over Lot 1, Block 6.

In witness whereof said Lad Corp has caused these presents to be signed by its proper officers and its corporate seal to be hereunto affixed this 22<sup>nd</sup> day of NOVEMBER A.D. 1972.

In Presence of: Lad Corp  
Robert J. Jodan and Robert J. Jodan  
George A. Baihly  
George A. Baihly, President  
Marion K. Baihly  
Marion K. Baihly, Secretary-Treasurer

State of Minnesota) SS On this 22<sup>nd</sup> day of Nov. A.D. 1972 before me a Notary Public, County of Olmsted )  
personally appeared George A. Baihly and Marion K. Baihly, to me personally known, who by me each duly sworn did say that they are respectively, President and Secretary-Treasurer of Lad Corp, a Minnesota corporation, the Corporation named in the foregoing instrument, that the corporate seal affixed to said instrument is the corporate seal of said corporation and that said instrument was signed and sealed in behalf of said corporation by authority of its Board of Directors and said George A. Baihly and Marion K. Baihly acknowledged said instrument to be the free act and deed of said corporation.

Robert J. Jodan  
Notary Public, Olmsted County, Minnesota  
My commission expires Feb 17, 1976

I hereby certify that I have surveyed and platted the property described on this plat as GREEN MEADOWS SECOND SUBDIVISION; that this plat is a correct representation of said survey; that all distances are correctly shown on the plat in feet and decimals of a foot; that all monuments have been correctly placed in the ground as shown; that the outside boundary lines are correctly designated on the plat.

Richard H. Chervier  
Surveyor - Minnesota Registration No. 9064

State of Minnesota) SS The surveyor's certificate was subscribed and sworn to before me a County of Olmsted ) Notary Public, this 21<sup>st</sup> day of NOVEMBER A.D. 1972.

Robert J. Jodan  
Notary Public, Olmsted County, Minnesota  
My commission expires FEBRUARY 17, 1976

No delinquent taxes due and transfer entered this 26<sup>th</sup> day of December A.D. 1972.

343734  
Paul Brunning  
Olmsted County Auditor Ruth Evans, Deputy

State of Minnesota) SS I hereby certify that this plat was filed in this office for record on this 26 day of December A.D. 1972 at 4 o'clock P.M. County of Olmsted ) City of Rochester )

Harry J. Evans  
Registered of Deeds  
Olmsted County, Minnesota  
Sau Finstuen, deputy

State of Minnesota) SS I, Elfreda Reiter, City Clerk in and for said City of Rochester, do hereby certify that on the 18<sup>th</sup> day of December, A.D., 1972, the accompanying and annexed plat was duly approved by the Common Council of the City of Rochester. In testimony thereof I have hereunto signed my name and affixed the seal of said City of Rochester this 18<sup>th</sup> day of December A.D., 1972. County of Olmsted ) City of Rochester )

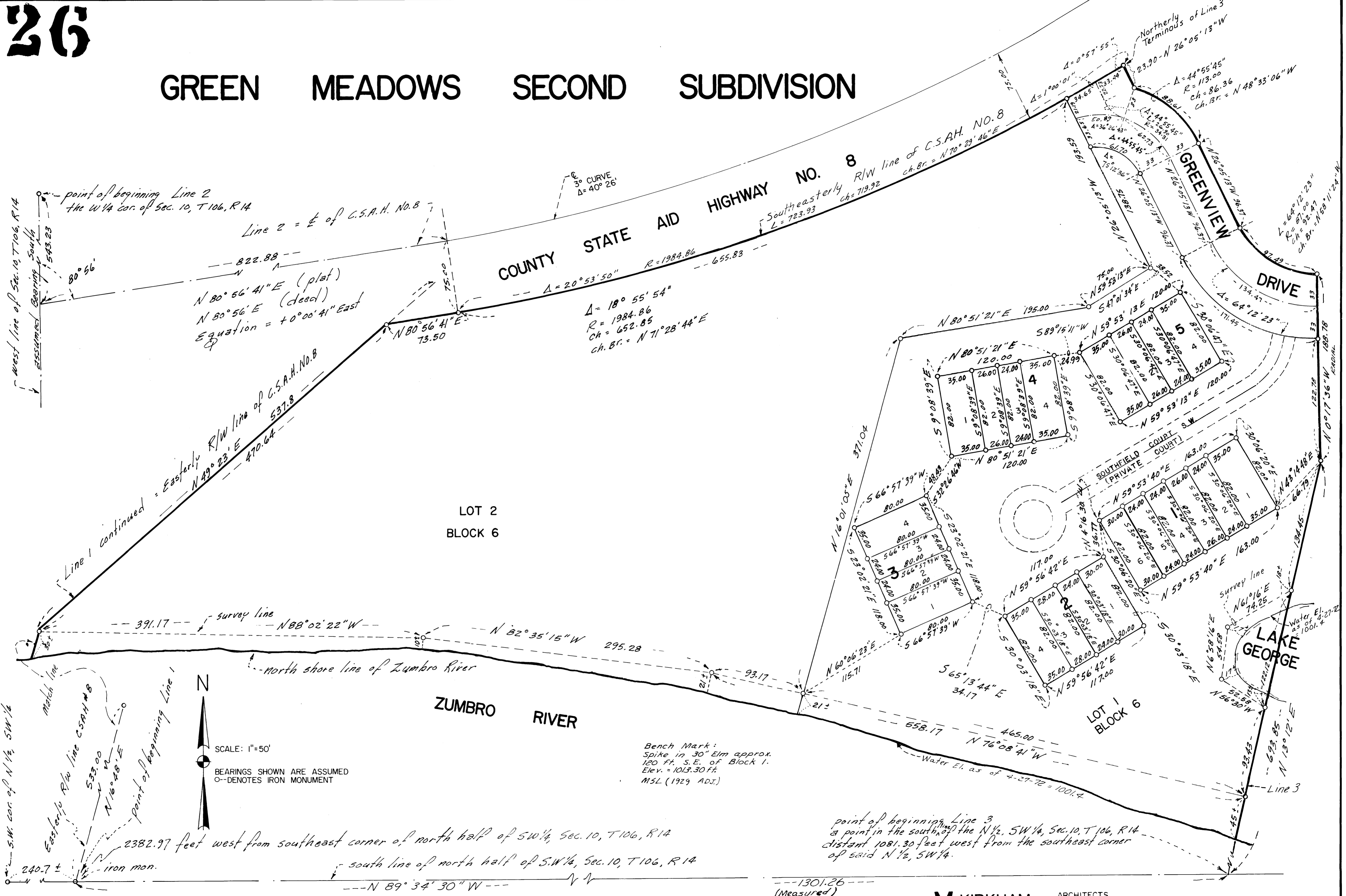
Carole A. Grunin  
deputy City Clerk of the City of Rochester, Minnesota

UTILITY EASEMENT DEFINED:  
EASEMENT FOR CONSTRUCTION AND MAINTENANCE OF ALL NECESSARY OVERHEAD, UNDERGROUND OR SURFACE, PUBLIC AND PRIVATE UTILITIES, INCLUDING RIGHTS TO CONDUCT DRAINAGE AND TRIMMING ON SAID EASEMENT.



ARCHITECTS & ENGINEERS

# GREEN MEADOWS SECOND SUBDIVISION



SCALE: 1"=50'  
 BEARINGS SHOWN ARE ASSUMED  
 O-DENOTES IRON MONUMENT

Bench Mark:  
 Spike in 30" Elm approx.  
 120 ft. S.E. of Block 1.  
 Elev. = 1013.30 ft.  
 MSL (1929 ADJ.)

point of beginning Line 3  
 a point in the south of the N 1/2, S.W. 1/4, Sec. 10, T106, R14  
 distant 1081.30 feet west from the southeast corner  
 of said N 1/2, S.W. 1/4.