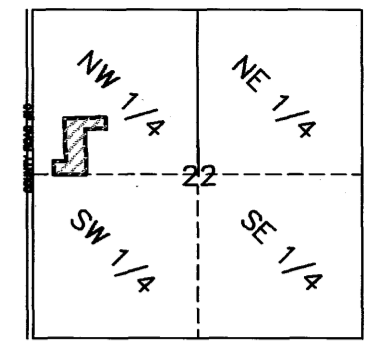


"OFFICIAL PLAT"

HENRY ESTATE'S FIRST ADDITION

SITE MAP  
T. 106, R. 11



Surveyor's Certificate

I hereby certify that I have surveyed and platted the property described on this plat as HENRY ESTATES FIRST ADDITION; that this plat is a correct representation of the survey; that all distances are correctly shown on the plat in feet and hundredths of a foot; that all monuments have been correctly placed in the ground as shown; that the outside boundary lines are correctly designated on the plat; and that there are no wetlands as defined in MS 505.02, Subd 1, or public highways to be designated other than as shown.

S.M. 14  
Geoffrey G Griffin, L.S.  
Minnesota License Number 21940

State of Minnesota  
County of Fillmore  
The surveyor's certificate was subscribed and sworn to before me, a Notary Public, this 12<sup>th</sup> day of December 2000.

Therese A. Opat  
Notary Public, Fillmore County, Minnesota



My commission expires: Jan. 31, 2005

County Surveyor

I certify that this plat has been checked mathematically and that the plat conforms to the applicable laws, this 12 day of Dec., 2000.

Edward P. Luise  
Olmsted County Surveyor

City Approval

State of Minnesota  
County of Olmsted  
City of Dover

We, Roger Ihrke, Mayor, and Karen Henry, City Clerk in and for the City of Dover, do hereby certify that on the 27 day of December, 2000, the accompanying plat was duly approved by the Common Council of the City of Dover. In testimony thereof I have hereunto signed by name and affixed the seal of said City of Dover this 27 day of December, 2000.

Roger P. Ihrke  
Mayor, Roger Ihrke

Karen Henry  
City Clerk, Karen Henry

PROPERTY RECORDS AND LICENSING

Taxes payable in the year 2000 on the land herein described have been paid, there are no delinquent taxes and transfer has been entered this 29<sup>th</sup> day of December, 2000.

DOCUMENT NUMBER A-860810

I hereby certify that this instrument was filed in the Office of Property Records and Licensing for the record on this 29<sup>th</sup> day of December 2000, at 9:12 o'clock A.M., and was duly recorded in the Olmsted County records.

Daniel G. Hall  
Director of Property Records & Licensing

Wendy von Wald  
Deputy

Instrument of Dedication

KNOW ALL MEN BY THESE PRESENTS: That Geoffrey G Griffin and Monica Gayle Griffin, husband and wife, and owners and proprietors of the following described property in the City of Dover, State of Minnesota, to wit:

LAND DESCRIPTION

That part of the South Half of the Northwest Quarter of Section 22, Township 106 North, Range 11 West, Olmsted County, Minnesota, and that part of Block 3 & 4 of Gerrish Addition to Dover Center, on file and of record in the Office of County Recorder, Olmsted County, Minnesota, described as follows:

Commencing at the southwest corner of said South Half of the Northwest Quarter; thence North 88° 43' 04" East, assumed bearing, along the south line of said South Half of the Northwest Quarter 801.17 feet to the point of beginning; thence North 1° 29' 13" West 186.73 feet to the southwest corner of Speer's Second, according to the recorded plat thereof on file and of record in the office of County Recorder, Olmsted County, Minnesota; thence North 88° 20' 52" East, along the south line of said Speer's Second 140.00 feet to the southeast corner of said Speer's Second; thence North 1° 29' 13" West along the east line of said Speer's Second and the east line of Jay B Second Addition according to the recorded plat thereof on file and of record in the office of County Recorder, Olmsted County, Minnesota 737.26 feet to the northeast corner of said Jay B Second Addition; thence North 88° 40' 12" East along the south line of South Street as platted in Dover Center, according to the recorded plat thereof on file and of record in the office of County Recorder, Olmsted County, Minnesota 586.00 feet; thence South 1° 29' 13" East 132.50 feet; thence South 88° 40' 12" West 360.00 feet; thence South 1° 29' 13" East 792.59 feet to the south line of said South Half of the Northwest Quarter; thence South 88° 43' 04" West 366.00 feet to the point of beginning; contains 6.50 acres.

Have caused the same to be surveyed and platted as HENRY ESTATES FIRST ADDITION and do hereby donate and dedicate to the public for the public use forever the thoroughfares, and also dedicate the easements as shown on this plat.

In witness whereof said Geoffrey G Griffin and Monica Gayle Griffin, husband and wife, caused these presents to be signed this 27<sup>th</sup> day of December 2000.

S.M. 14  
Geoffrey G Griffin

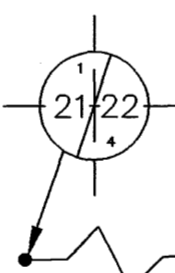
Monica Gayle Griffin  
Monica Gayle Griffin

State of Minnesota  
County of Fillmore

The foregoing instrument was acknowledged before me this 27<sup>th</sup> day of December 2000, by Geoffrey G Griffin and Monica Gayle Griffin, husband and wife.

Patricia C. Delaney  
Notary Public, Fillmore County, Minnesota

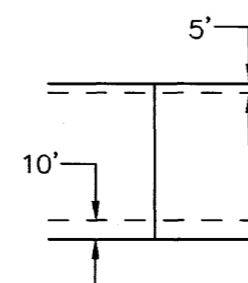
My commission expires: Jan 31, 2005



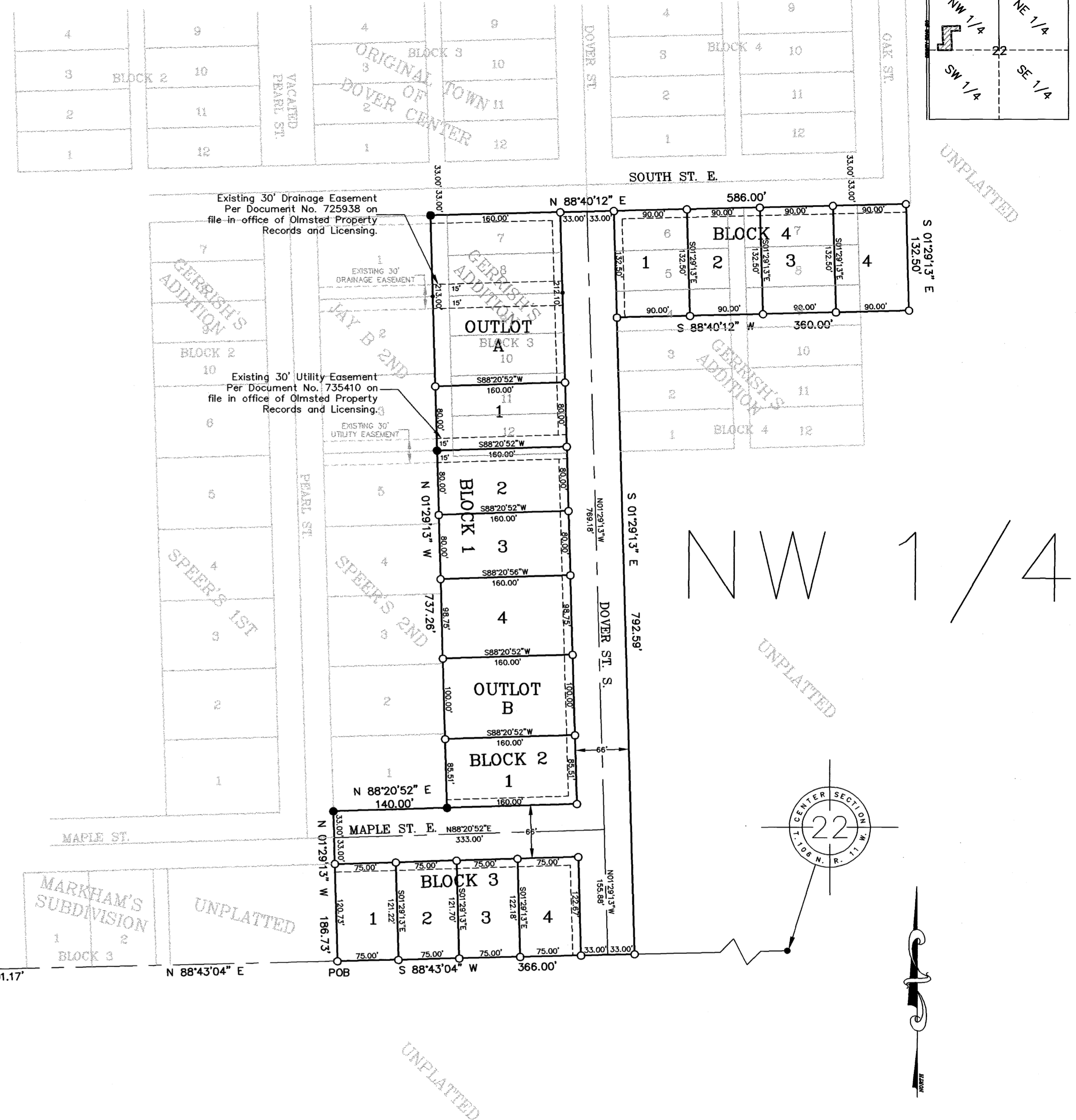
BEARINGS  
ALL BEARINGS ARE BASED ON THE SOUTH LINE OF THE NW 1/4 SECTION 22-106-11 WHICH IS ASSUMED TO BEAR NORTH 88° 43' 04" EAST

DRAINAGE EASEMENT DEFINED  
AN UNOBSTRUCTED EASEMENT FOR THE OPERATION AND MAINTENANCE OF ALL WATERWAYS, BOTH SURFACE AND UNDERGROUND RUNNING OVER, UNDER, AND ACROSS SAID EASEMENT.

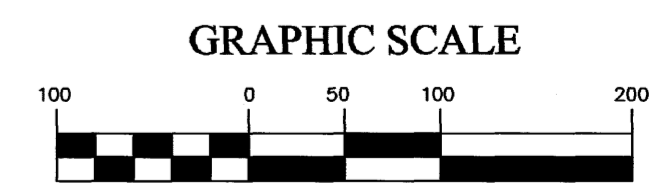
UTILITY EASEMENT DEFINED  
AN UNOBSTRUCTED EASEMENT FOR THE CONSTRUCTION AND MAINTENANCE OF ALL NECESSARY UNDERGROUND OR SURFACE PUBLIC UTILITIES INCLUDING THE RIGHTS TO CONDUCT DRAINAGE AND TRIMMING ON SAID EASEMENT.



UTILITY EASEMENTS ARE 10 FEET IN WIDTH ADJACENT TO STREET LINES AND 5 FEET ADJACENT TO LOT LINES UNLESS OTHERWISE SHOWN.



- FOUND MONUMENT
- IRON PIPE WITH PLASTIC CAP STAMPED R.L.S.#21940 SET



274A

GGG Engineering Surveying Planning  
Geoffrey G Griffin  
14070 Hwy. 52 S.E. Chatfield, Mn. 55923 Ph. 507-867-1666  
FILE: 99228P