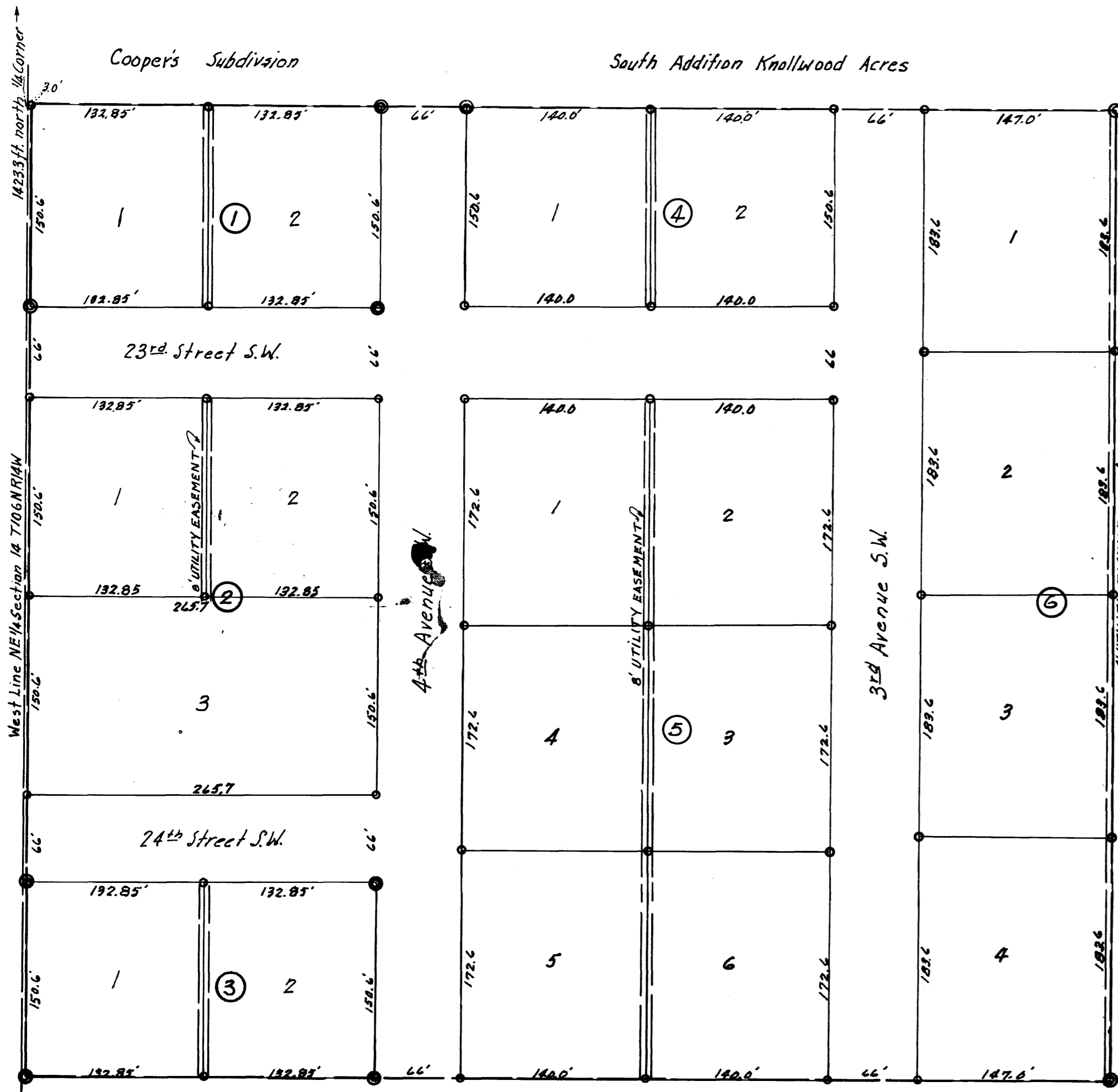


HILMER'S HIGHVIEW ACRES No. TWO



Easement defined: Utility Easement for construction and maintenance of Electric Power and Telephone Lines, and Trimming Rights for said maintenance. Boundary Lines.

Approved this 8th day of August 1955
 Olmsted County Planning Commission
 By Franklin Hill Vice Chairman

Approved this 4th day of August 1955 Board of Supervisors, Rochester Township

Ed J. Ralushko Chairman
Robert Bengelow Supervisor
Walter Hambrick Supervisor

Approved this 5th day of October 1955 for Sewage Disposal & Water Supply

Thomas H. Hall Engineer
 Reg. No. 2608

Surveyors Certificate

I Henry M. Kalb do hereby certify that at the request of F.F. Hilmer owner of the following described property situated in the NE 1/4 Section 14 T106N-R14W, Olmsted County, Minnesota, described as follows: Commencing at a point 1423.3 feet south and 30 feet east of the N 1/4 corner Section 14 T106N-R14W for a place of beginning, thence east 824.7 feet, thence south 734.4 feet, thence west 824.7 feet, thence north 734.4 feet to the point of beginning; that I have surveyed, platted into Lots, Blocks and Streets as shown on the accompanying plat on which this certificate is written and which shall be known and designated as "Hilmer's Highview Acres No. Two." And I further certify that the accompany plat is a true and accurate representation of the survey, that all distances are correctly shown in feet and decimals of a foot, that monuments for guidance of future surveys have been correctly placed in the ground at the places shown thus © and that there no wet lands to be designated thereon, and that the said property has not heretofore been platted.

Dated at Rochester, Minnesota, this 30th day of July, 1955

H.M. Kalb

Registered Land Surveyor No. 2151

Sworn and subscribed before a Notary Public, Olmsted County, Minnesota, this 30th day of July, 1955

Paul N. Krueger
 Notary Public, Olmsted County, Minnesota. My commission expires November, 18, 1956

Dedication

The undersigned F.F. Hilmer and Mabel M. Hilmer do hereby certify that they are the owners of the property described in the foregoing Surveyors Certificate which is written on the plat; that we have caused the same to be surveyed, staked and platted into lots, blocks and streets as shown on the accompanying plat; that the same to be known and designated as "Hilmer's Highview Acres No. Two," that we do for ourselves our heirs, administrators, executors and assigns hereby grant and dedicate the streets and Avenues as shown on the accompanying plat to the use of the Public as such forever. In testimony whereof we have here-on set our hands and seals this 1st day of August 1955 in the presence of:

Ed J. Ralushko Witness
Paul N. Krueger Witness

F.F. Hilmer
Mabel M. Hilmer

State of Minnesota.

County of Olmsted, S.S.

On this 1st day of August 1955 before me a Notary Public within and for said County personally appeared F.F. Hilmer and Mabel M. Hilmer to me know to be the persons described in and who executed the foregoing Instrument and acknowledged that they executed the same as their free act and deed.

Paul N. Krueger
 Notary Public, Olmsted County, Minnesota. My commission expires May 21 1961

State of Minnesota.

County of Olmsted, S.S.

I, Frances L. Underleak, County Auditor in and for said County do hereby certify that attached plat was duly approved by the Board of County Commissioners at a meeting held on this 10th day of August 1955. In testimony whereof I have signed my name and affixed the seal of said County this 7th day of October 1955.

Frances L. Underleak County Auditor

Taxes paid for the year 1954

Karl Postler County Treasurer

Taxes paid and Transfer entered this 2nd day of August 1955

Frances L. Underleak County Auditor

State of Minnesota.

County of Olmsted, S.S.

Filed for record this 11th day of October 1955, at 12 o'clock M. and recorded in Book of Plats page

Tom Moore Register of Deeds
 by D.F. Clark, deputy

