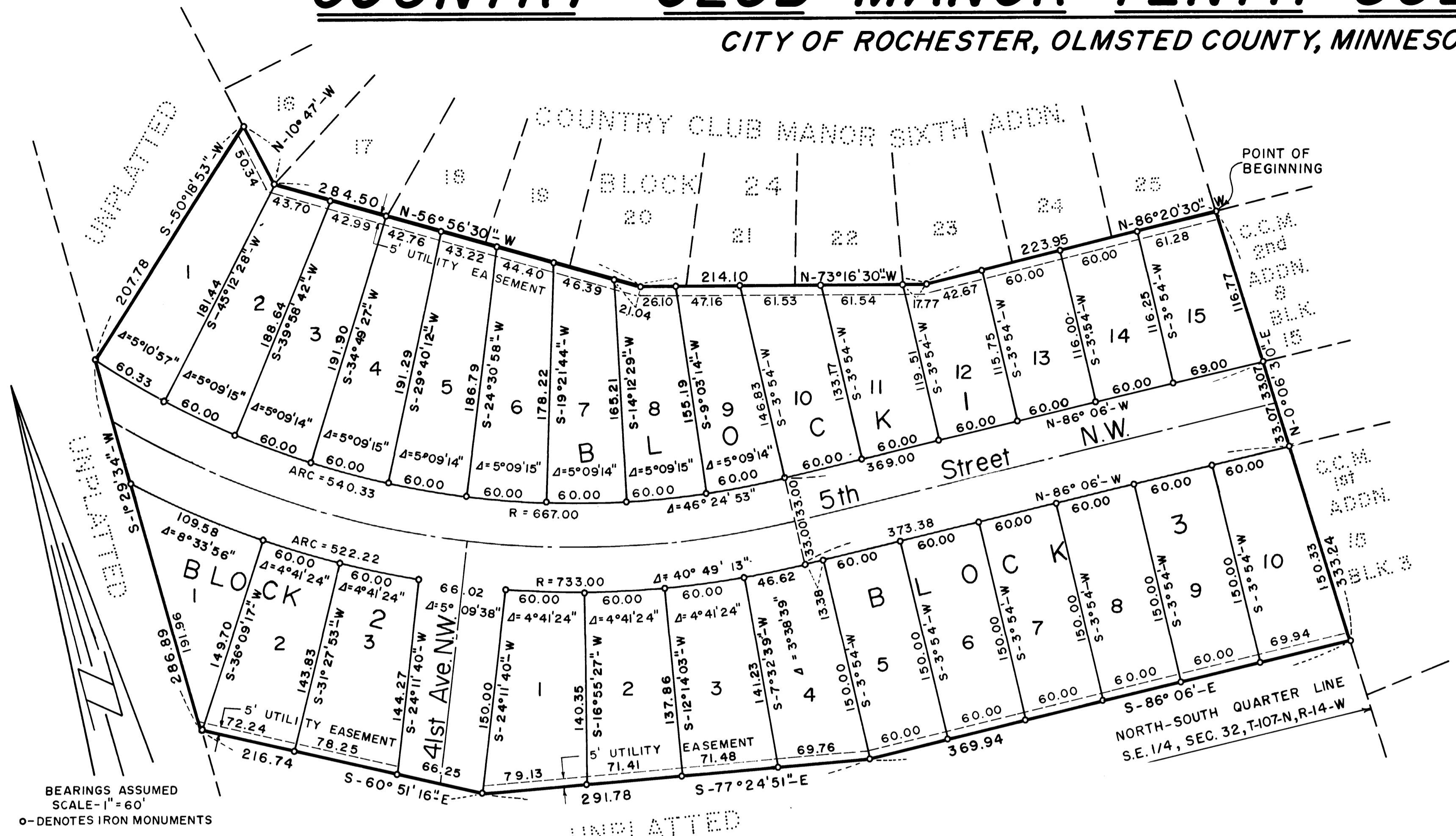


COUNTRY CLUB MANOR TENTH SUBDIVISION

CITY OF ROCHESTER, OLMS TED COUNTY, MINNESOTA



BEARINGS ASSUMED
SCALE-1"=60'
o-DENOTES IRON MONUMENTS

DEDICATION

WE, JOHNSON, DRAKE AND PIPER, INCORPORATED, OWNER, A MINNESOTA CORPORATION, CERTIFY THAT WE ARE THE SOLE INTERESTED PARTY IN THE TRACT OF LAND DESCRIBED IN THE FOREGOING SURVEYOR'S CERTIFICATE WHICH IS WRITTEN ON THE PLAT ON WHICH THIS INSTRUMENT IS WRITTEN; THAT WE HAVE CAUSED THE SAME TO BE PLATTED INTO LOTS, BLOCKS, STREET, AVENUE AND EASEMENTS UNDER THE NAME OF COUNTRY CLUB MANOR TENTH SUBDIVISION AS SHOWN BY THE SAID PLAT; AND THAT WE DO HEREBY DEDICATE TO THE PUBLIC FOR PUBLIC USE FOREVER THE STREET AND AVENUE SHOWN THEREON AND GRANT THE EASEMENTS SHOWN THEREON.

IN THE PRESENCE OF: JOHNSON, DRAKE AND PIPER, INC.
Violet A. Cuffel
Robert H. Patterson BY *D. P. Jesson*
 ITS PRESIDENT

Violet A. Cuffel
Robert H. Patterson BY *E. L. Forbrook*
 ITS ASSISTANT VICE PRESIDENT

SURVEYOR'S CERTIFICATE

I, LEONARD SANKSTONE, REGISTERED LAND SURVEYOR, DO HEREBY CERTIFY THAT AT THE REQUEST OF JOHNSON, DRAKE AND PIPER, INCORPORATED, OWNER, A MINNESOTA CORPORATION, I HAVE SURVEYED AND PLATTED INTO LOTS, BLOCKS, STREET, AVENUE AND EASEMENTS AS SHOWN ON THE ACCOMPANYING PLAT ON WHICH THIS CERTIFICATE IS WRITTEN, THE FOLLOWING DESCRIBED TRACT:

BEGINNING AT THE NORTHWEST CORNER OF LOT 8, BLOCK 15 OF COUNTRY CLUB MANOR SECOND ADDITION, SAID POINT BEING ON THE NORTH-SOUTH QUARTER LINE OF THE SOUTHEAST ONE QUARTER OF SECTION 32, TOWNSHIP 107, RANGE 14;
 THENCE NORTH-86 DEGREES 20 MINUTES 30 SECONDS-WEST 223.95 FEET;
 THENCE NORTH-73 DEGREES 16 MINUTES 30 SECONDS-WEST 214.10 FEET;
 THENCE NORTH-56 DEGREES 56 MINUTES 30 SECONDS-WEST 284.50 FEET;
 THENCE NORTH-10 DEGREES 47 MINUTES-WEST 50.34 FEET;
 THENCE SOUTH-50 DEGREES 18 MINUTES 53 SECONDS-WEST 207.78 FEET;
 THENCE SOUTH-1 DEGREE 29 MINUTES 34 SECONDS-WEST 286.89 FEET;
 THENCE SOUTH-60 DEGREES 51 MINUTES 16 SECONDS-EAST 216.74 FEET;
 THENCE SOUTH-77 DEGREES 24 MINUTES 51 SECONDS-EAST 291.78 FEET;
 THENCE SOUTH-86 DEGREES 06 MINUTES-EAST 369.94 FEET TO THE NORTH-SOUTH QUARTER LINE OF SAID SOUTHEAST ONE QUARTER OF SECTION 32;
 THENCE NORTH-0 DEGREES 06 MINUTES 30 SECONDS-EAST 333.24 FEET TO THE POINT OF BEGINNING, CITY OF ROCHESTER, OLMS TED COUNTY, MINNESOTA.

AND I FURTHER CERTIFY THAT SAID PLAT IS A TRUE AND CORRECT RECORD OF THE SURVEY AND THAT ALL DISTANCES ARE CORRECTLY SHOWN IN FEET AND DECIMALS OF FEET; THAT MONUMENTS [IRON PINS] FOR THE GUIDANCE OF FUTURE SURVEYS HAVE BEEN PLACED ON THE GROUND AS SHOWN THUS: [o]; THAT THE OUTSIDE BOUNDARIES ARE CORRECTLY SHOWN ON THE PLAT; THAT THERE ARE NO WETLANDS TO BE DESIGNATED; AND THAT SAID PLAT HAS NOT BEEN PREVIOUSLY PLATTED.

STATE OF MINNESOTA]
 COUNTY OF OLMS TED] SS 19653
 I HEREBY CERTIFY THAT THIS PLAT WAS FILED IN THIS OFFICE FOR RECORD ON THIS 8th DAY OF May, 1972 A.D. AT 2:00 O'CLOCK P.M.

Harry H. Evans
 HARRY H. EVANS, REGISTER OF DEEDS REGISTRAR OF TITLES
Jessie C. Suljan
 JESSIE C. SULJAN, DEPUTY

NO DELINQUENT TAXES DUE AND TRANSFER ENTERED THIS 8th DAY OF May, 1972.

Ross Browning
 ROSS BROWNING, COUNTY AUDITOR *Ruth Evans*, Deputy

STATE OF MINNESOTA]
 COUNTY OF OLMS TED] SS
 CITY OF ROCHESTER]
 I, ELFREDA REITER, CITY CLERK IN AND FOR SAID CITY OF ROCHESTER DO HEREBY CERTIFY THAT ON THE 15th DAY OF May, 1972 A.D., THE ACCOMPANYING AND ANNEXED PLAT WAS DULY APPROVED BY THE COMMON COUNCIL OF THE CITY OF ROCHESTER, IN TESTIMONY WHEREOF I HAVE HEREONTO SIGNED MY NAME AND AFFIXED THE SEAL OF SAID CITY OF ROCHESTER THIS 2nd DAY OF May, 1972 A.D.

Elfreda Reiter
 ELFREDA REITER, CITY CLERK
 CITY OF ROCHESTER, MINNESOTA

STATE OF MINNESOTA]
 COUNTY OF OLMS TED] SS
 ON THIS 10th DAY OF MARCH, 1972 A.D. BEFORE ME, A NOTARY PUBLIC IN AND FOR SAID COUNTY, PERSONALLY APPEARED D. P. JESSON AND E. L. FORBROOK, TO ME PERSONALLY KNOWN, WHO BEING EACH BY ME DULY SWORN, DID SAY THAT THEY ARE RESPECTIVELY THE PRESIDENT AND THE ASSISTANT VICE PRESIDENT OF JOHNSON, DRAKE AND PIPER, INCORPORATED, A MINNESOTA CORPORATION; AND THAT THE SEAL AFFIXED TO SAID INSTRUMENT IS THE CORPORATE SEAL OF SAID CORPORATION AND THAT SAID INSTRUMENT WAS SIGNED AND SEALED ON BEHALF OF SAID CORPORATION BY AUTHORITY OF ITS BOARD OF DIRECTORS; AND SAID D. P. JESSON AND E. L. FORBROOK ACKNOWLEDGE SAID INSTRUMENT TO BE THE FREE ACT AND DEED OF SAID CORPORATION.

Robert Patterson
 NOTARY PUBLIC, OLMS TED COUNTY, MINNESOTA
 MY COMMISSION EXPIRES May 3, 1976.

DATED THIS 10th DAY OF MARCH, 1972 A.D.
Leonard Sankstone
 LEONARD SANKSTONE
 REGISTERED LAND SURVEYOR NO. 5325

STATE OF MINNESOTA]
 COUNTY OF OLMS TED] SS
 THIS SURVEYOR'S CERTIFICATE WAS SUBSCRIBED AND SWORN BEFORE ME, A NOTARY PUBLIC, THIS 10th DAY OF MARCH, 1972.

CEDRIC SCHUTZ
 Notary Public Olmsted County Minn.
 My Commission Expires Sept. 24 1977

Cedric Schutz
 NOTARY PUBLIC, OLMS TED COUNTY, MINNESOTA
 MY COMMISSION EXPIRES _____

UTILITY EASEMENT DEFINED:
 EASEMENT FOR CONSTRUCTION AND MAINTENANCE OF ALL NECESSARY OVERHEAD, UNDERGROUND, OR SURFACE PUBLIC AND PRIVATE UTILITIES, INCLUDING RIGHTS TO CONDUCT DRAINAGE AND TRIMMING ON SAID EASEMENT.