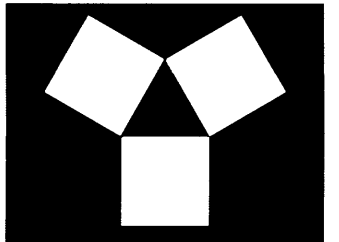


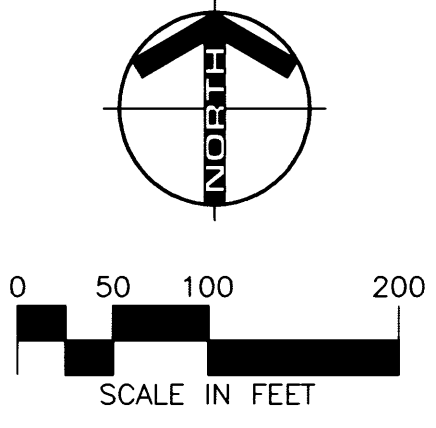
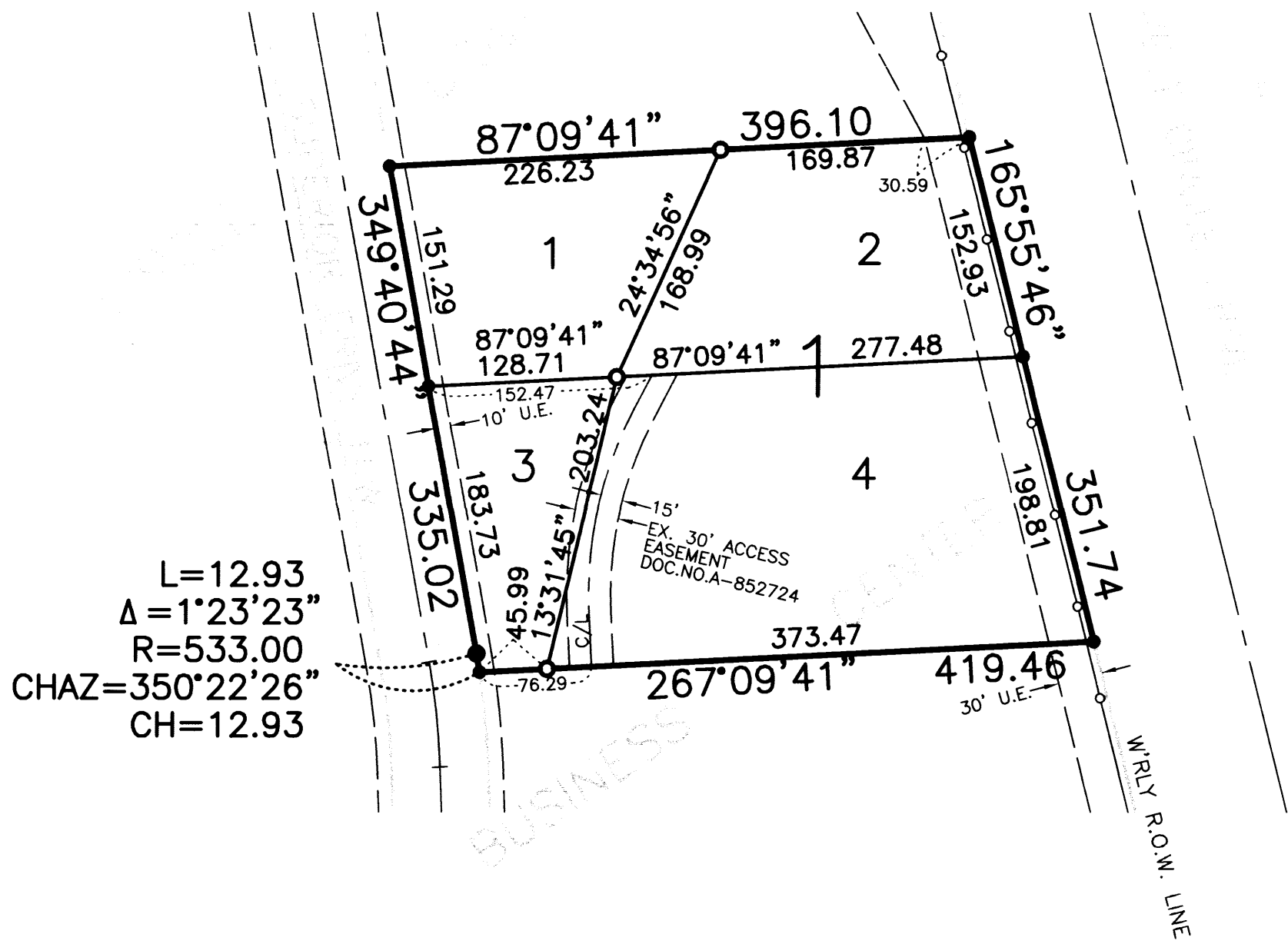
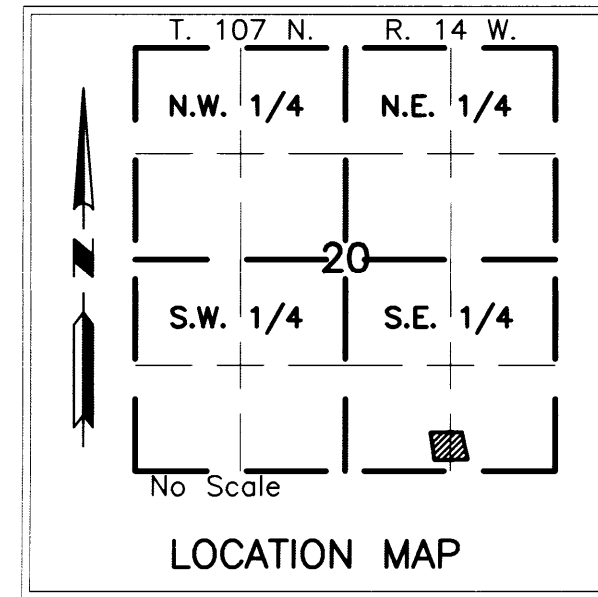
CIRCLE DRIVE BUSINESS CENTER THIRD



YAGGY COLBY ASSOCIATES

ENGINEERS • ARCHITECTS
SURVEYORS • PLANNERS
LANDSCAPE ARCHITECTS

717 THIRD AVENUE SOUTHEAST
ROCHESTER, MINNESOTA 55904
507-288-6464
FAX 507-288-5038
EMAIL INFO@YAGGY.COM



BEARINGS
Plat bearings are Minnesota State Plane Grid Azimuths measured to the right from grid north.

UTILITY EASEMENT DEFINED
An unobstructed easement for the construction and maintenance of all necessary overhead, underground or surface public utilities, including rights to conduct drainage and trimming on said easement.

CONTROLLED ACCESS DEFINED
Ingress and egress to, from or across the abutting roadway is restricted by the road authority pursuant to Minnesota State Statute 160.08.

- MONUMENTS**
- Set 1/2" Rebars
 - Set 3/4" Iron Pipes
 - Found Monuments (Pipe, Rod, Etc.)
- All monuments set have a plastic cap stamped L.S. 22422.

U.E. = UTILITY EASEMENT
—○— CONTROLLED ACCESS

In witness whereof said Wells Fargo Bank Minnesota, N.A., formerly known as Norwest Bank Minnesota South, N.A., has caused these presents to be signed by its proper officer this 21 day of November, 2000.

David G. Wittenberg
David G. Wittenberg
Vice President

COUNTY SURVEYOR
I certify that this plat has been checked mathematically and that the plat conforms to applicable platting laws.
This 23 day of November, 2000.
Edward P. Kuisle
Edward P. Kuisle
Olmsted County Surveyor

INSTRUMENT OF DEDICATION
KNOW ALL MEN BY THESE PRESENTS: That Badger Development, LLC, a Minnesota Limited Liability Company, mortgagor, Wells Fargo Bank Minnesota, N.A., formerly known as Norwest Bank Minnesota South, N.A., mortgagee, and Richard E. Badger Revocable Trust, mortgagee, all being owners and proprietors of the following described property, situated in the County of Olmsted, State of Minnesota, to wit:

Lots 2 and 3, Block 1, CIRCLE DRIVE BUSINESS CENTER, according to the plat thereof on file at the County Recorder's office, Olmsted County, Minnesota.

Said tract contains 3.23 acres more or less.

Have caused the same to be surveyed and platted as CIRCLE DRIVE BUSINESS CENTER THIRD and do hereby dedicate to the public for public use forever the easements, as shown on this plat for utility purposes only.

STATE OF MINNESOTA
COUNTY OF OLMSTED
The foregoing instrument was acknowledged before me this 21st day of November, 2000 by David G. Wittenberg, Vice President of Wells Fargo Bank Minnesota, N.A., formerly known as Norwest Bank Minnesota South, N.A., a national association, on behalf of the association.

Michele R. Sursely
MICHELE R. SURSELY
NOTARY PUBLIC - MINNESOTA
My Commission Expires Jan 31, 2005

Michele R. Sursely
Notary Public, Olmsted County, MN
My Commission Expires 1-31-05

SURVEYOR'S CERTIFICATE
I do hereby certify that I have surveyed and platted the property described on this plat as CIRCLE DRIVE BUSINESS CENTER THIRD; that this plat is a correct representation of said survey; that all distances are correctly shown on said plat in feet and hundredths of a foot; that all monuments have been correctly placed in the ground as shown or will be correctly placed in the ground by October 31, 2001; that the outside boundary lines are correctly designated; and that there are no wetlands as defined in MS 505.02, Subd. 1, or public highways to be designated on said plat other than as shown.

Douglas G. Rude
Douglas G. Rude
Minnesota L.S. No. 22422

In witness whereof said Richard E. Badger Revocable Trust, has caused these presents to be signed by its proper officer this 21 day of November, 2000.

Richard E. Badger
Richard E. Badger, Trustee

STATE OF MINNESOTA
COUNTY OF OLMSTED
The foregoing Surveyor's Certificate was acknowledged before me this 21st day of November, 2000, by Douglas G. Rude, L.S. No. 22422.

Sue E. Madden
SUE E. MADDEN
NOTARY PUBLIC - MINNESOTA
My Commission Expires 1/31/2005

Sue E. Madden
Notary Public, Olmsted County, MN
My Commission Expires 1/31/2005

In witness whereof said Badger Development, LLC, a Minnesota Limited Liability Company, has caused these presents to be signed by its proper officer this 21 day of November, 2000.

J.M. Hamilton
J.M. Hamilton
General Partner

STATE OF MINNESOTA
COUNTY OF OLMSTED
The foregoing instrument was acknowledged before me this 21 day of November, 2000 by Richard E. Badger, Trustee of the Richard E. Badger Revocable Trust.

Norma J. King
NORMA J. KING
NOTARY PUBLIC - MINNESOTA
My Commission Expires 1-31-2005

Norma J. King
Notary Public, Olmsted County, MN
My Commission Expires 1-31-2005

COUNTY PROPERTY RECORDS AND LICENSING
Taxes payable in the year 2000 on the land herein described have been paid, there are no delinquent taxes and transfer has been entered this 22ND day of November, 2000.

Document Number - **A-858131**

STATE OF MINNESOTA
COUNTY OF OLMSTED
The foregoing instrument was acknowledged before me this 21 day of November, 2000 by J.M. Hamilton, General Partner, Badger Development, LLC, a Minnesota Limited Liability Company, on behalf of the Company.

Norma J. King
NORMA J. KING
NOTARY PUBLIC - MINNESOTA
My Commission Expires 1-31-2005

Norma J. King
Notary Public, Olmsted County, MN
My Commission Expires 1-31-2005

CITY APPROVAL
STATE OF MINNESOTA
COUNTY OF OLMSTED
CITY OF ROCHESTER
I, Judy Scherr, City Clerk, in and for the City of Rochester, do hereby certify that on the 07TH day of NOVEMBER, 2000, the accompanying plat was duly approved by the Common Council of the City of Rochester. In testimony whereof, I have hereunto signed my name and affixed the Seal of said City of Rochester this 22ND day of NOVEMBER, 2000.

Judy Scherr
Judy Scherr
City Clerk
City of Rochester

I hereby certify that this instrument was filed in the Office of Property Records and Licensing for record on this 22ND day of November, 2000, at 4^{1/2} o'clock P.m. and was duly recorded in Olmsted County Records.

Raniel O. Hall
Raniel O. Hall
Olmsted County Director of
Property Records and Licensing
By *Wendy von Wald* Deputy

PROJECT NUMBER: 6753
COMPUTER FILE: 6753PFD5.DWG
DATE: 11/20/2000
DRAFTER/PERSON: P.G.C.