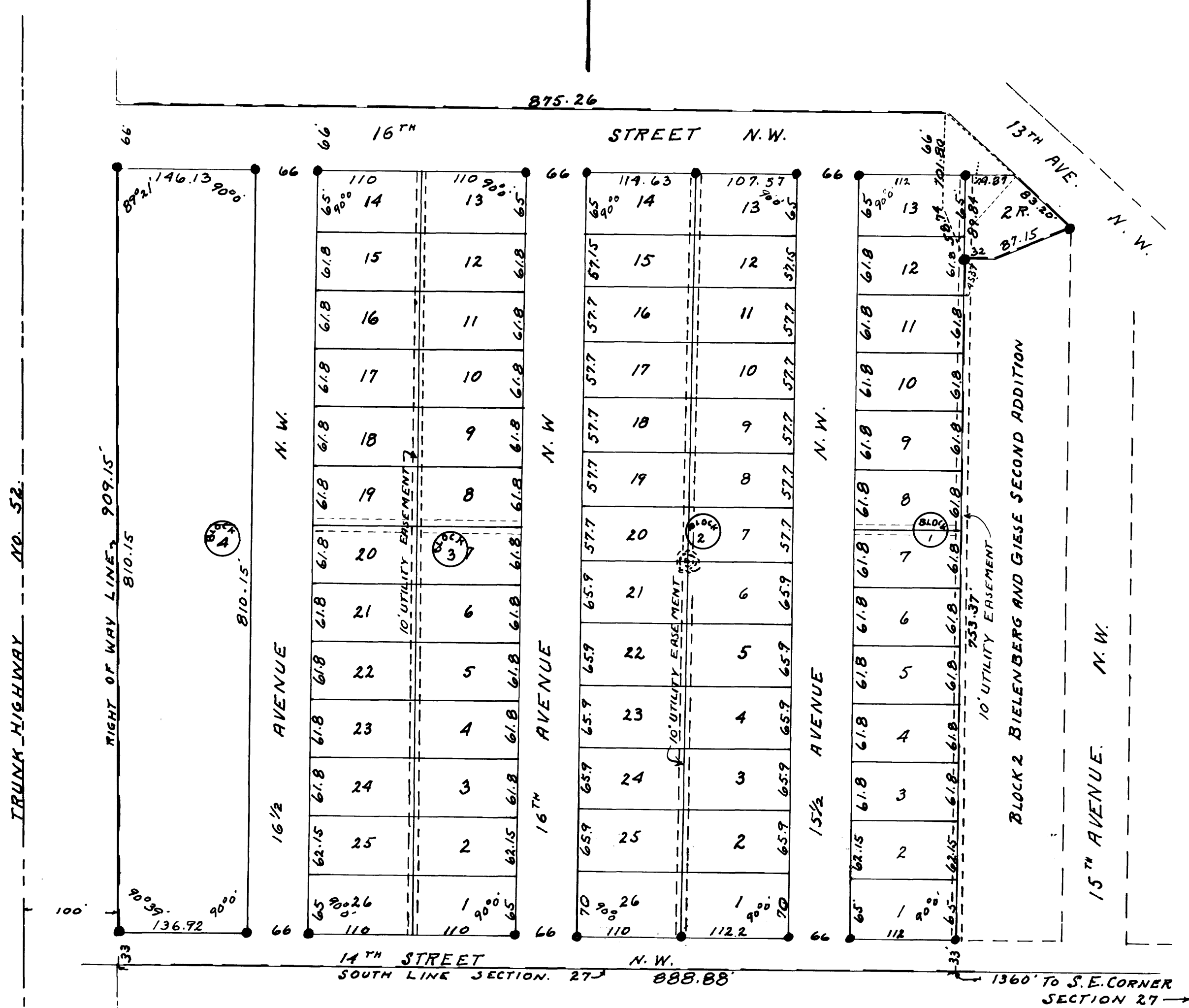


BIELENBERG AND GIESE THIRD ADDITION ROCHESTER MINNESOTA.

BOUNDARIES SHOWN THUS ————
MONUMENTS SHOWN THUS ● = 1/4" PIPE.
SCALE 1" = 100'
1954.



UTILITY EASEMENT DEFINED.
FOR THE CONSTRUCTION REPAIR AND MAINTENANCE
OF ELECTRICAL POWER AND TELEPHONE LINES
WITH TRIMMING RIGHTS GRANTED.

SURVEYORS CERTIFICATE.

I, JOHN J. KERR DO HEREBY CERTIFY THAT AT THE REQUEST OF WILLIAM BIELENBERG AND RUTH E. BIELENBERG (HIS WIFE), JOHN BIELENBERG (SINGLE), HENRY J. GIESE AND MYRTLE A. GIESE (HIS WIFE), EDITH O. KLEIN (SINGLE), A. H. PRIGGE AND ALMA L. PRIGGE (HIS WIFE), LILLIE E. PRIGGE AND Wm. J. PRIGGE (HER HUSBAND), A. J. HALL AND LILLIAN E. HALL (HIS WIFE) OWNERS OF THE FOLLOWING DESCRIBED LANDS; COMMENCING AT A POINT IN THE SOUTH LINE OF SECTION 27 TOWNSHIP 107 NORTH OF RANGE 14 WEST, WHICH IS 1360 FEET WEST OF THE SOUTHWEST CORNER OF SAID SECTION FOR A PLACE OF BEGINNING, AND RUNNING THENCE NORTH AT A RIGHT ANGLE TO SAID SOUTH LINE 753.37 FEET, THENCE NORTH 24°7' WEST 58.74 FEET, THENCE DUE NORTH 101.80 FEET, THENCE DUE WEST PARALLEL WITH THE SOUTH LINE OF SAID SECTION 875.26 FEET TO THE EAST RIGHT OF WAY LINE OF TRUNK HIGHWAY NO. 52, THENCE SOUTHERLY ALONG THE EAST RIGHT OF WAY LINE OF SAID TRUNK HIGHWAY TO THE SOUTH LINE OF SAID SECTION, THENCE DUE EAST ALONG THE SOUTH LINE OF SAID SECTION 888.88 FEET MORE OR LESS TO THE PLACE OF BEGINNING; AND ALSO LOTS 1 AND 2 BLOCK 2 BIELENBERG AND GIESE SECOND ADDITION, I HAVE SURVEYED AND PLATTED SAID LANDS INTO LOTS, BLOCKS, STREETS AND AVENUES SUCH SUBDIVISION TO BE KNOWN AND DESIGNATED AS "BIELENBERG AND GIESE THIRD ADDITION, ROCHESTER, MINNESOTA;" THAT ALL DISTANCES ARE SHOWN IN FEET AND DECIMALS OF A FOOT, THAT MONUMENTS FOR THE GUIDANCE OF FUTURE SURVEYS HAVE BEEN PLACED IN THE GROUND AT THE LOCATION MARKED THUS ● THAT THE OUTSIDE BOUNDARIES ARE SHOWN, THAT THERE ARE NO WET LANDS THEREON, THAT SAID LANDS HAVE NOT HERE-TO-FORE BEEN SUBDIVIDED OR PLATTED EXCEPTING LOTS 1 AND 2 BLOCK 2 BIELENBERG AND GIESE SECOND ADDITION, ROCHESTER, MINNESOTA.
DATED THIS 4TH DAY OF SEPTEMBER A.D. 1954.

John J. Kerr, COUNTY SURVEYOR.
REGISTERED LAND SURVEYOR NO. 238.

DEDICATION.

WE, THE UNDERSIGNED WILLIAM BIELENBERG AND RUTH E. BIELENBERG (HIS WIFE), JOHN BIELENBERG (SINGLE), HENRY J. GIESE AND MYRTLE A. GIESE (HIS WIFE), EDITH O. KLEIN (SINGLE), A. H. PRIGGE AND ALMA L. PRIGGE (HIS WIFE), LILLIE E. PRIGGE AND Wm. J. PRIGGE (HER HUSBAND), A. J. HALL AND LILLIAN E. HALL (HIS WIFE) DO HEREBY CERTIFY THAT WE ARE THE OWNERS OF THE LANDS DESCRIBED IN THE FOREGOING SURVEYORS CERTIFICATE, THAT WE HAVE CAUSED THE SAME TO BE SURVEYED AND PLATTED INTO LOTS, BLOCKS, STREETS AND AVENUES AND UTILITY EASEMENTS UNDER THE NAME OF "BIELENBERG AND GIESE THIRD ADDITION, ROCHESTER, MINNESOTA" AS SHOWN BY THE ACCOMPANYING PLAT, AND WE DO FOR OURSELVES, OUR HEIRS, EXECUTORS, ADMINISTRATORS AND ASSIGNS HEREBY GRANT AND DEDICATE TO THE PUBLIC THE STREETS AND AVENUES AS SHOWN THEREON TO THE USE OF THE PUBLIC AS SUCH FOREVER, AND WE ALSO GRANT UTILITY EASEMENTS AS SHOWN ON SAID PLAT AND DEFINED THEREON.
SIGNED IN THE PRESENCE OF.

WITNESS.	<i>William Bielenberg</i>	RUTH E. BIELENBERG
WITNESS.	<i>John Bielenberg</i>	ALMA L. PRIGGE
WITNESS.	<i>Henry J. Giese</i>	MYRTLE A. GIESE
WITNESS.	<i>Edith O. Klein</i>	A. H. PRIGGE
WITNESS.	<i>Lillie E. Prigge</i>	Wm. J. PRIGGE
WITNESS.	<i>A. J. Hall</i>	LILLIAN E. HALL

STATE OF MINNESOTA,
COUNTY OF OLSTED, S. S.

ON THIS 11TH DAY OF FEBRUARY A.D. 1955 BEFORE ME A NOTARY PUBLIC WITHIN AND FOR SAID STATE AND COUNTY, PERSONALLY APPEARED WILLIAM BIELENBERG AND RUTH E. BIELENBERG, JOHN BIELENBERG, HENRY J. GIESE AND MYRTLE A. GIESE, EDITH O. KLEIN, A. H. PRIGGE AND ALMA L. PRIGGE, LILLIE E. PRIGGE AND Wm. J. PRIGGE, A. J. HALL AND LILLIAN E. HALL TO ME KNOWN TO BE THE PERSONS WHO EXECUTED THE FOREGOING INSTRUMENT AND ACKNOWLEDGED THAT THEY EXECUTED THE SAME AS THEIR FREE ACT AND DEED.

NOTARY PUBLIC, OLSTED COUNTY, MINNESOTA.
MY COMMISSION EXPIRES A.D. 1955.

STATE OF MINNESOTA,
COUNTY OF OLSTED,
CITY OF ROCHESTER, S. S.

I, F. R. FINCH CITY CLERK IN AND FOR THE CITY OF ROCHESTER DO HEREBY CERTIFY THAT ON THIS 11TH DAY OF FEBRUARY A.D. 1955 THE ACCOMPANYING PLAT WAS DULY APPROVED BY THE COMMON COUNCIL OF THE CITY OF ROCHESTER. IN TESTIMONY WHEREOF I HAVE HERE-UN-TO SET MY HAND AND AFFIXED THE SEAL OF SAID CITY THIS 11TH DAY OF FEBRUARY A.D. 1955.

F. R. Finch CITY CLERK.

TAXES PAID FOR THE YEAR OF 1955.

Kenneth P. ... COUNTY TREASURER.

TAXES PAID AND TRANSFER ENTERED THIS 11TH DAY OF FEBRUARY A.D. 1955.

... COUNTY AUDITOR.

STATE OF MINNESOTA,
COUNTY OF OLSTED, S. S.

FILED FOR RECORD THIS 11TH DAY OF FEBRUARY A.D. 1955.
AT 10 O'CLOCK A.M. AND RECORDED IN BOOK OF PLATS PAGE 111.

John W. ... REGISTER OF DEEDS.