

"OFFICIAL PLAT"

REPLAT OF BLOCK 2
 PINWOOD MEADOWS FIRST ADDITION
 COMMON INTEREST COMMUNITY NUMBER 162

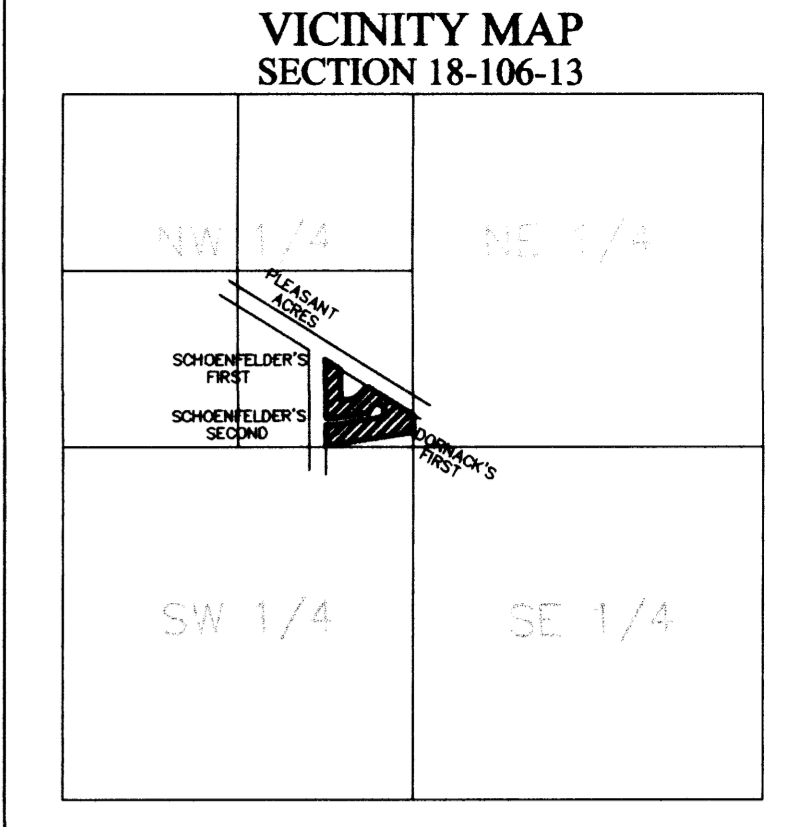
UTILITY EASEMENT DEFINED
 AN UNOBSTRUCTED EASEMENT FOR THE CONSTRUCTION AND MAINTENANCE OF ALL NECESSARY UNDERGROUND OR SURFACE PUBLIC UTILITIES INCLUDING THE RIGHTS TO CONDUCT DRAINAGE AND TRIMMING ON SAID EASEMENT.

DRAINAGE EASEMENT DEFINED
 AN UNOBSTRUCTED EASEMENT FOR THE OPERATION AND MAINTENANCE OF WATERWAYS, BOTH SURFACE AND UNDERGROUND, RUNNING OVER, ACROSS, AND UNDER SAID EASEMENT.

MAINTENANCE/CONSTRUCTION EASEMENT DEFINED
 AN UNOBSTRUCTED EASEMENT FOR THE CONSTRUCTION AND MAINTENANCE OF A PUBLIC ROAD.

CONTROLLED ACCESS DEFINED
 INGRESS AND EGRESS TO, FROM OR ACROSS THE ABUTTING ROADWAY IS RESTRICTED BY THE ROAD AUTHORITY PURSUANT TO MINNESOTA STATE STATUTE 160.08.

BEARINGS
 ALL BEARINGS ARE BASED ON THE EAST LINE OF THE NW 1/4 SECTION 18-106-13 WHICH IS ASSUMED TO BEAR N01°32'22"W



Surveyor's Certificate

I hereby certify that I have surveyed and platted the property described on this plat as REPLAT OF BLOCK 2, PINWOOD MEADOWS FIRST ADDITION, COMMON INTEREST COMMUNITY NUMBER 162, that this plat is a correct representation of the survey; that all distances are correctly shown on the plat in feet and hundredths of a foot, that all monuments have been correctly placed in the ground as shown; that the outside boundary lines are correctly designated on the plat; and that there are no public highways to be designated other than as shown.

Geoffrey G Griffin
 Geoffrey G Griffin, R.L.S.
 Minnesota License Number 21940

State of Minnesota
 County of Fillmore
 The surveyor's certificate was subscribed and sworn to before me, a Notary Public, this 14th day of September, 2000.

Patricia C. Delaney
 Notary Public, County, Minnesota

My commission expires:

County Surveyor

I certify that this plat has been checked mathematically and that the plat conforms to the applicable laws, this 14 day of September, 2000.

Edward P. Kinase
 Edward P. Kinase
 Olmsted County Surveyor

Property Records and Licensing

Taxes payable in the year 2000 on the land herein described have been paid, there are no delinquent taxes and transfer has been entered this 24th day of September, 2000.

DOCUMENT NUMBER 853025

I hereby certify that this instrument was filed in the Office of Property Records and Licensing for the record on this 24th day of September, 2000, at 8 o'clock A.M., and was duly recorded in the Olmsted County records.

Daniel J. Hall
 Daniel J. Hall
 Director of Property Records & Licensing
Dan Hamueter
 Deputy

City Approval

State of Minnesota
 County of Olmsted
 City of Rochester

I, Judy K. Scherr, in and for the City of Rochester, do hereby certify that on the 18th day of SEPTEMBER, 2000, the accompanying plat was duly approved by the Common Council of the City of Rochester. In testimony thereof I have hereunto signed my name and affixed the seal of said City of Rochester this 22ND day of SEPTEMBER, 2000.

Judy K. Scherr
 Judy K. Scherr, City Clerk

Instrument of Dedication

KNOW ALL MEN BY THESE PRESENTS: That Schoenfelders Southstar, Inc. a Minnesota Corporation, owner and proprietor of the following described property in the City of Rochester, State of Minnesota, to wit:

All of LOTS 1-21, BLOCK 2, PINWOOD MEADOWS FIRST ADDITION, COMMON INTEREST COMMUNITY NUMBER 162, according to the recorded plat thereof, Olmsted County, Minnesota, containing 4.49 acres, more or less.

Have caused the same to be surveyed and platted as REPLAT OF BLOCK 2, PINWOOD MEADOWS FIRST ADDITION, COMMON INTEREST COMMUNITY NUMBER 162 and do hereby donate and dedicate to the public for the public use forever easements as shown on this plat for drainage, utility and construction purposes only.

In witness whereof said Schoenfelders Southstar, Inc. a Minnesota Corporation has caused these presents to be signed by its proper officer this 20th day of September, 2000.

Bernadine Stevens
 Bernadine Stevens, President

State of Minnesota
 County of Fillmore

The foregoing instrument was acknowledged before me this 20th day of September, 2000 by Bernadine Stevens, President of Schoenfelders Southstar, Inc. on behalf of the Corporation.

Sean Hunter
 Notary Public, Fillmore County, Minnesota
 My commission expires: 3-24-05

KNOW ALL MEN BY THESE PRESENTS: That Pinewood Meadows Association, Inc., a Minnesota Corporation, owner and proprietor of the above described property, hereby consents to the plat described herein including the dedication and donation to the public use forever of easements as shown on this plat for drainage, utility, and construction purposes only.

Pinewood Meadows Association, Inc.
 By *Deborah L. Haas*
 Deborah L. Haas, President

State of Minnesota
 County of Fillmore

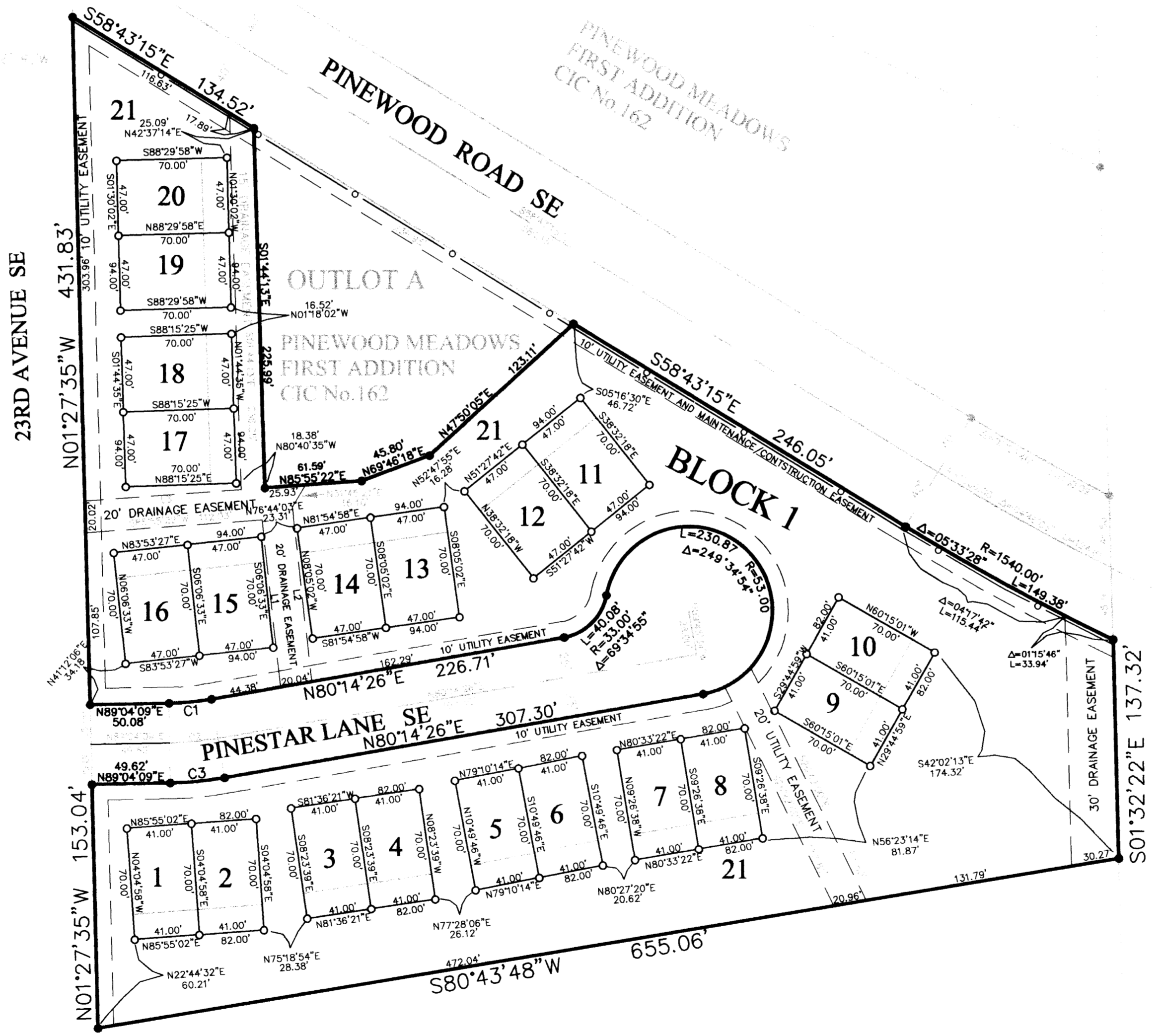
The foregoing instrument was acknowledged before me this 20th day of September, 2000 by Deborah L. Haas, President of Pinewood Meadows Association, Inc., on behalf of the Corporation.

Sean Hunter
 Notary Public
 My commission expires: 3-24-05

IRON PIPE WITH PLASTIC CAP
 STAMPED R.L.S.#21940 SET

1" = 60'

● FOUND MONUMENT
 ○ CONTROLLED ACCESS



CURVE TABLE			
CURVE	RADIUS	LENGTH	DELTA
C1	175.00'	26.97'	8°49'43"
C2	200.00'	30.82'	8°49'43"
C3	225.00'	34.67'	8°49'43"

LINE TABLE		
LINE	BEARING	DISTANCE
L1	105.57'	S06°19'35"E
L2	110.55'	S06°19'35"E
L3	99.35'	S85°55'22"W

