

PLAT OF WINDSOR HILLS FIRST SUBDIVISION OLMSTED COUNTY, MINNESOTA

OFFICIAL PLAT

SURVEYOR'S CERTIFICATE

I, Richard F. Kastler, Registered Civil Engineer and Land Surveyor, do hereby certify that at the request of Windsor Hills Company, I have surveyed and platted into lots, streets and easements as shown by the plat hereon and which shall be known as WINDSOR HILLS FIRST SUBDIVISION the following described tract of land.

Beginning at the N.E. corner, N.W. Quarter of Section 27, Township 106 North, Range 14 West of the 5th P.M.; thence S. 89°48'15" E. 608.85 feet along the N. line of the N.E. Quarter of said Section; thence S. 16°07'19" E. 357.04 feet along the westerly boundary of Windsor Chase First Subdivision; thence S. 29°45'50" E. 211.60 feet to the southwesterly corner of Lot 8, Windsor Chase First Subdivision; thence S. 52°19'30" W. 252.33 feet; thence N. 34°14'30" W. 267.43 feet; thence N. 50°47'35" W 214.28 feet; thence S. 86°28'44" W. 106.01 feet; thence S. 07°27'41" E. 513.71 feet; thence S. 68°40'52" W. 381.28 feet; thence N. 67°48'46" W. 134.40 feet; thence N. 37°56'44" W. 460.87 feet; thence N. 12°08'17" W. 589.37 feet; thence N. 90°00'00" E. 626.03 feet to the point of beginning.

And I further certify that the accompanying plat is a correct record of the survey, that all distances are correctly shown in feet and decimals of feet, that monuments (iron pins) for the guidance of future surveys have been placed in the ground as shown on the plat thus (o), that the outside boundaries are correctly shown on the plat, that wet lands are shown thereon, that said plat has not been previously platted, and that all bearings are shown in relationship to the North line of the N.W. Quarter of said Section 27, said line being assumed to lie in a due East-West direction.

Dated this 1 day of May, 1970 A.D.

Richard F. Kastler, Registered Civil Engineer and Land Surveyor No. 6405.

Subscribed and sworn to before me a Notary Public this 1 day of May, 1970 A.D.

My commission expires March 11, 1976.

S. Arlene Adams, Notary Public, Olmsted County, Minnesota

We, the members of the Township Board of Supervisors for Rochester Township, Olmsted County, Minnesota, do hereby certify that we have approved this accompanying plat in testimony whereof we have signed our names this 14 day of May, 1970 A.D.

Ed F. Ruben, Chairman; P. M. Gault, Supervisor; S. J. Friedrichs, Supervisor

Health Department Restriction

Approved as to water supply and sewage disposal with the following restriction running with the land for so long as lots of this plat are not connected with a community sewer system, all of which is hereby made a part of the plat. No lot shall be subdivided.

William L. Polk, County Public Health Engineer

We, the members of the Olmsted County Planning Advisory Commission do hereby certify that we have examined the plat as shown and find that it conforms to the provisions of the Subdivision Ordinance of the County of Olmsted.

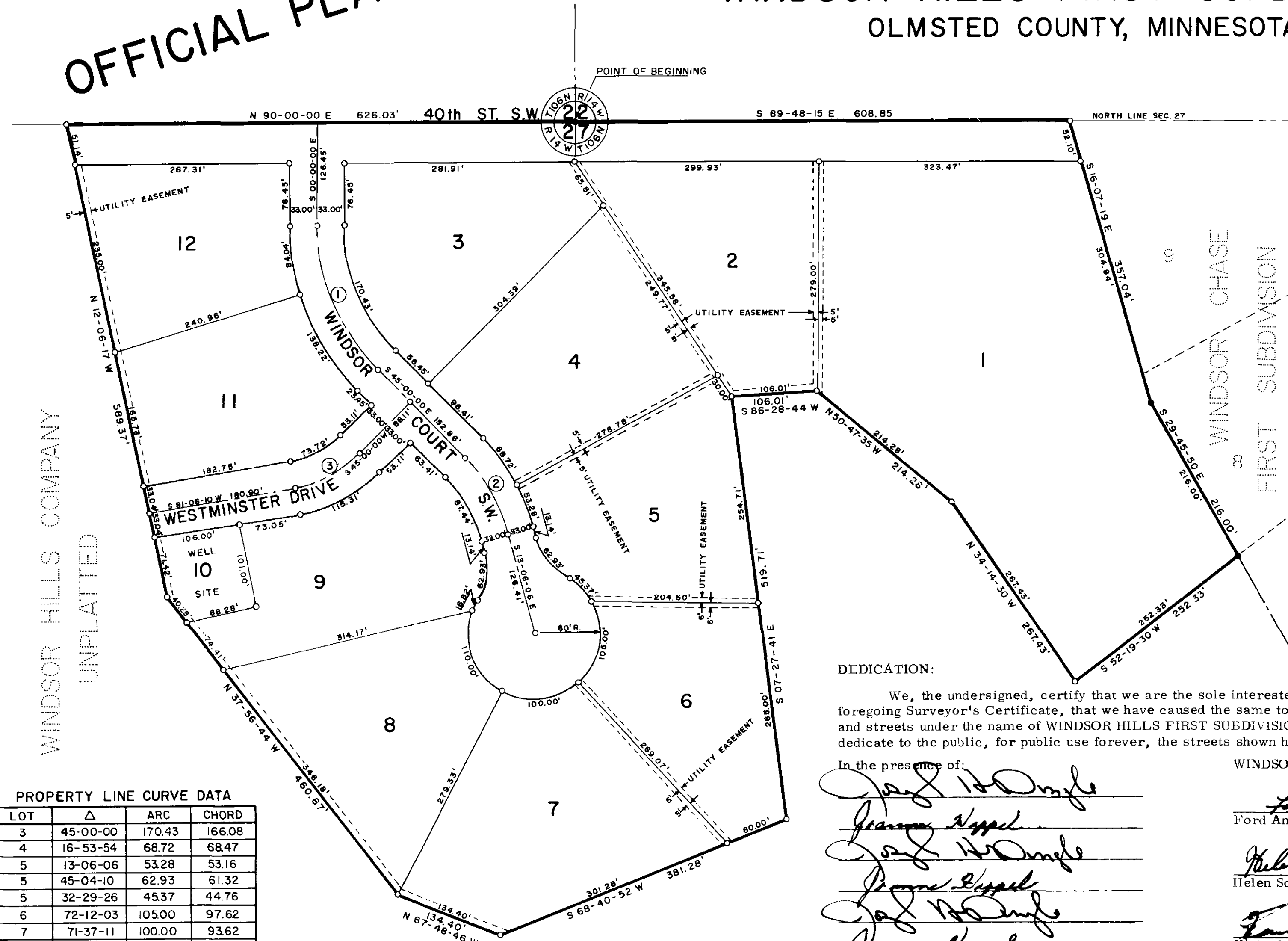
Ed F. Ruben

Approved by County Highway Department.

Arla Schellhammer

UTILITY EASEMENTS DEFINED

An unobstructed easement for the construction and maintenance of all necessary overhead, underground or surface, public and private utilities including rights to conduct drainage and trimming on said easement.



PROPERTY LINE CURVE DATA

Table with 4 columns: LOT, Δ, ARC, CHORD. Lists curve data for lots 3 through 12.

℄ CURVE DATA

Table with 5 columns: CURVE, Δ, T, L, R. Lists curve data for curves 1 through 3.

DEDICATION:

We, the undersigned, certify that we are the sole interested parties in the tract of land described in the foregoing Surveyor's Certificate, that we have caused the same to be surveyed and platted into lots, easements and streets under the name of WINDSOR HILLS FIRST SUBDIVISION as shown hereon and that we do hereby dedicate to the public, for public use forever, the streets shown hereon, and grant easements as shown hereon.

In the presence of: [Signatures of witnesses]

WINDSOR HILLS FIRST SUBDIVISION [Signatures of interested parties]

State of Minnesota ss County of Olmsted

On this 18 day of May, 1970 A.D. before me a Notary Public in and for said county, personally appeared Ford Anderson, Helen Schultz and Kenneth W. Vaughan of the Windsor Hills Company, and to me personally known to be the persons described in and who executed the foregoing instrument and acknowledge that they executed the same as their free act and deed by the authority of their respective members.

Jay W. Dingle, Notary Public, Olmsted County, Minnesota My Commission expires 12-14-76

State of Minnesota ss County of Ramsey

On 8th MAY, 1970, the above named officers of The Federal Land Bank of Saint Paul, known to me to be such officers, and by me being duly sworn, said that they are such officers, that the seal affixed hereto is the corporate seal, that this instrument was executed on behalf of the corporation by authority of its Board of Directors as the free act and deed of the corporation.

C. M. Soukup, Notary Public, Ramsey County, Minnesota My Commission expires MAY 12, 1973

MONUMENTS SET: FOUND: State of Minnesota County of Olmsted Filed for record this 11th day of Jan 1970 A.D. at 12:05 o'clock P.M. in book 2 of Plats on page 1. Taxes paid and entered this 4th day of June 1970 A.D. Taxes for the year 1970 A.D. on the lands described within are paid. [Signatures: Register of Deeds, County Auditor, County Treasurer]