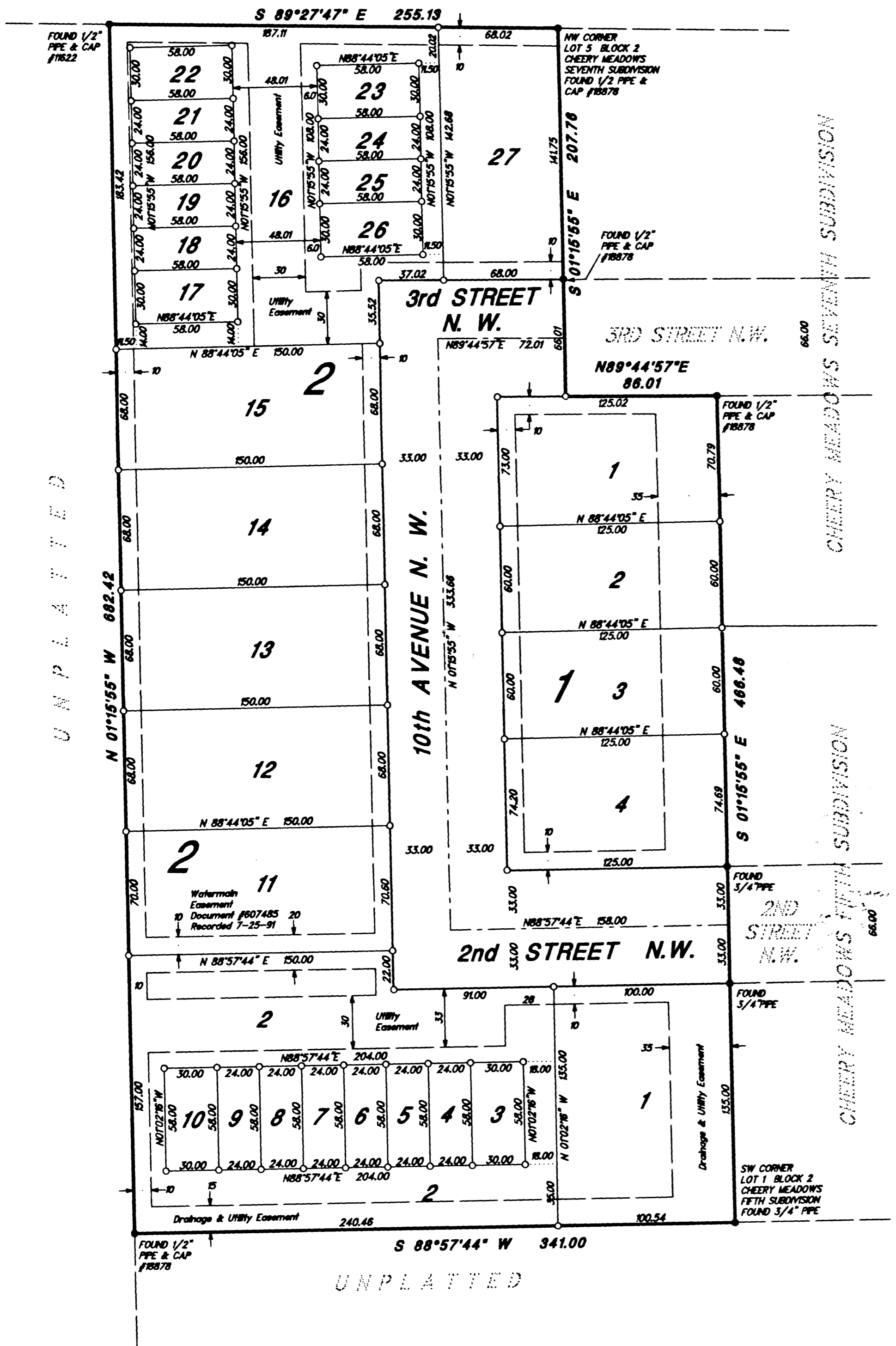


OFFICIAL PLAT

# CHEERY MEADOWS NINTH SUBDIVISION

DAKOTA, MINNESOTA & EASTERN RAILROAD (UNPLATTED)



BEARINGS ARE IN RELATIONSHIP WITH THE MOST WESTERLY LINE OF CHEERY MEADOWS SEVENTH SUBDIVISION WHICH IS ASSUMED S01°15'55"E.

0 - DENOTES 1/2" X 2" PPE SET WITH PLASTIC CAP INSCRIBED L.S. 1887B.

**INSTRUMENT OF DEDICATION**

KNOW ALL PERSONS BY THESE PRESENTS: That Et-Win LLC, a Minnesota Limited Liability Company; owner and proprietor of the following described property situated in the City of Byron, County of Olmsted, State of Minnesota to wit:

That part of the South Half of the Northeast Quarter of Section 31, Township 107, Range 15, City of Byron, Olmsted County, Minnesota, described as follows: Beginning at the Northwest corner of Lot 5, Block 2, Cheery Meadows Seventh Subdivision; thence South 01°15'55" East, along the most westerly line of said Subdivision, 207.76 feet; thence North 89°44'57" East (for purposes of this description bearings are assumed and based upon the most westerly line of said Cheery Meadows Seventh Subdivision being South 01°15'55" East) along the line of said Subdivision, 86.01 feet; thence South 01°15'55" East along the line of said Subdivision and the westerly line of Cheery Meadows Fifth Subdivision, 466.48 feet to the Southwest corner of Lot 1, Block 2, Cheery Meadows Fifth Subdivision; thence South 88°57'44" West, on the prolongation westerly of the southerly line of said Lot 1, a distance of 341.00 feet; thence North 01°15'55" West, 682.42 feet to the southerly right of way line of the Dakota, Minnesota, and Eastern Railroad; thence South 89°27'47" East, along said right of way line, 255.13 feet to the point of beginning; containing 4.90 acres, more or less.

Have caused the same to be surveyed and platted as CHEERY MEADOWS NINTH SUBDIVISION and do hereby donate and dedicate to the public for public use forever, the thoroughfares, and drainage and utility easements as shown on this plat. In witness whereof the above named owners have caused these presents to be signed this 8<sup>th</sup> day of June, 2000.

Et-Win, LLC  
*Erroy V. Bessler*  
 Erroy V. Bessler, Governor

*Darwin Olson*  
 Darwin Olson, Governor

STATE OF MINNESOTA  
 COUNTY OF OLMTSTED

The foregoing instrument was acknowledged before me this 8<sup>th</sup> day of June, 2000 by Erroy V. Bessler, Governor and Darwin Olson, Governor of Et-Win LLC, a Minnesota Limited Liability Company, on behalf of the company.

*Lois Hubbard*  
 Notary Public

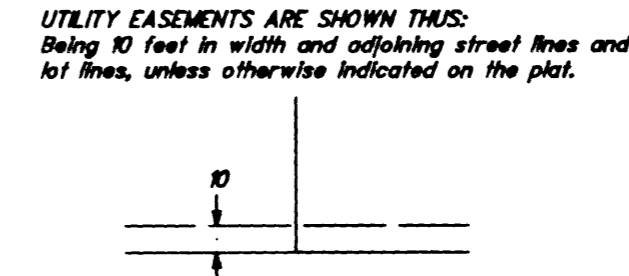
**SURVEYOR'S CERTIFICATE**

I do hereby certify that I have surveyed and platted the property described on this plat as CHEERY MEADOWS NINTH SUBDIVISION; that this plat is a correct representation of said survey; that all distances are correctly shown on said plat in feet and hundredths of a foot; that all monuments have been correctly placed in the ground as shown on the plat; that the outside boundary lines are correctly designated on the plat; that there are no wet lands as defined in MS 505.02, Subd. 1, or public highways to be designated on said plat other than as shown.

*Jeanne C. Gouvin*  
 Jeanne C. Gouvin  
 Minnesota License No. 1887B

**UTILITY EASEMENT DEFINED:**  
 An unobstructed easement for the construction and maintenance of all necessary overhead, underground or surface public utilities, including rights to conduct drainage and trimming on said easement.

**DRAINAGE EASEMENT DEFINED:**  
 An unobstructed easement for the construction and maintenance of waterways, both surface and subsurface, running over, across, and under said easement.



STATE OF MINNESOTA  
 COUNTY OF OLMTSTED

The foregoing Surveyor's Certificate was acknowledged before me this 8<sup>th</sup> day of June, 2000, by Jeanne C. Gouvin, Minnesota License No. 1887B.

*Cedric Schultz*  
 CEDRIC SCHULTZ  
 NOTARY PUBLIC - MINNESOTA  
 My Comm. Exp. Jan. 31, 2005

*Cedric Schultz*  
 Notary Public

STATE OF MINNESOTA  
 COUNTY OF OLMTSTED  
 CITY OF BYRON

We do hereby certify that on the 8<sup>th</sup> day of June, 2000, the City Council of the City of Byron, Olmsted County, Minnesota, approved this plat.

*Janita Nelson*  
 Mayor

*Wendy Blue-Hoef*  
 City Clerk

I hereby certify that this plat has been checked mathematically and that the plat conforms to the applicable platting laws. Approved this 7<sup>th</sup> day of June, 2000.

*Edward P. Knull*  
 Olmsted County Surveyor

Taxes payable in the year 2000 on the land herein described have been paid and there are no delinquent taxes and transfer has been entered this 19<sup>th</sup> day of June, 2000.

*Daniel J. Hall*  
 Olmsted County Auditor/Treasurer

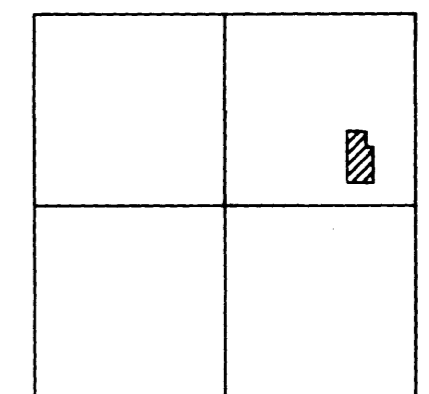
By *Wendy von Wald*  
 Deputy

DOCUMENT NUMBER A-844837

I hereby certify that this instrument was filed in the office of the County Recorder for record on this 19<sup>th</sup> day of June, 2000, at 3 o'clock p.m. and was duly recorded in the Olmsted County Records.

*Daniel J. Hall by Wendy von Wald*  
 Olmsted County Recorder Deputy

Location Map  
 Section 31-107-15



**LAND CONSULTANTS**  
 OF SOUTHERN MINNESOTA, INC.

1418 First Avenue N. E.  
 Rochester, Minnesota 55906  
 507-288-8855

BOUNDARY SURVEYS •  
 LAND SUBDIVISION •  
 ENGINEERING SERVICES •