

WEATHERHILL FIRST SUBDIVISION

OLMSTED COUNTY, MINNESOTA

SURVEYORS CERTIFICATE

I, LEONARD M. SANKSTONE, REGISTERED LAND SURVEYOR, DO HEREBY CERTIFY THAT, AT THE REQUEST OF ROGER C. SCHMUCK AND ELIZABETH D. SCHMUCK, HIS WIFE, I HAVE SURVEYED AND PLATTED INTO LOTS, BLOCKS, EASEMENTS, ROAD AND DRIVE AS SHOWN ON THE ACCOMPANYING PLAT ON WHICH THIS CERTIFICATE IS WRITTEN, THE FOLLOWING DESCRIBED TRACT.

A TRACT OF LAND IN THE WEST ONE-HALF OF SECTION 8, TOWNSHIP 106 NORTH, RANGE 14 WEST, DESCRIBED AS FOLLOWS:
COMMENCING AT THE WEST QUARTER CORNER OF SAID SECTION 8, THENCE ON AN ASSUMED BEARING OF NORTH A DISTANCE OF 806.70 FEET ALONG THE WEST LINE OF SAID SECTION 8 TO THE POINT OF BEGINNING; THENCE NORTH 500.00 FEET ALONG SAID WEST LINE OF SECTION 8; THENCE S 88°-36'-30"-E FOR A DISTANCE OF 57.05 FEET; THENCE ON A CURVE TO THE RIGHT (RADIUS 183.78 FEET) A DISTANCE OF 57.89 FEET; THENCE S 67°-26'-30"-E A DISTANCE OF 202.04 FEET; THENCE ON A CURVE TO THE LEFT (RADIUS 616.73 FEET) A DISTANCE OF 103.69 FEET; THENCE S 77°-04'-30"-E A DISTANCE OF 435.51 FEET; THENCE ON A CURVE TO THE LEFT (RADIUS 110.45 FEET) A DISTANCE OF 94.56 FEET; THENCE N 32°-58'-15"-E A DISTANCE OF 103.60 FEET; THENCE ON A CURVE TO THE RIGHT (RADIUS 163.22 FEET) A DISTANCE OF 166.42 FEET; THENCE S 88°-36'-30"-E A DISTANCE OF 97.34 FEET; THENCE S 0°-46'-30"-E A DISTANCE OF 268.08 FEET; THENCE S 14°-28'-25"-E A DISTANCE OF 274.03 FEET; THENCE S 18°-33'-55"-E A DISTANCE OF 329.12 FEET; THENCE S 7°-15'-35"-E A DISTANCE OF 321.00 FEET; THENCE S 10°-16'-55"-W A DISTANCE OF 24.00 FEET; THENCE S 88°-34'-00"-E A DISTANCE OF 81.88 FEET; THENCE S 0°-17'-00"-W A DISTANCE OF 471.54 FEET; THENCE S 72°-04'-10"-E A DISTANCE OF 52.50 FEET; THENCE ON A CURVE TO THE LEFT (RADIUS 196.18 FEET) A DISTANCE OF 96.44 FEET; THENCE N 79°-45'-50"-E A DISTANCE OF 86.55 FEET; THENCE ON A CURVE TO THE RIGHT (RADIUS 153.84 FEET) A DISTANCE OF 208.81 FEET TO THE NORTHERLY RIGHT-OF-WAY LINE OF C.S.A.H. NO. 25; THENCE S 67°-31'-50"-W A DISTANCE OF 66.00 FEET ALONG SAID RIGHT-OF-WAY LINE; THENCE ON A CURVE TO THE LEFT (RADIUS 87.84 FEET) A DISTANCE OF 119.23 FEET; THENCE S 79°-45'-50"-W A DISTANCE OF 86.55 FEET; THENCE ON A CURVE TO THE RIGHT (RADIUS 262.18 FEET) A DISTANCE OF 128.89 FEET; THENCE N 72°-04'-10"-W A DISTANCE OF 154.09 FEET; THENCE ON A CURVE TO THE LEFT (RADIUS 126.16 FEET) A DISTANCE OF 87.34 FEET; THENCE S 68°-15'-50"-W A DISTANCE OF 170.83 FEET; THENCE ON A CURVE TO THE RIGHT (RADIUS 192.16 FEET) A DISTANCE OF 231.69 FEET; THENCE N 42°-39'-10"-W A DISTANCE OF 106.43 FEET; THENCE ON A CURVE TO THE RIGHT (RADIUS 351.31 FEET) A DISTANCE OF 229.83 FEET; THENCE N 5°-10'-10"-W A DISTANCE OF 128.62 FEET TO THE EAST WEST ONE-QUARTER LINE OF SAID SECTION 8; THENCE N 5°-10'-10"-W A DISTANCE OF 106.91 FEET; THENCE ON A CURVE TO THE LEFT (RADIUS 1399.40 FEET) A DISTANCE OF 362.29 FEET; THENCE N 20°-00'-10"-W A DISTANCE OF 250.77 FEET; THENCE ON A CURVE TO THE RIGHT (RADIUS 183.78 FEET) A DISTANCE OF 85.27 FEET; THENCE N 6°-34'-50"-E A DISTANCE OF 53.15 FEET; THENCE S 89°-30'-25"-W A DISTANCE OF 575.93 FEET TO THE POINT OF BEGINNING. ALL BEING IN OLSTED COUNTY, MINNESOTA.

AND I FURTHER CERTIFY THAT SAID PLAT IS A TRUE AND CORRECT REPRESENTATION OF THE SURVEY AND THAT ALL DISTANCES ARE SHOWN IN FEET AND DECIMALS OF FEET; THAT MONUMENTS (IRON PINS) FOR THE GUIDANCE OF FUTURE SURVEYS HAVE BEEN PLACED IN THE GROUND AS SHOWN THUS (0); THAT THE OUTSIDE BOUNDARIES ARE CORRECTLY SHOWN ON THE PLAT, THAT THERE ARE NO WET LANDS THEREON AND THAT SAID LANDS HAVE NOT PREVIOUSLY BEEN PLATTED.

DATED THIS 15TH DAY OF NOVEMBER, 1968 A.D.

Leonard M. Sankstone
LEONARD M. SANKSTONE
REG. NO. 5325

SUBSCRIBED AND SWORN BEFORE ME A NOTARY PUBLIC THIS 15TH DAY OF NOVEMBER, 1968 A.D.

A.P. WITTICH
A.P. Wittich
NOTARY PUBLIC
OLMSTED COUNTY, MINNESOTA

MY COMMISSION EXPIRES 6/4/70

DEDICATION

WE THE UNDERSIGNED, ROGER C. SCHMUCK AND ELIZABETH D. SCHMUCK, HIS WIFE, DO HEREBY CERTIFY THAT WE ARE THE SOLE INTERESTED PARTIES IN THE TRACT OF LAND DESCRIBED IN THE FOREGOING SURVEYOR'S CERTIFICATE WHICH IS WRITTEN ON THE PLAT ON WHICH THIS INSTRUMENT IS WRITTEN; THAT WE HAVE CAUSED THE SAME TO BE PLATTED INTO LOTS, BLOCKS, EASEMENTS, ROAD, AND DRIVE UNDER THE NAME OF WEATHERHILL FIRST SUBDIVISION AS SHOWN BY SAID PLAT AND THAT WE DO HEREBY DEDICATE TO THE PUBLIC FOR THE PUBLIC USE FOREVER THE ROAD AND DRIVE SHOWN THEREON, AND GRANT THE EASEMENTS SHOWN THEREON.

IN THE PRESENCE OF
Wayne Peterson
Melva Nelson
Roger C. Schmuck
ROGER C. SCHMUCK
Elizabeth D. Schmuck
ELIZABETH D. SCHMUCK

STATE OF MINNESOTA)
COUNTY OF OLSTED) S.S.

I, ROSS BROWNING, COUNTY AUDITOR IN AND FOR SAID COUNTY, DO HEREBY CERTIFY THAT THE ANNEXED PLAT WAS DULY APPROVED BY THE BOARD OF COUNTY COMMISSIONERS AT A MEETING HELD ON THE 10TH DAY OF DECEMBER, 1968 A.D. IN TESTIMONY WHEREOF, I HAVE SIGNED MY NAME AND AFFIXED THE SEAL OF SAID COUNTY THIS 11TH DAY OF DECEMBER, 1968 A.D.

Ross Browning
COUNTY AUDITOR

WE, THE MEMBERS OF THE TOWNSHIP BOARD OF SUPERVISORS FOR ROCHESTER TOWNSHIP, OLSTED COUNTY, MINNESOTA, DO HEREBY CERTIFY THAT WE HAVE APPROVED THE ACCOMPANYING PLAT. IN TESTIMONY WHEREOF WE HAVE SIGNED OUR NAMES THIS 16TH DAY OF NOVEMBER, 1968 A.D.

Chairman
CHAIRMAN
Supervisor
SUPERVISOR
Supervisor
SUPERVISOR

WE, THE MEMBERS OF THE EXECUTIVE COMMITTEE OF THE OLSTED COUNTY PLANNING AND ADVISORY COMMISSION DO HEREBY CERTIFY THAT WE HAVE EXAMINED THE PLAT AS SHOWN AND FIND THAT IT CONFORMS TO THE PROVISIONS OF THE ZONING ORDINANCE OF THE COUNTY OF OLSTED.

Chairman of Commission
CHAIRMAN OF COMMISSION

STATE OF MINNESOTA)
COUNTY OF OLSTED) S.S.

I HEREBY CERTIFY THAT THIS PLAT WAS FILED IN THIS OFFICE FOR RECORD ON THIS 3RD DAY OF JANUARY, 1969 A.D. AT 11:14 O'CLOCK A.M.

Registrar
REGISTER OF DEEDS
OLMSTED COUNTY, MINNESOTA
APPROVED BY THE OLSTED COUNTY HIGHWAY DEPARTMENT
County Engineer
COUNTY ENGINEER

ACKNOWLEDGEMENT

STATE OF MINNESOTA)
COUNTY OF OLSTED) S.S.
ON THIS 10TH DAY OF DECEMBER, 1968 A.D. BEFORE ME A NOTARY PUBLIC IN AND FOR SAID COUNTY, PERSONALLY APPEARED ROGER C. SCHMUCK AND ELIZABETH D. SCHMUCK, HIS WIFE, TO ME PERSONALLY KNOWN, WHO, BEING EACH BY ME DULY SWORN, EXECUTED THE FOREGOING INSTRUMENT AND ACKNOWLEDGED THAT THEY EXECUTED THE SAME AS THEIR FREE ACT AND DEED.

Notary Public
NOTARY PUBLIC
OLMSTED COUNTY, MINNESOTA

MY COMMISSION EXPIRES

TAXES PAID AND TRANSFER ENTERED THIS 3RD DAY OF JANUARY, 1969 A.D.

County Auditor
COUNTY AUDITOR

TAXES FOR THE YEAR 1968 ON LANDS DESCRIBED WITHIN ARE PAID.

County Treasurer
COUNTY TREASURER

APPROVED AS TO WATER SUPPLY AND SEWAGE DISPOSAL THIS 26TH DAY OF NOVEMBER, 1968 A.D.

Health Officer
HEALTH OFFICER
OLMSTED COUNTY HEALTH UNIT

WEATHERHILL FIRST SUBDIVISION

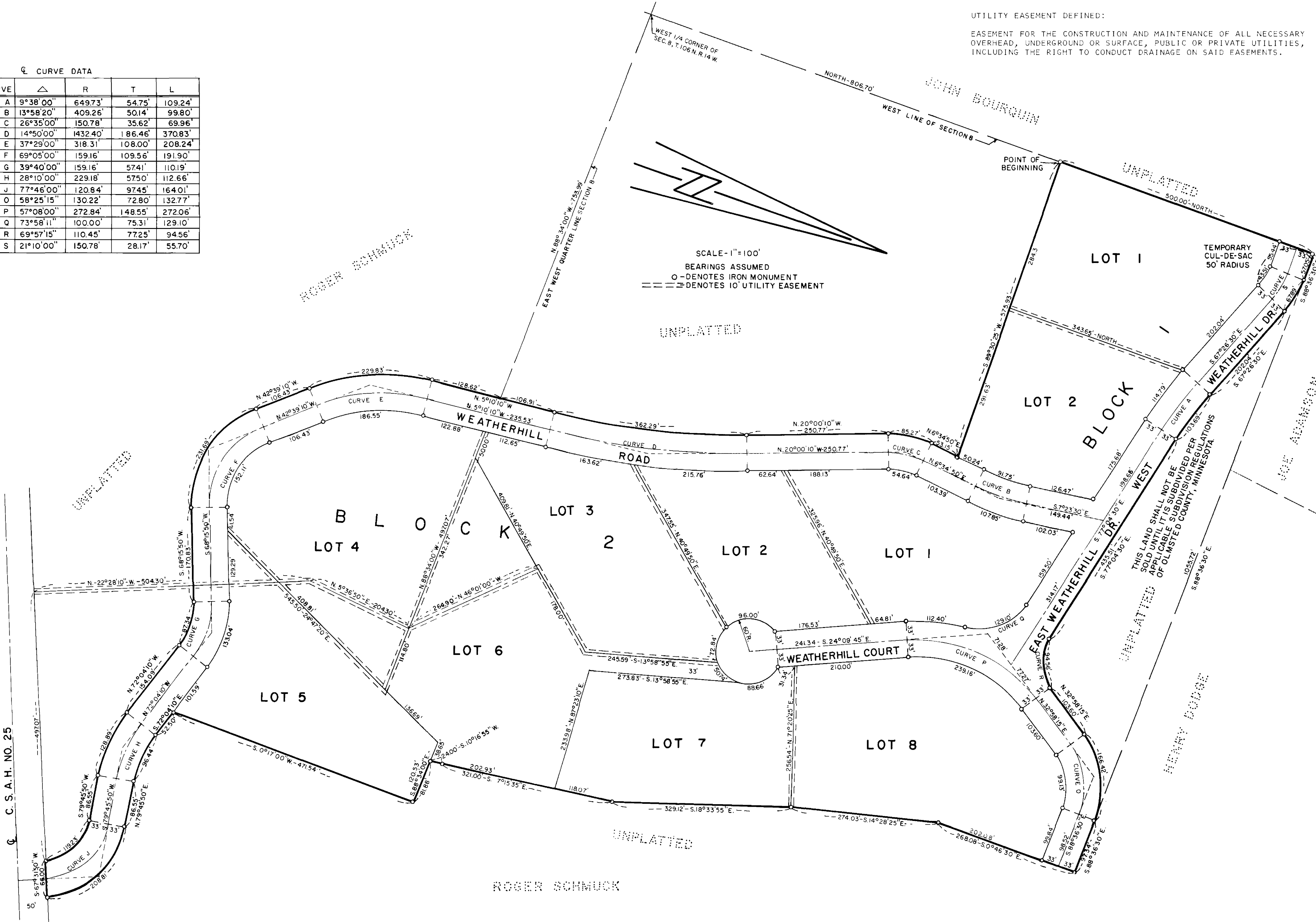
OLMSTED COUNTY, MINNESOTA

UTILITY EASEMENT DEFINED:

EASEMENT FOR THE CONSTRUCTION AND MAINTENANCE OF ALL NECESSARY OVERHEAD, UNDERGROUND OR SURFACE, PUBLIC OR PRIVATE UTILITIES, INCLUDING THE RIGHT TO CONDUCT DRAINAGE ON SAID EASEMENTS.

☉ CURVE DATA

CURVE	Δ	R	T	L
A	9°38'00"	649.73'	54.75'	109.24'
B	13°58'20"	409.26'	50.14'	99.80'
C	26°35'00"	150.78'	35.62'	69.96'
D	14°50'00"	1432.40'	186.46'	370.83'
E	37°29'00"	318.31'	108.00'	208.24'
F	69°05'00"	159.16'	109.56'	191.90'
G	39°40'00"	159.16'	57.41'	110.19'
H	28°10'00"	229.18'	57.50'	112.66'
J	77°46'00"	120.84'	97.45'	164.01'
O	58°25'15"	130.22'	72.80'	132.77'
P	57°08'00"	272.84'	148.55'	272.06'
Q	73°58'11"	100.00'	75.31'	129.10'
R	69°57'15"	110.45'	77.25'	94.56'
S	21°10'00"	150.78'	28.17'	55.70'



SCALE - 1" = 100'
 BEARINGS ASSUMED
 ○ DENOTES IRON MONUMENT
 --- DENOTES 10' UTILITY EASEMENT

THIS LAND SHALL NOT BE SOLD UNTIL IT IS SUBDIVIDED PER APPLICABLE SUBDIVISION REGULATIONS OF OLMSTED COUNTY, MINNESOTA

ROGER SCHMUCK