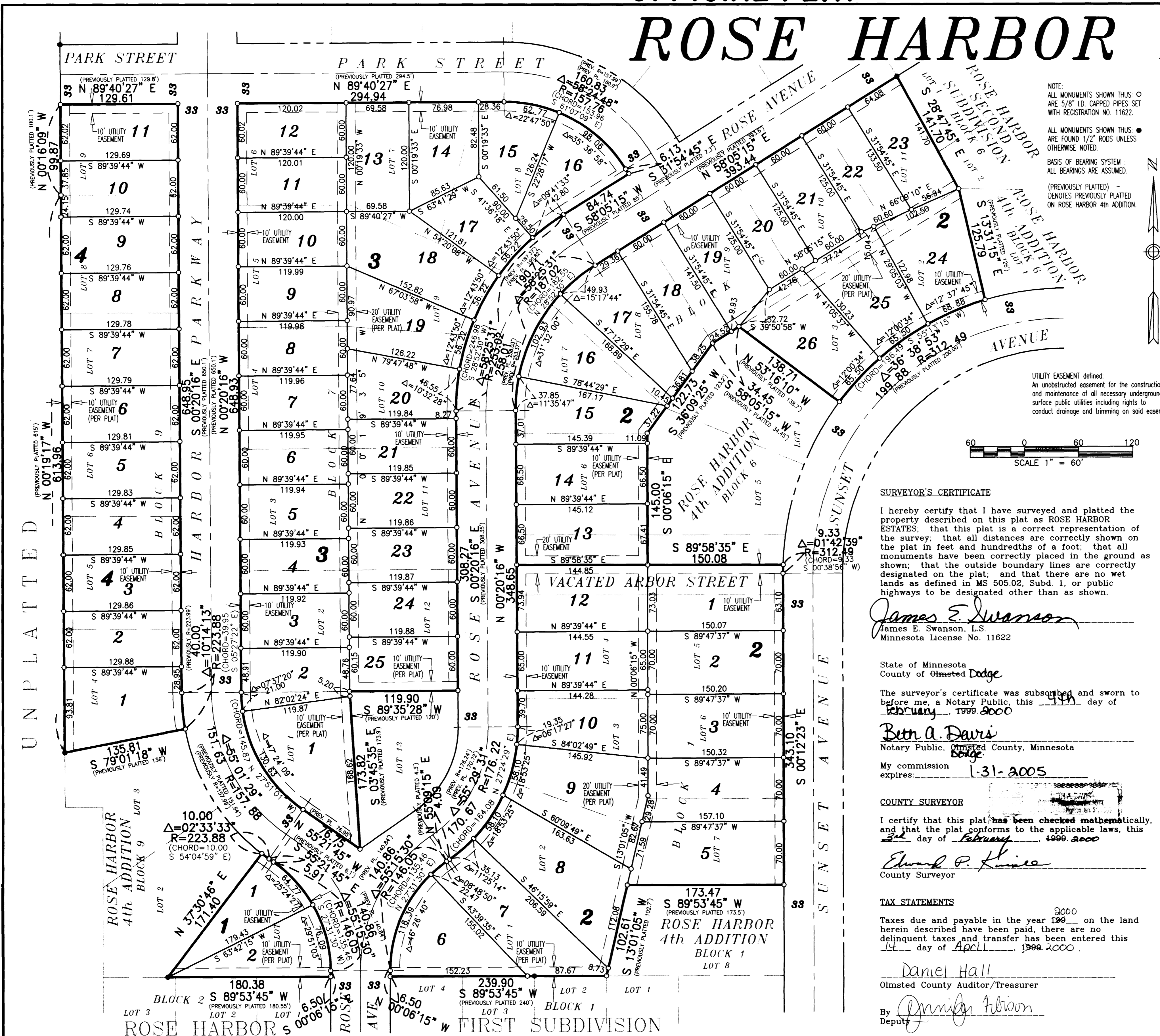
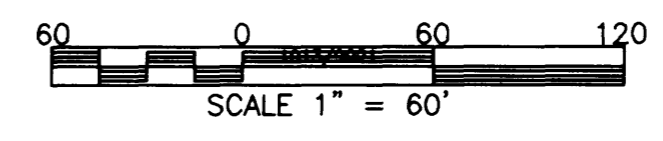
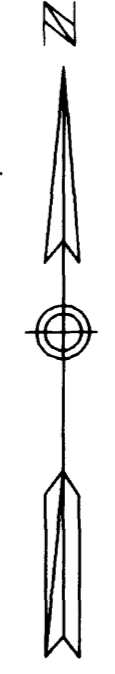


OFFICIAL PLAT

ROSE HARBOR ESTATES



NOTE: ALL MONUMENTS SHOWN THIS: O ARE 5/8" I.D. CAPPED PIPES SET WITH REGISTRATION NO. 11622. ALL MONUMENTS SHOWN THIS: • ARE FOUND 1/2" RODS UNLESS OTHERWISE NOTED. BASIS OF BEARING SYSTEM: ALL BEARINGS ARE ASSUMED. (PREVIOUSLY PLATTED) = DENOTES PREVIOUSLY PLATTED ON ROSE HARBOR 4th ADDITION.



INSTRUMENT OF DEDICATION

KNOW ALL MEN BY THESE PRESENTS: That Western Walls, Inc., a Minnesota Corporation, owner and proprietor of the following described property situated in the County of Olmsted, State of Minnesota, to wit:

Lots 1-7 inclusive, Block 1; Lots 2, 3, 6, 7, 8, 9, 10 and 11, Block 6; Lots 1-12 inclusive, Block 7; and Lots 1, 4, 5, 6, 7, 8, and 9, Block 9, all in ROSE HARBOR 4th ADDITION, Olmsted County, Minnesota, together with all of the vacated Arbor Street lying between Lot 4, Block 1, and Lot 6, Block 6, and the south one half of said street lying northerly of and adjacent to Lot 5, Block 1.

Containing in all 12.93 acres more or less.

has caused the same to be surveyed and platted as ROSE HARBOR ESTATES and does hereby dedicate to the public for the public use forever, the easements as shown on this plat for drainage and utility purposes only

In witness whereof said Western Walls, Inc., a Minnesota Corporation, has caused these presents to be signed by its proper officer this 30th day of December, 1999.

Charles Owen DeWitz, Vice President

State of Minnesota
County of Olmsted

The foregoing instrument was acknowledged before me this 30th day of December, 1999, by Charles Owen DeWitz, Vice President, on behalf of the Corporation.

Notary Public, Olmsted County, Minnesota

My commission expires

SURVEYOR'S CERTIFICATE

I hereby certify that I have surveyed and platted the property described on this plat as ROSE HARBOR ESTATES, that this plat is a correct representation of the survey; that all distances are correctly shown on the plat in feet and hundredths of a foot; that all monuments have been correctly placed in the ground as shown; that the outside boundary lines are correctly designated on the plat; and that there are no wet lands as defined in MS 505.02, Subd. 1, or public highways to be designated other than as shown.

James E. Swanson, L.S.
Minnesota License No. 11622

State of Minnesota
County of Olmsted

The surveyor's certificate was subscribed and sworn to before me, a Notary Public, this 19th day of February, 1999.

Beth A. Davis, Notary Public, Olmsted County, Minnesota

My commission expires: 1-31-2005

COUNTY SURVEYOR

I certify that this plat has been checked mathematically, and that the plat conforms to the applicable laws, this 3rd day of February, 1999.

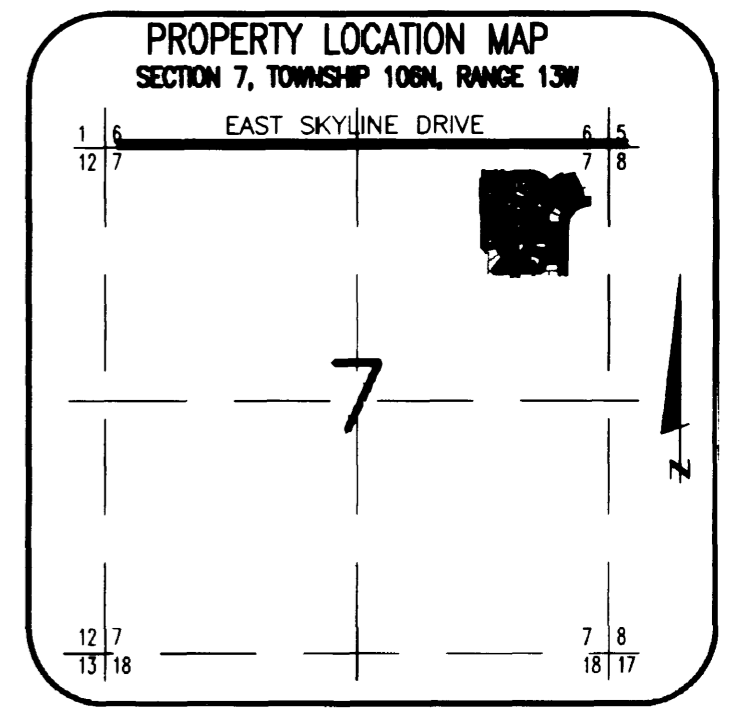
Edward P. Kinise, County Surveyor

TAX STATEMENTS

Taxes due and payable in the year 1999 on the land herein described have been paid, there are no delinquent taxes and transfer has been entered this 14th day of April, 1999.

Daniel Hall, Olmsted County Auditor/Treasurer

Deputy



CITY APPROVAL

State of Minnesota
County of Olmsted
City of Rochester

I, Judy K. Scherr, City Clerk, in and for the City of Rochester, do hereby certify that on the 7th day of July, 1999, the accompanying plat was duly approved by the Common Council of the City of Rochester. In testimony whereof I have hereunto signed my name and affixed the seal of said City of Rochester this 14th day of April, 1999.

Judy Kay Scherr, City Clerk

COUNTY RECORDER

DOCUMENT NUMBER A-839374

I hereby certify that this instrument was filed in the office of the County Recorder for record on this 14th day of April, 2000, at 3:12 o'clock P.M., and was duly recorded in the Olmsted County records.

Daniel Hall, County Recorder

Deputy

PREPARED BY: MCGHEE & BETTS, INC. CONSULTING ENGINEERS, PLANNERS, LAND SURVEYORS ROCHESTER, MINNESOTA