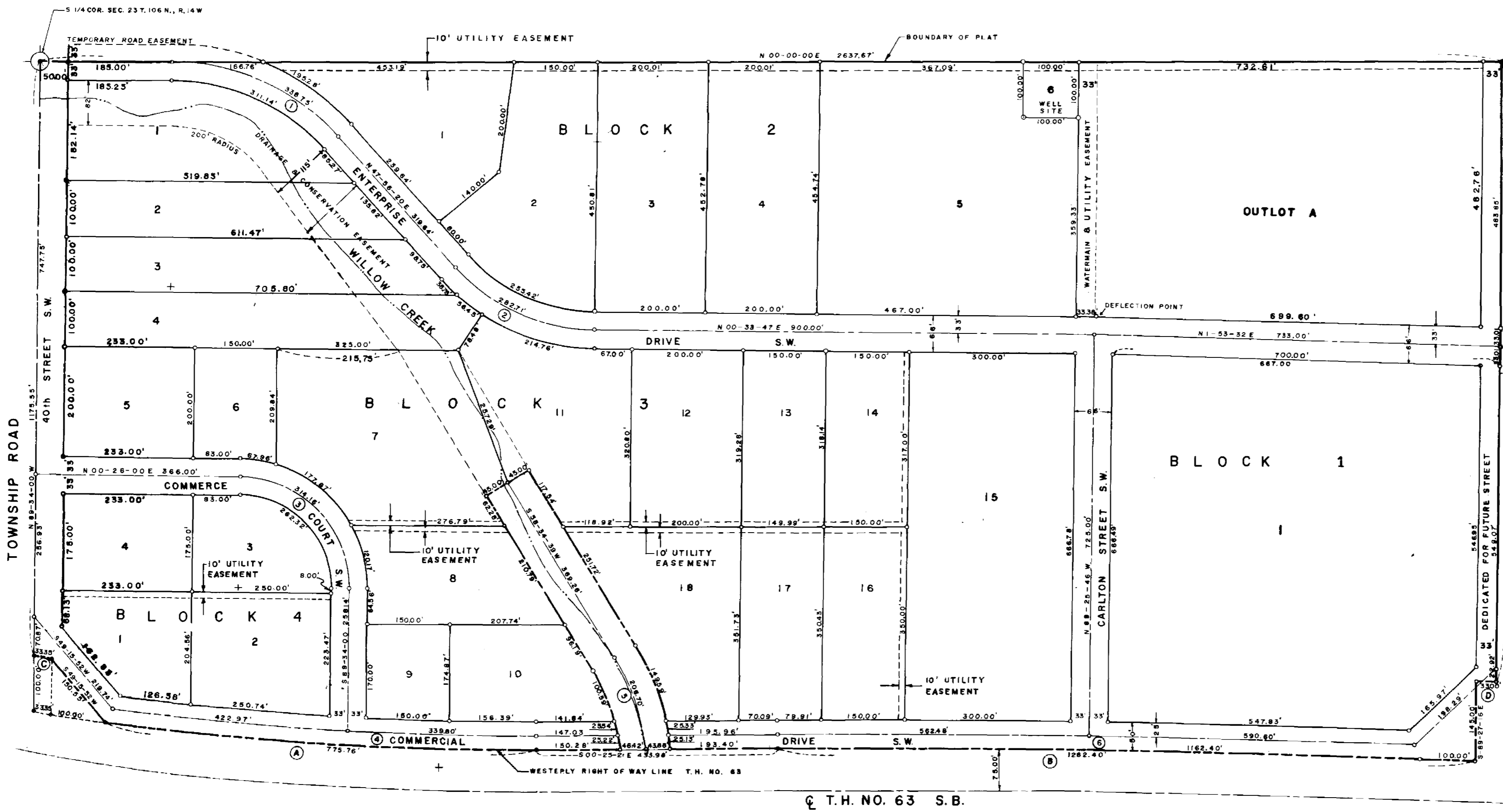
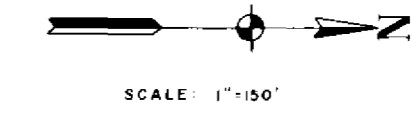


ORIGINAL

PLAT OF WILLOW CENTER SUBDIVISION OLMSTED COUNTY, MINNESOTA



DEDICATION We, the undersigned, certify that we are the sole interested parties in the tract of land described in the foregoing Surveyor's Certificate... ROCHESTER BLOCK & SUPPLY CO., INC. Donald Dymason, Carlton F. Penz, President; Kenneth C. Blew, Ruth E. Penz, Secretary; Leo N. Herrick, Alta Herrick, Donald W. Fisher, Opal Fisher.

Notary Public statements: Wayne E. Drews, Notary Public, Olmsted County, State of Minn., My Commission expires Oct-29-1969; Opal Fisher, Notary Public, Olmsted County, State of Minn., My Commission expires May 17 1972.

We the members of the Executive Committee of the Olmsted Planning Advisory Commission do hereby certify that we have examined the attached plat and find that it conforms to the provisions of the zoning ordinance of the County of Olmsted.

Robert H. Badger, County Engineer; Carl Schellhammer, County Auditor.

HEALTH DEPARTMENT RESTRICTION Approved as to water supply and sewage disposal with the following restriction running with the land for so long as lots of this plat are not connected with a community sewer system... William P. Pelt, County Public Health Engineer.

I, Richard F. Kastler, Registered Civil Engineer and Land Surveyor, do hereby certify that at the request of Rochester Block & Supply Company, Inc. and Donald W. Fisher I have surveyed and platted into lots, streets and easements as shown by the plat hereon and which shall be known as Willow Center Subdivision, the following described tract of land.

That part of the Southeast quarter of Section 23, Township 106 North, Range 14 West of the 6th P.M., lying westerly of Trunk Highway 63.

And I further certify that the accompanying plat is a correct record of the survey, that all distances are correctly shown in feet and decimals of feet, that monuments (iron pins) for the guidance of future surveys have been placed in the ground as shown on the plat thus (o), that the outside boundaries are correctly shown on the plat, that wet lands are shown thereon, that said plat has not been previously platted and that all bearings are shown in relationship to the North-South line of the West line of Willow Center Subdivision, said line being assumed to lie in a due North-South direction.

Dated this 24 day of Sept., 1968 A.D. Richard F. Kastler, Registered Civil Engineer & Land Surveyor No. 6405.

Subscribed and sworn to before me, a Notary Public this 24 day of Sept., 1968 A.D. Wayne E. Drews, Notary Public, Olmsted County, Minnesota.

My Commission expires Oct-29-1969.

FINAL PLAT PREPARED BY Wallace Holland Kastler & Schmitz, Consulting Engineers and Planners 4900 South Broadway, Rochester, Minnesota.

Approved by County Highway Department

PROPERTY LINE CURVE DATA table with columns: BLOCK, LOT, DELTA, ARC, CHORD. Lists data for lots 1-18 across blocks 1-4.

CURVE DATA table with columns: CURVE, DELTA, T, L, D. Lists data for curves 1-6.

BOUNDARY CURVE DATA table with columns: CURVE, DELTA, ARC, CHORD. Lists data for boundary curves A-D.

MONUMENTS SET MONUMENTS FOUND

Taxes paid and entered this 4th day of October, 1968 A.D.

Taxes for the year 1968 A.D. on the lands described within are paid.

We, the members of the Township Board of Supervisors for Rochester Township, Olmsted County, Minnesota, do hereby certify that we have approved this accompanying plat in testimony whereof we have signed our names this 24 day of Sept., 1968 A.D.

Ed J. Kasehd, Chairman; Christy Peters, Supervisor; Philip M. Fortz, Supervisor.

REGISTER OF DEEDS OFFICE, Olmsted County, Minn. I hereby certify that the within instrument was filed in this office for record on OCT 4 - 1968 at 3:34 o'clock P.M. Harry D. Evans, Register of Deeds; Helen Fuchs.